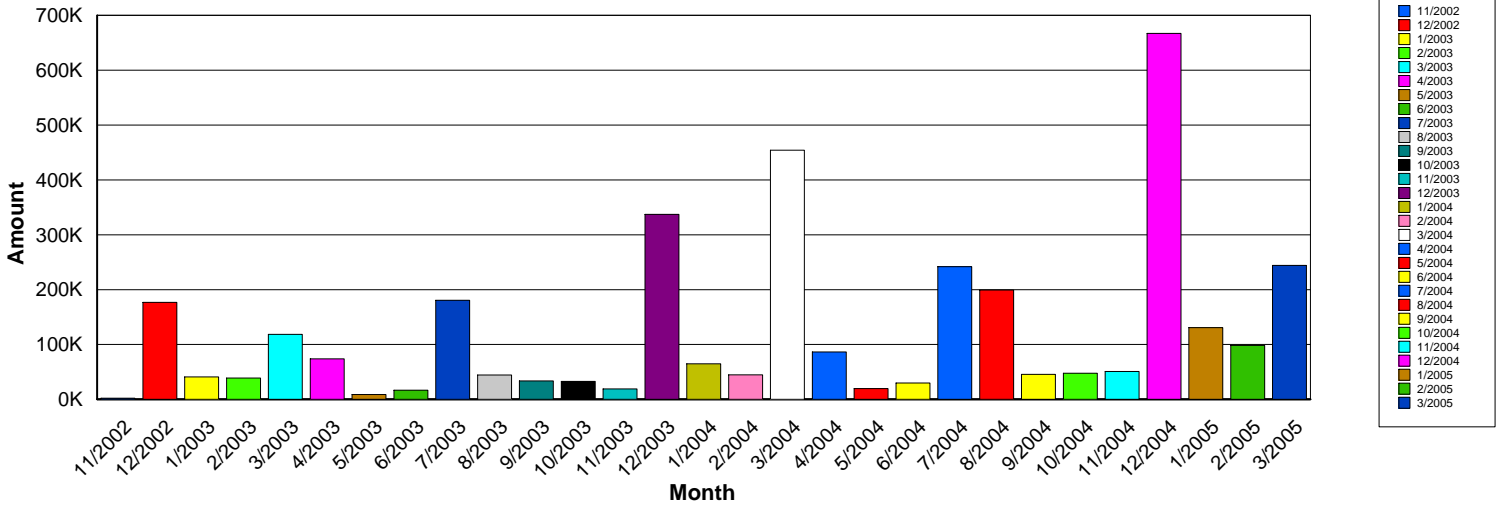


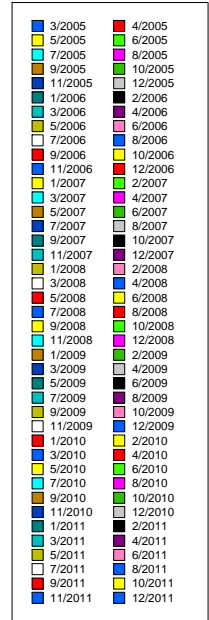
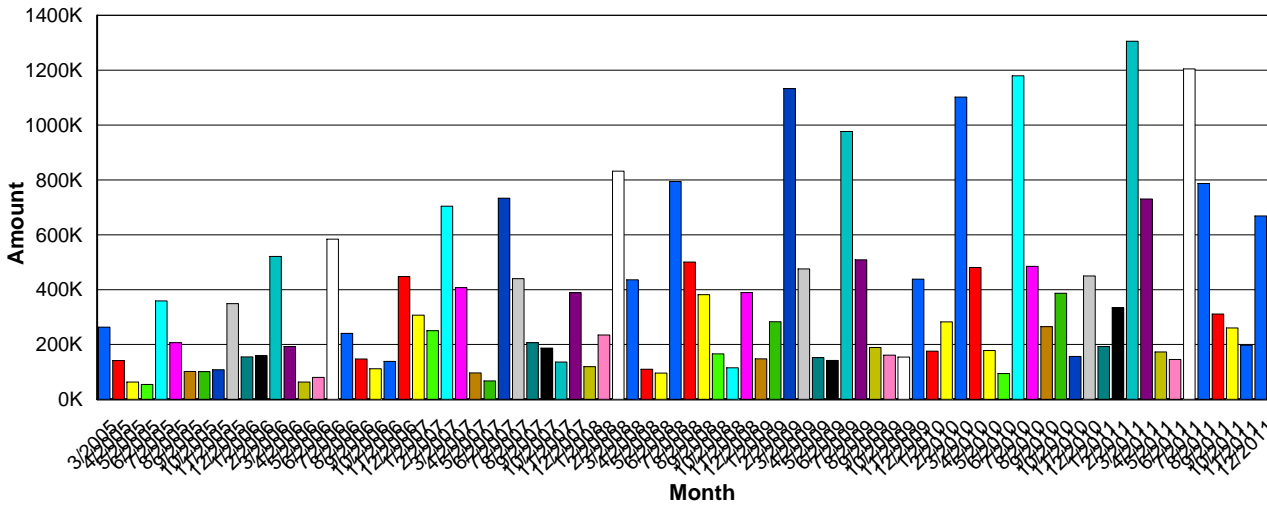
## County Property Tax



<u>Month</u>	<u>Count</u>	<u>Full Amt</u>	<u>E-Fee</u>	<u>Amount</u>
<b>2002</b>	51	180,466.76	1,530.00	178,936.76
<b>2003</b>	382	957,310.79	11,460.00	945,850.79
<b>2004</b>	742	1,974,337.07	22,260.00	1,952,077.07
<b>2005</b>	213	479,807.13	6,390.00	473,417.13
<b>CTO Total</b>	<b>1,388</b>	<b>3,591,921.75</b>	<b>41,640.00</b>	<b>3,550,281.75</b>

\*Epos started in March 2005.

## County Property Tax



<u>Month</u>	<u>Count</u>	<u>Full Amt</u>	<u>E-Fee</u>	<u>Amount</u>
<b>2005</b>	952	1,774,335.28	26,031.69	1,748,303.59
<b>2006</b>	1,604	2,875,723.88	34,530.51	2,841,193.37
<b>2007</b>	2,039	3,969,430.85	43,458.49	3,925,972.36
<b>2008</b>	2,236	4,214,697.72	40,426.36	4,174,271.36
<b>2009</b>	2,416	4,802,574.96	39,854.76	4,762,720.20
<b>2010</b>	2,786	5,279,867.85	43,908.57	5,235,959.28
<b>Jan-11</b>	87	195,026.07	2,137.26	192,888.81
<b>Feb-11</b>	144	337,793.48	3,220.49	334,572.99
<b>Mar-11</b>	742	1,316,564.17	11,506.01	1,305,058.16
<b>Apr-11</b>	421	735,061.18	4,787.06	730,274.12
<b>May-11</b>	91	173,671.10	933.99	172,737.11
<b>Jun-11</b>	93	146,528.21	955.06	145,573.15
<b>Jul-11</b>	756	1,214,701.16	10,288.55	1,204,412.61
<b>Aug-11</b>	399	792,971.02	6,312.73	786,658.29
<b>Sep-11</b>	213	313,491.61	2,544.87	310,946.74
<b>Oct-11</b>	148	261,912.35	1,821.36	260,090.99
<b>Nov-11</b>	69	198,696.58	1,114.80	197,581.78
<b>Dec-11</b>	270	674,572.77	5,978.20	668,594.57
<b>2011</b>	3,433	6,360,989.70	51,600.38	6,309,389.32
<b>CTO Total</b>	15,466	29,277,620.24	279,810.76	28,997,809.48
<b>Total Web Activity</b>	16,854	32,869,541.99	321,450.76	32,548,091.23

\*Epos started in March 2005.