

Vital Statistics 2006 Lancaster County

Bruce D. Dart, PhD
Health Director

Stephen R. Frederick, MA
Health Data & Evaluation Division Manager

Padmanabha Raju V. Kakarlapudi, MCRP
Public Health Epidemiologist

Rama K. Thummalapalli
Epidemiology Intern



Lincoln-Lancaster County Health Department
3140 N Street; Lincoln, Nebraska, 68510

Division of Health Data & Evaluation
402-441-6270; Email: rkakarlapudi@lincoln.ne.us

Table of Contents

Birth Data

Births by Gender, 2006	4
Birth Rates, State of Nebraska and Lancaster County 1980-2006	4
Births by Month, 2006	5
Fertility Rate, 1981-2006	5
Births by Race and Ethnic Origin, 2006	6
Low-Weight Births by Age of Mother, 1987-2006	6
Births by Weight of Child, 2006	7
Low-Weight Births by Marital Status, 2006	7
Low-Weight Births by Age of Mother, 2006	7
Birth Statistics by Race and Ethnic Origin, 2006	8
Care in First Trimester by Age of Mother, 2006	8
Non-Marital Births by Age of Mother, 2006	9
Trimester When Prenatal Care Began, 2006	9
Mean Age of Fathers and Mothers, 1981-2006	10
Percent (%) of Births to Women Age 25 and Older, 1981-2006	10
Non-Marital Birth Rate, 1981-2006	11

Death Data

Deaths by Gender, 2006	13
Death Rates, State of Nebraska and Lancaster County 1984-2006	13
Mean Age of Death by Gender, 1983-2006	14
Leading Causes of Death, 2006.....	14
Infant Mortality Rate, 1984-2006	15
Deaths by Age and Gender, 2006	15
Leading Causes of Death and Crude Death Rate, 2006	16
Cancer Deaths by Type, 2006	17
Five Leading Causes of Death by Gender, 2006	17
Place of Death, 2006	18
Average Age of Death by Gender and Selected Cause, 2006	18
Disposition of Body, 2006.....	19
Leading Causes of Death by Age Group, 2006	19

Birth Data

Births by Gender

Lancaster County, Nebraska, 2006

Gender	2006	
	Frequency (n)	Percent (%)
Male	2095	51.2
Female	2000	48.8
Total	4095	100.00

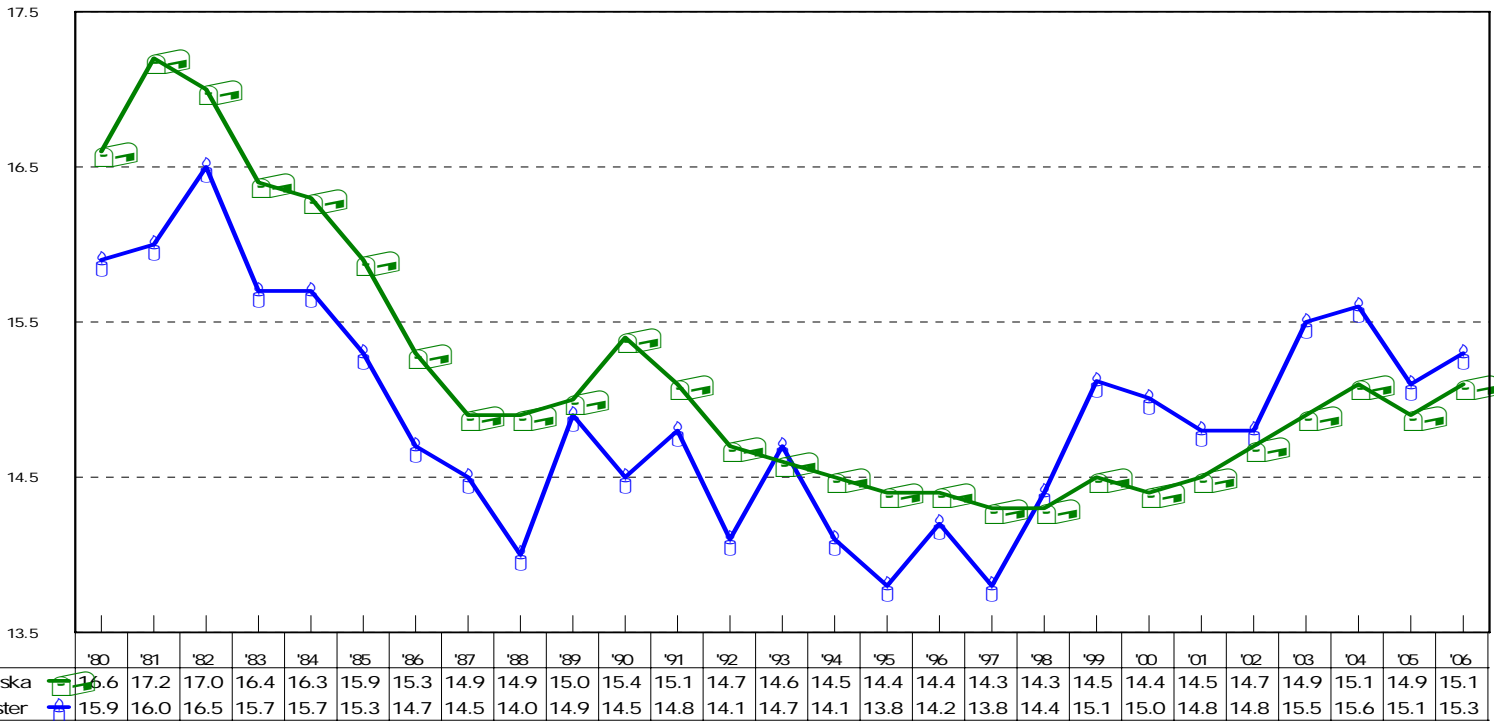
Lincoln-Lancaster County Health Department

Birth Rates

State of Nebraska and Lancaster County

1980 to 2006

Births per 1,000 population



Lincoln-Lancaster County Health Department

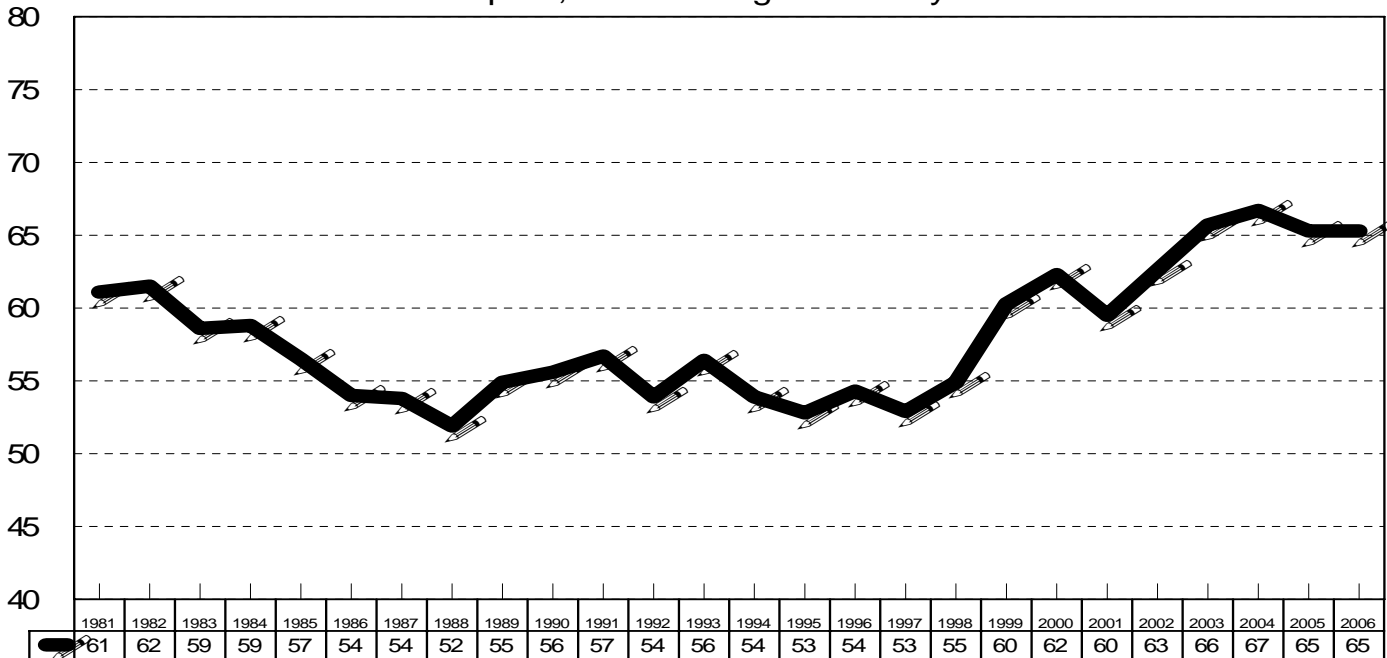
Births by Month Lancaster County, Nebraska, 2006

<i>Month</i>	<i>Frequency</i>	<i>Percent</i>
January	292	7.1
February	328	8
March	372	9.1
April	328	8
May	359	8.8
June	387	9.4
July	314	7.7
August	356	8.7
September	344	8.4
October	340	8.3
November	322	7.9
December	353	8.6
Total	4095	100

Lincoln-Lancaster County Health Department

Fertility Rate Lancaster County, Nebraska 1981-2006

Births per 1,000 women ages 15 to 44 years



Lincoln-Lancaster County Health Department

Births by Race and Ethnic Origin Lancaster County, Nebraska, 2006

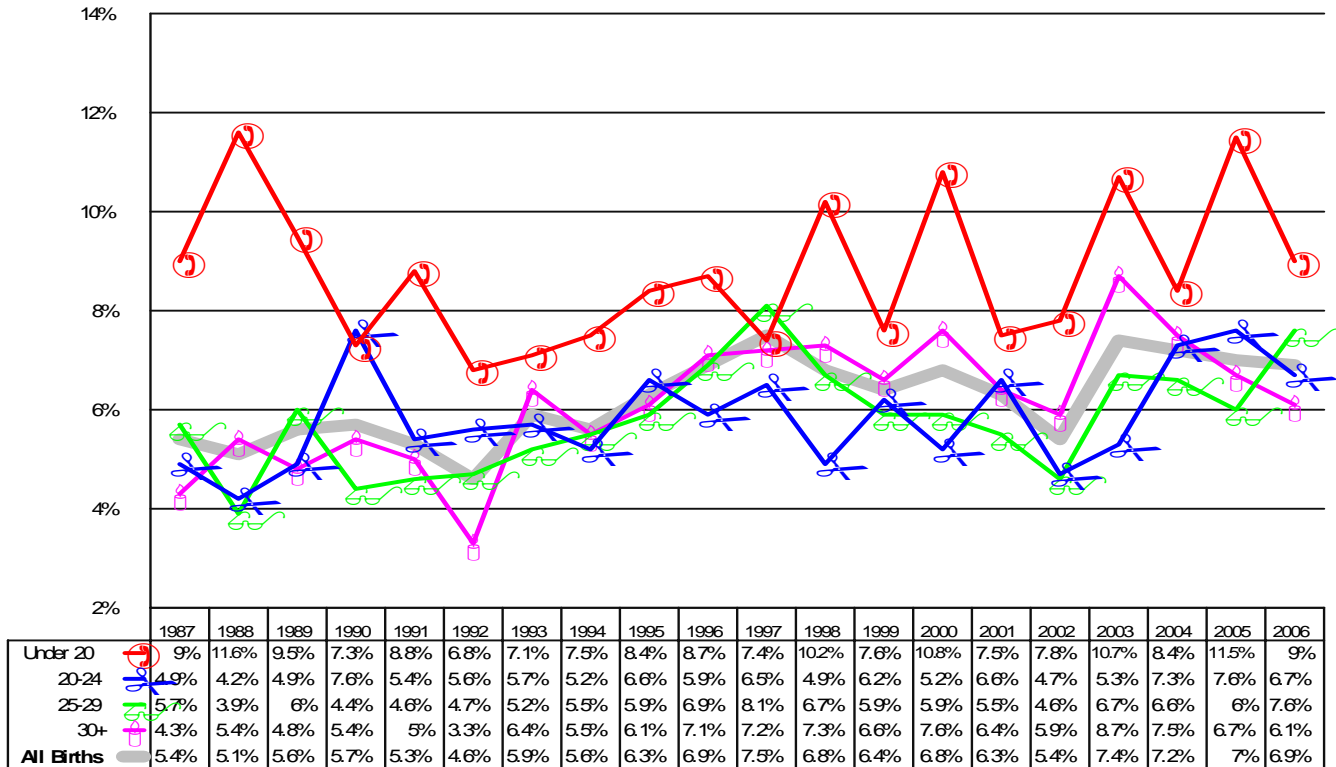
Race*	Frequency	Percent
White	3429	83.7
Black	170	4.1
American Indian	56	1.4
Asian	162	4
Other	246	6
Unknown	32	0.8
Total	4095	100
Latino**	340	8.3

*Race of the child is determined by the race of the mother

**Latinos may be of any group

Lincoln-Lancaster County Health Department

Low-Weight Births by Age of Mother Lancaster County, Nebraska 1987-2006



Lincoln-Lancaster County Health Department

Births by Weight of Child Lancaster County, Nebraska, 2006

Weight of Child	Frequency	Percent (%)
1lb & under	3	0.1
1lb. 1oz-2lb	19	0.5
2lb. 1oz-3lb. 8oz	54	1.3
3lb. 9oz- 4lb. 8oz	55	1.3
4lb. 9oz- 5lb. 8oz	153	3.7
5lb. 9oz-5lb. 15oz	153	3.7
6lb- 6lb. 15oz	882	21.5
7lb-7lb. 15oz	1499	36.6
8lb-8lb. 15oz	959	23.4
9lb-9lb. 15oz	263	6.4
10lb-10lb-15oz	50	1.2
11lbs & over	5	0.1
Total Births	4095	100

Lincoln-Lancaster County Health Department

Low-Weight Births by Marital Status* Lancaster County, Nebraska, 2006

Weight of the Child	<i>Married</i>		<i>Unmarried</i>	
	Frequency	Percent (%)	Frequency	Percent (%)
Low Birth Weight (5 lbs 8 oz and under)	185	6.4	99	8.2
Normal Birth Weight (Over 5 lb 8 oz)	2706	93.6	1105	91.8
Total	2891	100	1204	100

*Marital Status not specified for the two individuals not included

Lincoln-Lancaster County Health Department

Low-Weight Births by Age of Mother Lancaster County, 2006

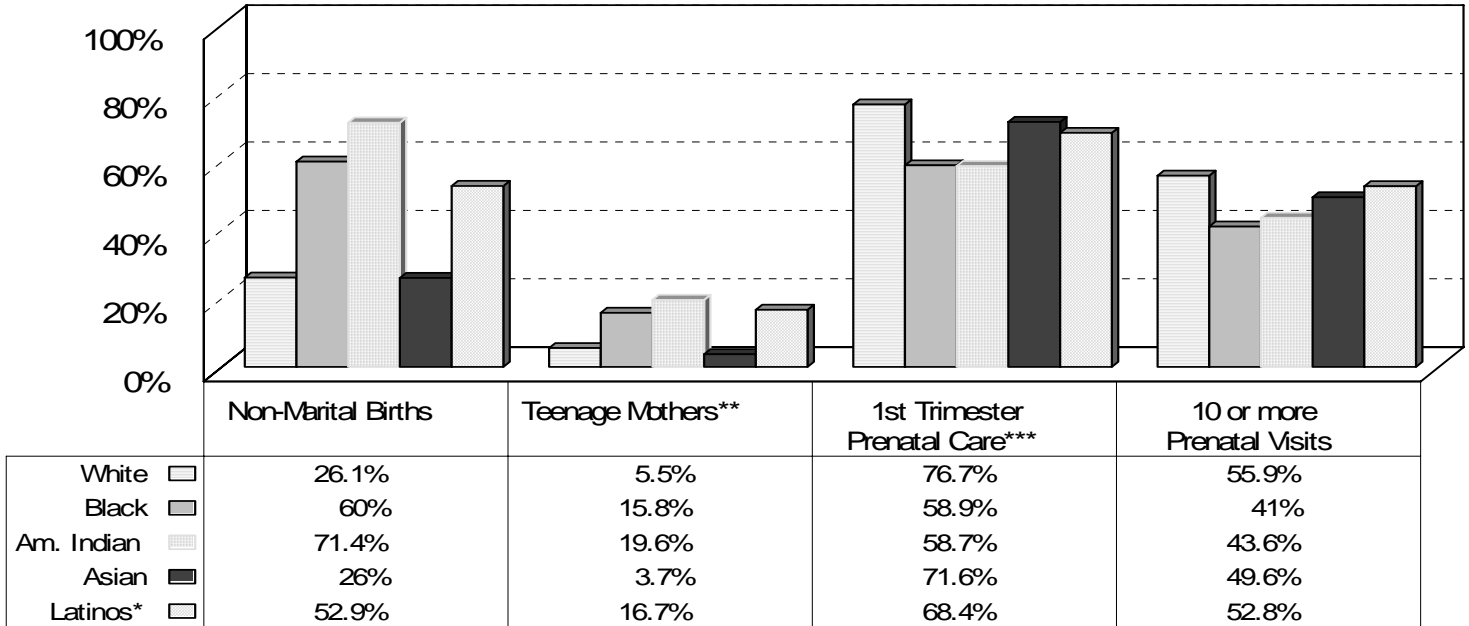
Age of Mother	Total Live Births	LowWeight Births	% of LowWeight by Age Groups**	% of Age Group Lowweight***
Under 20	277	25	8.8	9
20-24	1004	67	23.5	6.6
25-29	1386	105	36.9	7.5
30 & Over	1428	87	30.6	6
Total	4095	284	100	6.9

Lincoln-Lancaster County Health Department

**Percentages in this column reflect low-weight births by age-group

*** Percentages in this column reflect the births within the age group that were low-weight.

Birth Statistics by Race and Ethnic Origin Lancaster County, Nebraska, 2006



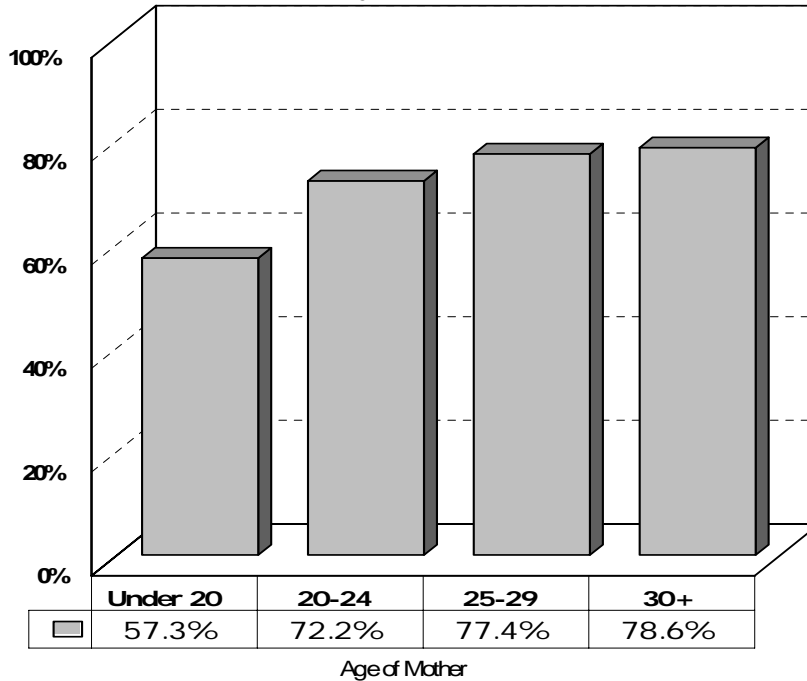
*Latinos may be of any race

**Less than 20 years of age

***PLEASE NOTE: As of 2005, the variable, 1st Trimester Prenatal Care is not directly comparable to data using the same label reported through 2004. From 2005 onward, the data are from a health record rather than from self-report.

Lincoln-Lancaster County Health Department

Care in First Trimester by Age of Mother Lancaster County, Nebraska, 2006*



*As of 2005, the variable, "1st Trimester Prenatal Care," is not directly comparable to data using the same label reported through 2004. From 2005 and onward, the data are from the health record rather than from self-report.

Lincoln-Lancaster County Health Department

Non-Marital Births by Age of Mother Lancaster County, Nebraska, 2006

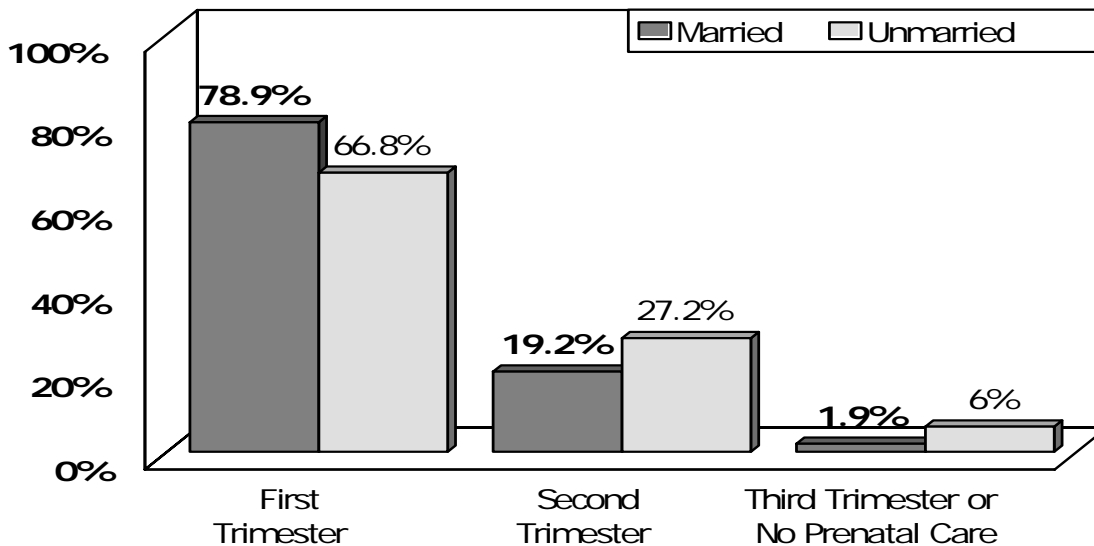
Age Group	Freq. Total Live Births	Freq. Non Marital Births	% of Non-Marital Age Group**	% of Age group Not Married***
Under 20	277	236	19.6%	85.2
20 to 24	1004	548	45.5%	54.6
25 to 29	1386	264	21.9%	19
30 and Above	1428	156	13.0%	10.9
TOTAL	4095	1204	100.0%	29.4

Lincoln- Lancaster County Health Department

**Percentages in this column reflect non- marital births by age group.

***Percentages in this column reflect non- marital births within the respective age groups.

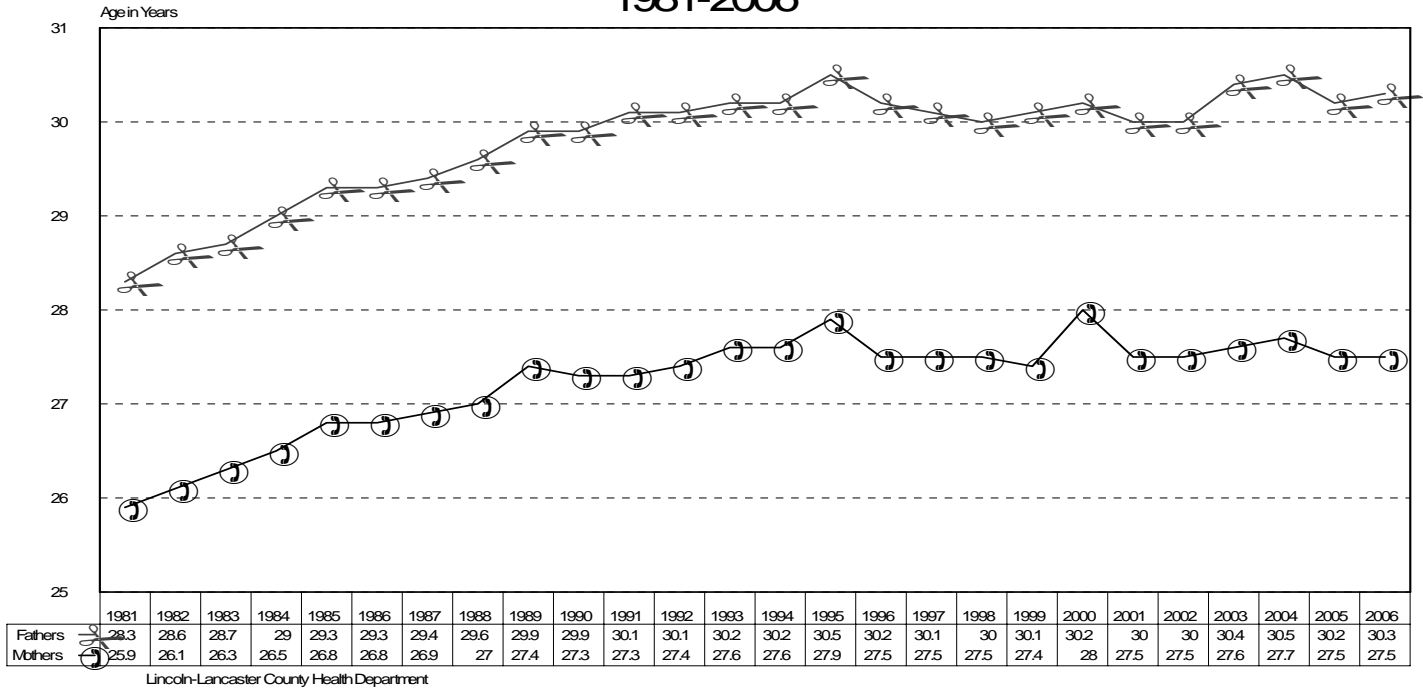
Trimester When Prenatal Care Began Lancaster County, Nebraska, 2006*



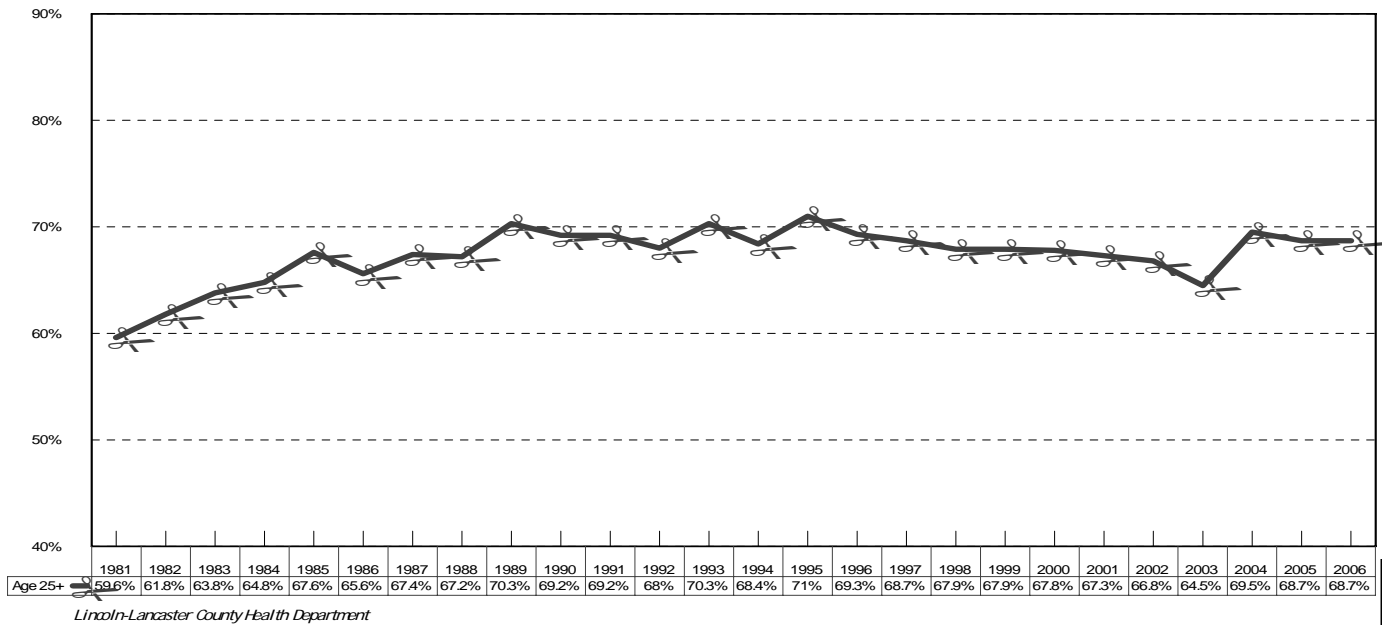
*As of 2005, the variables related to when Prenatal Care Began are not directly comparable to data using the same or similar labels reported through 2004. From 2005 and onward, the data are from the health record rather than from self-report.

Lincoln-Lancaster County Health Department

Mean Age of Fathers and Mothers Lancaster County, Nebraska 1981-2006

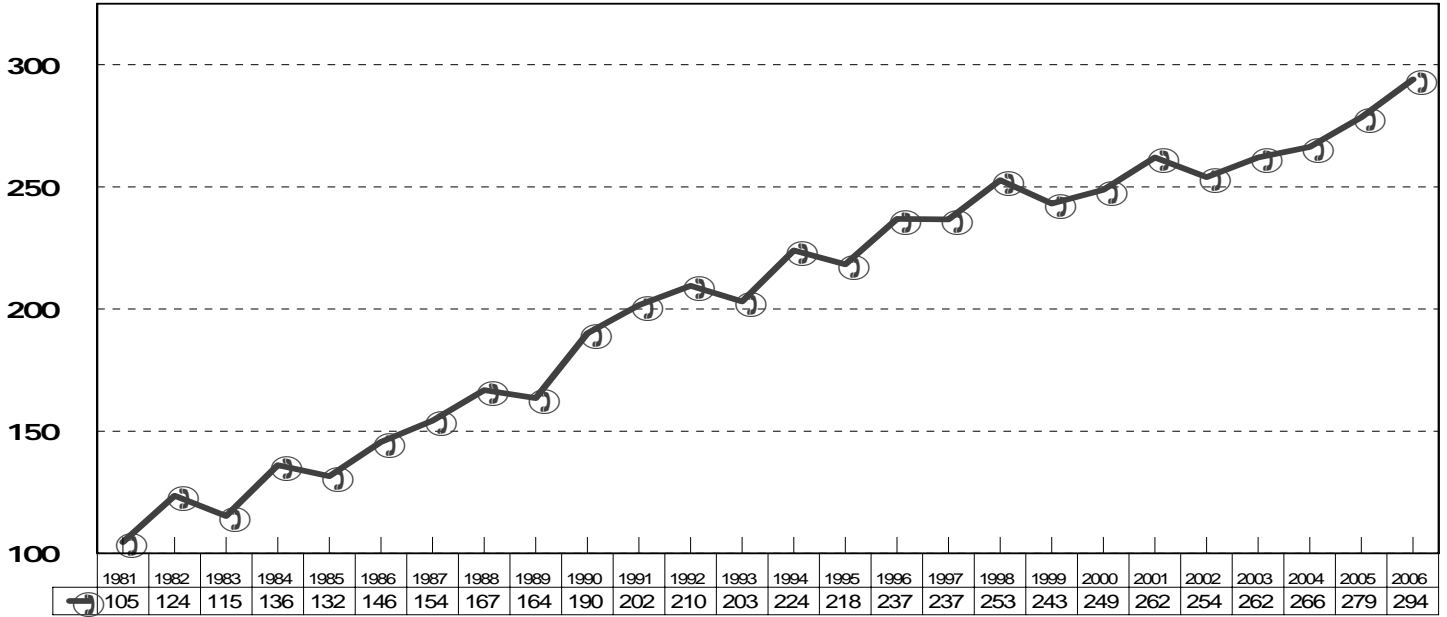


Percent (%) of Births to Women Age 25 and Older Lancaster County, Nebraska 1981 to 2006



Non-Marital Birth Rate Lancaster County, Nebraska 1981 to 2006

Non-Marital Births per 1000 Live Births



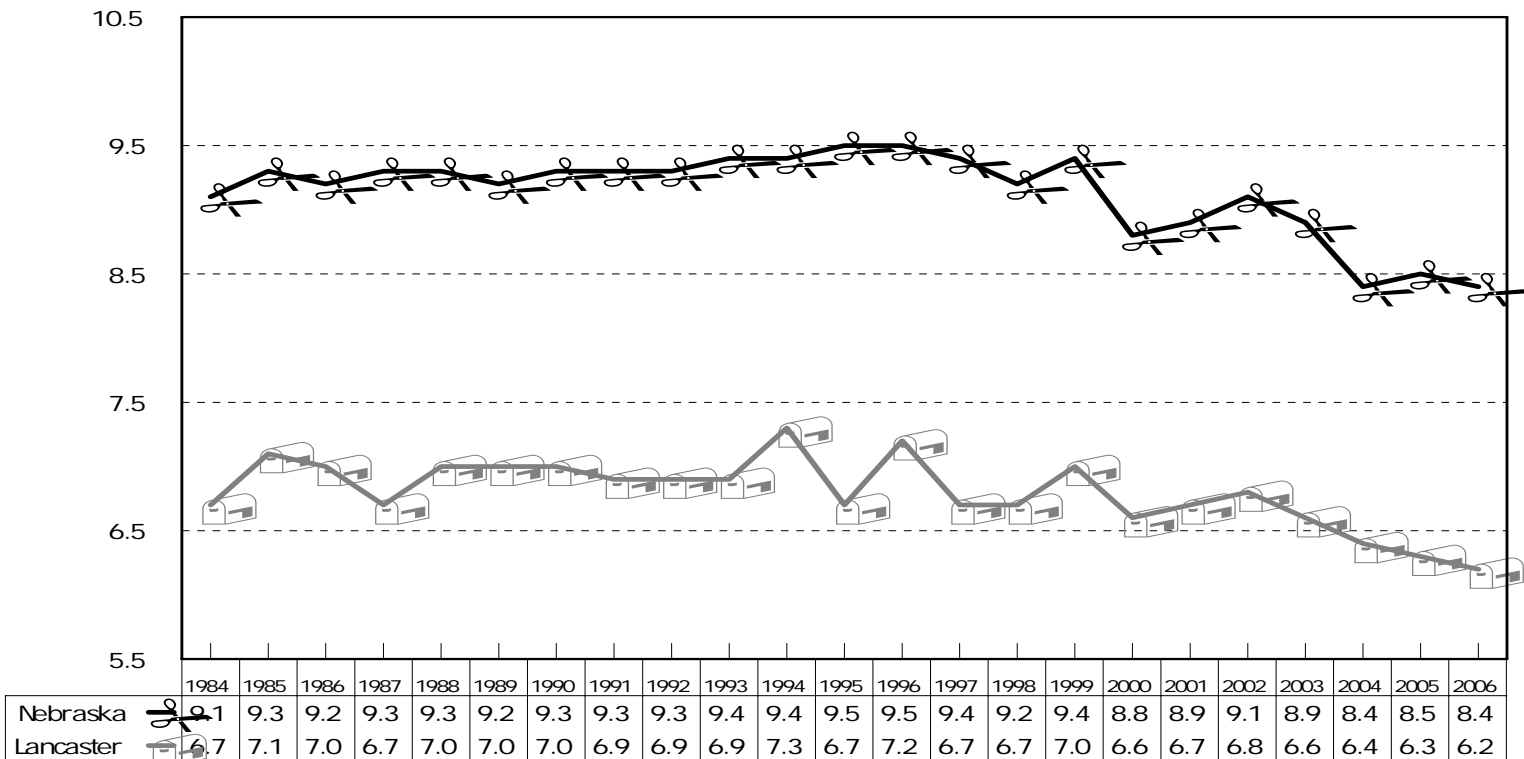
Lincoln-Lancaster County Health Department

Death Data

Deaths by Gender		
Lancaster County, Nebraska, 2006		
Gender	Frequency (n)	Percent (%)
Male	793	46.9
Female	897	53.1
Total	1690	100%

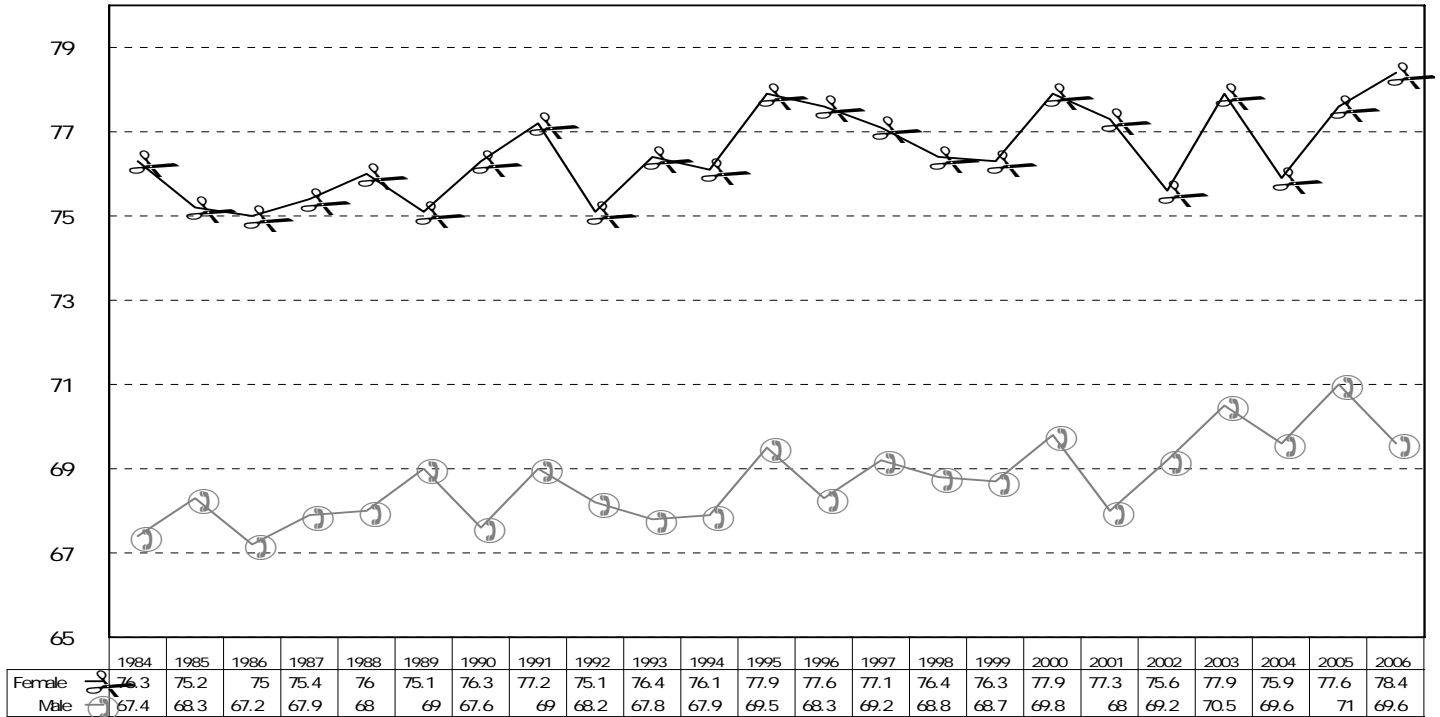
Lincoln-Lancaster County Health Department

Crude Death Rates State of Nebraska and Lancaster County 1984 to 2006 Deaths per 1000 population



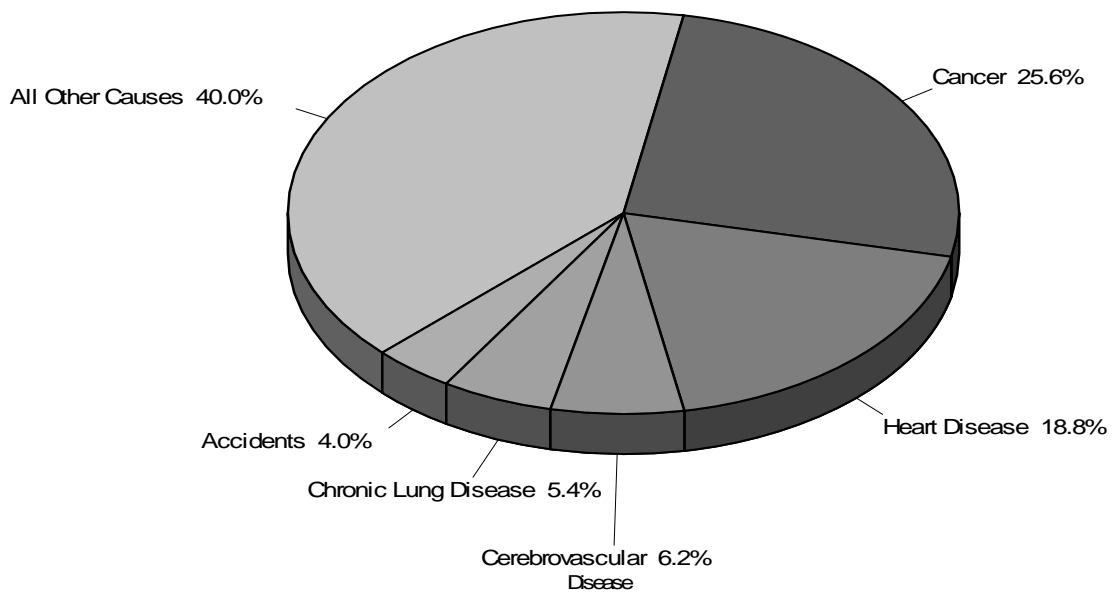
Lincoln-Lancaster County Health Department

Mean Age of Death by Gender Lancaster County, Nebraska 1983-2006



Lincoln-Lancaster County Health Department

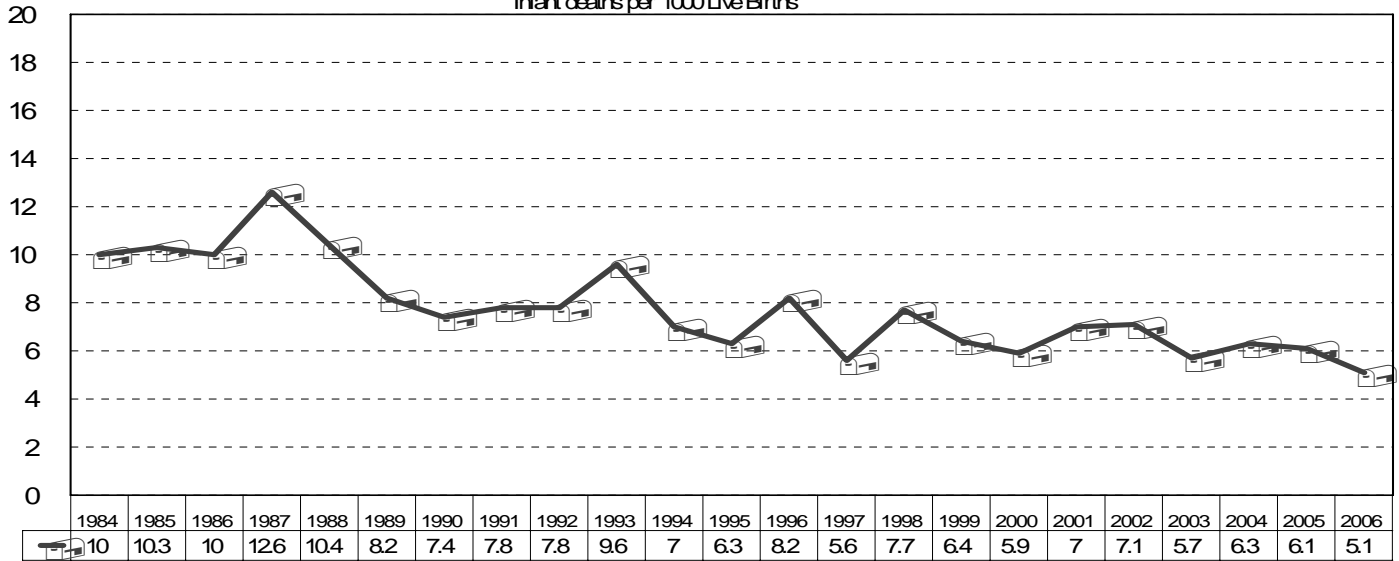
Leading Causes of Death Lancaster County, Nebraska 2006



Lincoln-Lancaster Health Department

Infant Mortality Rate Lancaster County, Nebraska 1984-2006

Infant deaths per 1000 Live Births



Lincoln-Lancaster County Health Department

Deaths by Age and Gender Lancaster County, Nebraska, 2006

Age	Total Deaths	Percent (%) Total	Female	Percent of All Female Deaths	Male	Percent of All Male Deaths
<1	21	1.3%	8	0.9%	13	1.6%
1-4	2	0.1%	0	0.0%	2	0.3%
5-9	2	0.1%	1	0.1%	1	0.1%
10-14	2	0.1%	0	0.0%	2	0.3%
15-19	14	0.9%	2	0.2%	12	1.5%
20-24	7	0.4%	3	0.4%	4	0.5%
25-29	10	0.6%	1	0.1%	9	1.1%
30-39	21	1.3%	9	1.1%	12	1.5%
40-49	88	5.3%	35	4.1%	53	6.6%
50-59	165	10.0%	58	6.9%	107	13.4%
60-69	170	10.3%	69	8.2%	101	12.6%
70-79	306	18.6%	138	16.3%	168	21.0%
80-89	540	32.8%	302	35.7%	238	29.8%
90-99	277	16.8%	202	23.9%	75	9.4%
>100	20	1.2%	17	2.0%	3	0.4%
Total	1645	100.0%	845	100.0%	800	100.0%

Lincoln-Lancaster County Health Department

**Leading Causes of Death and Crude Rate
per 100,000 Population
Lancaster County, Nebraska, 2006**

<i>Cause of Death</i>	<i>Number of Total Deaths</i>	<i>Percent of Total Deaths</i>	<i>Crude Death Rate*</i>
<i>Cancer</i>	421	25.6	157.6
<i>Heart Disease</i>	310	18.8	116
<i>Cerebrovascular Disease</i>	102	6.2	38.2
<i>Chronic Lung Disease</i>	89	5.4	33.3
<i>Accidents</i>	65	4	24.3
<i>Alzheimer's Disease</i>	50	3	18.7
<i>Diabetes Mellitus</i>	45	2.7	16.8
<i>Suicide</i>	37	2.3	13.9
<i>Parkinsons</i>	29	1.8	10.9
<i>Essential Hypertension</i>	27	1.6	10.1
<i>Nephritis</i>	25	1.5	9.4
<i>Pneumonia</i>	21	1.3	7.9
<i>Chronic Liver Disease</i>	17	1	6.4
<i>Pneumonitis due to solids and liquids</i>	15	0.9	5.6
<i>Birth defect</i>	11	0.7	4.1
<i>Emphysema</i>	11	0.7	4.1
<i>HIV</i>	7	0.4	2.6
<i>Septicemia</i>	7	0.4	2.6
<i>Atherosclerosis</i>	5	0.3	1.9
<i>Aortic Aneurism</i>	4	0.2	1.5
<i>Cholelithiasis</i>	4	0.2	1.5
<i>Anemia</i>	3	0.2	1.1
<i>Asthma</i>	3	0.2	1.1
<i>Assault</i>	3	0.2	1.1
<i>Hernia</i>	2	0.1	0.7
<i>Peptic Ulcer</i>	2	0.1	0.7
<i>Influenza</i>	1	0.1	0.4
<i>Nutritional deficiency</i>	1	0.1	0.4
<i>TB</i>	1	0.1	0.4
<i>All other causes</i>	327	19.9	122.4
<i>Total</i>	1645	100	615.8

*Rate Per 100,000 population

Lincoln-Lancaster County Health Department

Cancer Deaths by Type Lancaster County, Nebraska 2006

Type of Cancer	ICD 10	Female	Male	Total	Percentage
Lung, Trachea, Bronchus	C33-C34	37	68	105	24.9%
Color/ Rectum	C18-C21	17	25	42	10.0%
Non-Hbdgkin's Lymphoma	C82-C85	10	10	20	4.8%
Leukemia	C90.1, C91-C95	8	15	23	5.5%
Other Lymphatic & Hematopoietic Tissues	C81, C88, C90.0, C90.2, C96	4	8	12	2.9%
Breast	C50	23	0	23	5.5%
Prostate	C61	0	22	22	5.2%
Pancreas	C25	16	17	33	7.8%
Ovary/other Uterine Adnexa	C56-C57	11	0	11	2.6%
Esophagus	C15	5	7	12	2.9%
Stomach	C16	1	3	4	1.0%
Liver	C22	5	3	8	1.9%
Cervix Uteri	C53	3	0	3	0.7%
Skin	C43-C44	4	7	11	2.6%
Other Cancer	...	43	49	92	21.9%
Total	...	187	234	421	100.0%

Lincoln-Lancaster County Health Department

Five Leading Causes of Death by Gender Lancaster County, Nebraska, 2006

Rank	Gender	
	Male	Female
1	Cancer(234,174.7)	Cancer(187,140.3)
2	Heart Disease(144,107.5)	Heart Disease(166,124.6)
3	Chronic Lung Disease(41,30.6)	Cerebrovascular Disease(71,53.3)
4	Accidents(35,26.1)	Chronic Lung Disease(48,36)
5	Cerebrovascular Disease(31,23.1)	Alzheimer's Disease (35,26.2)

Expression: Cause (Frequency; Rate**)

Note:** Sex Specific Rate per 100,000 Population

Lincoln-Lancaster County Health Department

Place of Death

Lancaster County, Nebraska, 2006.

Place of Death	Frequency	Percent
Inpatient	384	23.3
Emergency Room/Outpatient	97	5.9
Decedent's Home	407	24.7
Hospice Facility	72	4.4
Nursing Home/Long Term Care Facility	602	36.6
Other	83	5.1
Total	1645	100

Lincoln-Lancaster County Health Department

Average Age of Death by Gender by Selected Cause

Lancaster County, Nebraska, 2006.

Cause of Deaths	Male	Female
Heart Disease	75.2	85.3
Cancer	69.3	72
Cerebrovascular Disease	70.3	83.5
Accidental Deaths	61.6	66.3
Chronic Lung Disease	64.7	71.7
Diabetes Mellitus	71.7	76.3
Suicide	42.4	42.1

Lincoln-Lancaster County Health Department

Disposition of Body

Lancaster County, Nebraska, 2006

Disposition	Frequency	Percent
Burial	967	58.8
Cremation	635	38.6
Donation	11	0.67
Entombment	13	0.79
Removal from state	16	0.97
Other	1	0.06
Unknown	2	0.12
Total	1645	100

Lincoln-Lancaster County Health Department

Leading Causes of Death By Age

Lancaster County, Nebraska, 2006

Rank	Age Category										
	Under 1	1-4	5-14	15-24	25-34	35-44	45-54	55-64	65-74	75-84	85+
1	Birth Defect	Birth Defect	Accidents	Accidents	Accidents	Cancer 12* (33.1)**	Cancer 40* (110.2)**	Cancer 81* (322)**	Cancer 81* (585.2)**	Cancer 128* (1288.2)**	Heart Disease 145* (3630)**
2	Cancer	Cerebrovascular Disease		Cancer	Cancer	Heart Disease 10* (27.6)**	Heart Disease 17* (46.8)**	Heart Disease 18* (71.5)**	Heart Disease 24* (173.3)**	Heart Disease 91* (925.9)**	Cancer 72* (1802.7)**
3	Intentional Self Harm			Cerebrovascular Disease	Heart Disease	HIV	Accidents 10* (27.5)**	Cerebrovascular Disease	Chronic Lung Disease 13* (93.2)**	Chronic Lung Disease 35* (352.2)**	Cerebrovascular Disease 44* (1101.6)**
4	Assault			Nephritis	Chronic Liver Disease	Accidents	Diabetes	Chronic Lung Disease	Cerebrovascular Disease 12* (86.9)**	Cerebrovascular Disease 33* (332.1)**	Chronic Lung Disease 31* (776.1)**
5				Assault			Chronic Lung Disease	Accident	Chronic Liver Disease	Alzheimers Disease 17* (171)**	Alzheimer's Disease 27* (676)**
6									Diabetes	Diabetes 16* (161)**	Renal Disease 22* (550.8)**

* Number of Deaths ** Age Specific Rate per 100,000 Population
Lincoln-Lancaster County Health Department