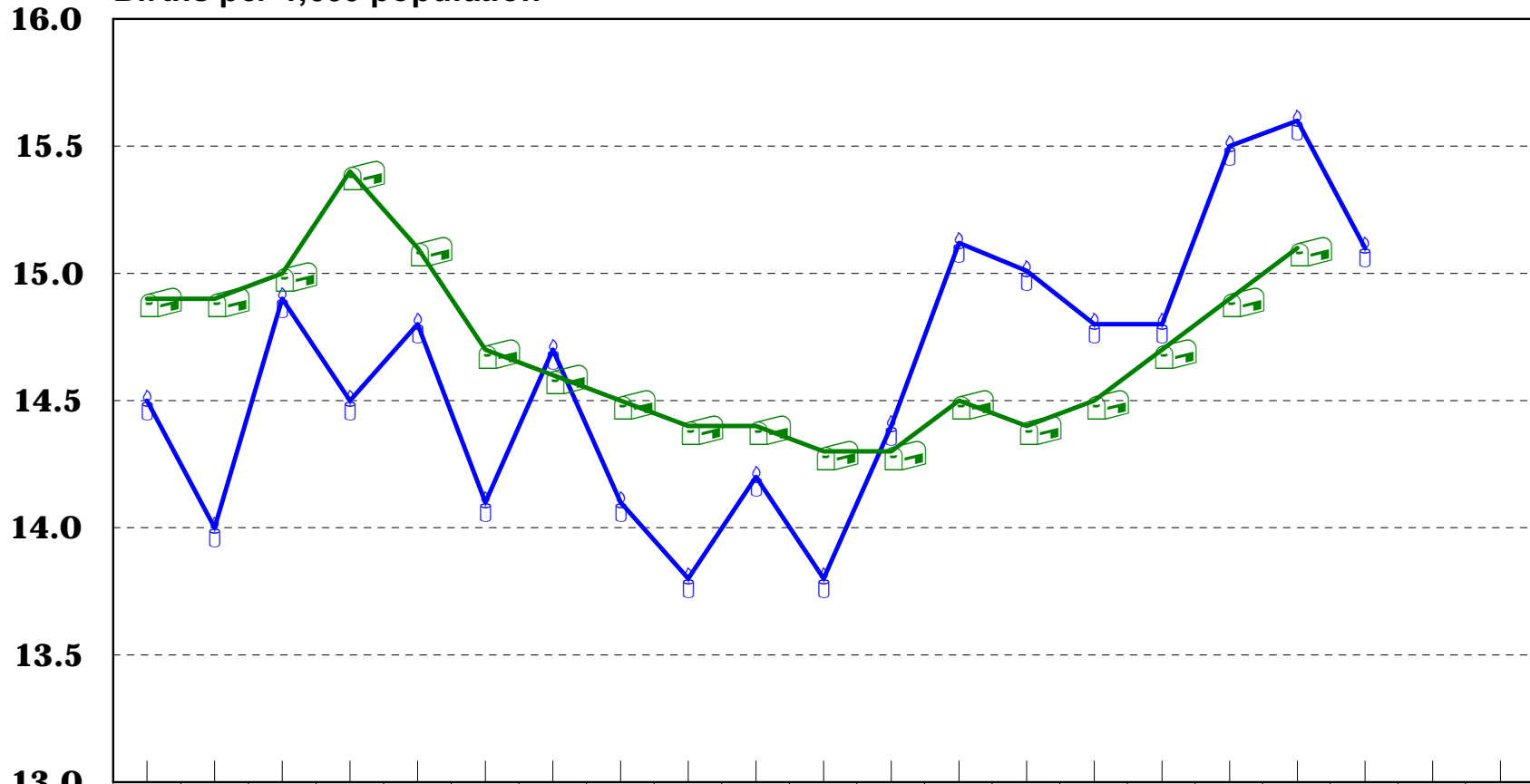


Birth Rates

State of **Nebraska** and **Lancaster County**
1987 to 2007

Births per 1,000 population



	1987	1988	1989	1990	1991	1992	1993	1994	1995	1996	1997	1998	1999	2000	2001	2002	2003	2004	2005	2006	2007
Nebraska	14.9	14.9	15.0	15.4	15.1	14.7	14.6	14.5	14.4	14.4	14.3	14.3	14.5	14.4	14.5	14.7	14.9	15.1	NA*	NA*	NA*
Lancaster	14.5	14.0	14.9	14.5	14.8	14.1	14.7	14.1	13.8	14.2	13.8	14.4	15.1	15.0	14.8	14.8	15.5	15.6	15.1	NA*	NA*

Lincoln-Lancaster County Health Department

*NA=Data **N**ot **A**vailable