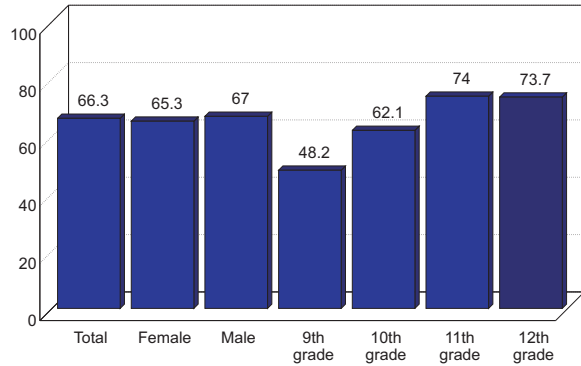
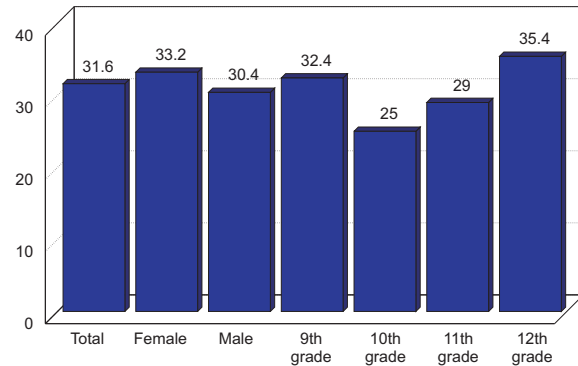


Alcohol

Percentage who ever had at least one drink of alcohol in their lifetime.

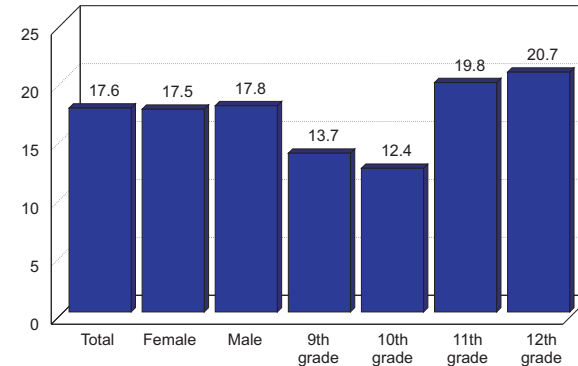


Percentage who rode in a vehicle in the past 30 days driven by someone who had been drinking



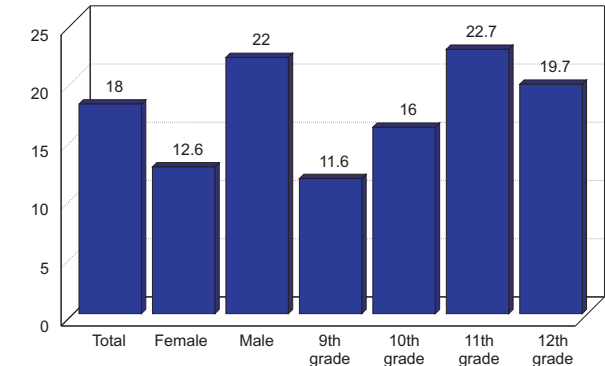
Tobacco

Percentage who smoked cigarettes in the past 30 days

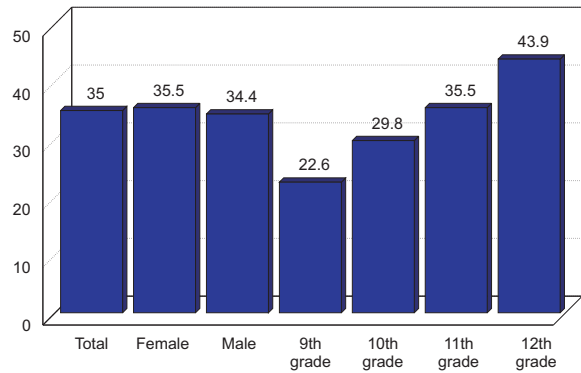


Other Drugs

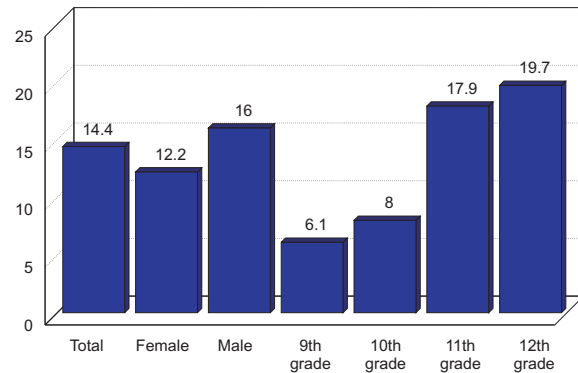
Percentage who used marijuana in the past 30 days



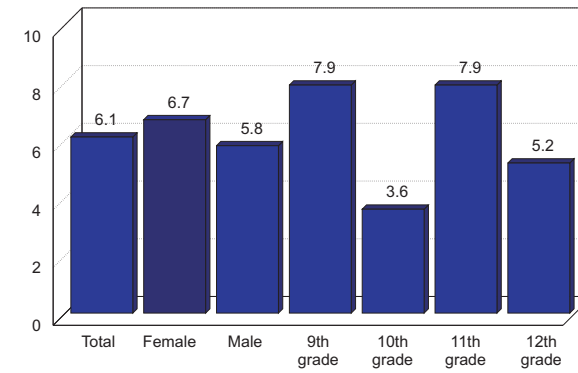
Percentage who had at least one drink of alcohol in past 30 days



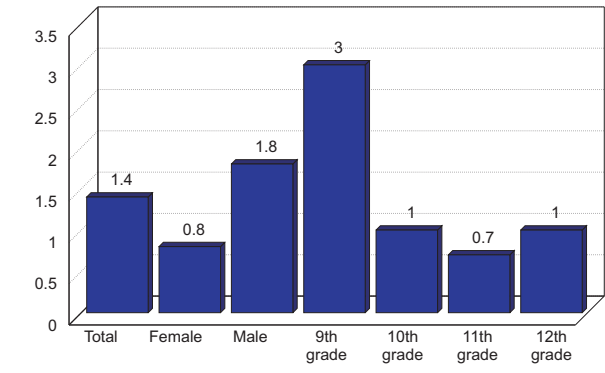
Percentage who drove a car or other vehicle in the past 30 days when they had been drinking



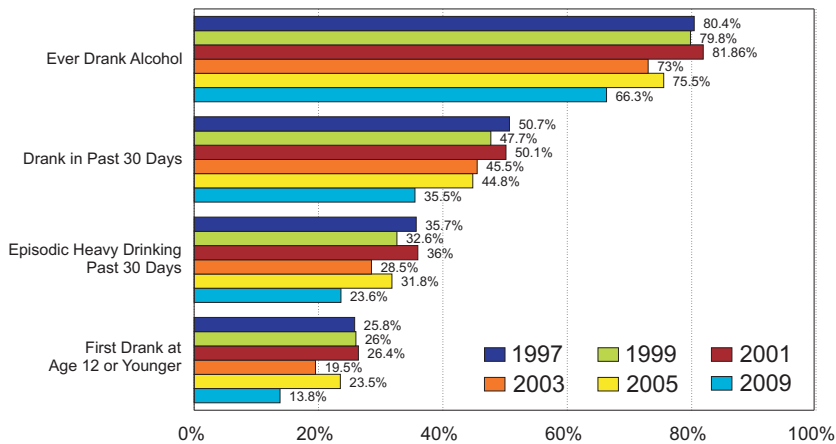
Percentage who smoked on school property in the past 30 days



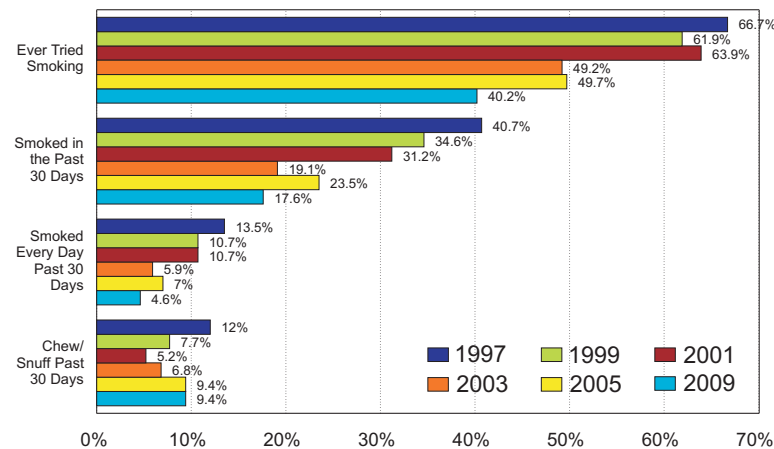
Percentage who used cocaine in the past 30 days



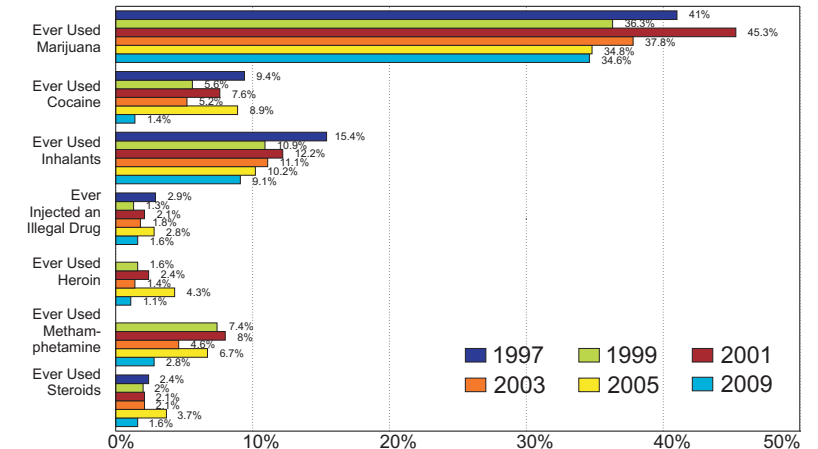
Alcohol Trends...



Tobacco Trends...

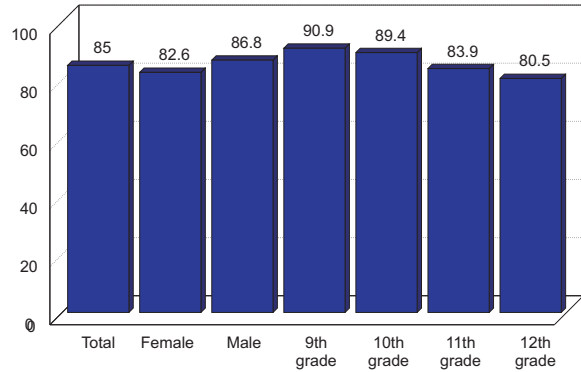


Other Drugs Trends...



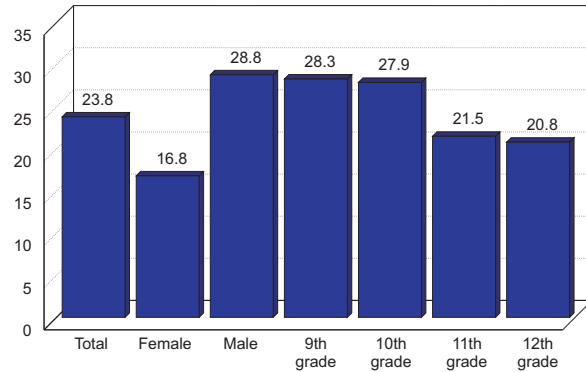
Physical Activity

Percentage who engaged in vigorous physical activity in the past 7 days



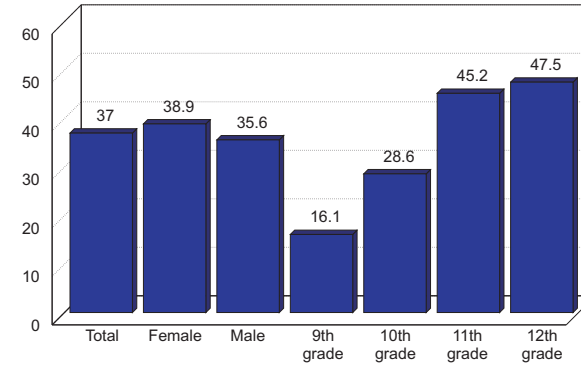
Violence

Percentage who were involved in a physical fight in past 12 months



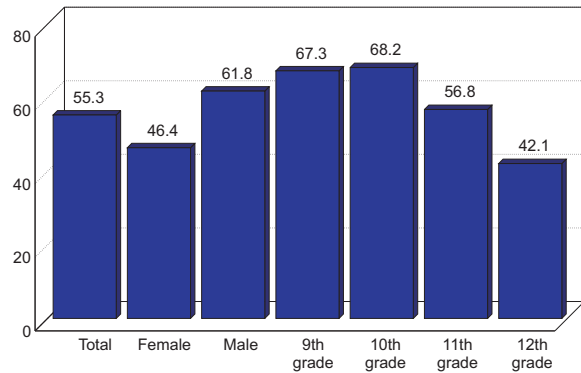
Sexual Activity

Percentage of students who ever had sexual intercourse



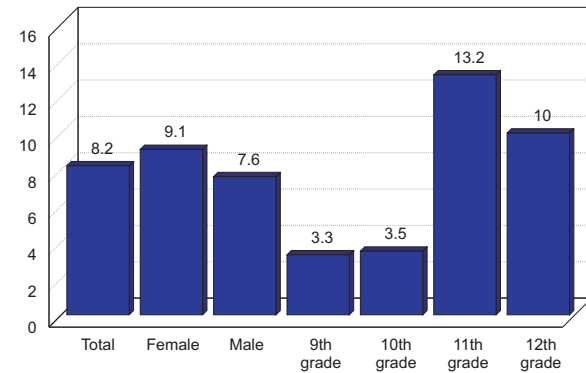
Sports Participation

Percentage who played on sports teams in past 12 months

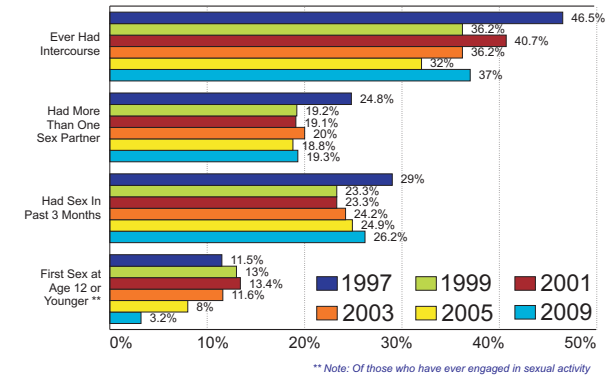


Seat Belt Use

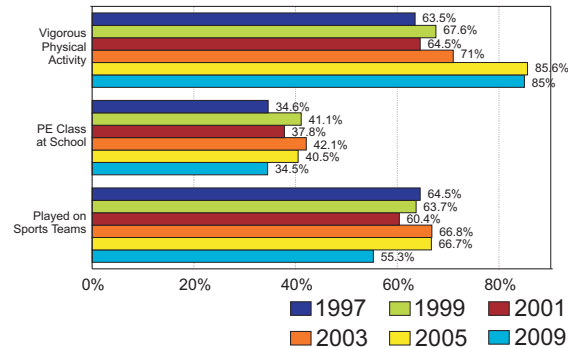
Percentage who never/rarely wear a seat belt when riding in a car



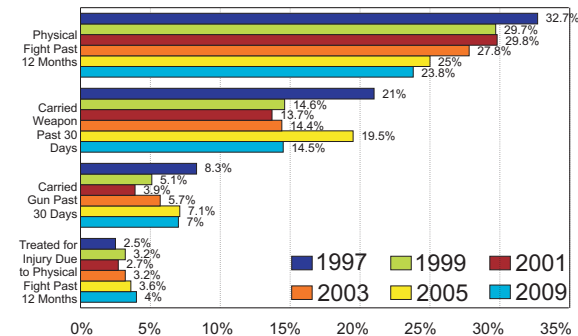
Sexual Activity Trends...



Physical Activity Trends...

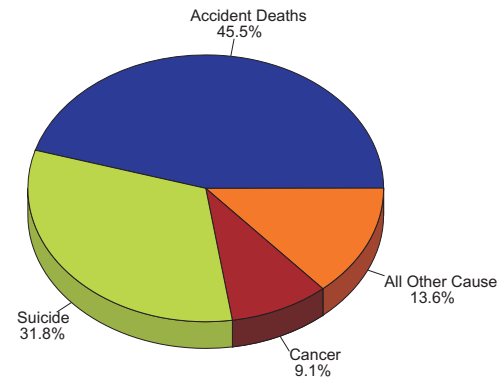


Violence Trends...



Leading Causes of Death

14-24 Age Group, Lancaster County 2007 (N=22)



Lancaster County Adolescents Behaviors and Trends

YRBS 2009



In spring 2009, the Youth Risk Behavior Survey was completed by 840 students in all public high schools in Lancaster County. The results in the 'Total' column are grade adjusted and are representative of all Lancaster county students in grades 9-12.

We are unable to publish the 2007 data in this report due to low participation resulting in small sample size. Students completed a 97 item questionnaire. The survey was administered to protect the privacy of the students by allowing for anonymous and voluntary participation. Parental permission was required before survey administration.

For a complete report on the survey, please visit www.lincoln.ne.gov and enter "health data" in key word, call 402-441-6270, or email: epi@lincoln.ne.gov.