

SECTION 6
FUTURE PUBLIC FACILITIES &
TRANSPORTATION PLAN

SECTION 6

FUTURE PUBLIC FACILITIES & TRANSPORTATION PLAN

INTRODUCTION

Section 6 of the Bennet Comprehensive Plan discusses the existing conditions and planned improvements to the public facility and transportation systems in the Community. **Public Facilities** provide citizens with social, cultural, educational, health care, law enforcement, fire protection and recreational facilities. **Transportation** systems provide for safe travel of pedestrians and automobiles. Quality public facilities, utilities and transportation systems are provided to ensure a quality of life for all residents of Bennet.

PUBLIC FACILITIES

The Public Facilities component of this Comprehensive Plan serves to identify existing public facilities in Bennet and determine future needs and desires of pertinent public facilities during the planning period (2006 - 2026). The location of pertinent public facilities in Bennet is identified in **Illustration 6.1**.

PARKS AND RECREATION

An integral part of the quality of life in a Village is the park system and recreation opportunities provided to its residents and visitors. Recreational opportunities and the availability of open space plays an important role in enhancing the quality of life in Bennet. The role of the Community in adequately planning for open space and providing a full range of recreational opportunities directly impacts community and economic development activities.

VILLAGE OF BENNET PARKS

- ◆ **The Bennet Village Park**, occupies a 1.6 acre block bounded by Elm and Fir Streets on the north and south, and Van Buren and Harrison Streets on the east and west. Amenities available at the Village Park include newly built playground equipment, restrooms, and a picnic shelter, a sand volleyball court, and small band shell. The new picnic shelter and restroom facilities are handicapped accessible, and were built by the Bennet Builders organization. The new construction at the Park was funded partly by a \$5,000 matching grant, which also helped to improve the parking lot. The Village anticipates spending an additional \$36,000 in new equipment and park improvements over the planning period.

Other park facilities in Bennet include a public **T-ball diamond**, located a half-block west of the Village Park, the undeveloped ***Whispering Pines Park*** on the east edge of the Bush Pines Subdivision, and outdoor basketball/tennis courts and playground equipment at the Elementary School.

VILLAGE BALLFIELD

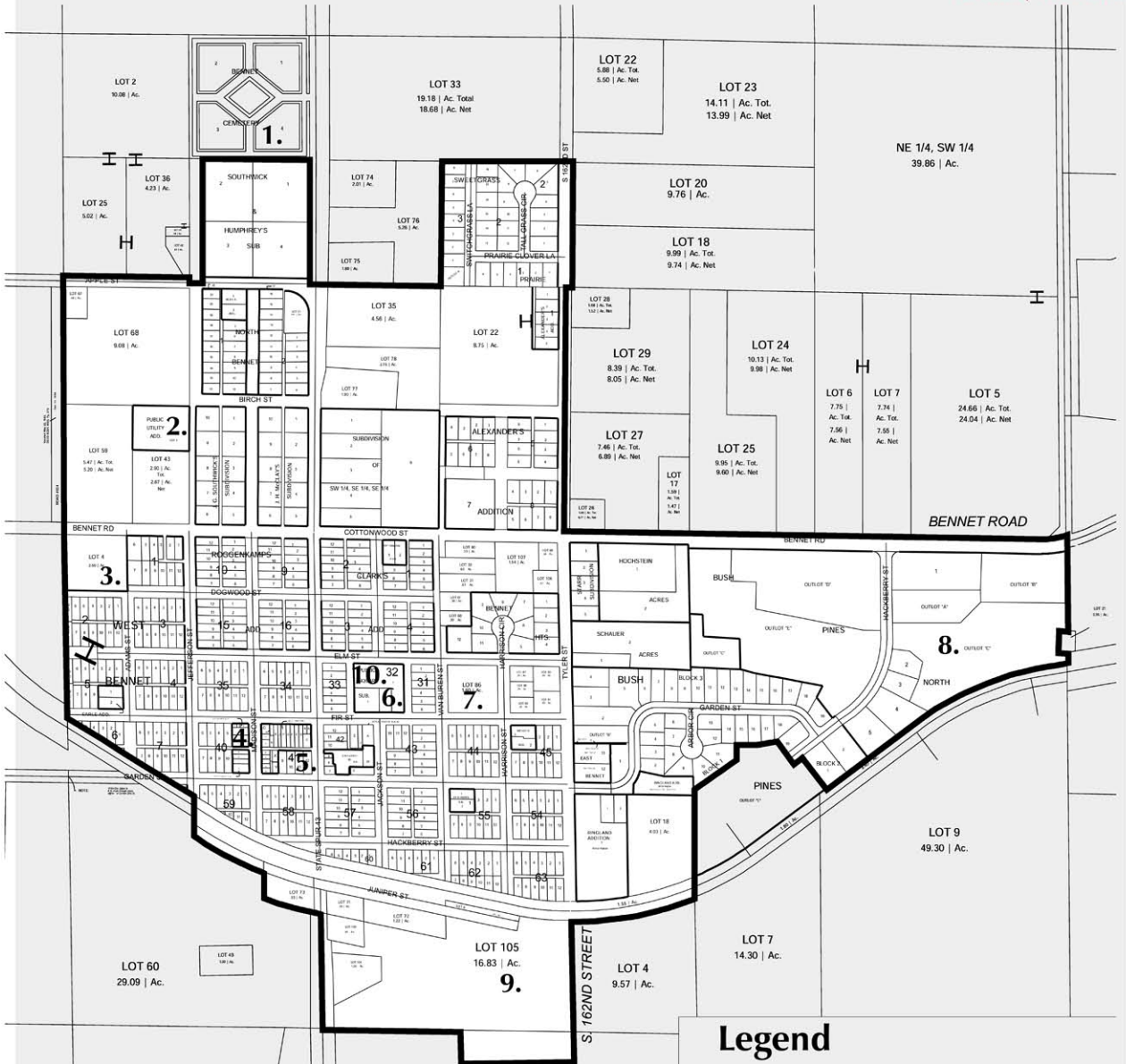
- ◆ The **Village Ballfield** is located on approximately 10 acres in the south of Bennet, along Juniper Street and near the Legion Hall. Amenities include modern restrooms, a concession stand, new outfield fence, and electronic scoreboard. The Legion baseball team schedules games here during the regular season.

FUTURE PARK SYSTEM PLANS

- ◆ Park maintenance and improvement has, and will continue to be, an important part of continuing the Community's excellent reputation in providing ample opportunities for recreation for its current and future residents.

Public Facilities Map

Corporate Limits
Bennet, Nebraska



- | | |
|-----|--------------------------|
| 1. | Bennet Cemetery |
| 2. | Water Tower |
| 3. | Bennet Elementary School |
| 4. | U. S. Post Office |
| 5. | Bennet Village Hall |
| 6. | Village Fire Hall |
| 7. | City Park |
| 8. | Whispering Pines |
| 9. | Legion Ballfield |
| 10. | "T" Ball Park |



Hanna:Keelan Associates, P.C.
Community Planning & Research
3275 Holdrege (402) 464-5383
P.O. Box 30552 fax: (402) 464-5856
Lincoln, NE 68503 email: planner@hannakeelan.com

digital illustration produced by:
402.560.4100 c. 8030 Thornview Road
402.489.5290 p. l. Lincoln, NE 68506
jamie.koenig@mindspring.com



EDUCATION

Education is becoming increasingly important as the need for a broader-based education with emphasis on technical and human relation skills increases in today's society. Standards developed by educators and planners can provide guidance in the creation of, and additions to, the School District's educational facilities.

Schools in Bennet should meet the following standards/guidelines:

- Schools should be centrally located;
- Schools should not be located near high traffic or heavily concentrated areas with high noise levels;
- Land acquisition should be made with future expansion in mind; and
- Adequate open space should be available to students.

AREA PUBLIC SCHOOLS

- ◆ The Palmyra District OR-1 serves the Village of Bennet and vicinity. Students from Bennet attend grades K through 6 at Bennet Elementary School, then attend grades 7 through 12 at Palmyra Junior/Senior High School, located approximately nine miles east of Bennet, in Palmyra. Bennet school aged children also option out of the Palmyra/Bennet School District in instances when parents work in other communities, or they desire programs, athletics, or services not available in the Palmyra/Bennet District. Bennet school age children are known to attend school in a variety of City of Lincoln public and private schools, or in adjacent Districts such as Norris Public Schools and Sterling Public Schools.

PALMYRA-BENNET PUBLIC SCHOOLS

- ◆ **Bennet Elementary School**, located in Bennet, contains 19 classrooms and a gymnasium. The Elementary School has computers in every classroom and a computer laboratory. Bennet Elementary enrolls 239 students, and the student to teacher ratio is 14:1. Although enrollment at the School is not currently growing, the projected growth in population of the community will help to increase enrollment as well.

- ◆ **Palmyra High School** contains grades 7 thru 12, and employs a certified staff of 25 to support an enrollment of 232 students. The High School is located in a building that was completely modernized and updated in 1998. The School houses three computer laboratories, and each classroom has at least one computer. Two portable computer “labs” contain computers with wireless Internet access. Special programs the School offers include: Title I programs, distance learning, and college credit-earning classes.

The Village of Bennet takes great pride in the local area school system and will continue to improve and expand its resources during the coming years. The majority of schools, particularly the elementary schools, expressed a need for expansion to continue to support the educational needs of the School Districts.

Created by the Nebraska Unicameral in 1965, Educational Service Units were intended to fill educational services gaps in local school districts budgets that did not provide for audio/visual aids, special education, school nurse services and other specialized personnel, equipment, or diagnostic needs.

Educational Service Unit #6 is headquartered in Milford and serves an area of southeast Nebraska, including Lancaster County and the school districts surrounding Bennet.

SOUTHEAST COMMUNITY COLLEGE

- ◆ **Southeast Community College** has two campuses which are easily accessible to Bennet residents, one in Lincoln and one in Beatrice. Programs the college offers include online courses, dual credit agreements with other schools, easy transferring of credits, and excellent computer access. The Community College is well connected within the surrounding area, and is planning to focus on promoting entrepreneurship and economic development within the region it serves.

OTHER EDUCATIONAL FACILITIES

- ◆ Some of the surrounding colleges and Universities within driving distance of the Bennet vicinity include:
 - Nebraska Wesleyan University** - Lincoln
 - University of Nebraska** - Lincoln
 - Doane College** - Crete and Lincoln
 - Union College** - Lincoln

LIBRARY

- ◆ The Village of Bennet does not currently have a library facility within its Corporate Limits. As residents of Lancaster County, however, the citizens of Bennet have access to libraries in other parts of the county, including the City of Lincoln library system. The nearest branch is Gere Public Library, located at 56th Street and Normal Boulevard, in Lincoln.

The Bookmobile Program serves the residents of Bennet every second Wednesday of the month, from 1:30 to 5 p.m., at the Bennet Community Church Parking Lot. This Program serves all age groups, and receives requests for specific materials. Materials checked out from Bookmobile may be returned at any Lincoln City library location, or back to the Bookmobile. Library personnel indicated that the Bennet Bookmobile location was the most well-used of all the 31 stops throughout Lincoln and Lancaster County.

MEDICAL / ELDERLY SERVICES

The Village of Bennet has all the necessary modern health and hospital services within reasonable distance of the Community. Regional health and elderly services available to the Village of Bennet include St. Elizabeth Regional Medical Center, Bryan LGH Hospitals, and the Madonna Rehabilitation Hospital, all in Lincoln, approximately 15 miles northwest of Bennet. In addition, the Lincoln-Lancaster County Public Health Department provides basic preventative medical care to all residents of Lancaster County, including Bennet.

ST. ELIZABETH REGIONAL MEDICAL CENTER

- ◆ The nearest health delivery facility in the Bennet area is the **St. Elizabeth Regional Medical Center**, located at 555 S. 70th Street in Lincoln, approximately 14 miles to the northwest. The Medical Center is a full service regional hospital equipped with a specialty clinic, fitness center and full laboratory. The 242-bed Hospital currently is associated with a physician's network of over 475 doctors and specialists.

At this time, the Hospital is currently adding on a physician's clinic, which is scheduled to open in 2006. This is the latest of four major expansions to the Hospital since it was first built in 1952, the most recent expansion being in 1997.

BRYAN LGH HOSPITAL

- ◆ **Bryan LGH Medical Center** is another full service regional hospital located within easy reach of Bennet residents. Bryan LGH has two main locations in Lincoln, as well as health clinics located throughout the city and the surrounding region. The Hospital provides a full array of medical services, including acute care, emergency unit, helicopter patient transport, outpatient care, pediatrics, pathology, radiology, and cardiac unit. With more than 4,000 staff and 583 licensed beds, Bryan LGH is one of the largest medical service providers in the region.

LINCOLN-LANCASTER COUNTY PUBLIC HEALTH DEPARTMENT

- ◆ Qualified residents may be eligible to receive reduced-cost services provided by the **Lincoln-Lancaster County Public Health Department**, which serves the Village of Bennet. Medical services offered at the Primary Health Clinic, located at 3140 N Street in Lincoln, include a Child Health Clinic, preventative care, immunization and flu clinics, and women’s health services. Nurses from the Public Health Department visit the Bennet Elementary School twice a month to offer free immunizations and basic health screenings to students and Bennet residents.

EUGENE TURBES COMMUNITY CENTER

- ◆ The **Eugene Turbes Community Center** is managed by the Local Chapter of the American Legion and is located on south Monroe Street (Highway 43), south of the railroad tracks. The hours of operation are every Thursday, from 9 a.m. to 3 p.m., and by appointment with the American Legion, on other days of the week. Approximately 40 to 55 people attend the “Senior Citizen” lunches offered on Thursdays. The American Legion hosts many events and activities by appointment, including concerts and social dinners, such as the Bi-Annual Soup Supper. A local board sets activities and programs for the Center through regular committee meetings. The building offers community space for public meetings and large gatherings. The facility meets all ADA standards.

Additionally, several senior citizens volunteer their time on Thursdays to deliver meals to elderly persons homes. The meals are delivered to the Community Center from the main kitchen at the Lincoln Senior Center, and distributed throughout the Bennet vicinity by the volunteer drivers.

GOVERNMENT / PUBLIC SAFETY

Public administration facilities are facilities which serve the citizens of the community and conduct the business of government and carry out its operations. Therefore, it is essential these services are centrally located and convenient to the majority of the citizens in the Community.

POLICE PROTECTION

- ◆ The Village of Bennet is served by the **Lancaster County Sheriff Department**, located at 575 S. 10th Street in Lincoln. There is no Local Law Enforcement Facility in the Village of Bennet. The County Sheriff Department has 70 commissioned officers, 18 part-time civilian employees, eight Building Security officers and the Chief of Police. The officers utilize a fleet of 60 patrol vehicles and various technological resources, such as radio communication, radars, video cameras and traffic control lasers. The Lancaster County facility maintains a 236-inmate capacity jail, located in Lincoln, at the Lancaster County Jail. Currently, the Village contracts for extra patrol hours per month with the Sheriff's Department. Sustained growth in Bennet might require the Village to hire a full-time officer, rather than contract for extra hours, as the Lancaster County communities of Waverly and Hickman have done.

FIRE PROTECTION

- ◆ The **Bennet Volunteer Fire Department and Rescue Squad** is a single entity governed by the Bennet Rural Fire District. The Fire Department has a total of 26 volunteers, including four officers, and the Rescue Squad has a total of three officers, plus associated staff and volunteers. The Department receives approximately 100 calls annually, about two-thirds of which are responding to non-fire related calls. The average response time for the Fire Department and Rescue Squad is 4 minutes within the Village, and up to 10 minutes throughout the entire 95 square mile service area. The Fire Department and Rescue Squad have various types of equipment available. Recent facility expansions and upgrades of equipment within the last five years have helped the Department keep up with current needs. **The Village has an ISO rating of "7".**

CIVIL DEFENSE

- ◆ **Civil Defense** is coordinated and planned by the Lancaster County Civil Defense Office, which coordinates civil defense along with local volunteer fire departments, throughout the county, in planning for public safety. Civil defense is responsible for notifying citizens in the case of an emergency. In the case of an emergency, a list of trained volunteers is maintained on an as-needed basis.

VILLAGE OFFICES

- ◆ The **Bennet Village Office** is located at 685 Monroe Street, in the Bennet Village Hall. The facility houses the Village Clerk/Treasurer, Utility Office, Maintenance and other administrative offices. The Village Board of Trustees Chambers and Fire and Rescue Offices are also located in Village Hall. The office is utilized for pertinent government committee meetings and public use. The office is not currently ADA compliant, Public meetings for the Planning Commission and Village Board of Trustees are held in the Community Center.

POST OFFICES

- ◆ The **U.S. Post Office** of Bennet is located at 605 Madison Street. The Post Office is open weekdays from 7:30-11:00 a.m. and from 1:00-4:15 p.m. The Post Office is also open Saturdays from 7:45-9:15 am. Located in a former bank building Downtown, the Post Office employs four staffed personnel, and is in compliance with all ADA standards, except for vehicle parking. The Bennet Post office has 264 postal boxes, with a rural route serving 427 rural box holders in the Bennet vicinity.

TRANSPORTATION PLAN

INTRODUCTION

The availability of a convenient and efficient transportation system is essential to the continued economic and physical development of Bennet. An adequate transportation system is required to transport goods and services to and from major travel routes and market centers outside the Village, and provide for the circulation needs within the Community. The overall purpose of the transportation plan is to provide the necessary guidelines for the safe movement of people and vehicles throughout the planning area.

The primary sources of information utilized to develop the Transportation Plan were (1) Bennet “One and Six Year Plans,” (2) Lancaster County “One and Six Year Plans” and (3) State of Nebraska Department of Roads “Nebraska Highway Program” (Fiscal Years 2006-2011 and Beyond).

EXISTING TRANSPORTATION SYSTEM

Illustration 6.2, State Functional Classifications, Bennet, Nebraska, depicts the transportation system in the Village of Bennet. The transportation system comprises of Nebraska State Spur Highway 43, a north/south “*Major Arterial*” road connecting Bennet to U.S. Highway 2, which is designated as an “*Expressway*,” All other streets within the Corporate Limits of Bennet are classified as local streets. Local streets provide transportation services throughout the Village, while the state highway and county roads provide transportation services into the county, adjacent communities and areas beyond.

Traffic Volume

The Nebraska Department of Roads monitors traffic volume in the Bennet area, on county roads and state and federal highways. This tabulation process is done to identify the appropriateness of the existing road classification and engineering standards. **Illustration 6.2** also identifies the average daily traffic counts for state and federal transportation routes around Bennet. Each of these road segments are identified as “major arterial” roads. All roads within the corporate limits of the Village of Bennet are classified as “local” roads.

Road Classifications

Nebraska Highway Law identifies the eight functional classifications of rural highways as follows:

- (1) **Interstate**: Which shall consist of the federally designated National System of Interstate and Defense Highways;
- (2) **Expressway**: Second in importance to Interstate. Shall consist of a group of highways following major traffic desires in Nebraska and ultimately should be developed to multilane divided highway standards;
- (3) **Major Arterial**: Consists of the balance of routes which serve major statewide interests for highway transportation in Nebraska. Characterized by high speed, relatively long distances, travel patterns;
- (4) **Scenic-Recreation**: Consists of highways or roads located within or which provide access to or through state parks, recreation or wilderness areas, other areas of geological, historical, recreational, biological, or archaeological significance, or areas of scenic beauty;
- (5) **Other Arterial**: Which shall consist of a group of highways of less importance as through-travel routes which would serve places of smaller population and smaller recreation areas not served by the higher systems;
- (6) **Collector**: Which shall consist of a group of highways which pick up traffic from many local or land-service roads and carry it to community centers or to the arterial systems. They are the main school bus routes, mail routes, and farm-to-market routes;
- (7) **Local**: Which shall consist of all remaining rural roads, except minimum maintenance roads;
- (8) **Minimum Maintenance**: Which shall consist of (a) roads used occasionally by a limited number of people as alternative access roads for area served primarily by local, collector, or arterial roads, or (b) roads which are the principal access roads to agricultural lands for farm machinery and which are not primarily used by passenger or commercial vehicles.

The rural highways classified, under subdivisions (1) thru (3) of this section should, combined, serve every incorporated municipality having a minimum population of 100 inhabitants or sufficient commerce, a part of which will be served by stubs or spurs, and along with rural highways classified under subsection (4) of this section, should serve the major recreational areas of the state. Sufficient commerce shall mean a minimum of two hundred thousand dollars of gross receipts under the Nebraska Revenue Act of 1967.

FUTURE BENNET TRANSPORTATION SYSTEM

The future transportation system in Bennet is outlined in the City **One and Six Year Road Improvement Programs**. Bennet's One-Year Plan is for projects to be undertaken in 2006. Bennet's Six Year Plan is for projects to be undertaken through 2011, or earlier if funding becomes available.

Village of Bennet - One-Year Road Plan

The One-Year Road Plan includes the following:

1. Normal Maintenance.

Village of Bennet - Six-Year Road Plan

The Six-Year Road Plan includes the following:

1. **M-151 (4)**: Asphalt resurfacing on Hackberry Street between Monroe and Jackson Streets. (\$15,000)
3. **M-151 (3)**: Grading, Drainage structures and Asphalt surfacing on Madison Street from Garden Street to Elm Street. (\$56,000)

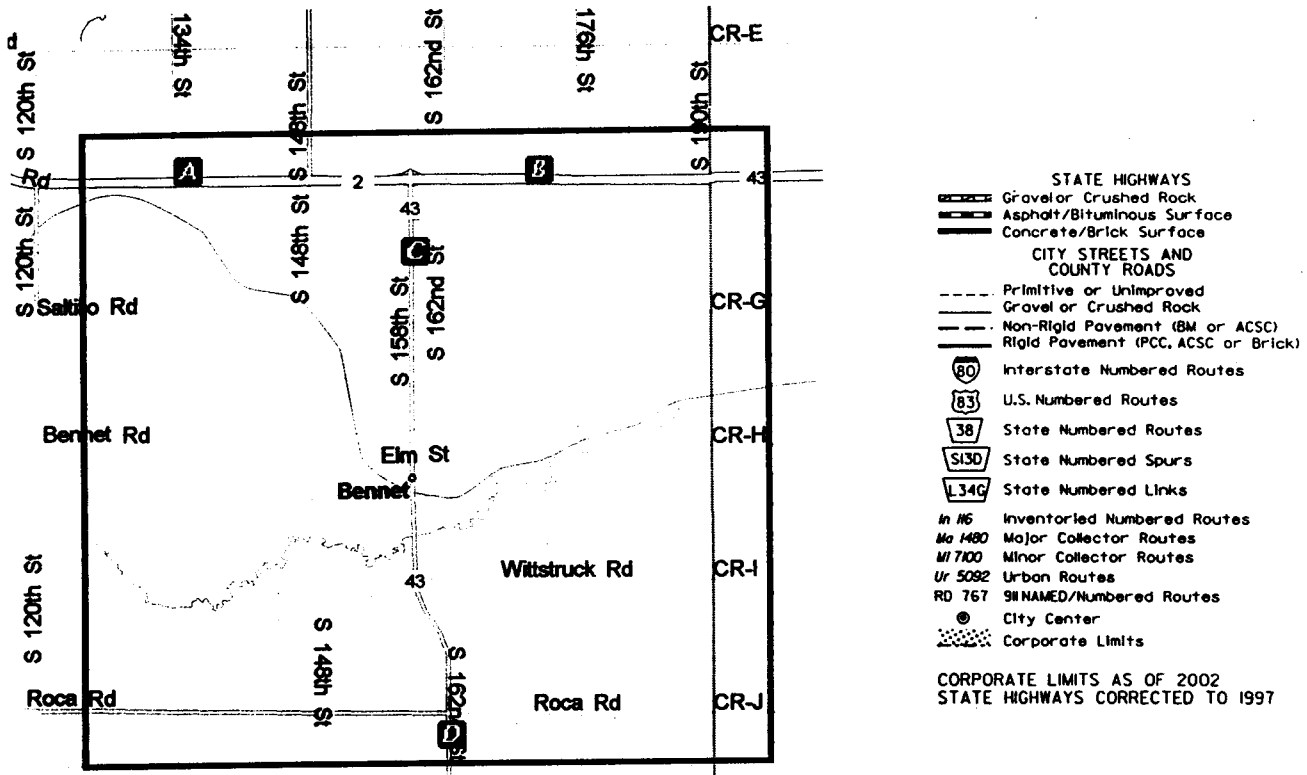
UPCOMING NEBRASKA DEPARTMENT OF ROADS PROJECTS WITHIN THE PLANNING JURISDICTION OF BENNET

The Nebraska Department of Roads has no projects to be completed in the Bennet planning jurisdiction within either the 2006 One-Year Roads Plan or the 2007 to 2011 Six-Year Roads Plan, or 2012 and Beyond Roads Plan.

UPCOMING LANCASTER COUNTY PROJECTS WITHIN THE PLANNING JURISDICTION OF BENNET

Lancaster County has no projects to be completed in the Bennet Planning Jurisdiction within the next several years.

STATE FUNCTIONAL CLASSIFICATIONS



	A	B	C	D
2004	12,595	10,085	4,500	2,580
	1,950	1,845	325	210
2002	11,790	9,424	4,425	2,375
	2,075	1,975	390	195
2000	9,730	7,570	3,675	2,215
	1,800	1,670	400	180

24 Hour average annual traffic
Motor Vehicles
Heavy Trucks

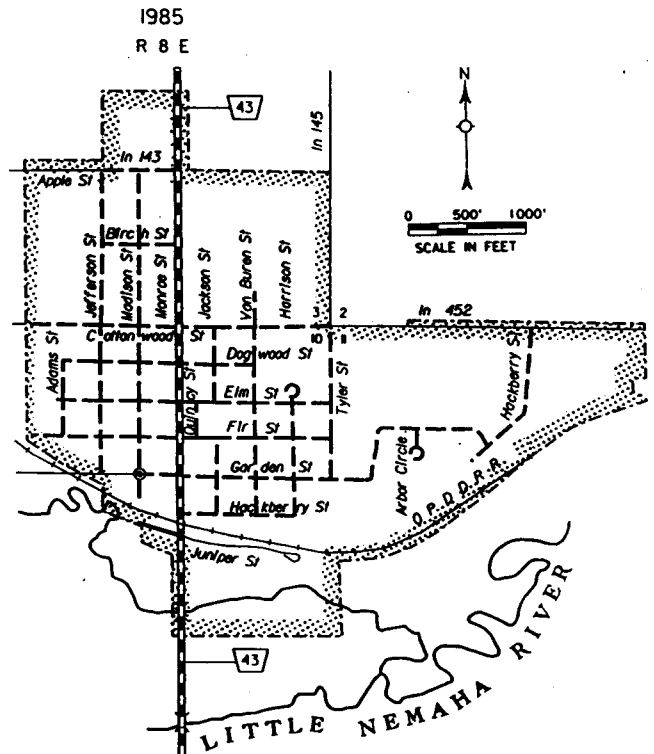
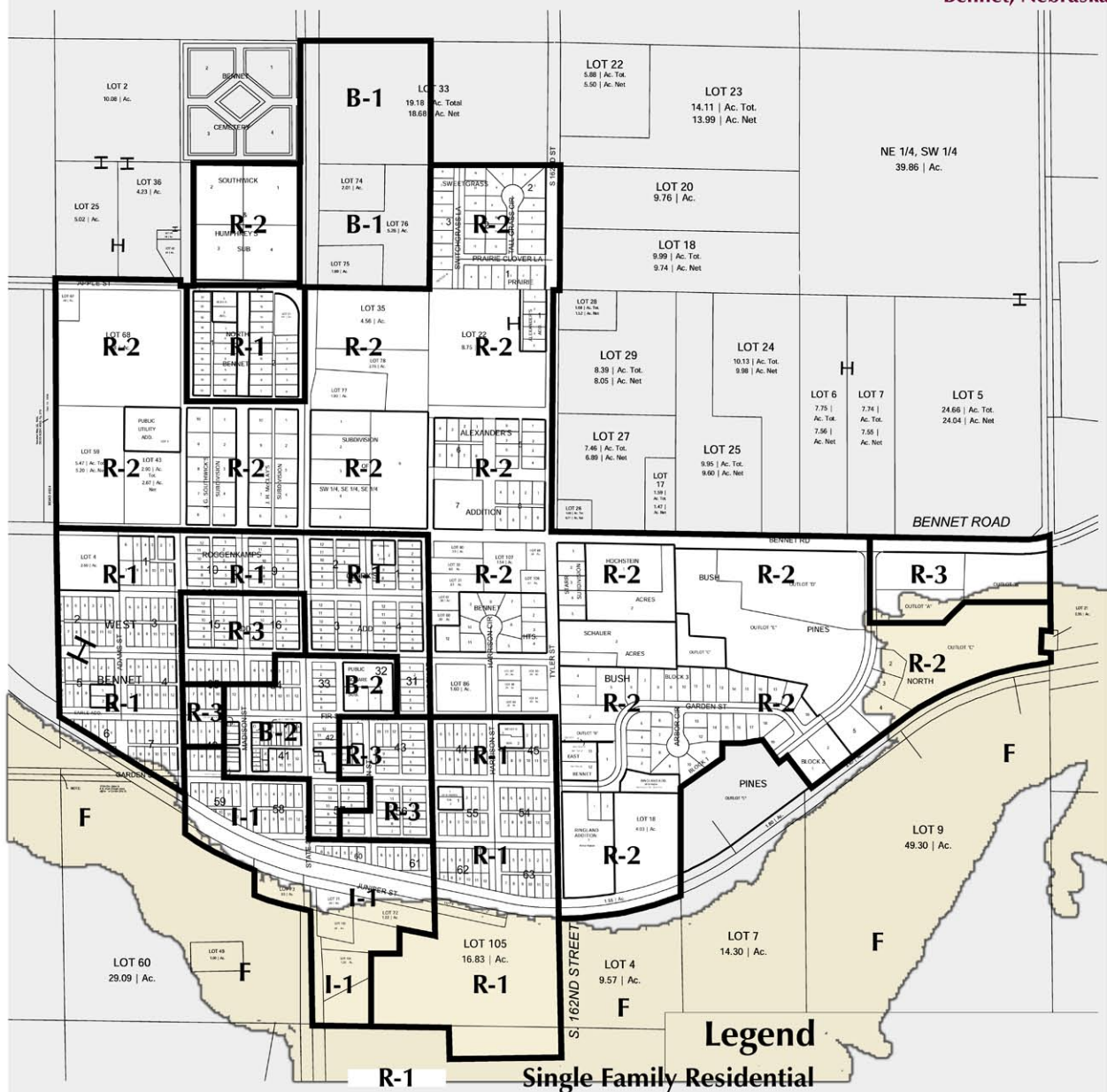


ILLUSTRATION 6.2

Official Zoning Map

Corporate Limits
Bennet, Nebraska



- Legend**
- R-1** Single Family Residential
 - R-2** Medium Density Residential
 - R-3** Multiple Family Residential
 - B-1** Local Business District
 - B-2** Central Business District
 - I-1** Light Industrial
 - I-2** Heavy Industrial
 - HO** Highway Overlay District
 - F** Flood Hazard District



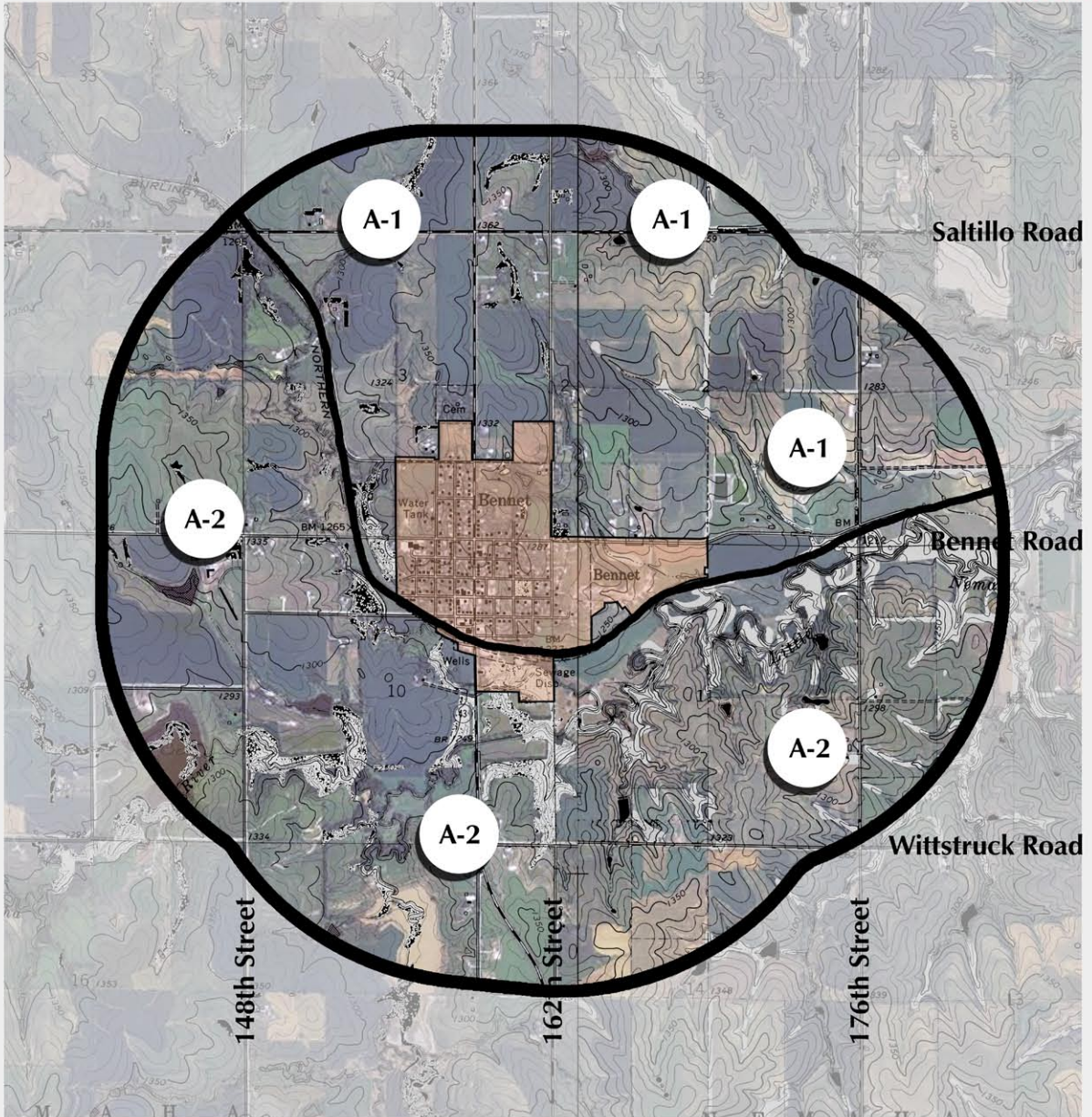
Hanna:Keelan Associates, P.C.
Community Planning & Research
3275 Holdrege (402) 464-5383
P.O. Box 30552 fax: (402) 464-5856
Lincoln, NE 68503 email: planner@hannakeelan.com

digital illustration produced by:
402.560.4100 c. 8030 Thornview Road
402.489.5290 p.f. Lincoln, NE 68506
jamie.koenig@mindspring.com



Official Zoning Map

Planning Jurisdiction
Bennet, Nebraska



Legend

A-1

Agricultural District

A-2

Rural Residential District

This is to certify that this is the Official Zoning Map referred to in Section xxx of Ordinance No. _____ of the Village of Bennet, Nebraska, adopted _____. The official zoning map of the area within the corporate limits and the planning jurisdiction area adjacent and one mile beyond the corporate limits of the Village of Bennet, Nebraska, together with all changes, amendments or additions thereto, shall be maintained in the office of the municipal clerk and available for public inspection during regular office hours.

Name Here _____

Date _____

Name Here _____

Date _____



Hanna:Keelan Associates, P.C.
Community Planning & Research
3275 Holdrege
P.O. Box 30552
Lincoln, NE 68503
(402) 464-5383
fax: (402) 464-5856
email: planner@hannakeelan.com

digital illustration produced by:
402-560-4100 c. 8030 Thornstew Road
402-489-5230 p. l. Lincoln, NE 68506
jamie.koenig@mindspring.com

Architecture **1** NE