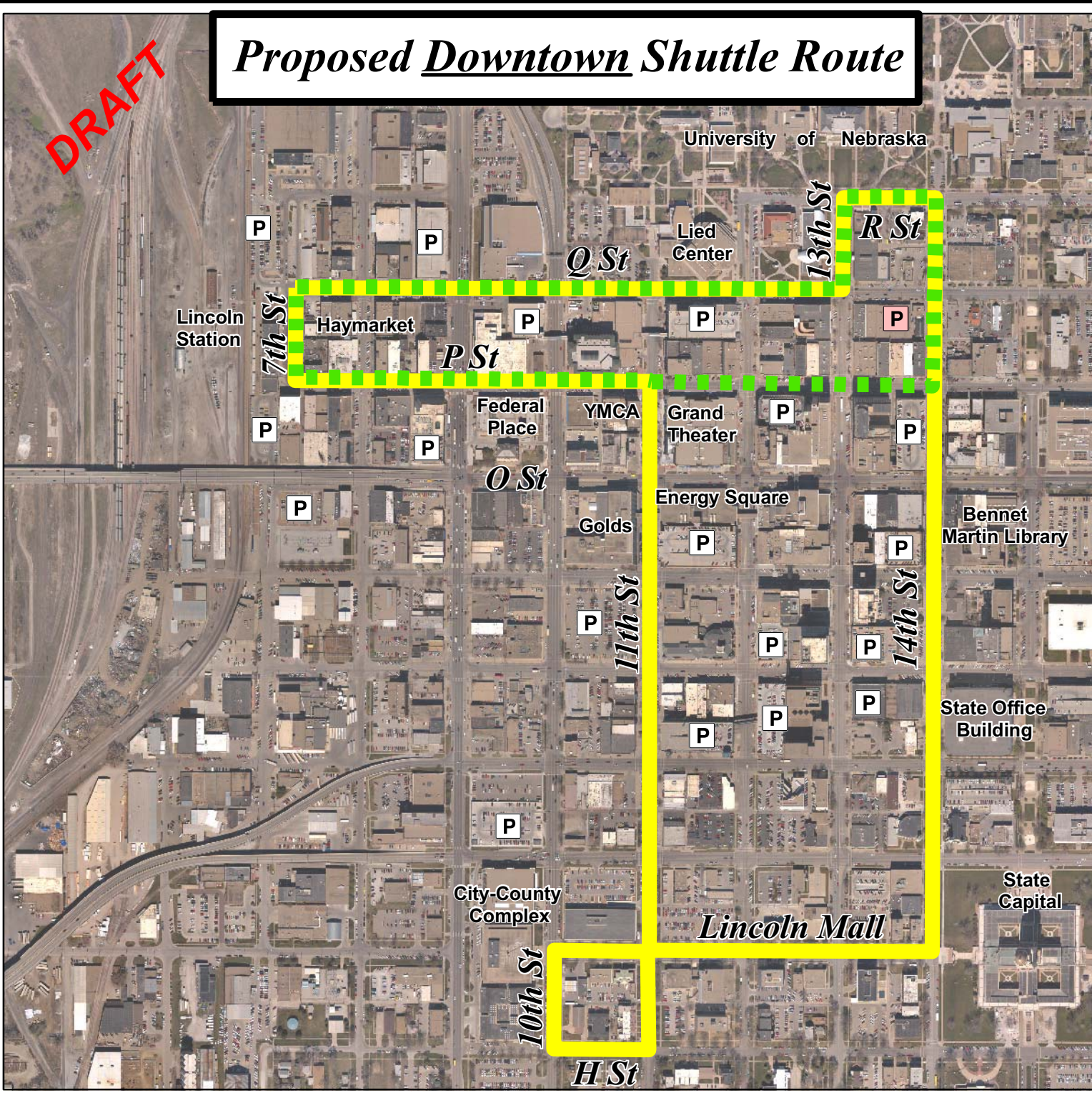






DRAFT

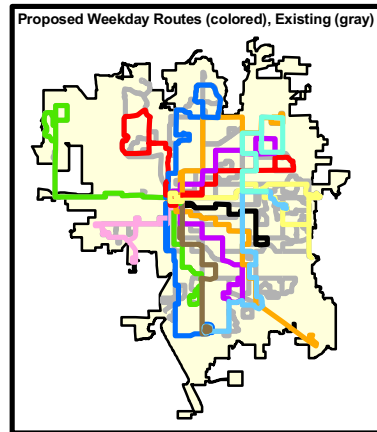
Proposed Downtown Shuttle Route



City of Lincoln Transit Development Plan

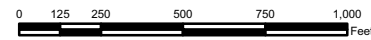
-  DAYTIME WEEKDAY SHUTTLE (6 AM - 6 PM)
-  NIGHT SHUTTLE (6 PM - 12 AM)
(Thurs, Fri, Sat)
-  EXISTING PARKING
-  FUTURE PARKING

Aerial Date: April 2005



Service Information:

- Downtown Shuttle: Daytime Shuttle-12 Hour Service Day**
Monday through Friday (6 a.m. to 6 p.m.)
20 Minute Off-Peak Service
10 Minute Peak Service (2 Hours at Lunch)
No Saturday Daytime Service
No Fares
- Downtown Shuttle: Nighttime Shuttle-6 Hour Service**
(6 p.m. to 12 Midnight)
Thursday/Friday/Saturday
8 Minute Service
No Fares



URBITRAN
URBAN REGIONAL TRANSIT AUTHORITY

