

## Stevens Creek Basin Sanitary Trunk Sewer Phase 1 - Construction Update

Lincoln Wastewater System (Project No. 701831)  
Updated: October 2006



Construction of Phase 1 of the Stevens Creek Trunk Sewer was completed in September 2006. This project was the first phase of a multi-phased project for providing sanitary sewer service to meet future growth in the Stevens Creek basin on the east side of the City.

The phased project is included in the [Wastewater Capital Improvements Program](#).

Phase 1 begins at the Northeast Wastewater Treatment Facility and generally extends to the southeast across Highway No.6 and Fletcher Avenue and ends just west of Stevens Creek, south of Fletcher Avenue and east of N. 84<sup>th</sup> St.

### **Stevens Creek Basin sanitary Trunk sewer – Phase 1 Alignment** [\(Click here to View a larger version of the Phase 1 Alignment Map\)](#)

Starting at the Northeast Wastewater Treatment Facility, the trunk sewer is 84-inches in diameter until it reaches the north side of the BNSF railroad and Highway 6. At this location the trunk sewer decreases in size to 72-inches in diameter to the end of the project just west of Stevens Creek and south of Fletcher Avenue.

The open cut trench method was used to install the majority of the pipe. Located along the sewer are several manholes (access locations) and junction structures which are designed to provide for access and accept future wastewater flows from smaller collector lines that will serve the areas where the sewer passes through.



Backfill operations on 84-inch diameter pipe

# Stevens Creek Sanitary Trunk Sewer – Phase 1 Construction Update - October 2006

Three reaches of the project that cross underneath roadways and the BNSF railroad were installed using trenchless or tunneling technology. This type of installation technology provided for vehicular traffic and railroad traffic to continue without interruption. The longest tunnel crossed under the two BNSF railroad tracks and Highway No. 6. The remaining two tunnel installations crossed under Fletcher Avenue just west of N. 84<sup>th</sup> St., and under N. 84th St. and the Lincoln Electric System (LES) high voltage transmission line on the east side of N. 84<sup>th</sup> St.



Tunnel Boring Machine - 72-inch diameter pipe crossing under BNSF Railroad & Hwy No. 6

## Project Summary

### General Project Information:

- **Overall Length:** 5,836 feet
  - 2,817 ft 84-inch diameter
  - 2,684 ft 72-inch diameter
  - 335 ft 60-inch diameter

### Tunneled under-crossings:

- 410 ft 72-inch diameter – Hwy #6 & BNSF RR.
- 270 ft 72-inch diameter – Fletcher St.
- 176 ft 72-inch diameter – N. 84<sup>th</sup> St.

**Total Project Cost:** \$7,344,880  
**Construction Contract Cost:** \$6,255,100  
**Funding:** Sanitary Sewer Revenue Funds



Junction Structure near Northeast Treatment Facility – 84-inch diameter & 60-inch diameter pipe

## Construction Project Schedule

**Notice to Proceed:** September 12, 2005  
**Substantial Completion:** June 7, 2006  
**Final Completion:** July 7, 2006

## Project Contacts

### Construction Contractor

S.J. Louis Construction Inc.  
John Pennekamp – Construction Manager  
(320) 253-9291

### Lincoln Wastewater System

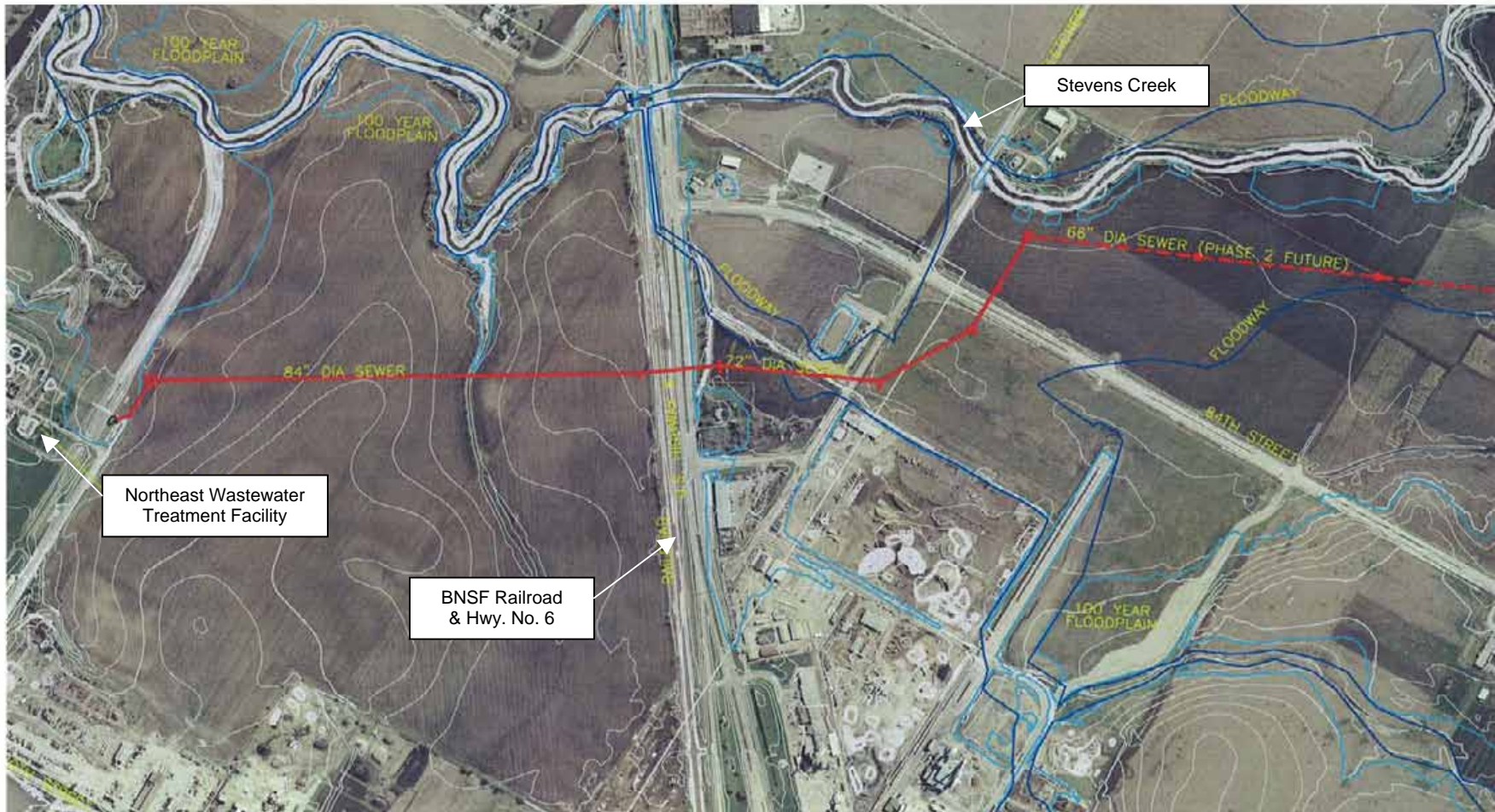
Brian Kramer – Project Manager,  
Supt. Of Wastewater Collection  
(402) 441-7987  
email: [bakramer@lincoln.ne.gov](mailto:bakramer@lincoln.ne.gov)

### Consulting Engineer – Carollo Engineers

Pat McCole – Partner-in-Charge  
Brian Clow – Project Manager  
(913) 663-1788  
email: [bclow@carollo.com](mailto:bclow@carollo.com)

## Links to Previous Stevens Creek Information and Past Fact Sheets

Stevens Creek Basin [Alignment Study](#) and [Preliminary Design Report](#)  
Mayor's Press Release, Dec.1, 2005 - [Construction Begins On First Stevens Creek Trunk Sewer Project](#)  
Mayor's Office - [2005 Photo Gallery Page 26](#)



**Stevens Creek Basin Sanitary Trunk Sewer – Phase 1 Alignment  
2006  
(City Project No. 701831)**