

prepared for



LINCOLN

NEIGHBORHOOD HOUSING SERVICE

**2625 S Street, Lincoln, NE 68503
477-7181**

&



by
**Justin Van Mullem
& Ed Zimmer**

LINCOLN



LINCOLN-LANCASTER COUNTY PLANNING DEPARTMENT

When planning a color scheme, it's often fun and helpful to see what other people are doing. Some noteworthy recent paint jobs in the area include:

Queen Anne

Sheldon House, **2525 N Street**. A subtle and sophisticated change from an all-yellow house.

Taylor Cottage, **3050 N Street**. Bold and bright, this formerly all-white house now celebrates its rich ornamentation. **817 So. 31st Street**, a Queen Anne-style house of the 1880s with a bungalow-type porch of the 1920s, successfully uses blues, pinks, and white to harmonize the differing styles.

Prairie Box

South 28th Street between J and L Streets has several handsomely painted examples of this house type.

Bungalow

3404 M Street, freshly painted in blue with white trim, is far livelier than in its former all-white state. The neighboring **3350 M Street**, a brick-and-stucco bungalow, is replacing brown trim and yellow stucco with several shades of green, and deep purple accents.



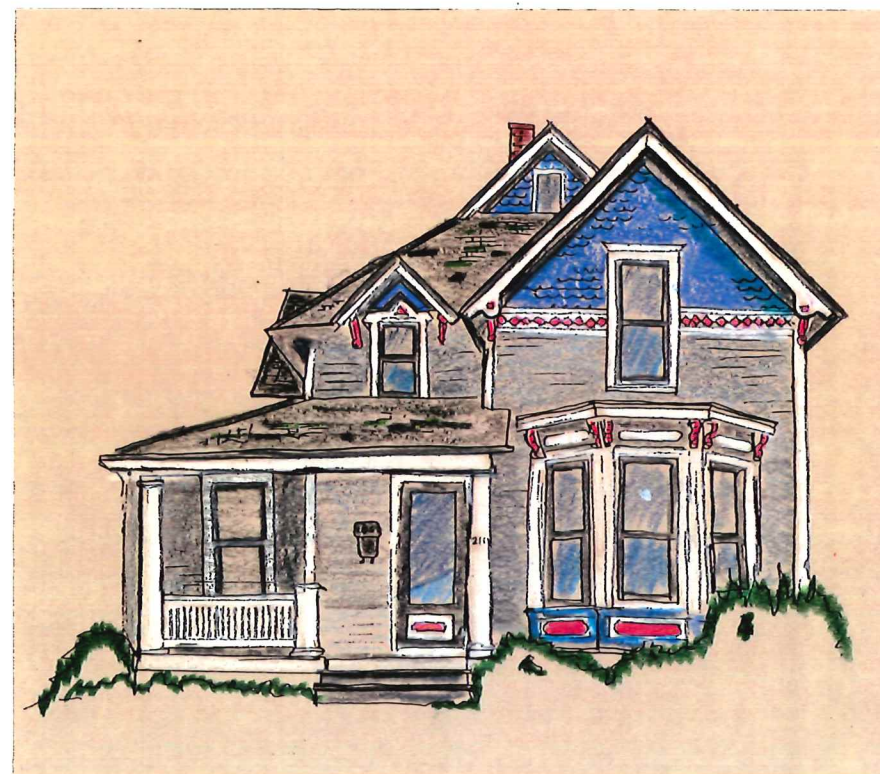
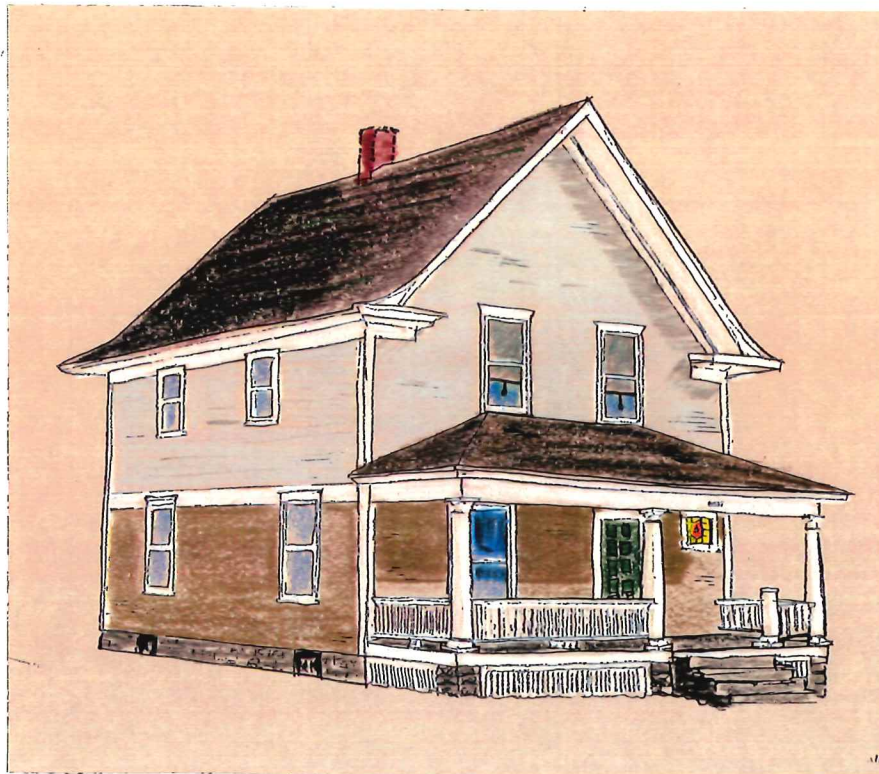
Coloring

is not just for Kids!

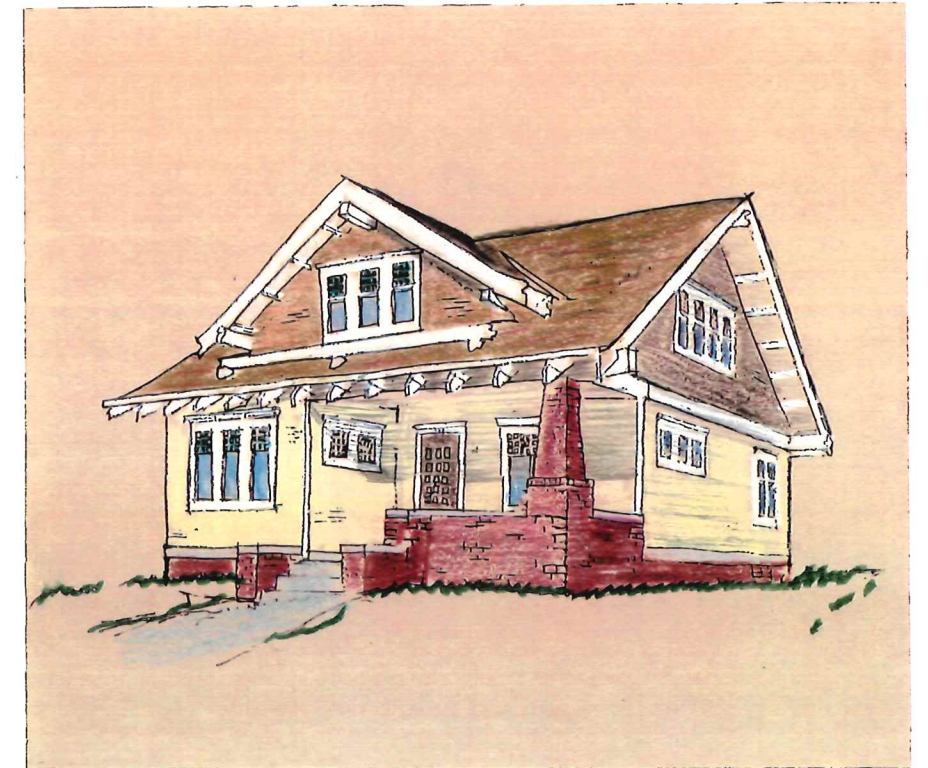
A newly painted all-white house looks fresh and clean, but commonplace. Our older houses in Lincoln are more than ordinary, and picking several paint colors to emphasize their unique features makes their special qualities shine through. The best paint jobs draw a little from the past and a lot from the present owners, expressing the character of the house and of its owners. To do a colorful paint scheme, you begin by understanding the style of the house and studying the features that deserve to be highlighted.



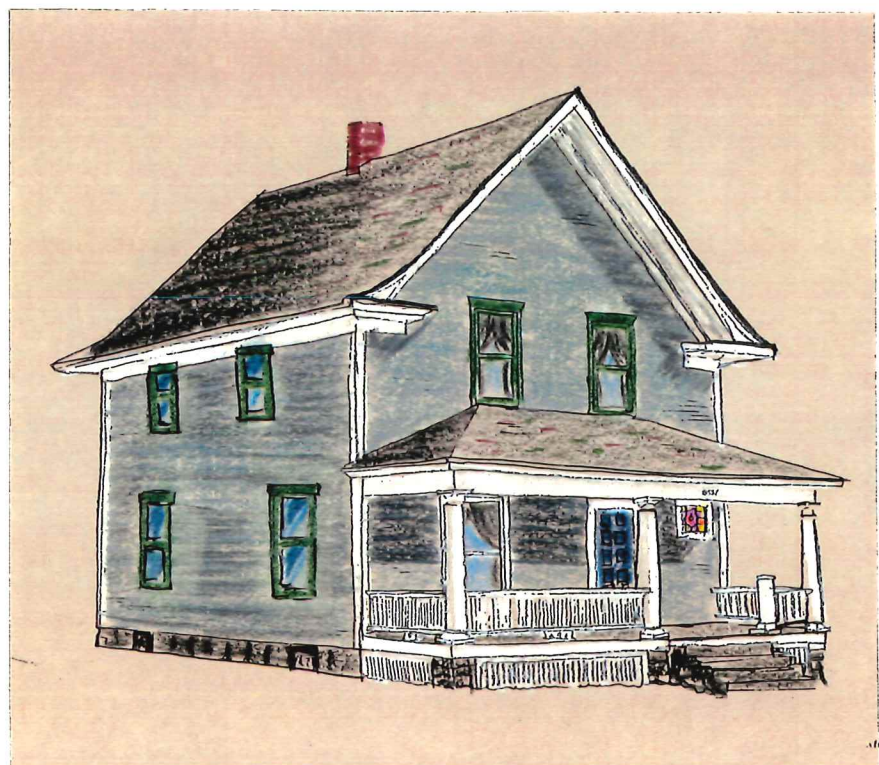
Picking the right colors makes the difference between black & white and...



Bungalows were built in Lincoln from 1910 through the 1920s. They range from small one-story versions to larger houses with second floors, but all bungalow roofs are low-pitched and sweep down to the first story level. Bungalow builders favored natural materials and less intense colors, often combining two or more shades of greens, browns, reds, or other "earth" colors.



The most ornate houses in the neighborhood (usually the oldest ones) display the Queen Anne style with complex rooflines and decorative shingles and spindles. These houses look wonderful with bold and bright color schemes, highlighting their fine details. The main body often displays two or more related colors, with the trim highlighted in more intense and even contrasting colors.



Lincoln houses built between 1900 and 1925 that have simple, boxy forms and full-length front porches are often called "Prairie Boxes." The porch columns and railings and other major trim (eaves, corner boards, and so on) often look best in white or another very light tone. Rather than white, consider a deeper tone for the clapboard siding, and save the most intense color for the window trim and doors.

