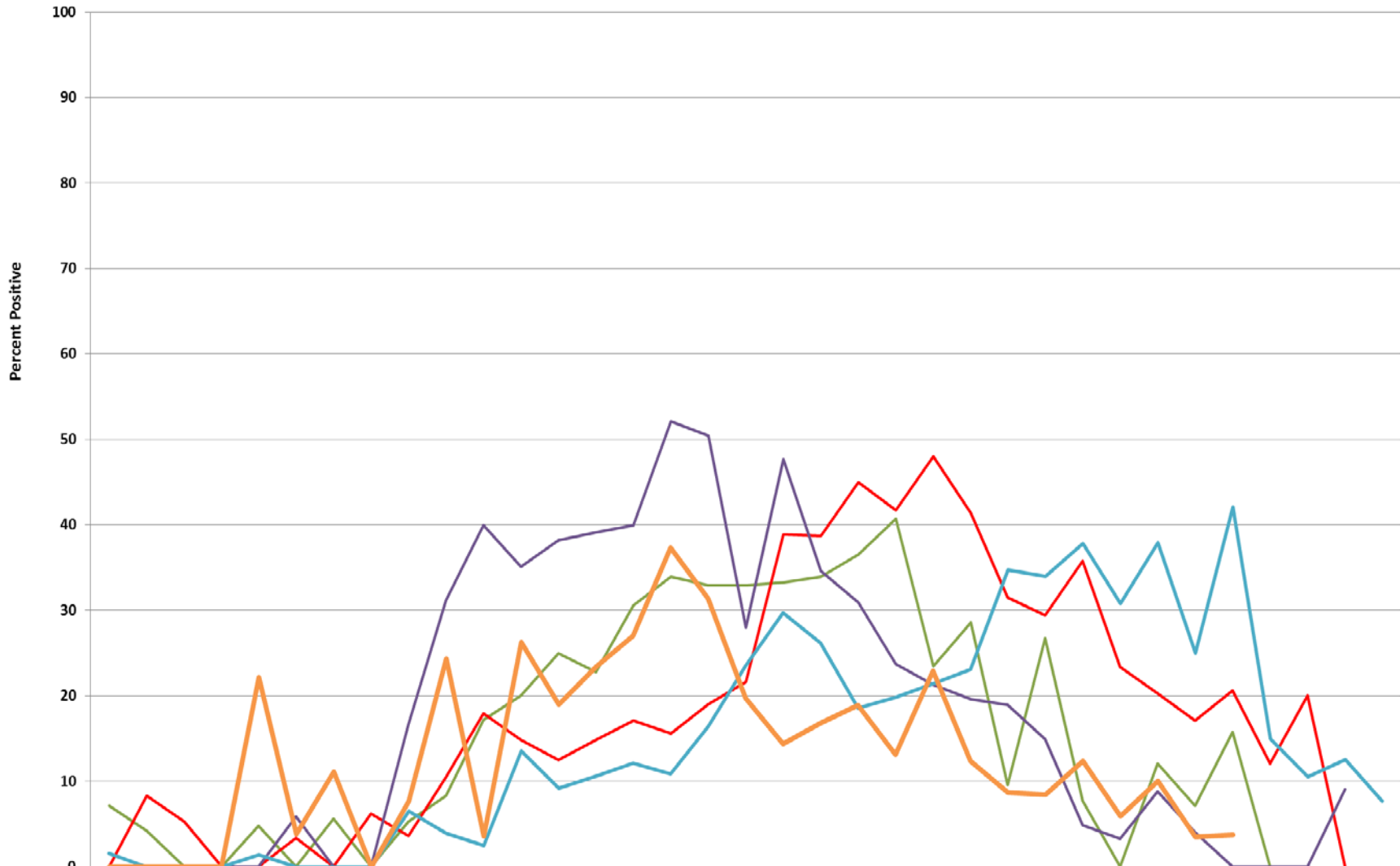


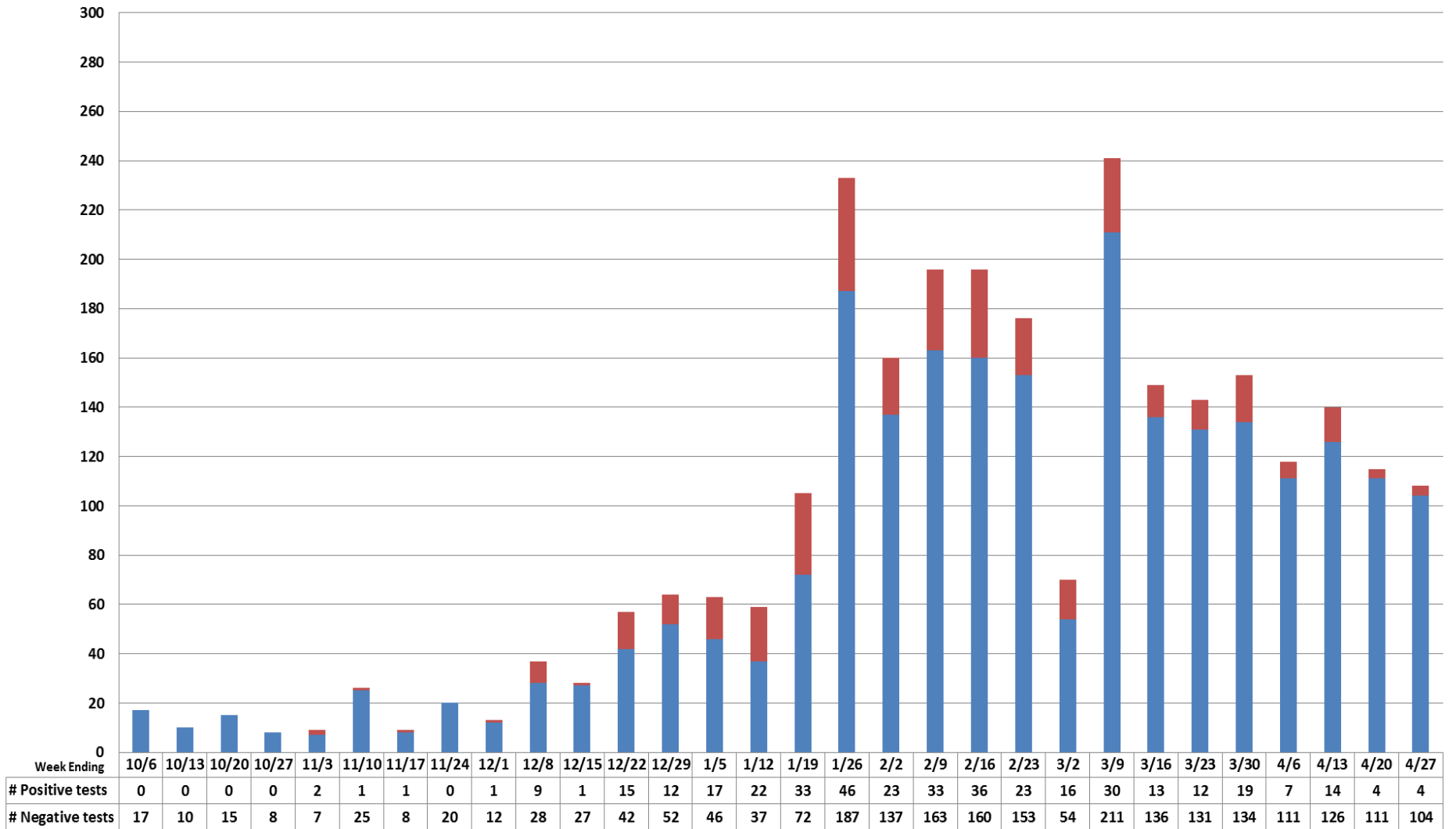
Percentage of RSV Positive Tests
 Week ending April 27, 2019 (MMWR Week 17)
 Lancaster County Laboratories



MMWR Week	40	41	42	43	44	45	46	47	48	49	50	51	52	53	1	2	3	4	5	6	7	8	9	10	11	12	13	14	15	16	17	18	19	20	21	
2014-15	7.1	4.2	0	0	4.8	0	5.6	0	5.3	8.3	17.2	20	25	22.8	30.6	33.9	32.9	32.9	33.3	33.9	36.5	40.7	23.5	28.6	9.6	26.7	7.7	0	12.1	7.1	15.8	0				
2015-16	0	8.3	5.3	0	0	3.4	0	6.2	3.6	10.5	17.9	14.8	12.5	14.8	17.1	15.6	19	21.6	38.9	38.7	45	41.7	48	41.4	31.5	29.4	35.8	23.4	20.3	17.1	20.6	12.1	20	0		
2016-17	0	0	0	0	0	5.9	0	0	16.7	31.2	40	35.1	38.2	39.1	40	52.1	50.4	28	47.7	34.6	30.9	23.7	21.3	19.6	18.9	14.9	4.9	3.3	8.8	4	0	0	0	9.1		
2017-18	1.6	0	0	0	1.4	0	0	0	6.5	3.9	2.5	13.5	9.2	10.6	12.1	10.9	16.4	23.5	29.7	26.2	18.6	19.8	21.4	23.1	34.7	34	37.8	30.8	37.9	25	42.1	15	10.5	12.5	7.7	
2018-19	0	0	0	0	22.2	3.8	11.1	0	7.7	24.3	3.6	26.3	19	23.4	27	37.3	31.4	19.7	14.4	16.8	18.9	13.1	22.9	12.4	8.7	8.4	12.4	5.9	10	3.5	3.7					
2018-19 week ending	10/6	10/13	10/20	10/27	11/3	11/10	11/17	11/24	12/1	12/8	12/15	12/22	12/29		1/5	1/12	1/19	1/26	2/2	2/9	2/16	2/23	3/2	3/9	3/16	3/23	3/30	4/6	4/13	4/20	4/27					

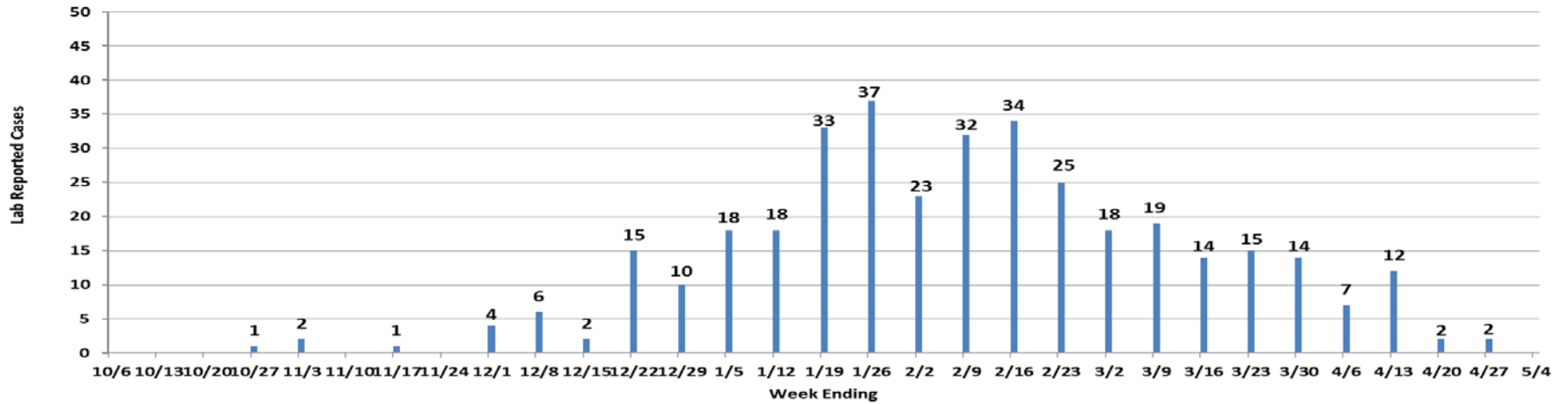
MMWR Week 53 is average of week 52 and week 1

Weekly RSV LabTests By Test Result
Lancaster County Laboratories
2018-2019

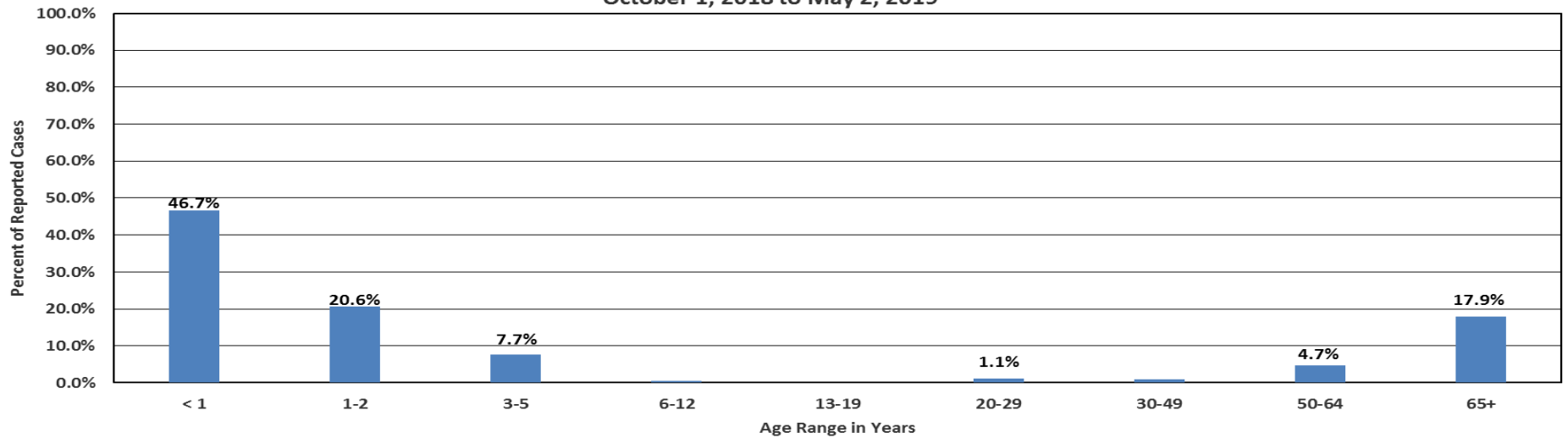


■ # Negative tests ■ # Positive tests

Lancaster Co. Reported RSV Cases (N=364)
 By Week Specimen Collected
 May 2, 2019



Percent of Reported RSV Cases (N=364)
 By Age Range
 Lancaster County
 October 1, 2018 to May 2, 2019



Lancaster Co. Reported RSV Positive Lab (N=364)
By Test Type and Week Specimen Collected
May 2, 2019

