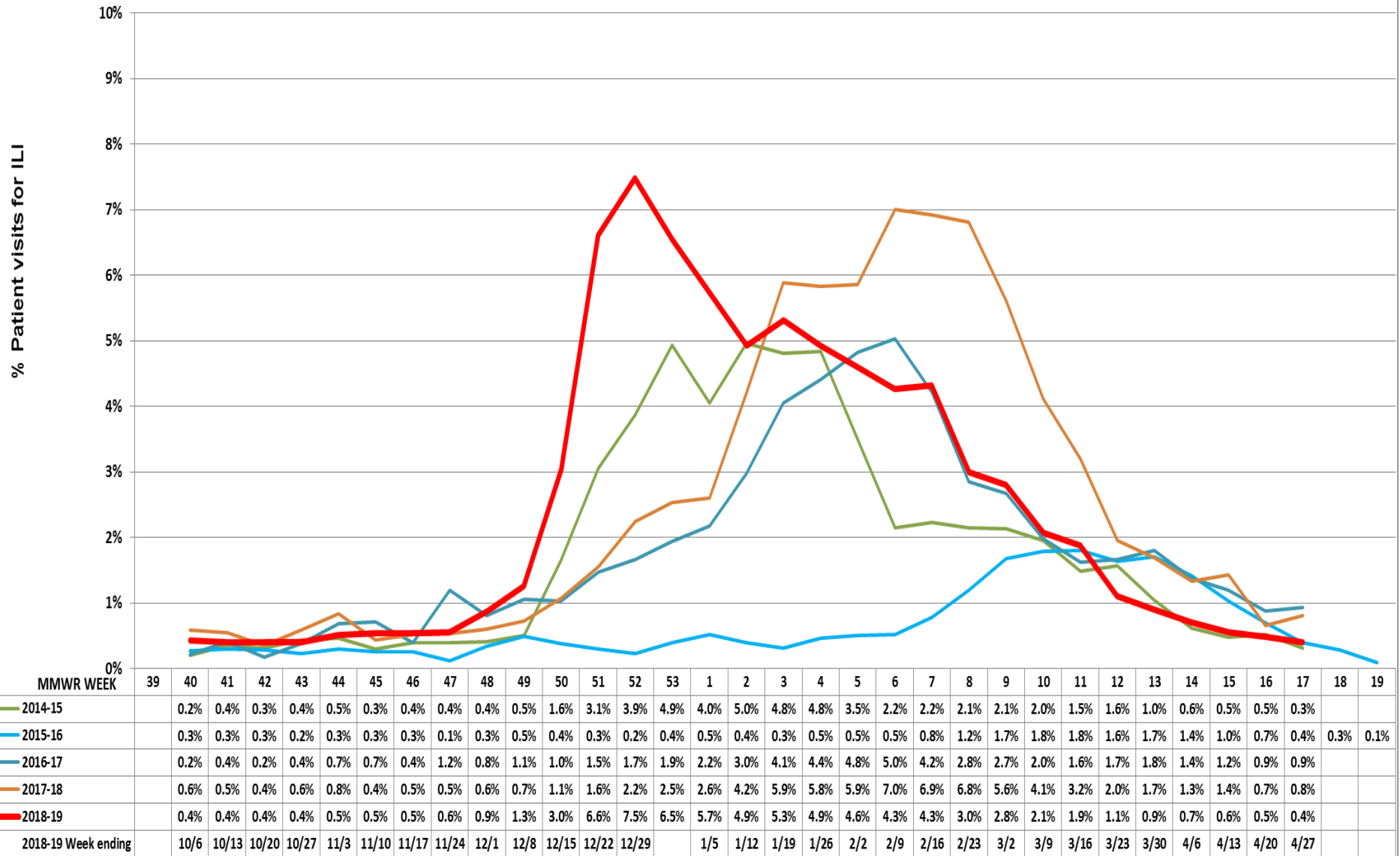


**Percent of Provider Visits for Influenza-Like Illness (ILI)**  
**Week Ending April 27, 2019 (MMWR Week 17)**  
**Lancaster County**

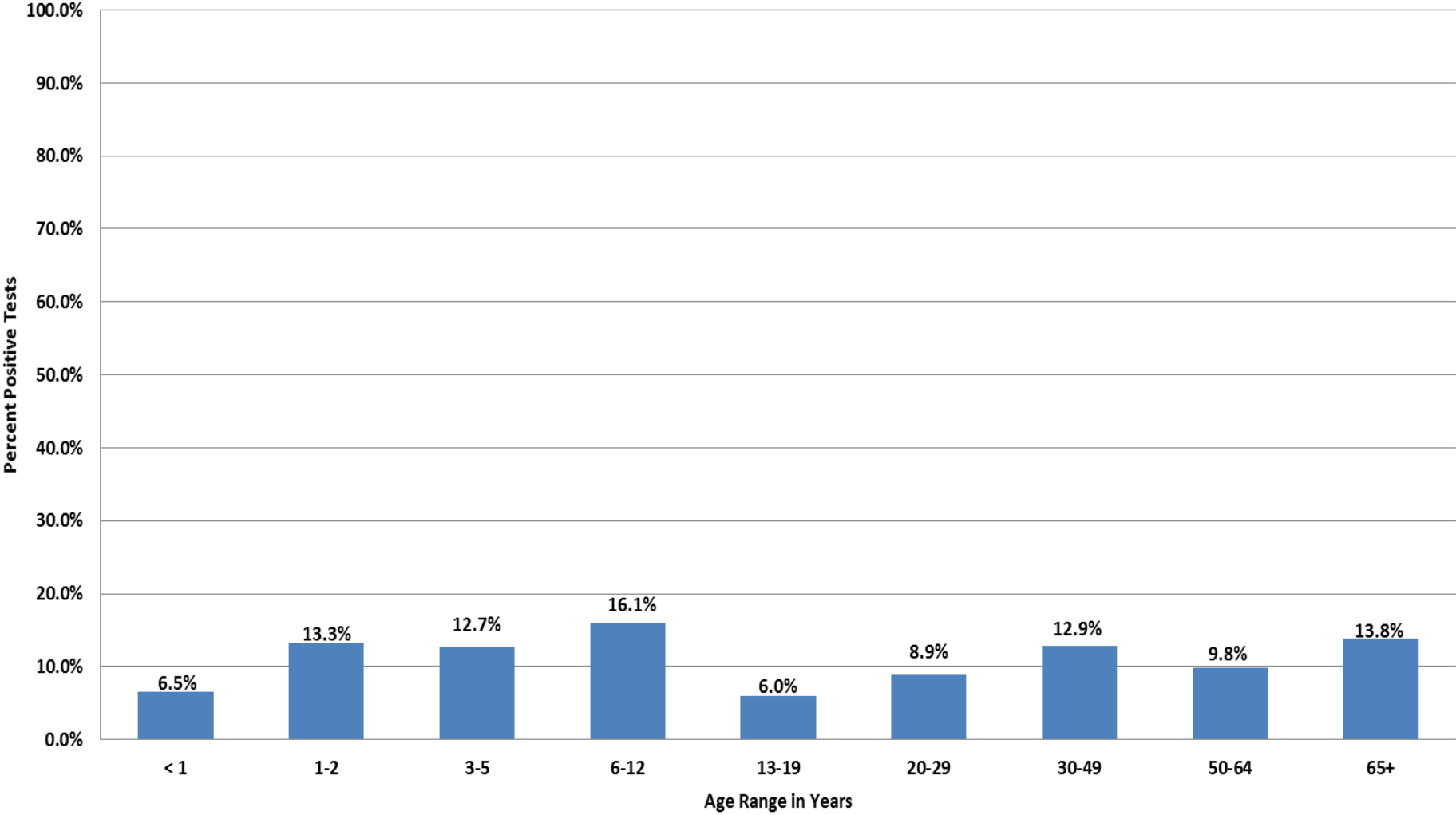


24 Local Provider Practices

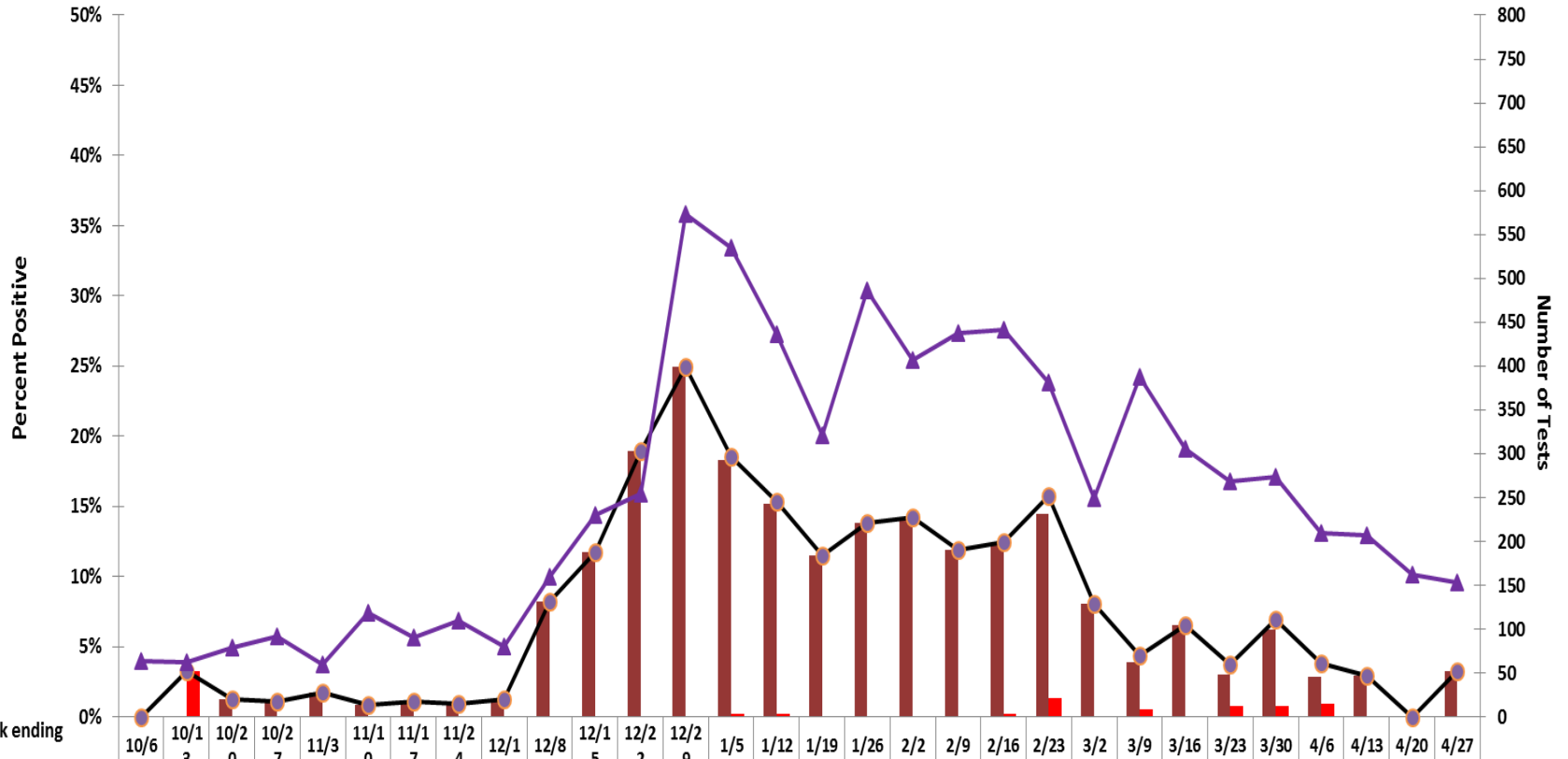
MMWR Week 53 is average of week 52 and week 1

# Percent Positive RIDT and Confirmatory Lab Tests (N=1196)

By Age Range  
Lancaster County  
May 2, 2019

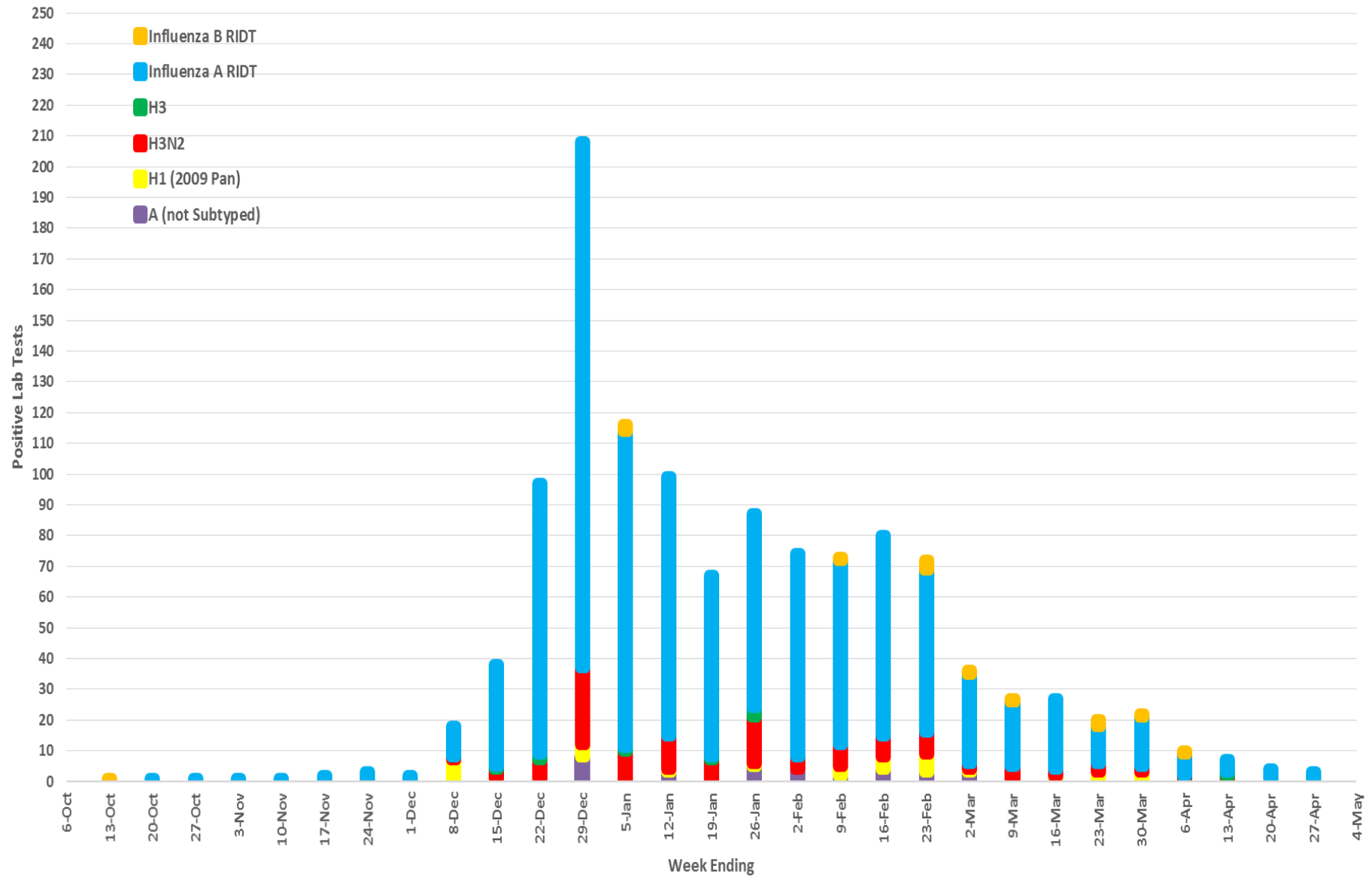


**2018-2019 Influenza Season**  
**Weekly Clinical Laboratory Influenza Tests Performed**  
**and Percent Positive by Type**  
**Lancaster County**

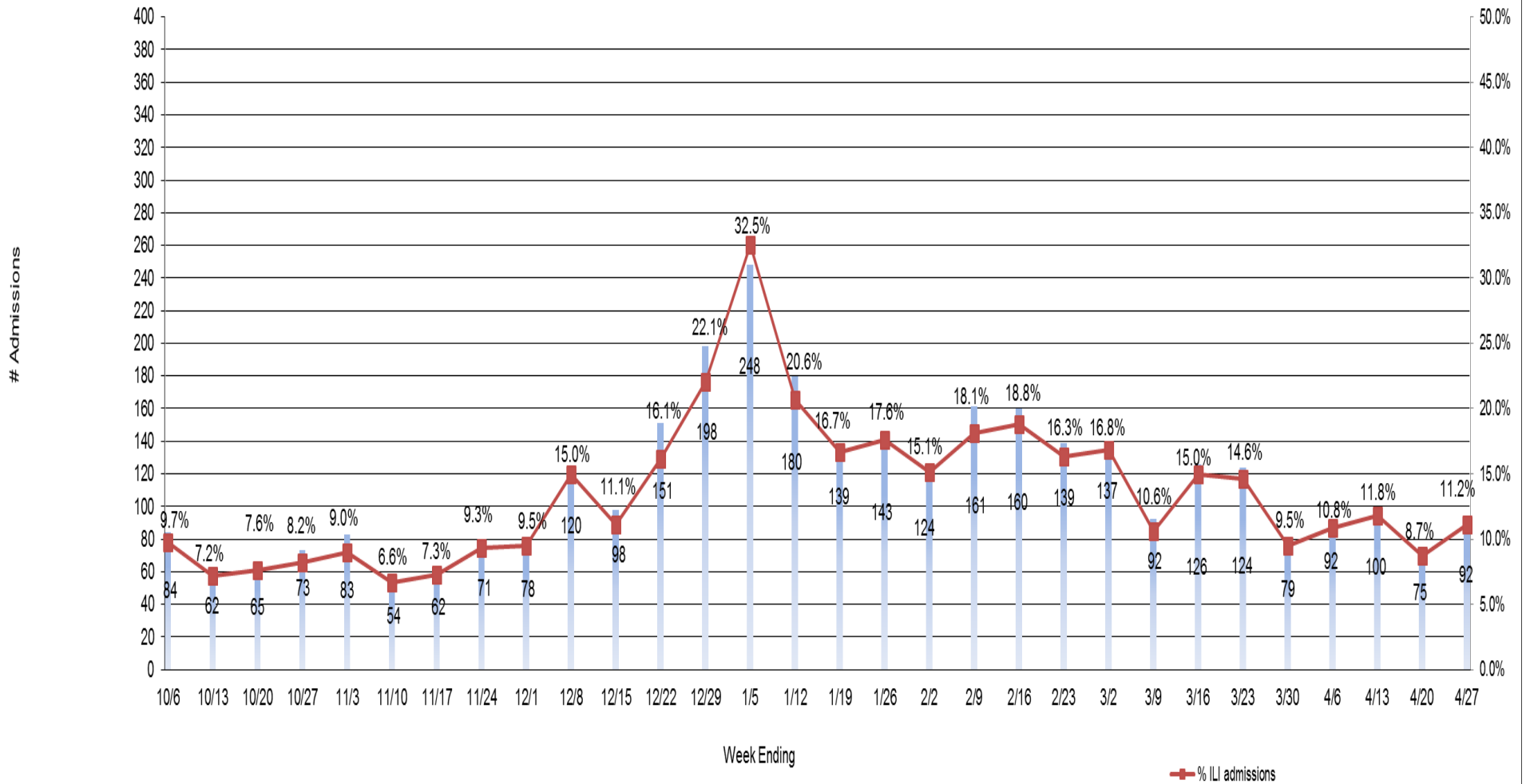


Week ending	10/6	10/13	10/20	10/27	11/3	11/10	11/17	11/24	12/1	12/8	12/15	12/22	12/29	1/5	1/12	1/19	1/26	2/2	2/9	2/16	2/23	3/2	3/9	3/16	3/23	3/30	4/6	4/13	4/20	4/27
% Pos Type A	0.0%	0.0%	1.3%	1.1%	1.7%	0.8%	1.1%	0.9%	1.3%	8.2%	11.7%	18.9%	25.0%	18.3%	15.1%	11.5%	13.8%	14.3%	11.9%	12.2%	14.4%	8.0%	3.9%	6.5%	3.0%	6.2%	2.9%	2.9%	0.0%	3.3%
% Pos Type B	0.0%	3.2%	0.0%	0.0%	0.0%	0.0%	0.0%	0.0%	0.0%	0.0%	0.0%	0.0%	0.2%	0.2%	0.0%	0.0%	0.0%	0.0%	0.0%	0.2%	1.3%	0.0%	0.5%	0.0%	0.7%	0.7%	1.0%	0.0%	0.0%	0.0%
%Total Positivity(A&B)	0.0%	3.2%	1.3%	1.1%	1.7%	0.8%	1.1%	0.9%	1.3%	8.2%	11.7%	18.9%	25.0%	18.5%	15.4%	11.5%	13.8%	14.3%	11.9%	12.5%	15.7%	8.0%	4.4%	6.5%	3.7%	7.0%	3.8%	2.9%	0.0%	3.3%
# Tests Performed	63	62	79	92	59	119	90	110	80	159	230	254	573	535	436	321	486	407	437	441	381	249	387	306	269	273	210	207	162	153

Positive Influenza Lab Tests Reported  
 By Week Collected  
 Lancaster County - 2018-2019  
 May 2, 2019



Number and Percent of Weekly Hospital Admissions For Flu-Like Illness  
 Lancaster County  
 2018-2019



**School Flu-Like Illness by Week Reported**  
**Lancaster County Rural & Parochial Schools Surveillance**  
**Week Ending April 27, 2019 (MMWR Week 17)**

