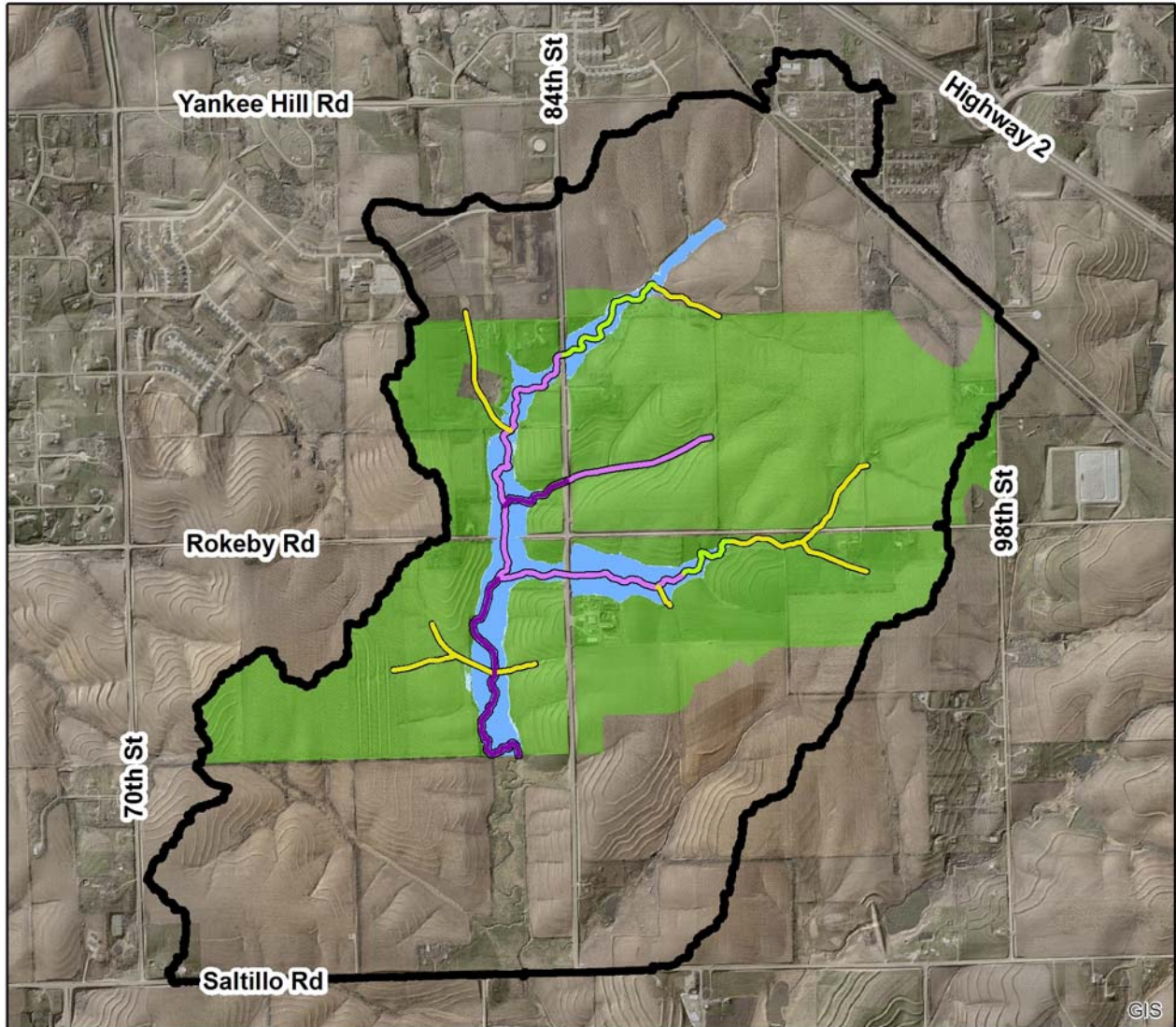


# Upper Wagon Train Watershed Master Plan



PREPARED FOR:

PREPARED BY:

*The Rokeby Coalition*



8200 Cody Drive, Suite A  
Lincoln, NE

February 2017



## Table of Content

<b>Executive Summary</b> .....	<b>ES-1</b>
<b>PART 1 – EXISTING WATERSHED CONDITIONS</b>	
<b>Watershed Description</b> .....	<b>1-1</b>
<b>Data Compilation and Collection</b> .....	<b>1-2</b>
Watershed Studies .....	1-2
GIS Datasets .....	1-2
Field Measured Data .....	1-2
<b>Hydrology</b> .....	<b>1-2</b>
Rainfall .....	1-2
Subbasin Delineation .....	1-2
Runoff Volume .....	1-3
Runoff Hydrograph .....	1-4
Routing .....	1-4
Results .....	1-6
<b>Hydraulics</b> .....	<b>1-7</b>
River System .....	1-7
Cross Section Geometry .....	1-7
Cross Section Properties .....	1-7
Road Crossings .....	1-7
Flow Data .....	1-8
Results .....	1-8
<b>PART 2 – FUTURE WATERSHED CONDITIONS</b>	
<b>Future Hydrology</b> .....	<b>2-2</b>
Future Subbasin Delineation .....	2-2
Future Runoff Volume .....	2-3
Future Runoff Hydrograph .....	2-3
Future Routing .....	2-3
Future Results .....	2-4
<b>Future Hydraulics</b> .....	<b>2-7</b>
Future River System .....	2-7
Future Cross Section Geometry .....	2-8
Future Cross Section Properties .....	2-8
Future Road Crossings .....	2-8
Future Inline Weir Structures .....	2-8
Future Flow Data .....	2-9
Future Results .....	2-9
<b>Flood Regulation Compliance</b> .....	<b>2-11</b>
Compensatory Storage .....	2-11
No-Net-Rise .....	2-11
Minimum Flood Corridor .....	2-13
<b>Post Construction Stormwater Management</b> .....	<b>2-14</b>
Water Quality Control Volume .....	2-14
Channel Stabilization .....	2-16
<b>Clean Water Act Section 404 Permitting Guidance</b> .....	<b>2-16</b>

**Tables**

1.1. Lincoln 24-hour Rainfall Depths by Flood Frequency Events (inches)..... 1-2  
1.2. Curve Number Values by Landuse and Hydrologic Soil Group (Antecedent Moisture Condition II) ..... 1-4  
1.3. HEC-HMS Results – Existing Conditions Model ..... 1-6  
1.4. Road Crossing Structures ..... 1-8  
1.5. HEC-RAS Water Surface Elevations ..... 1-9  
  
2.1. Detention Reservoir Outlet Structures ..... 2-3  
2.2. HEC-HMS Results – Future Conditions Model..... 2-6  
2.3. Preliminary Concrete Box Culvert Sizes..... 2-9  
2.4. Compensatory Storage Compliance..... 2-11  
2.5. Culvert Sizing Analysis Results (Preliminary)..... 2-12  
2.6. Minimum Flood Corridor Analysis Results ..... 2-14

**Figures**

ES.1. Coalition Properties..... ES-1  
ES.2. Existing Floodprone Area Delineation..... ES-3  
  
1.1. Upper Wagon Train Watershed ..... 1-1  
1.2. Subbasin Delineation ..... 1-3  
1.3. Existing Land Use and Soil Types ..... 1-5  
1.4. Existing River System and Cross Sections ..... 1-8  
1.5. Existing Floodprone Area ..... 1-9  
  
2.1. Rokeby Coalition Parcels and Conceptual Level Design Plans ..... 2-1  
2.2. Existing and Future Subbasin Delineation Comparison ..... 2-2  
2.3. Future Land Use ..... 2-4  
2.4. Future Detention Basins ..... 2-5  
2.5. Detention Basin Schematic..... 2-5  
2.6. Future River System, Cross Sections, Culverts, and Inline Weirs ..... 2-7  
2.7. Future Floodprone Area and Minimum Flood Corridor..... 2-10  
2.8. Location 1 Minimum Flood Corridor Cross Section ..... 2-13  
2.9. Location 2 Minimum Flood Corridor Cross Section ..... 2-14  
2.10. WQCV and Channel Stabilization Stormwater BMPs..... 2-15

**APPENDIX A – Hydrologic Data Inputs and Results**

**Tables**

A1.1. Existing Subbasin Input Data Summary ..... A-1  
A1.2. Existing Reach Input Data Summary ..... A-1  
A1.3. Existing Reach Input Data – Eight Point Cross Sections ..... A-2  
A1.4. Existing Reservoir Input Data Summary ..... A-2  
A1.5. Existing HEC-HMS Curve Number Tables (acres) ..... A-3  
A1.6. Existing HEC-HMS Time of Concentration Tables..... A-17  
A1.7. Existing HEC-HMS Results ..... A-21  
  
A2.1. Future Subbasin Input Data Summary ..... A-22  
A2.2. Future Reach Input Data Summary ..... A-22  
A2.3. Future Reach Input Data – Eight Point Cross Sections (Identical to Existing Conditions) ..... A-23  
A2.4. Future Reservoir Input Data Summary..... A-23  
A2.5. Future HEC-HMS Curve Number Tables (acres)..... A-24  
A2.6. Future HEC-HMS Time of Concentration Tables..... A-38  
A2.7. Future HEC-HMS Results..... A-42  
  
A3.1. Water Quality Control Volume by Parcel..... A-43

**Figures**

A1.1. Regression Analysis..... A-44  
A1.2. Existing HEC-HMS Schematic ..... A-45  
A1.3. Existing HEC-HMS Land Use and Soil Type ..... A-46

A2.1. Future Water Quality Control Volumes for Rokeby Coalition Parcels .....A-47  
 A2.2. Future HEC-HMS Schematic .....A-48  
 A2.3. Future HEC-HMS Land Use and Soil Type.....A-49

**APPENDIX B – Hydraulic Data Inputs and Results**

**Tables**

B1.1. Existing Flow Data .....B-1  
 B1.2. Existing Road Crossing Input Data Summary.....B-1  
 B1.3. Existing HEC-RAS Cross Section Inputs .....B-2  
 B1.4. Existing HEC-RAS Results – Road Crossings.....B-8  
 B1.5. Existing HEC-RAS Results – Water Surface Elevations.....B-9  
  
 B2.1. Future Peak Flow Analysis Flow Data .....B-12  
 B2.2. Future Peak Flow Analysis Road Crossing and Hydraulic Structure Input Data Summary.....B-12  
 B2.3. Future Peak Flow Analysis HEC-RAS Cross Section Inputs.....B-14  
 B2.4. Future Peak Flow Analysis HEC-RAS Results – Road Crossings.....B-20  
 B2.5. Future Peak Flow Analysis HEC-RAS Results – Water Surface Elevations.....B-21  
 B2.6. Future Peak Flow Analysis HEC-RAS Results – Net Rise.....B-24  
  
 B3.1. Future Culvert Sizing Analysis Flow Data .....B-27  
 B3.2. Future Culvert Sizing Analysis Road Crossing and Hydraulic Structure Input Data Summary .....B-28  
 B3.3. Future Culvert Sizing Analysis HEC-RAS Cross Section Inputs.....B-30  
 B3.4. Future Culvert Sizing Analysis HEC-RAS Results – Road Crossings .....B-36  
 B3.5. Future Culvert Sizing Analysis HEC-RAS Results – Water Surface Elevations .....B-37  
 B3.6. Future Culvert Sizing Analysis HEC-RAS Results – Net Rise .....B-40

**Figures**

B1.1. Existing HEC-RAS River System, Cross Sections, and Road Crossing Locations .....B-43  
 B1.2. Existing HEC-RAS 100yr and 500yr Floodprone Areas, and FEMA Zone A Effective Floodplain .....B-44  
  
 B2.1. Future HEC-RAS River System, Cross Sections, Road Crossing and Hydraulic Structure Locations .....B-45  
 B2.2. Future HEC-RAS 100yr and 500yr Floodprone Areas (Peak Flow Analysis), and Minimum Flood Corridors .....B-46  
 B2.3. Future Peak Flow Analysis Net-Rise (Future Flow Rates, Future Inline Weirs, and Existing Culverts) .....B-47

**APPENDIX C – Hydraulic Inventory**

Culvert C1 ..... C-1  
 Culvert C2 ..... C-2  
 Culvert C3 ..... C-3  
 Culvert C4 ..... C-4  
 Culvert C5 ..... C-5  
 Culvert C6 ..... C-6  
 Culvert C7 ..... C-7  
 Culvert C8 ..... C-8  
 Culvert C10 ..... C-9  
 Culvert C11 ..... C-10  
 Culvert C12 ..... C-11  
 Culvert C13 ..... C-12  
 Culvert C14 ..... C-13  
 Culvert C15 ..... C-14  
 Culvert C16 ..... C-15  
 Culvert C17 ..... C-16  
 Culvert C20 ..... C-17  
 Culvert C21 ..... C-18  
  
 Pond P1 ..... C-19  
 Pond P3 ..... C-20  
 Pond P4 ..... C-21

Pond P5 .....	C-22
Pond P6 .....	C-23
Pond P7 .....	C-24
Pond P8 .....	C-25

**APPENDIX D – Check-RAS Output**

**APPENDIX E – Electronic File Index**