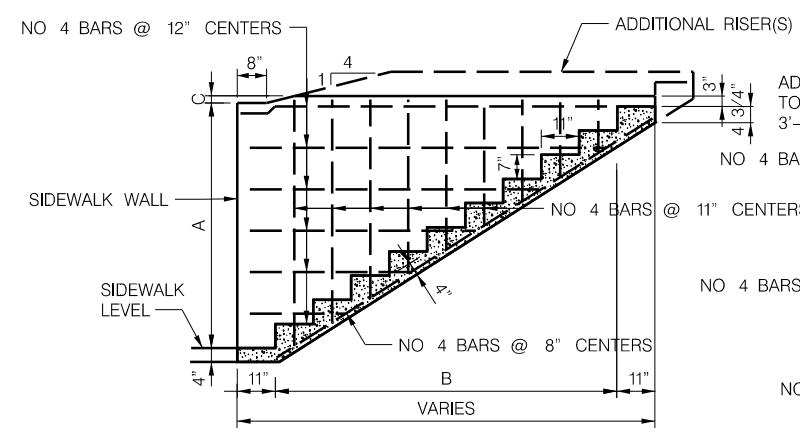
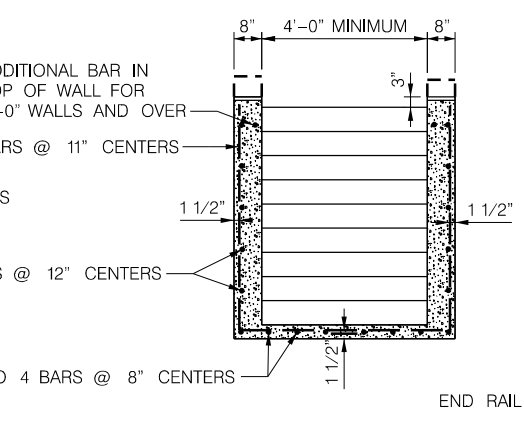


PROJ: LPS\_Standards.dwg  
 PEN: \\ables\pen\_bw\_PENTABLE.tbl  
 USER: slecaw  
 DATE: 2/17/2017  
 DGN: ...STANDARD 2017.LSPs\lsp615.dgn

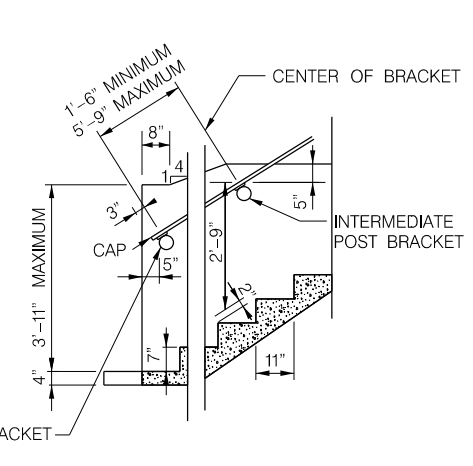
WALL DIMENSIONS			NUMBER OF RISERS	RETAINING WALL STEPS FOR 5 FOOT WALK								RETAINING WALL STEPS FOR 5 FOOT WALK									
				CONCRETE CUBIC YARDS	STEEL POUNDS	PER 1 ADDITIONAL RISER	PER 2 ADDITIONAL RISERS	PER 3 ADDITIONAL RISERS	PER 4 ADDITIONAL RISERS	CONCRETE CUBIC YARDS	STEEL POUNDS	PER 1 ADDITIONAL RISER	PER 2 ADDITIONAL RISERS	PER 3 ADDITIONAL RISERS	PER 4 ADDITIONAL RISERS						
A	B	C		CONCRETE CUBIC YARDS	STEEL POUNDS	CONCRETE CUBIC YARDS	STEEL POUNDS	CONCRETE CUBIC YARDS	STEEL POUNDS	CONCRETE CUBIC YARDS	STEEL POUNDS	CONCRETE CUBIC YARDS	STEEL POUNDS	CONCRETE CUBIC YARDS	STEEL POUNDS	CONCRETE CUBIC YARDS	STEEL POUNDS	CONCRETE CUBIC YARDS	STEEL POUNDS	CONCRETE CUBIC YARDS	STEEL POUNDS
2'-0"	1'-10"	0"	3	0.69	50	0.17	17	0.30	29			0.72	54	0.19	19	0.34	33				
3'-0"	3'-8"	2"	5	1.14	90	0.18	22	0.33	38	0.45	52		1.26	100	0.21	24	0.39	43	0.54	59	
3'-11"	5'-6"	4"	7	1.73	130	0.21	25	0.40	44	0.55	61	0.67	1.90	144	0.24	28	0.45	49	0.63	68	0.77



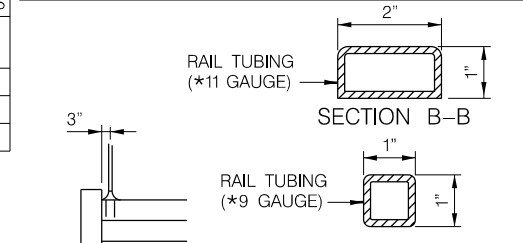
**LONGITUDINAL SECTION OF STEPS FOR WALLS 2'-0" TO 6'-0"**



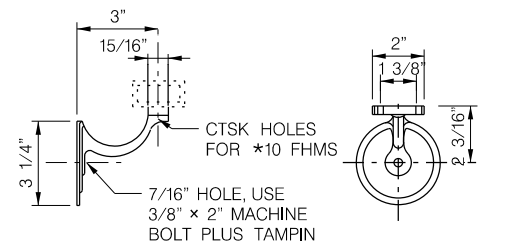
**TYPICAL CROSS-SECTION OF STEPS FOR 3'-11" WALL**



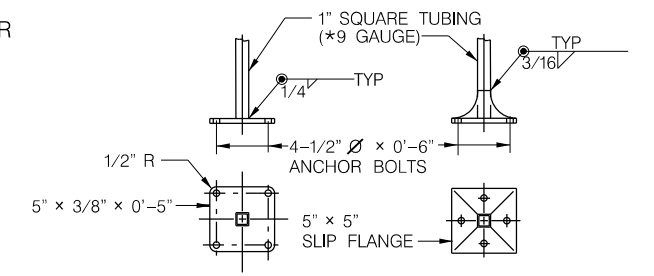
**HANDRAIL DETAILS FOR RETAINING WALL STEPS FOR 3'-0" WALLS AND UNDER**



**PART END VIEW SECTION C-C STRUCTURAL TUBING**



**MALLEABLE IRON HANDRAIL BRACKET DETAIL**



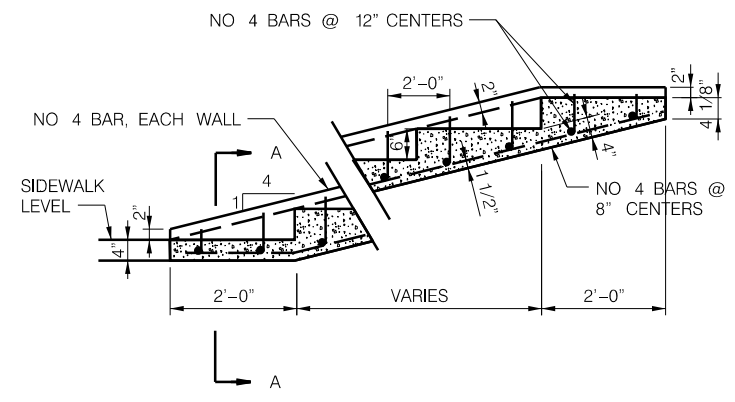
**TYPICAL POST DETAIL ALTERNATE I ALTERNATE II**

SIDEWALK WIDTH	MINIMUM 2 RISERS		PER ADDITIONAL RISER	
	CONCRETE CUBIC YARDS	STEEL POUNDS	CONCRETE CUBIC YARDS	STEEL POUNDS
3'-0"	0.52	55	0.203	19.29
4'-0"	0.63	62	0.246	22.02

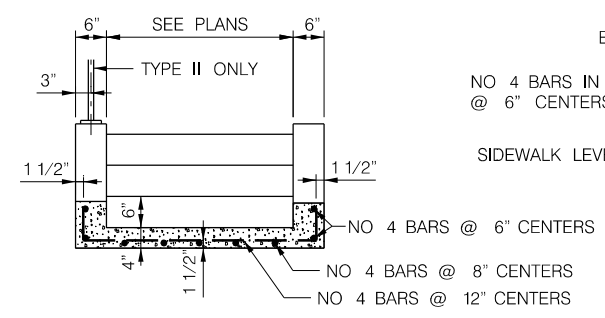
NOTES:  
 MINIMUM DEPTH OF EMBEDMENT FOR REINFORCING STEEL SHALL BE 1 1/2".  
 ALL REINFORCING STEEL SHALL BE EPOXY COATED.  
 CHAMFER ALL EXPOSED EDGES OF CONCRETE 3/4".  
 QUANTITIES SHOWN ARE COMPUTED USING DIMENSIONS SHOWN ON THIS PLAN. THE DIMENSION MAY BE VARIED TO CONFORM TO FIELD CONDITIONS

SIDEWALK WIDTH	TERRACE STEPS TYPE II			
	MINIMUM 2 RISERS	PER ADDITIONAL RISER	CONCRETE CUBIC YARDS	STEEL POUNDS
3'-0"	0.28	27	0.114	9.17
4'-0"	0.34	34	0.139	11.28

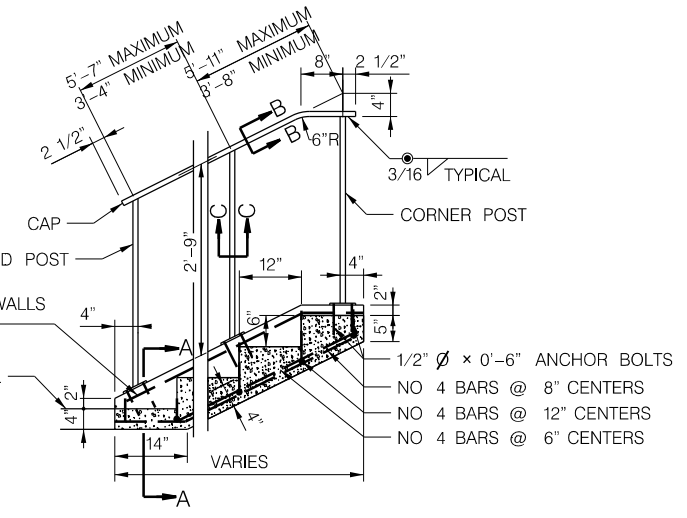
NOTES FOR HANDRAILS:  
 HANDRAIL SHALL BE INSTALLED ON RETAINING WALL STEPS AND ALL TYPE II STEPS WITH 4 RISERS OR MORE.  
 RAILING SHALL BE INSTALLED ON TYPE I TERRACE STEPS.  
 PLACE END RAIL BRACKET AT LOCATION OF INTERMEDIATE RAIL BRACKET WHEN SPACING OF BRACKET IS LESS THAN 1'-6".  
 DIMENSIONS MARKED THUS \* ARE FOR 7" AND 11" TREADS.  
 ALL HANDRAILS TO BE STRUCTURAL TUBING A.S.T.M. A-36, GAGE AS SHOWN.  
 STEPS SHALL BE FIELD MEASURED FOR FABRICATION OF HANDRAIL.  
 HANDRAIL SHALL BE GIVEN 3 COATS OF PAINT.  
 ALL CONCRETE SHALL BE L3500.



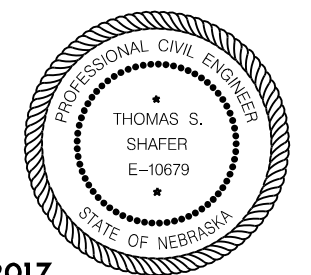
**TYPICAL SECTION OF TERRACE STEPS TYPE I**



**TYPICAL SECTION A-A OF TYPE I & II STEPS**



**TYPICAL SECTION & HANDRAIL DETAILS OF TERRACE STEPS TYPE II**



This document was originally issued and sealed by Thomas S. Shafer, E-10679, on 2-17-2017. This media should not be considered a certified document.