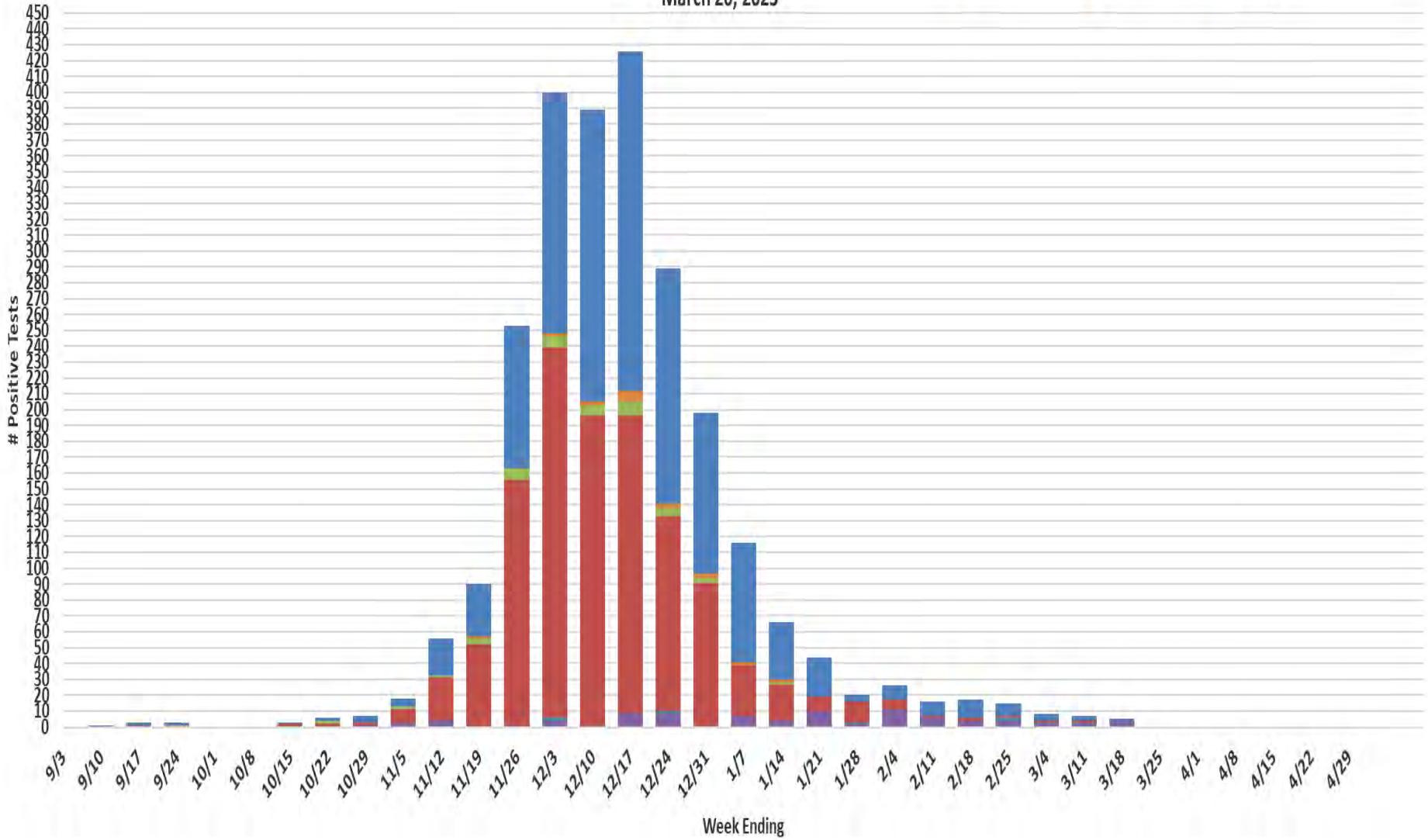
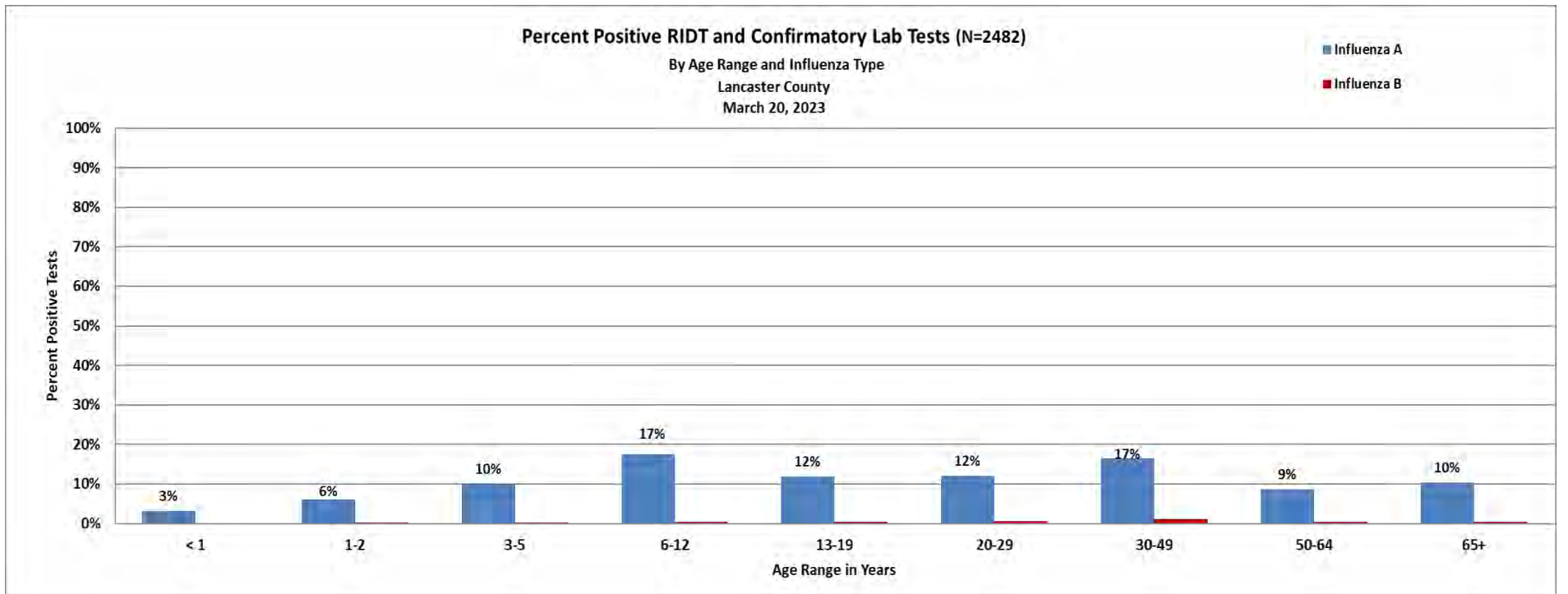
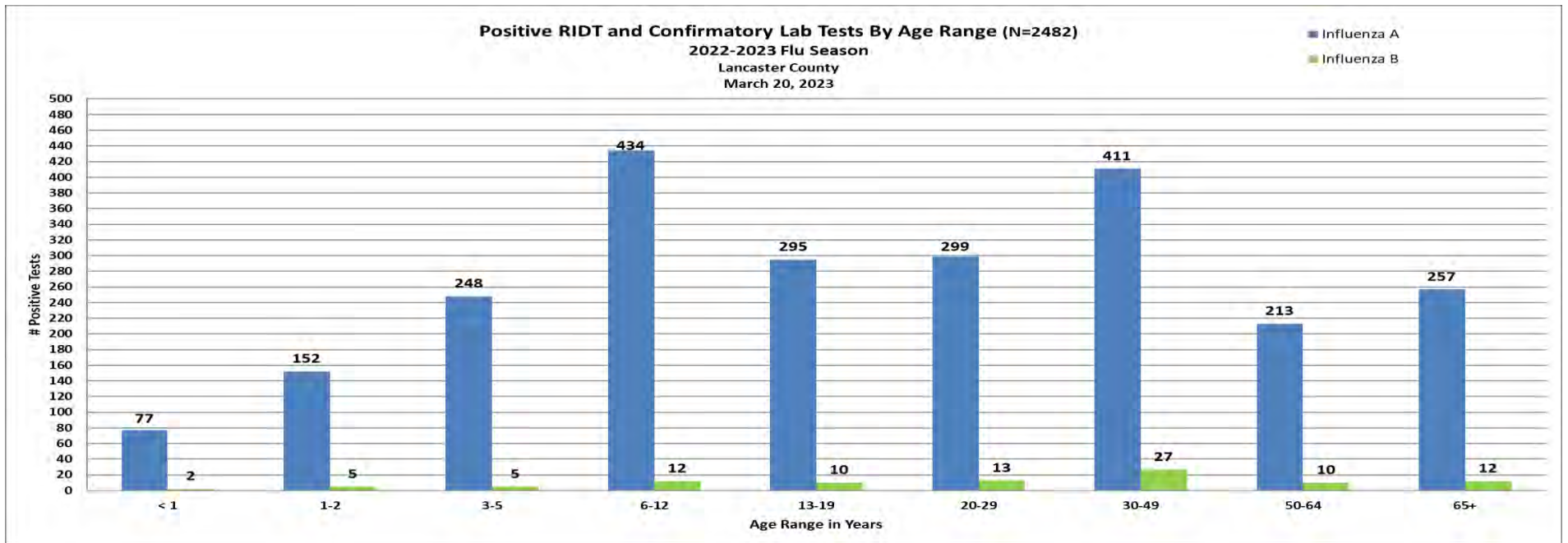


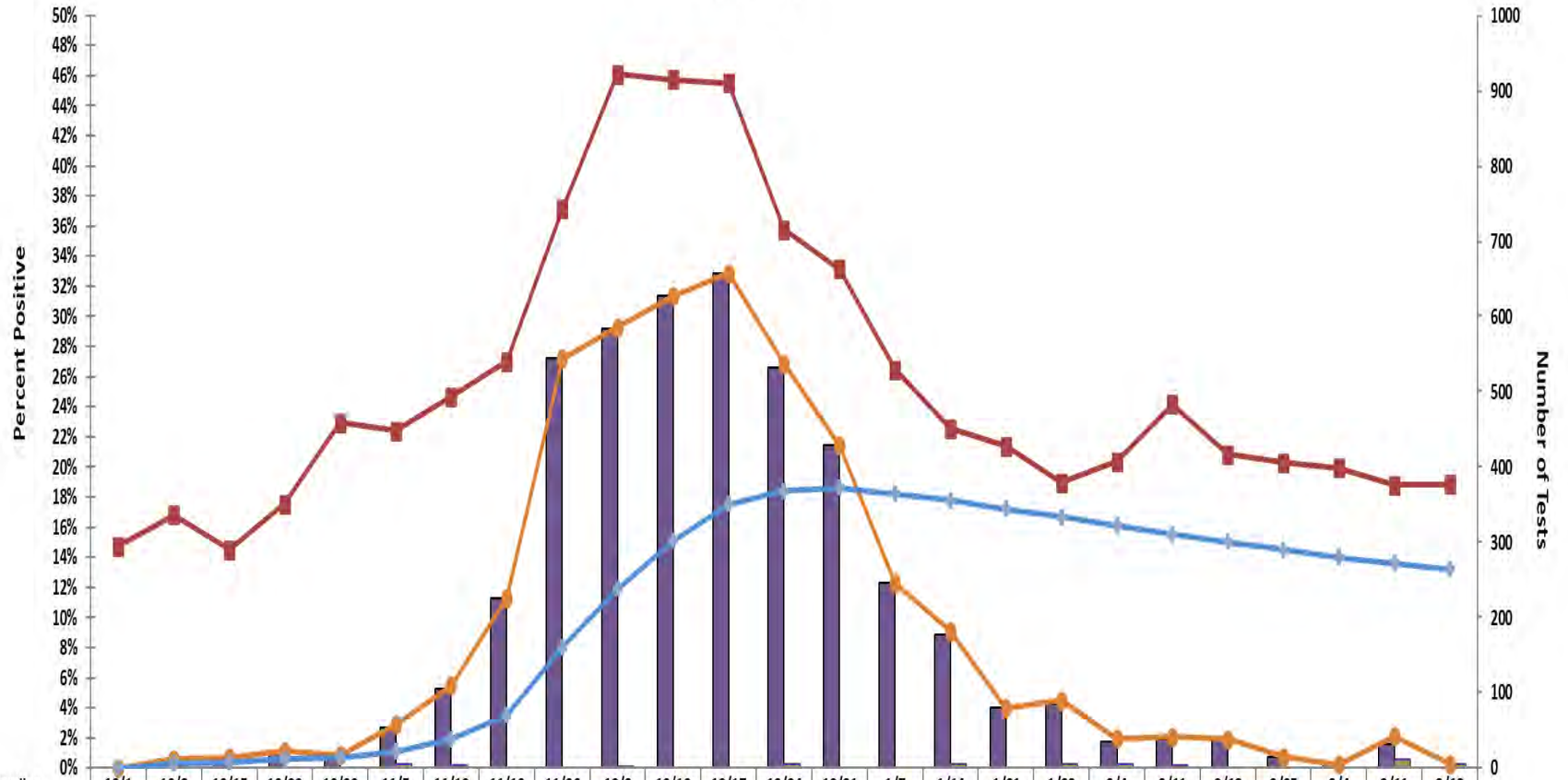
Positive RIDT and Confirmatory Lab Tests (N=2482)
 By Week Specimen Collected
 Lancaster County
 March 20, 2023

- B (RIDT)
- B (Confirmed)
- A (not subtyped)
- H3
- H1
- A (RIDT)



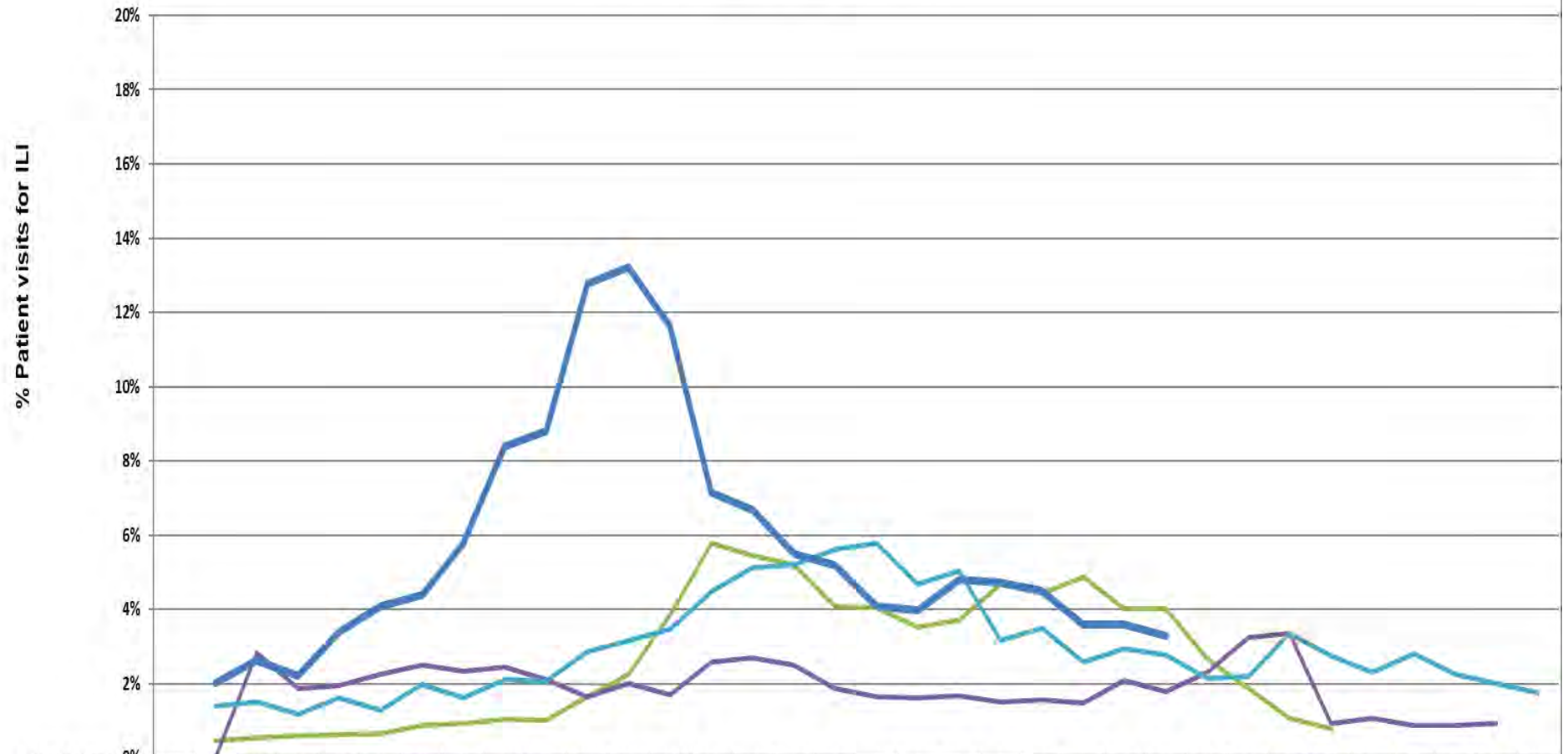


2022-2023 Influenza Season
Weekly Clinical Laboratory Influenza Tests Performed
and Percent Positive by Type
Lancaster County

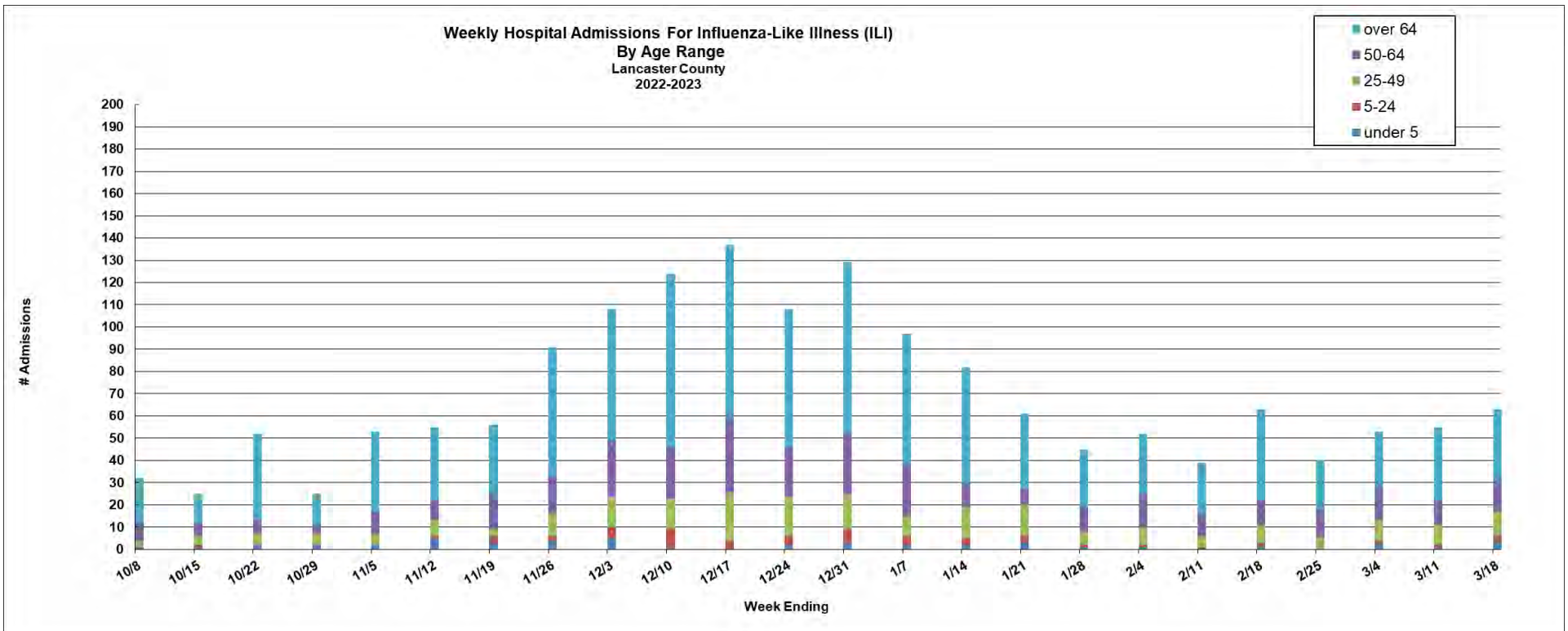
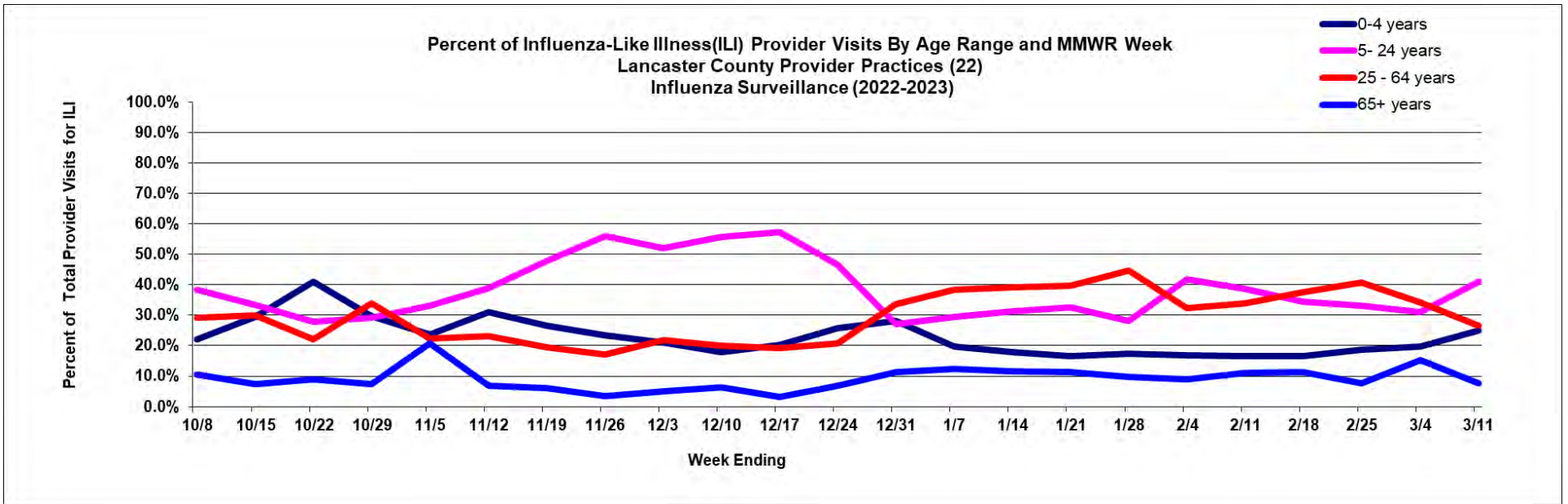


Week ending	10/1	10/8	10/15	10/22	10/29	11/5	11/12	11/19	11/26	12/3	12/10	12/17	12/24	12/31	1/7	1/14	1/21	1/28	2/4	2/11	2/18	2/25	3/4	3/11	3/18
% Pos Type A	0.0	0.6%	0.7%	1.1%	0.9%	2.7%	5.3%	11.3%	27.2%	29.2%	31.4%	32.9%	26.6%	21.4%	12.3%	8.9%	4.0%	4.2%	1.7%	1.9%	1.9%	0.7%	0.3%	1.6%	0.0%
% Pos Type B	0.0	0	0	0	0	0.2%	0.2%	0.0%	0.0%	0.1%	0.0%	0.0%	0.3%	0.0%	0.0%	0.2%	0.0%	0.3%	0.2%	0.2%	0.0%	0.0%	0.0%	0.5%	0.3%
Weekly Positivity	0	0.6%	0.7%	1.1%	0.9%	2.9%	5.5%	11.3%	27.2%	29.3%	31.4%	32.9%	26.9%	21.4%	12.3%	9.1%	4.0%	4.5%	2.0%	2.1%	1.9%	0.7%	0.3%	2.1%	0.3%
Cumulative Positivity	0.0%	0.3%	0.4%	0.6%	0.7%	1.1%	1.9%	3.5%	8.0%	11.9%	15.1%	17.5%	18.4%	18.6%	18.2%	17.8%	17.2%	16.7%	16.1%	15.5%	15.0%	14.5%	14.0%	13.6%	13.2%
# Test Performed	295	336	290	351	459	448	493	540	743	922	915	910	715	663	529	451	428	379	407	483	417	406	399	376	377

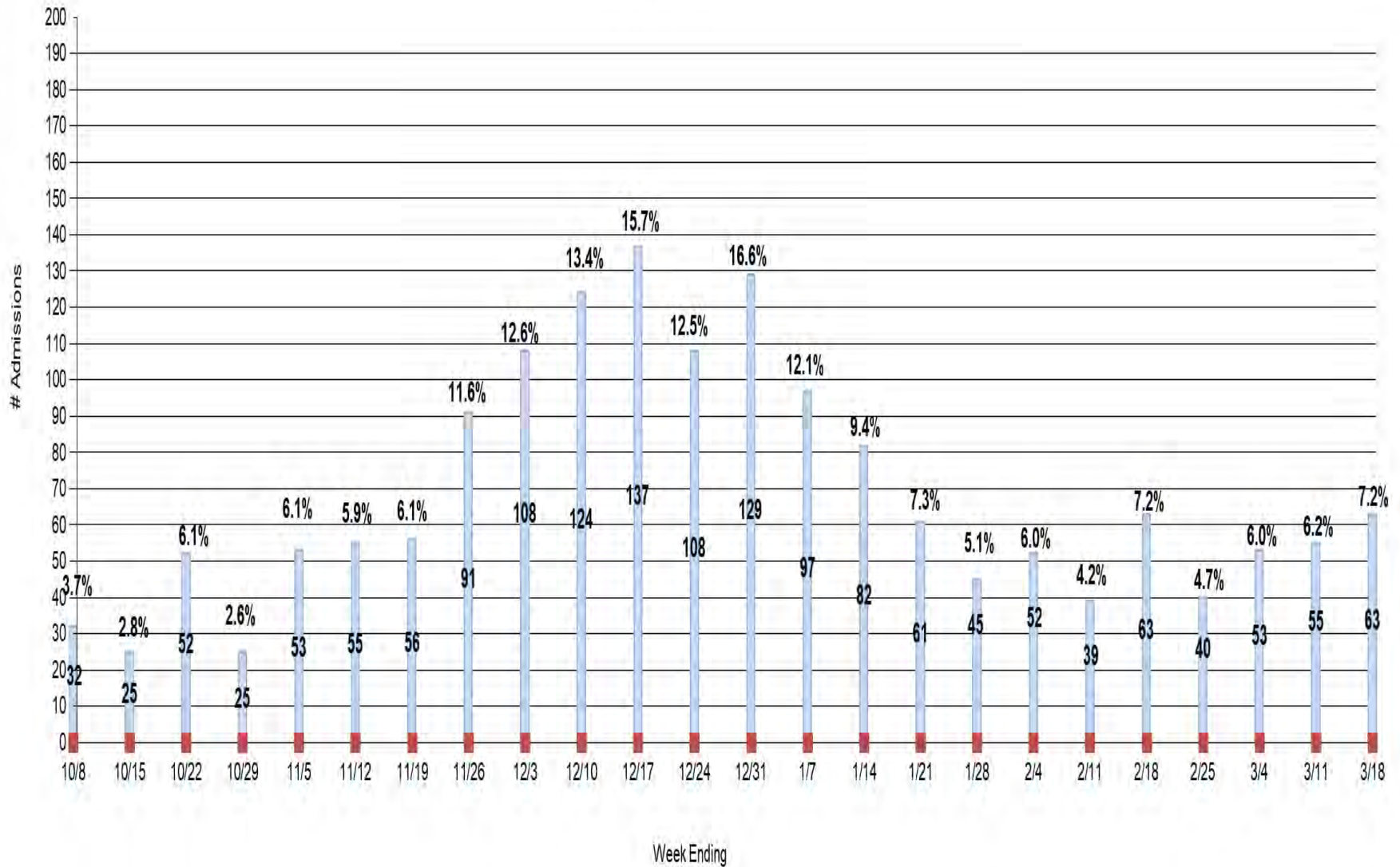
Percent of Provider Visits for Influenza-Like Illness (ILI)
 Week Ending March 11, 2023 (MMWR Week 10)
 Lancaster County



MMWR WEEK	39	40	41	42	43	44	45	46	47	48	49	50	51	52	53	1	2	3	4	5	6	7	8	9	10	11	12	13	14	15	16	17	18	19
2019-20		0.5%	0.5%	0.6%	0.6%	0.6%	0.9%	0.9%	1.0%	1.0%	1.6%	2.3%	3.9%	5.8%	5.5%	5.2%	4.1%	4.0%	3.5%	3.7%	4.7%	4.4%	4.9%	4.0%	4.0%	2.7%	1.9%	1.1%	0.8%					
2020-21		0.0%	2.8%	1.9%	1.9%	2.2%	2.5%	2.3%	2.5%	2.1%	1.7%	2.0%	1.7%	2.6%	2.7%	2.5%	1.9%	1.6%	1.6%	1.7%	1.5%	1.6%	1.5%	2.1%	1.8%	2.3%	3.3%	3.4%	0.9%	1.1%	0.9%	0.9%	0.9%	
2021-22		1.4%	1.5%	1.2%	1.6%	1.3%	2.0%	1.6%	2.1%	2.1%	2.8%	3.2%	3.5%	4.5%	5.1%	5.2%	5.6%	5.8%	4.7%	5.1%	3.2%	3.5%	2.6%	2.9%	2.8%	2.1%	2.2%	3.4%	2.8%	2.3%	2.8%	2.2%	2.0%	1.8%
2022-23		2.0%	2.6%	2.2%	3.4%	4.1%	4.4%	5.8%	8.4%	8.8%	12.8%	13.2%	11.6%	7.2%	6.7%	5.5%	5.2%	4.1%	4.0%	4.8%	4.7%	4.5%	3.6%	3.6%	3.3%									
2021-22 Week ending		10/8	10/15	10/22	10/29	11/5	11/12	11/19	11/26	12/3	12/10	12/17	12/24	12/31		1/7	1/14	1/21	1/28	2/4	2/11	2/18	2/25	3/4	3/11	3/18	3/25	4/1	4/8	4/15	4/22	4/29	5/6	5/13



Number and Percent of Weekly Hospital Admissions For Flu-Like Illness (ILI)
 Lancaster County
 2022-2023



School Flu-Like Illness by Week Reported
Lancaster County Rural & Parochial Schools Surveillance
Week Ending March 11, 2023 (MMWR Week 10)

