



# StarTran Temporary Transfer Center Relocation

Must move riders from current construction to increase safety  
away from Gold's Building Redevelopment Project

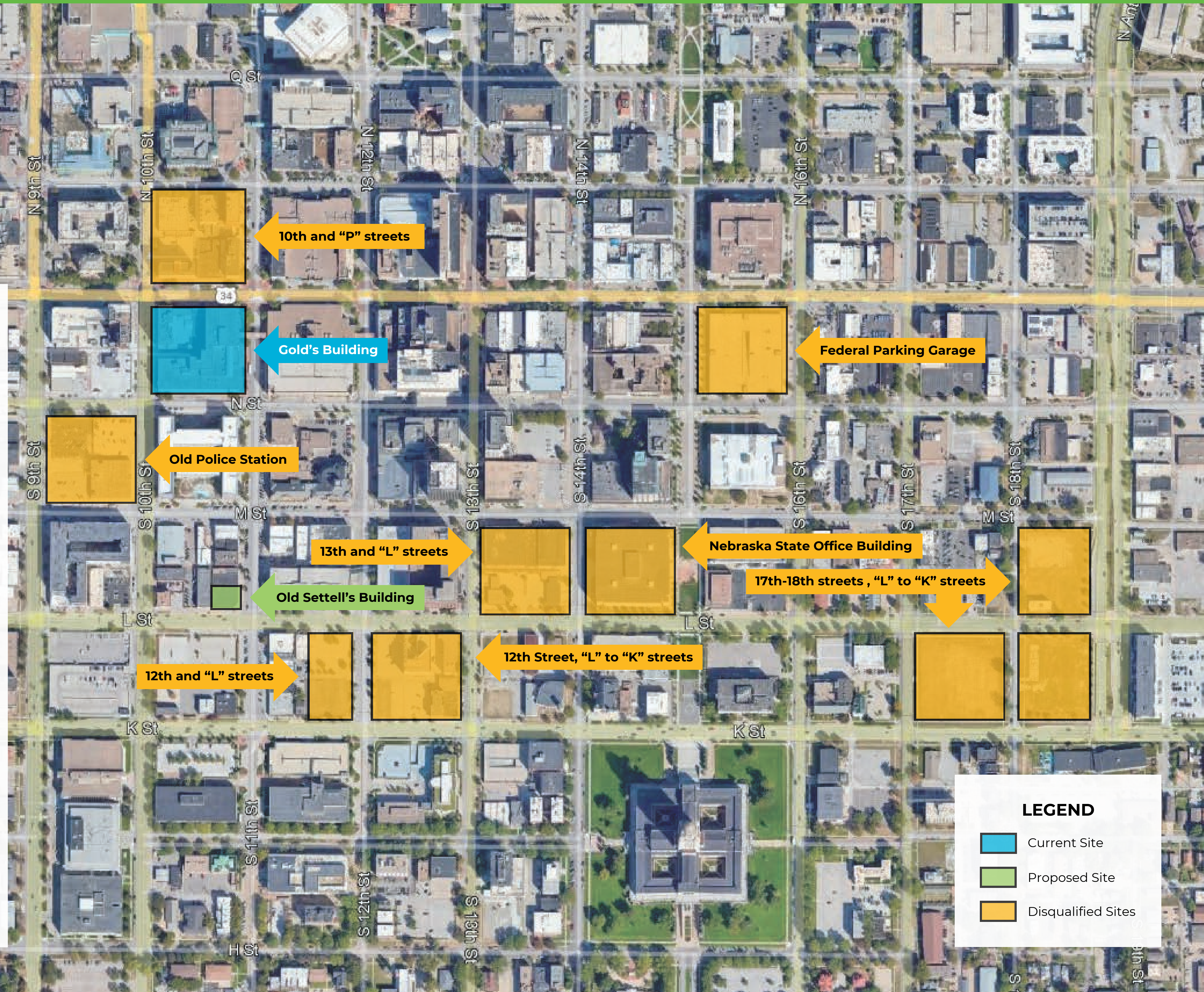




# StarTran Temporary Transfer Center - Potential Sites

## Site Criteria:

1. Must be in downtown area
2. Room for six bus stop locations
3. ADA accessible
4. Covered waiting areas
5. Capacity for daily riders
6. Nearby existing downtown transfer center
7. Street network can handle increased capacity
8. Are there significant impacts to service?



**LEGEND**

- Current Site
- Proposed Site
- Disqualified Sites



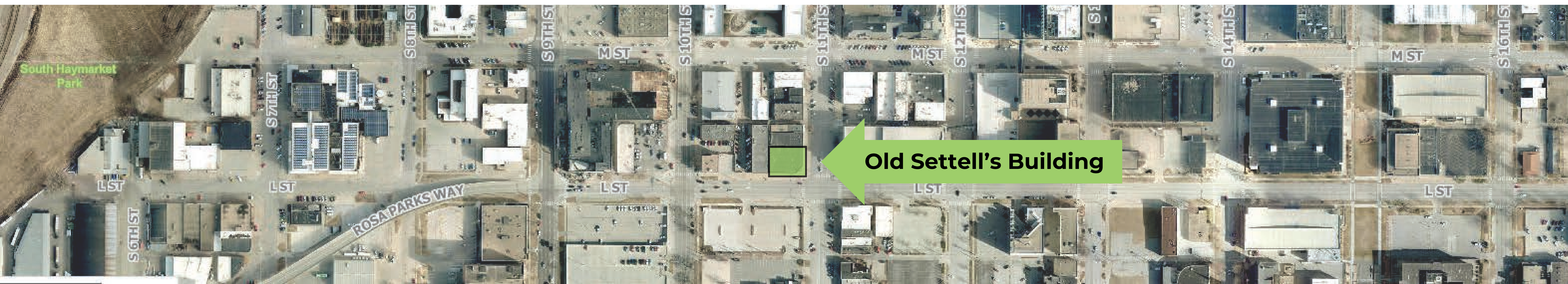
# StarTran Temporary Transfer Center - Identified Site

The former Settell's Printing building at 11th and "L" streets



## 11th and "L" streets:

- Less than two blocks from StarTran's current transfer stops.
- Offers space for bus riders and pedestrians.
- Has adequate room to hold six bus stops.
- Existing "L" Street stop already experiences frequent bus service serving nine routes.
- Offers a large covered overhang for riders at the Settell's building: no additional bus shelters needed.
- Will relocate 11 on-street parking stalls to the Carriage Park Parking Garage across the street that offers covered parking.
- Unable to use inside of Settell's building due to needed improvements.





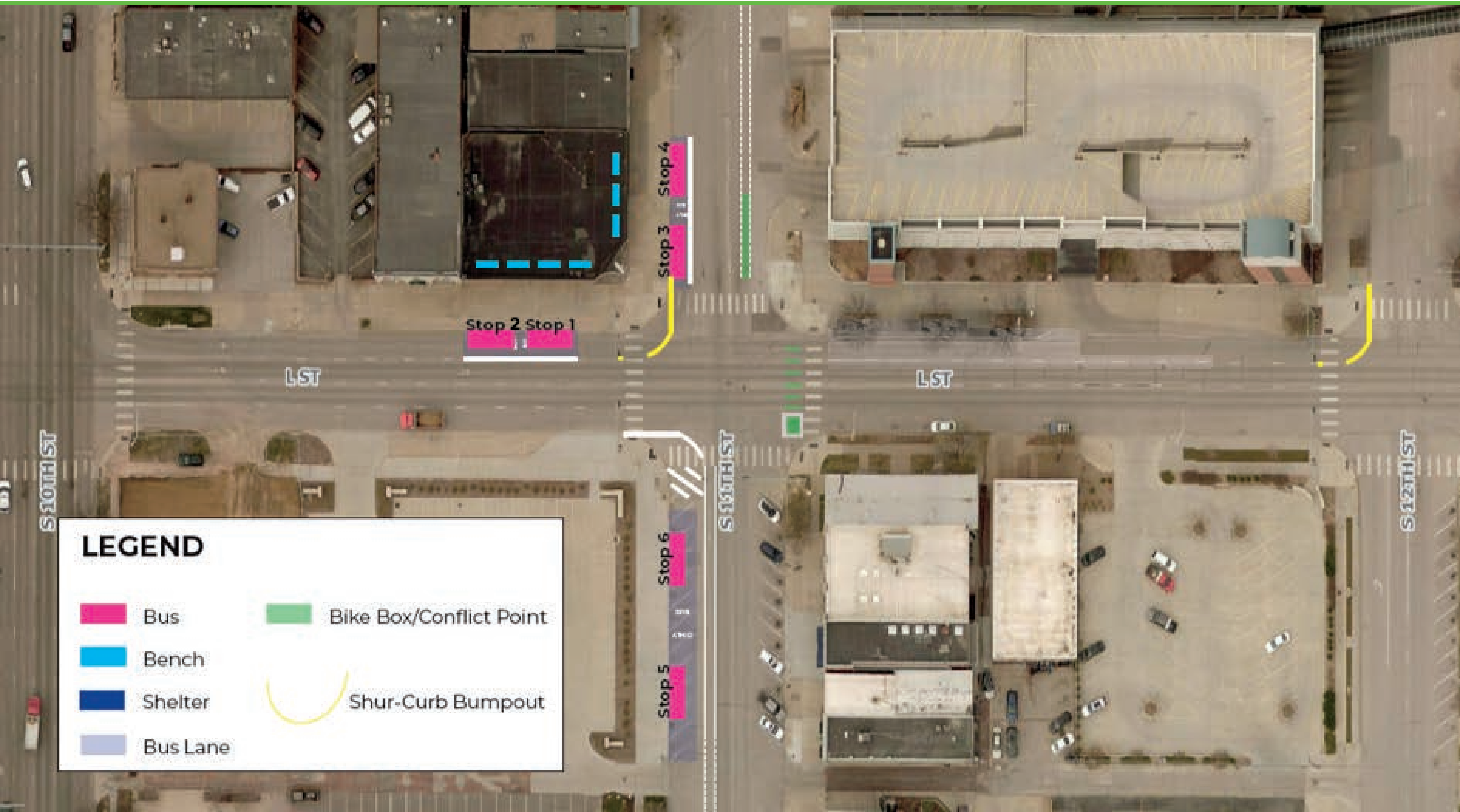
# Proposed Relocation of On-Street Parking Stalls







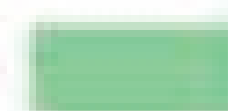



# StarTran Temporary Transfer Center - Preferred Layout

All stops located west of 11th Street



## LEGEND

-  Bus
-  Bench
-  Shelter
-  Bus Lane
-  Bike Box/Conflict Point
-  Shur-Curb Bumpout



# Multi-Modal Transportation Center Design

Preferred Site





# Multi-Modal Transportation Center Design

Preferred Site





# Multi-Modal Transportation Center Timeline

