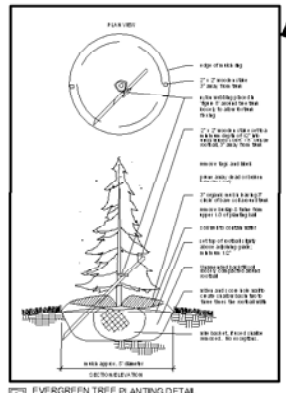
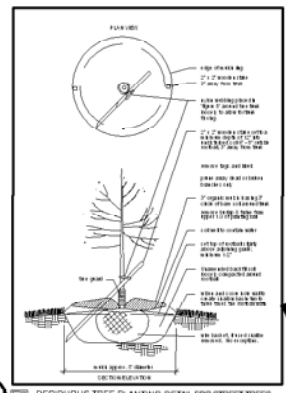
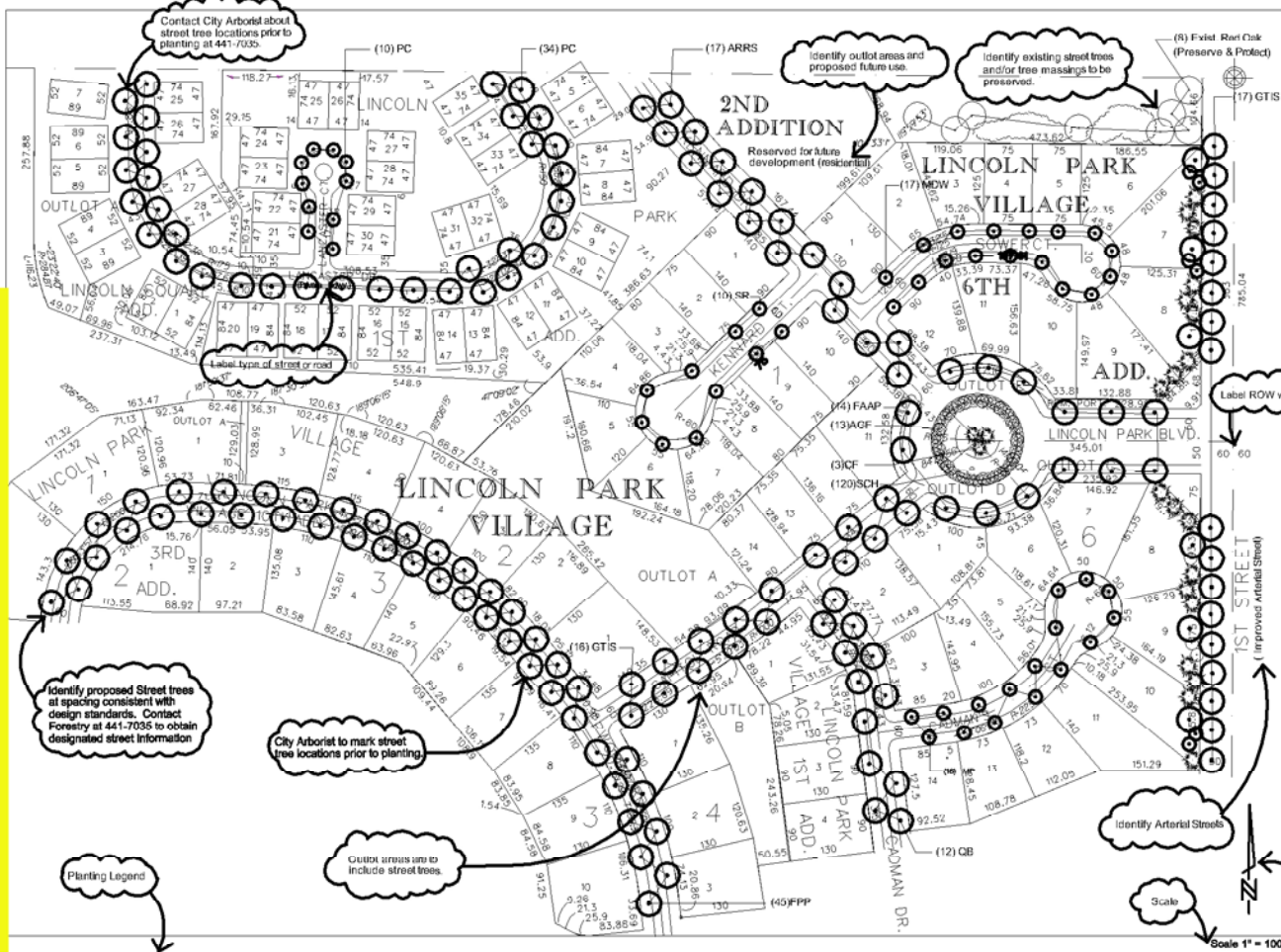


Sample Street Tree Plan



Current Tree Planting Details

LPR
design group
2740 W. Street
Lincoln, NE 68502

Design Firm Name & Address

LINCOLN PARK VILLAGE

Project Title

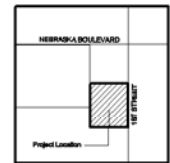
Proposed Landscape Schedule

LOCATION	COMMON NAME	BOTANICAL NAME	SYMBOL	SIZE AT PLANTING	PLANTING METHOD	DESIGN W. HT.	MAJOR STREET	UNIMPROVED ARTERIAL	IMPROVED ARTERIAL	LANDSCAPE SCREEN
1ST STREET	Shademaster Locust	<i>Gleditsia triacanthos inermis</i> 'Shademaster'	GTIS	1 1/2" CAL	B&B	36' 48'		17		
LINCOLN PARK BLVD.	Autumn Purple Ash	<i>Fraxinus americana</i> 'Autumn Purple'	FAAP	1 1/2" CAL	B&B	40' 45'	14			
CAPITOL ROAD	Shademaster Locust	<i>Gleditsia triacanthos inermis</i> 'Shademaster'	GTIS	1 1/2" CAL	B&B	36' 45'	16			
CADMAN COURT	Prairiefire Crabapple	<i>Malus</i> 'Prairiefire'	MP	1 1/2" CAL	B&B	18' 20'	16			
CADMAN DRIVE	Swamp White Oak	<i>Quercus bicolor</i>	QB	1 1/2" CAL	R&R	45' 48'	12			
SOWER COURT	Donald Wyman Crabapple	<i>Malus</i> 'Donald Wyman'	MDW	1 1/2" CAL	B&B	24' 20'	17			
KENARD DRIVE	Red Sunset Maple	<i>Acer rubrum</i> 'Red Sunset'	ARRS	1 1/2" CAL	B&B	36' 45'	17			
KENARD COURT	Japanese Tree Lilac	<i>Syringa reticulata</i>	SR	1 1/2" CAL	B&B	18' 15'	10			
EPWORTH ROAD	Patmore Ash	<i>Fraxinus pennsylvanica</i> 'Patmore'	FPP	1 1/2" CAL	B&B	36' 45'	45			
LANCASTER DRIVE	Autumn Blaze Maple	<i>Acer x rubrum</i> 'Autumn Blaze'	ARAB	1 1/2" CAL	B&B	40' 50'	34			
LANCASTER COURT	Chanticleer Pear	<i>Pyrus</i> 'Chanticleer'	PC	1 1/2" CAL	B&B	18' 40'	10			
LINCOLN PARK BLVD.	Flame Amur Maple (Single Stem)	<i>Acer alternata</i> 'Flame'	AGF	1 1/2" CAL	B&B	20' 20'	13			
LINCOLN PARK BLVD.	White Fir	<i>Conifer</i> 'fir'	CF	5" HT.	B&B	40' 20'	9			
LINCOLN PARK BLVD.	Hancock Coralberry	<i>Symphoricarpos x chenaultii</i> 'Hancock'	SCH	NO. 3 CONT.		2 1/2' E	120			
1ST STREET	Autumn Purple Ash	<i>Fraxinus americana</i> 'Autumn Purple'	FAAP	1 1/2" CAL	B&B	40' 45'				6
1ST STREET	Colorado Green Spruce	<i>Picea pungens</i>	PP	1 1/2" CAL	B&B	20' 40'				13
1ST STREET	Autumn Brilliance Serviceberry	<i>Amelanchier</i> 'Autumn Brilliance'	AAB	1 1/2" CAL	B&B	18' 20'				10

General Notes:

- Pursuant to Chapter 2.35, Design Standards for Street Trees, and Section 12.20 of the Lincoln Municipal Code, street tree locations shall be marked by the City Arborist, or designee prior to planting.
- Utility locations shown are approximate. Contractor shall verify locations and depths to all utilities which exist on or near the project site. Prior to planting, the contractor shall contact Diggers Hotline at 1-800-331-5966 to have utilities marked.
- City ordinance requires that planted trees have a minimum trunk diameter of 1".
- Landscaping shall be installed per Chapter 31 of City of Lincoln Standard Specifications for Municipal Construction.
- Contact the City's Forestry Department at 441-7035 for designated Street Trees as identified by the City's Master Street Tree Plan locations shall be marked by the City Arborist, or designee

Location Map:



Landscape Plan

Name, Date, Revision No., etc.

REVISIONS: 01/12/04
DATE: 01/12/04
DRAWN BY: MEC
CHECKED BY: LJ/SS
PROJECT NO.: LPV Landscape 011204
SHEET NO.: 1/1