

# Project Schedule

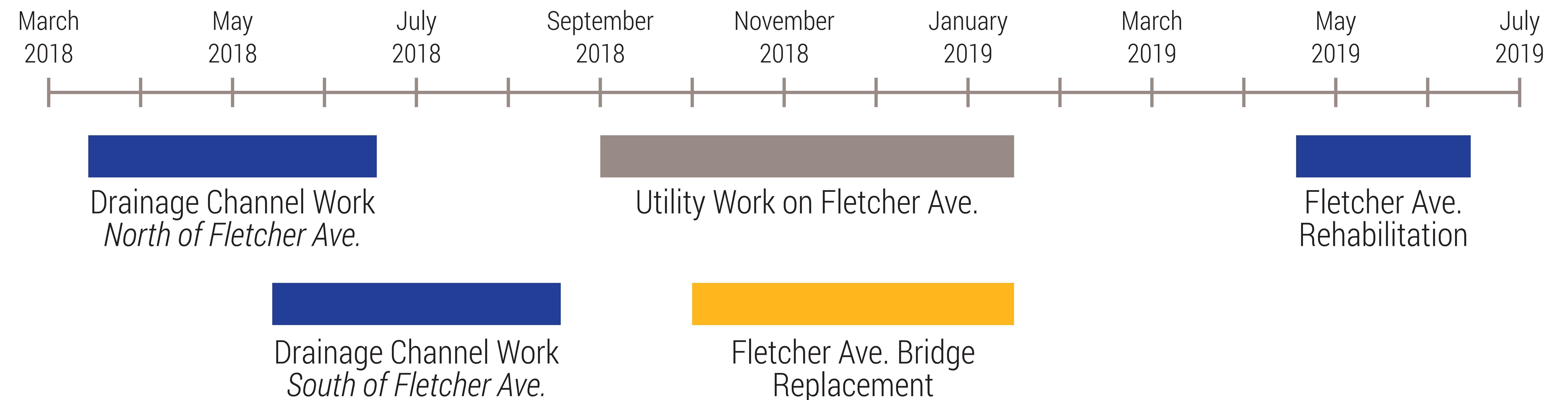
The purpose of this project is to rehabilitate the existing drainage channel to reduce future flood risk and make the channel safer and easier to maintain.

The design of the drainage improvements began in June 2016, and public input was collected to help inform the design process.

Construction of the drainage improvements is scheduled to begin March 2018.

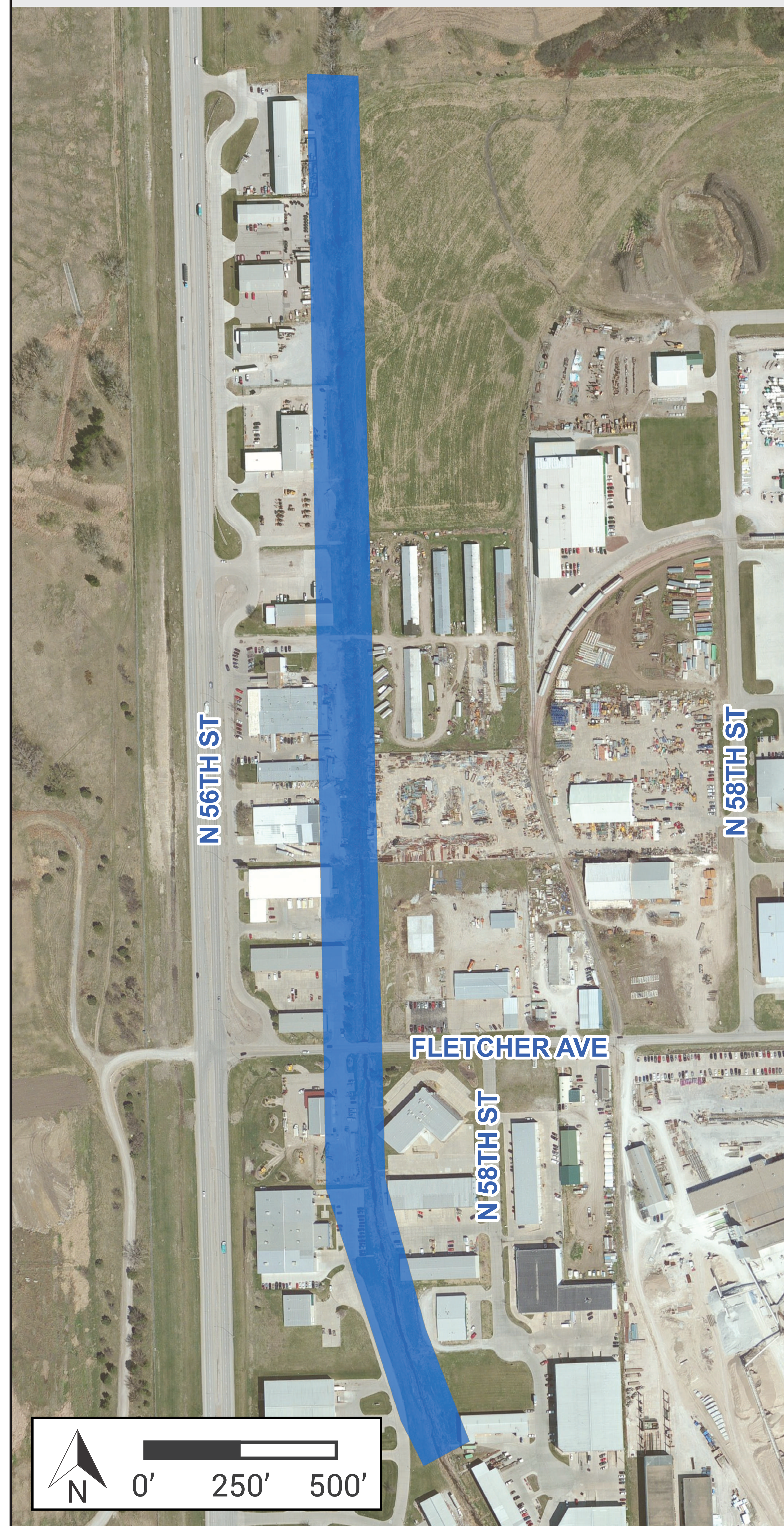
- Access to properties in the project area is a key consideration of the construction plan.

## Anticipated Construction Schedule





## Project Area



# The Need for Improvement

Properties in the 56th & Morton area are at risk of experiencing a flood, even during small rain events.



*Box culvert at Fletcher Ave*



*Flood water encroaching on area businesses*



*Box culvert at Johanna Road*



*Flood water in an area business parking lot*



*Flood water in an area business*

Removing only the existing trees and debris in the channel would simply be a marginal improvement and not provide significant benefit to reduce flood risks.

The inadequate capacity of this drainage channel has been a known issue since before 2011, but a lack of available funding has prevented improvements from being made.



# Community-Informed Design



www.56thMorton.com

Stakeholder engagement and public input helped ensure the final design meets the future needs of project area stakeholders and the community.

This project will widen portions of the channel, replace the box culvert (bridge) at Fletcher Avenue, add in access points for maintenance, and rehabilitate portions to prevent future erosion.

It is expected that the improvements made will lower the water surface elevation in the channel between two to four feet during a heavy rainfall event.

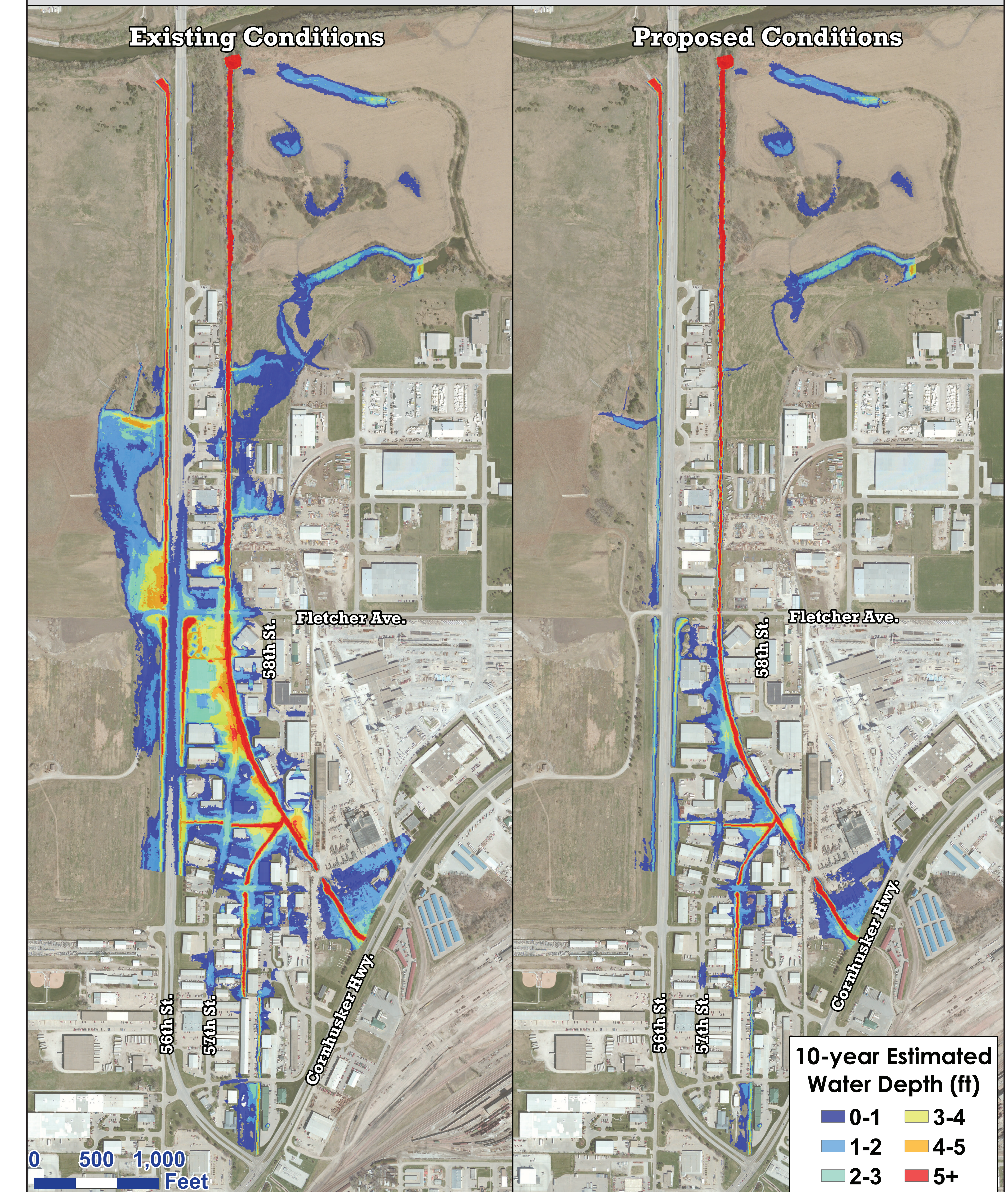
## BENEFITS OF THE PROJECT

*Reduced flood risk for the entire project area*

*Better emergency access to properties during large storm events*

*Channel can be properly maintained by city*

## Flood Inundation Depth for a 10-Year Storm Event

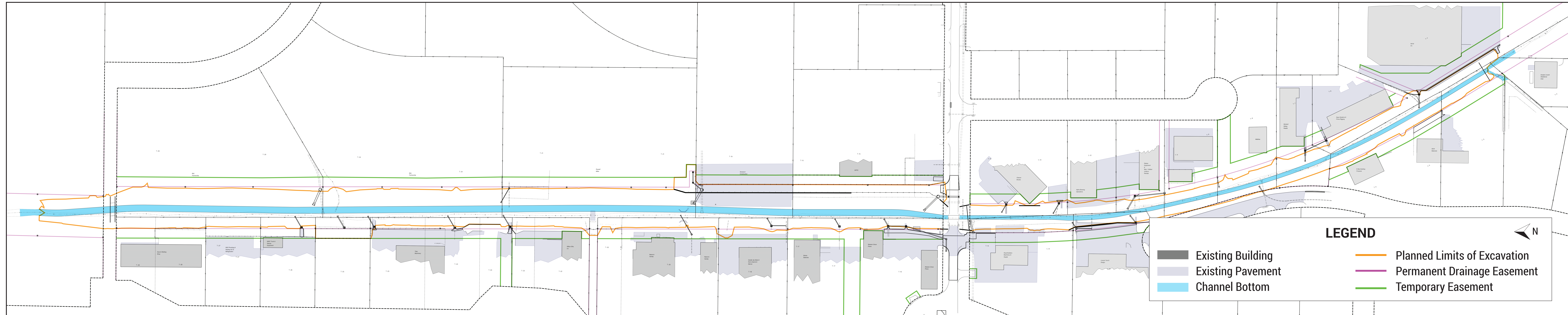




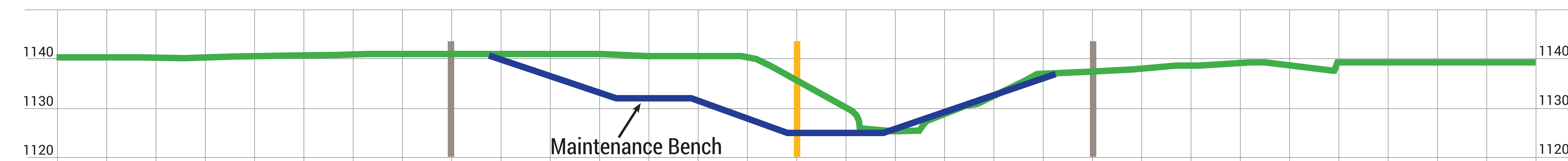
# Community-Informed Design



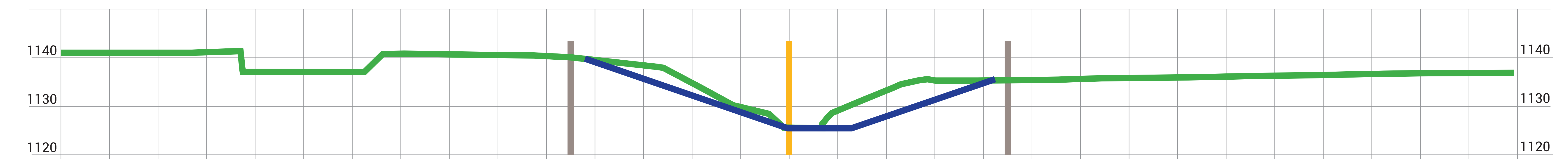
www.56thMorton.com



Channel Cross-Section - North of Fletcher Ave (looking south)



Channel Cross-Section - South of Fletcher Ave (looking south)



## LEGEND

- Drainage Easement Limit
- Drainage Channel Baseline Alignment
- Existing Channel
- Proposed Channel



# Project Schedule

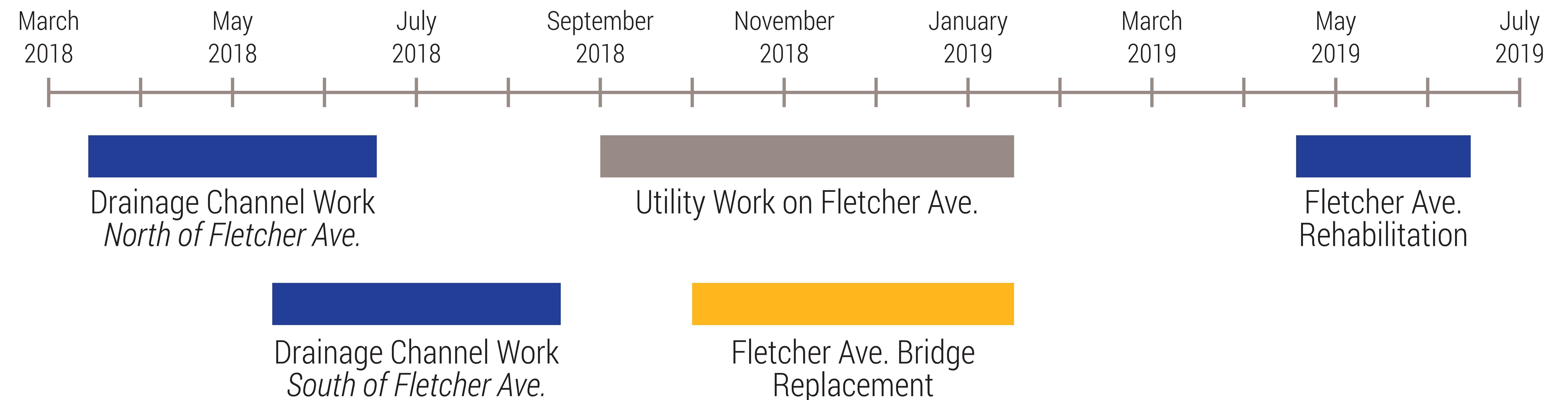
The purpose of this project is to rehabilitate the existing drainage channel to reduce future flood risk and make the channel safer and easier to maintain.

The design of the drainage improvements began in June 2016, and public input was collected to help inform the design process.

Construction of the drainage improvements is scheduled to begin March 2018.

- Access to properties in the project area is a key consideration of the construction plan.

## Anticipated Construction Schedule





# Community-Informed Design



www.56thMorton.com

Stakeholder engagement and public input helped ensure the final design meets the future needs of project area stakeholders and the community.

This project will widen portions of the channel, replace the box culvert (bridge) at Fletcher Avenue, add in access points for maintenance, and rehabilitate portions to prevent future erosion.

It is expected that the improvements made will lower the water surface elevation in the channel between two to four feet during a heavy rainfall event.

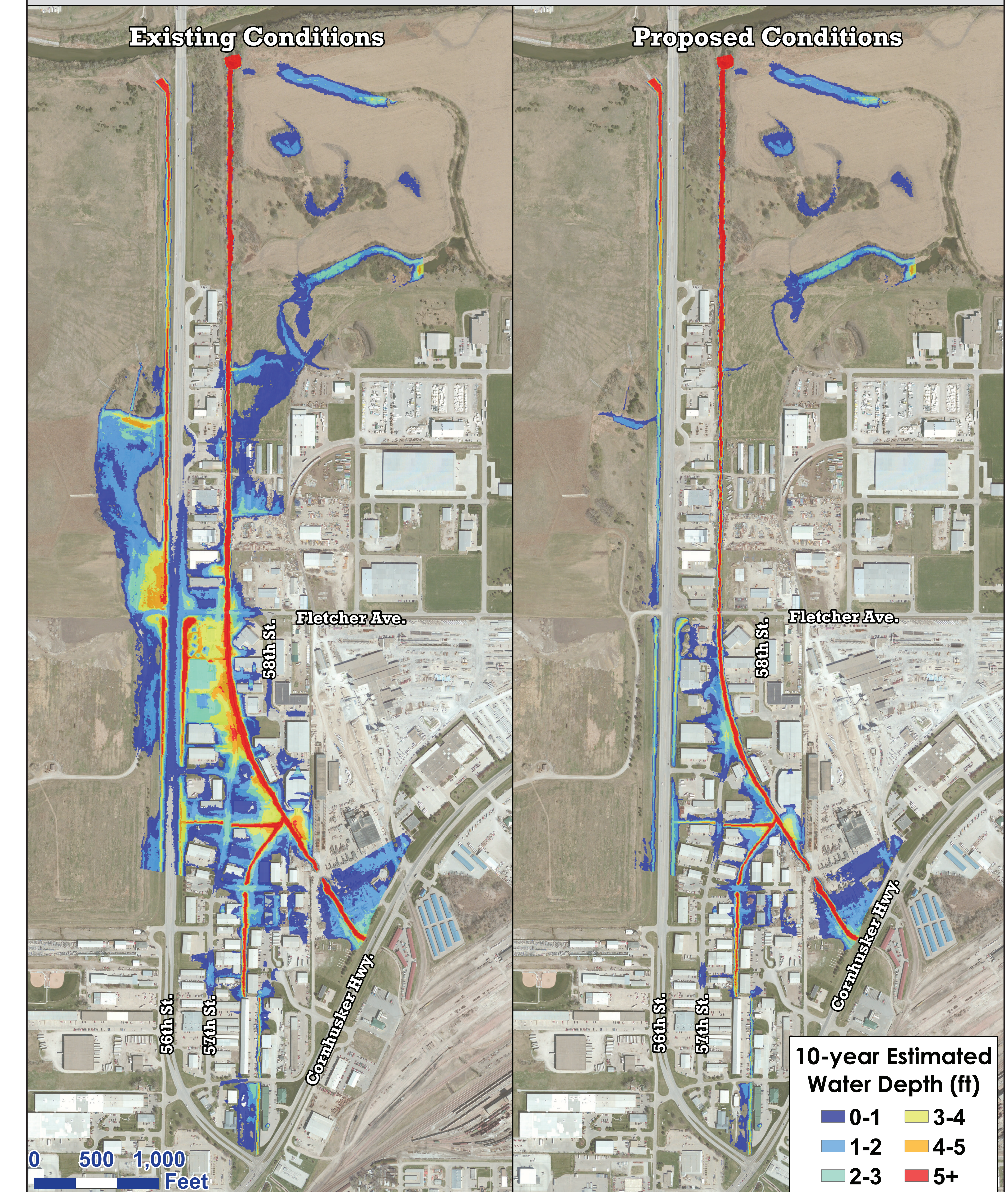
## BENEFITS OF THE PROJECT

*Reduced flood risk for the entire project area*

*Better emergency access to properties during large storm events*

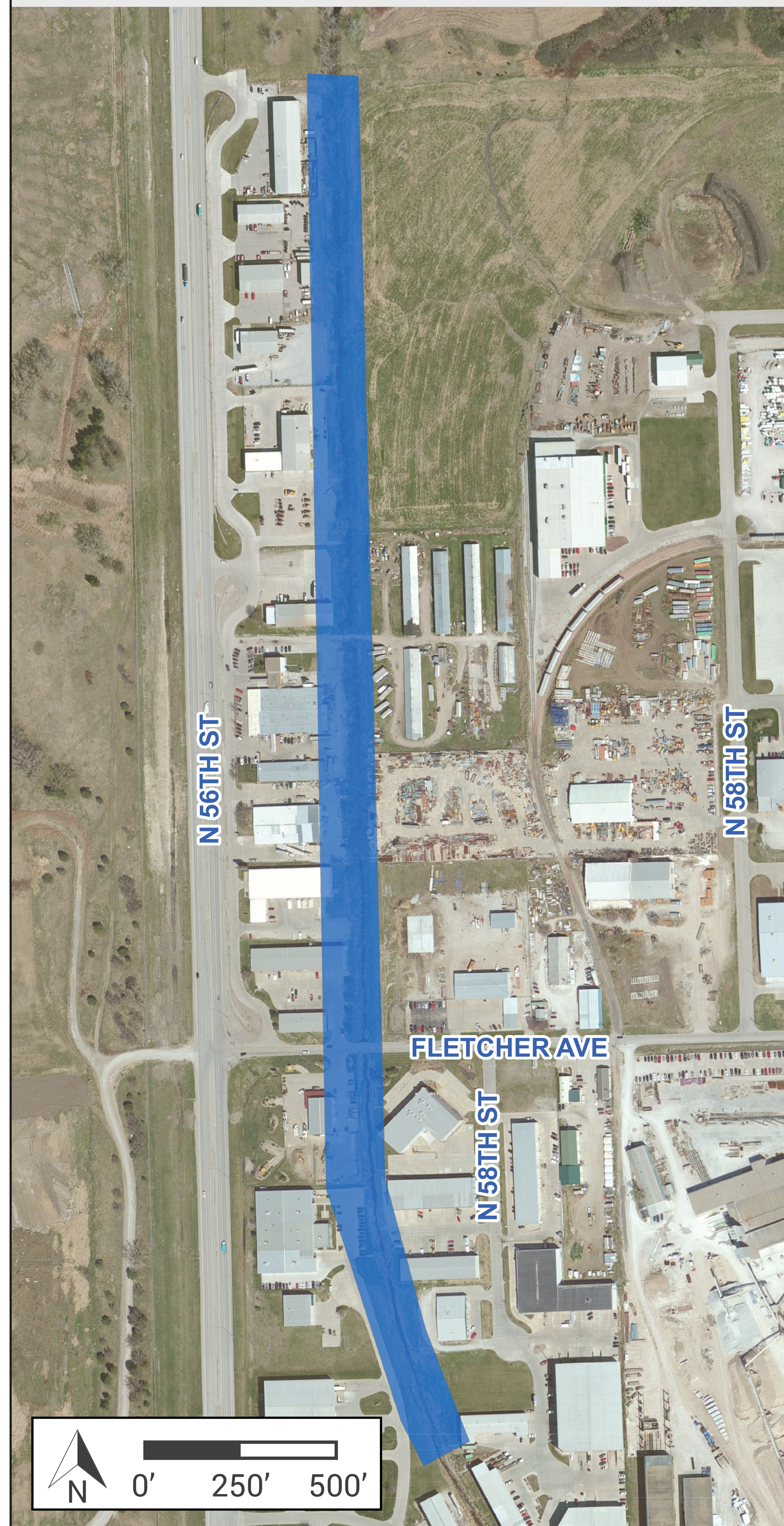
*Channel can be properly maintained by city*

## Flood Inundation Depth for a 10-Year Storm Event





## Project Area



# The Need for Improvement

Properties in the 56th & Morton area are at risk of experiencing a flood, even during small rain events.



*Box culvert at Fletcher Ave*



*Flood water encroaching on area businesses*



*Box culvert at Johanna Road*



*Flood water in an area business parking lot*



*Flood water in an area business*

Removing only the existing trees and debris in the channel would simply be a marginal improvement and not provide significant benefit to reduce flood risks.

The inadequate capacity of this drainage channel has been a known issue since before 2011, but a lack of available funding has prevented improvements from being made.