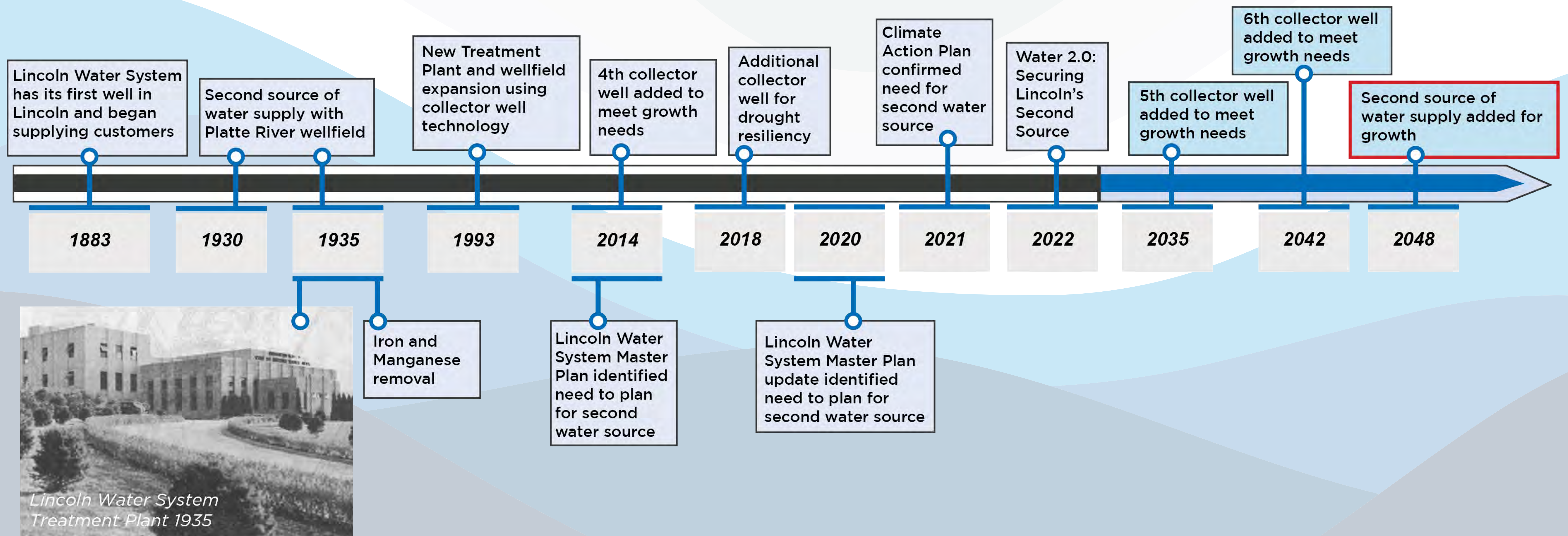
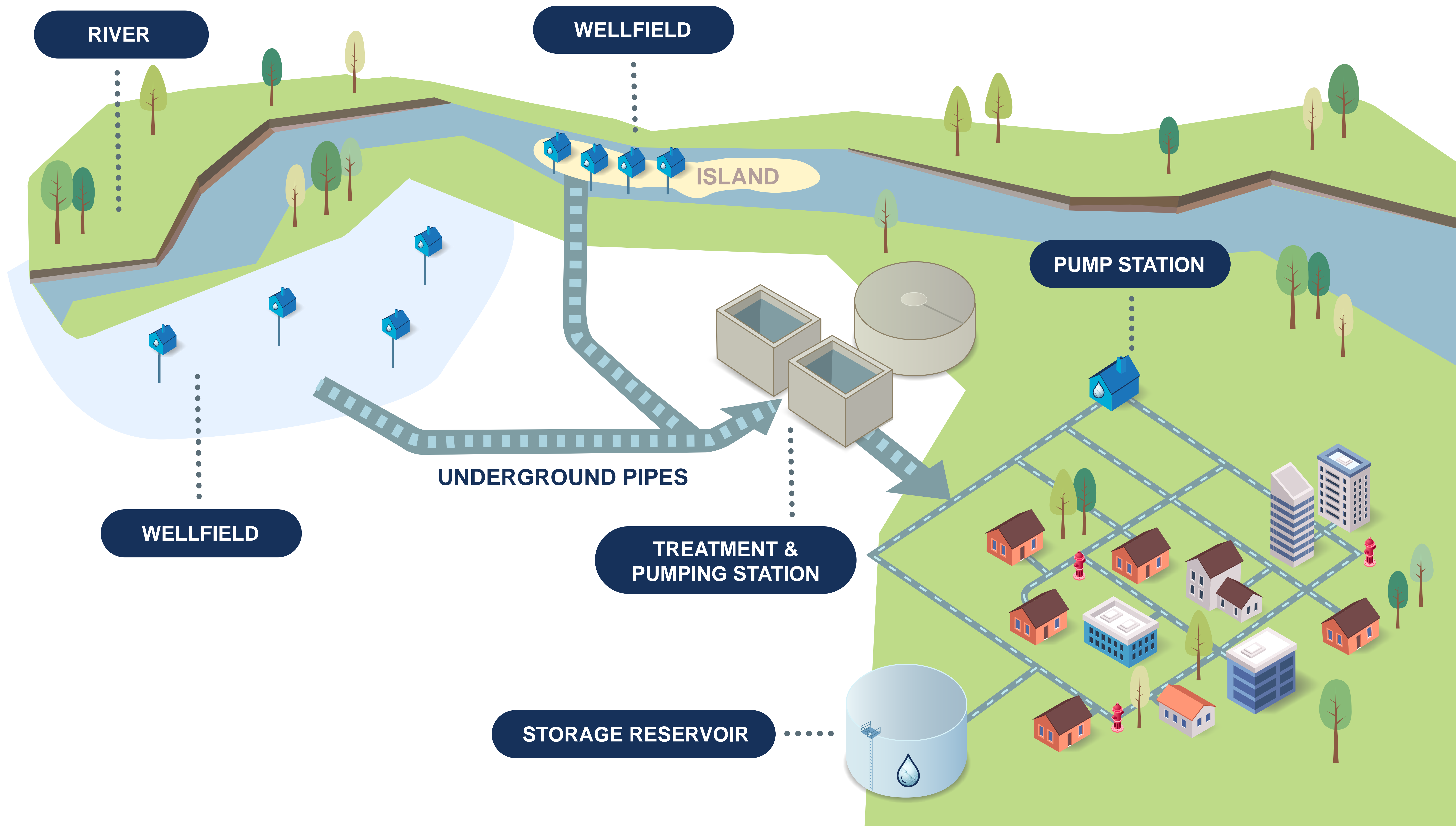


# LINCOLN WATER SUPPLY PLANNING TIMELINE





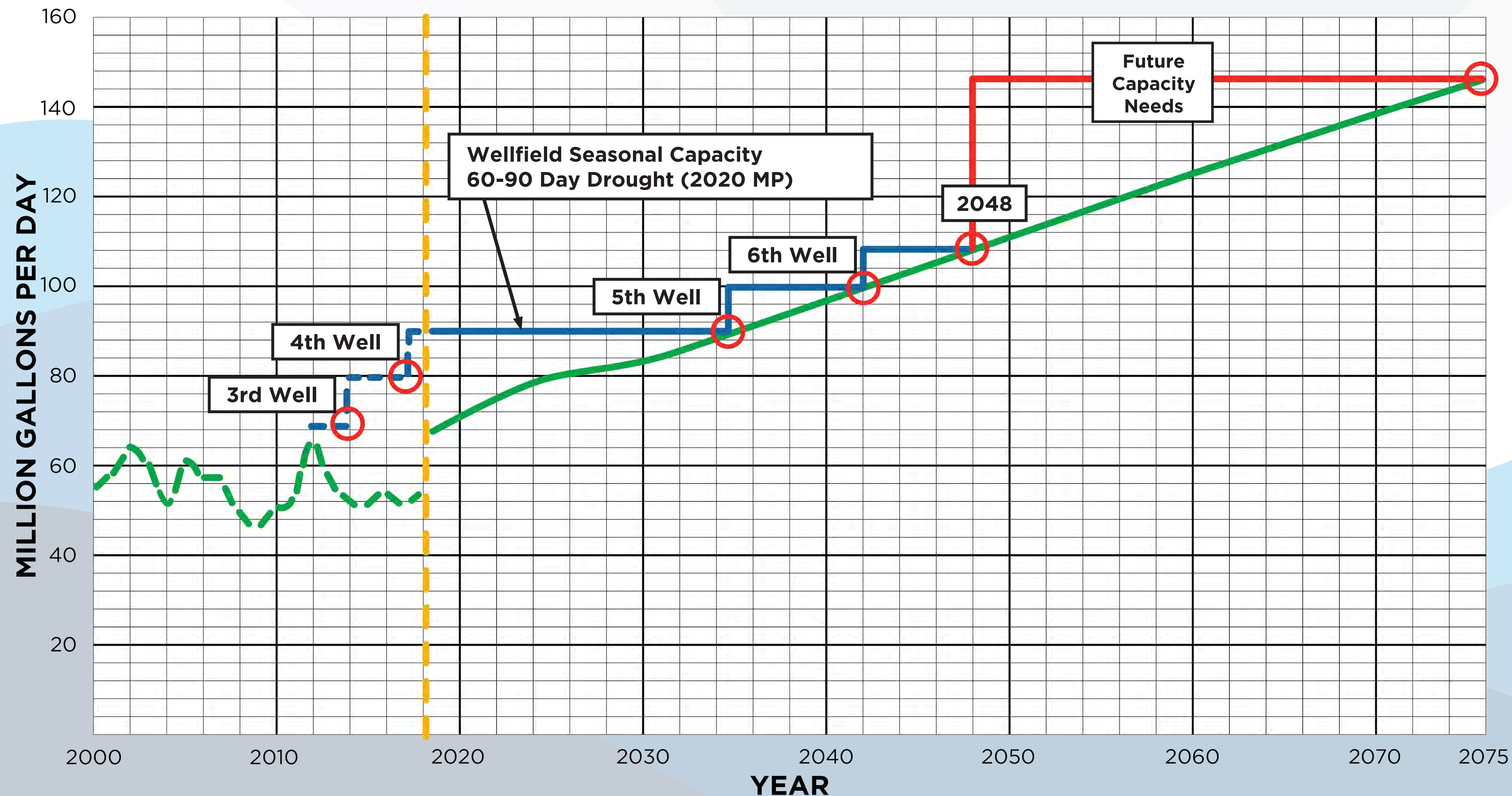
# WATER SUPPLY PROCESS





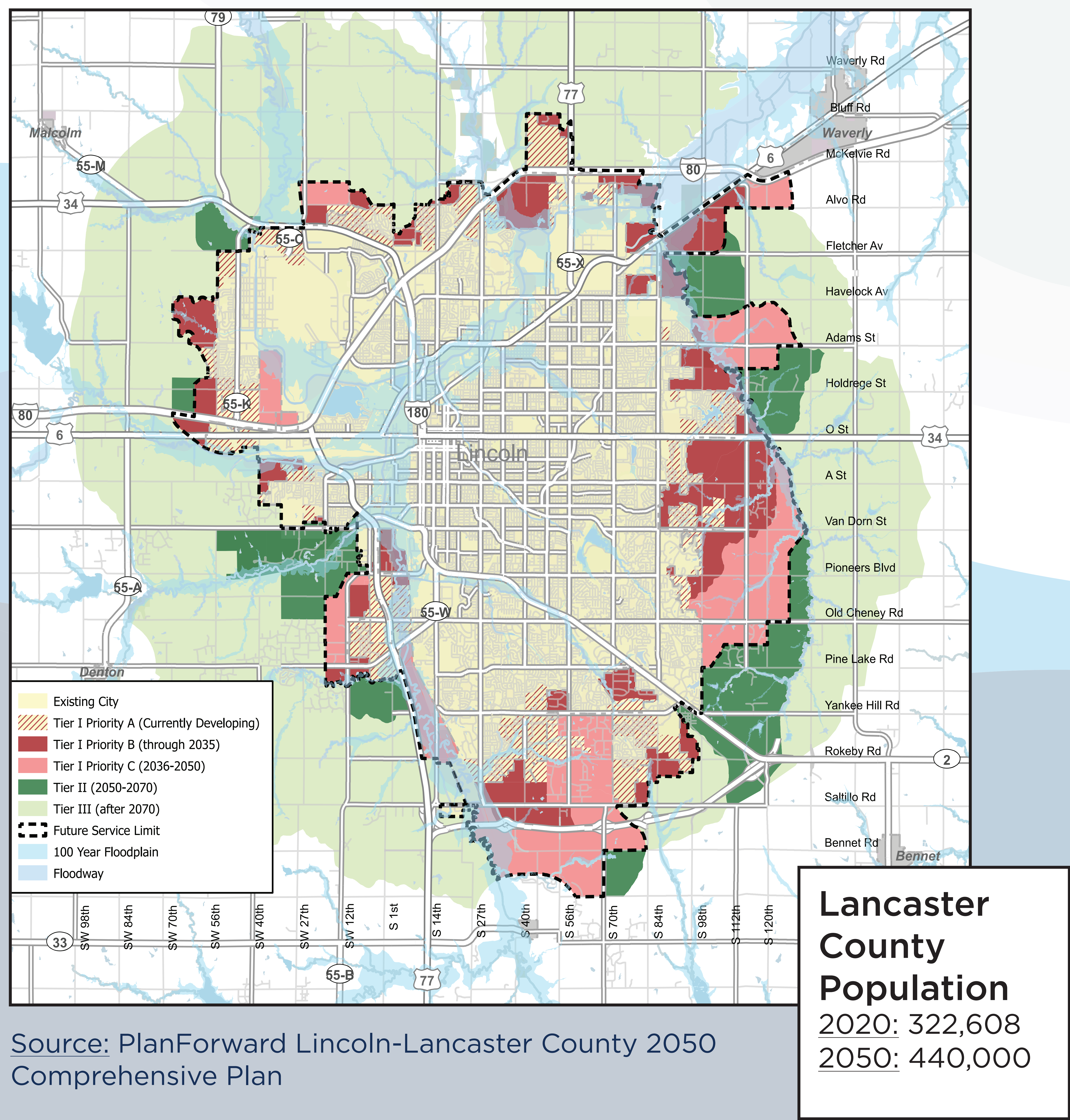
# LINCOLN WATER SYSTEM SEASONAL WATER DEMAND AND SUPPLY PROJECTIONS

Supply is based both on meeting growth needs and redundancy. Lincoln currently does not have a redundant water source.





# CURRENT SERVICE AREA / FUTURE PROJECTED GROWTH OF CITY





# MAYOR'S WATER SOURCE ADVISORY COUNCIL

**Mission -** To provide feedback and input to the City on criteria, alternatives and priorities for a second water supply that will enable Lincoln to continue to grow and provide resiliency against drought, natural disasters and other events that can impact source water supply capacity and quality.



*Mayor's Water Source Advisory Council 2022.*

## MEMBERS

The Mayor's Water Source Advisory Council is made up of a variety of public stakeholders, water, agriculture, and science-related experts, and City and State leaders. The 27-member group meets once a month for six months to review the Lincoln Water System (LWS) Alternatives Analysis that will help the City navigate complex design, construction, financial, legal, and governance options. The analysis is scheduled to be completed early January 2023.

### **CHAIR - SUSAN SEACREST**

Founder, and former President of the Nebraska Groundwater Foundation

### **VICE CHAIR - ELIOT BOSTAR**

State Senator, District 29

### **CITY LEAD - ELIZABETH ELLIOTT**

Director, Lincoln Transportation and Utilities

### **ANDREW DUNKLEY**

Director of State Governmental Relations, Nebraska Farm Bureau

### **ANNA WISHART**

State Senator, District 27

### **BRITTNEY ALBIN**

Sustainability Coordinator, Lincoln Public Schools

### **CHITTARANJAN RAY**

UNL Professor and Director, Nebraska Water Center

### **DAVID CARY, DIRECTOR**

Lincoln Lancaster County Planning Department

### **DONNA GARDEN**

Assistant Director, Lincoln Transportation and Utilities

### **GLENN JOHNSON**

Former Lower Platte South Natural Resources District General Manager

### **HOLLEY SALMI**

Vice President Public Affairs & Policy, State of Nebraska Chamber of Commerce

### **JEANNA MCCLURE**

Executive Director, Nebraska American Council of Engineering Companies

### **JERRY OBRIST**

Former Lincoln Water System Division Manager

### **KATIE WILSON**

Executive Director, Nebraska Associated General Contractors

### **KENNON MEYER**

Attorney, Blankenau Wilmoth Jarecke LLP

### **LORI SEIBEL**

President & Chief Executive Officer, Community Health Endowment

### **LYNN REX**

Executive Director, Nebraska League of Municipalities

### **MARC LEBARON**

Chief Executive Officer, Lincoln Industries

### **MARTHA SHULSKI**

Nebraska State Climatologist

### **MICHON MORROW**

Lincoln Police Department

### **RICHARD MEGINNIS**

Lincoln City Council

### **SEAN FLOWERDAY**

Lancaster County Commissioner

### **TJ MCDOWELL**

Senior Advisor to Mayor Gaylor Baird, One Lincoln Initiative

### **TODD WILTGEN**

Public Policy Specialist, Lincoln Chamber of Commerce

### **TOM BECKIUS**

Lincoln City Council

### **TRISH OWEN**

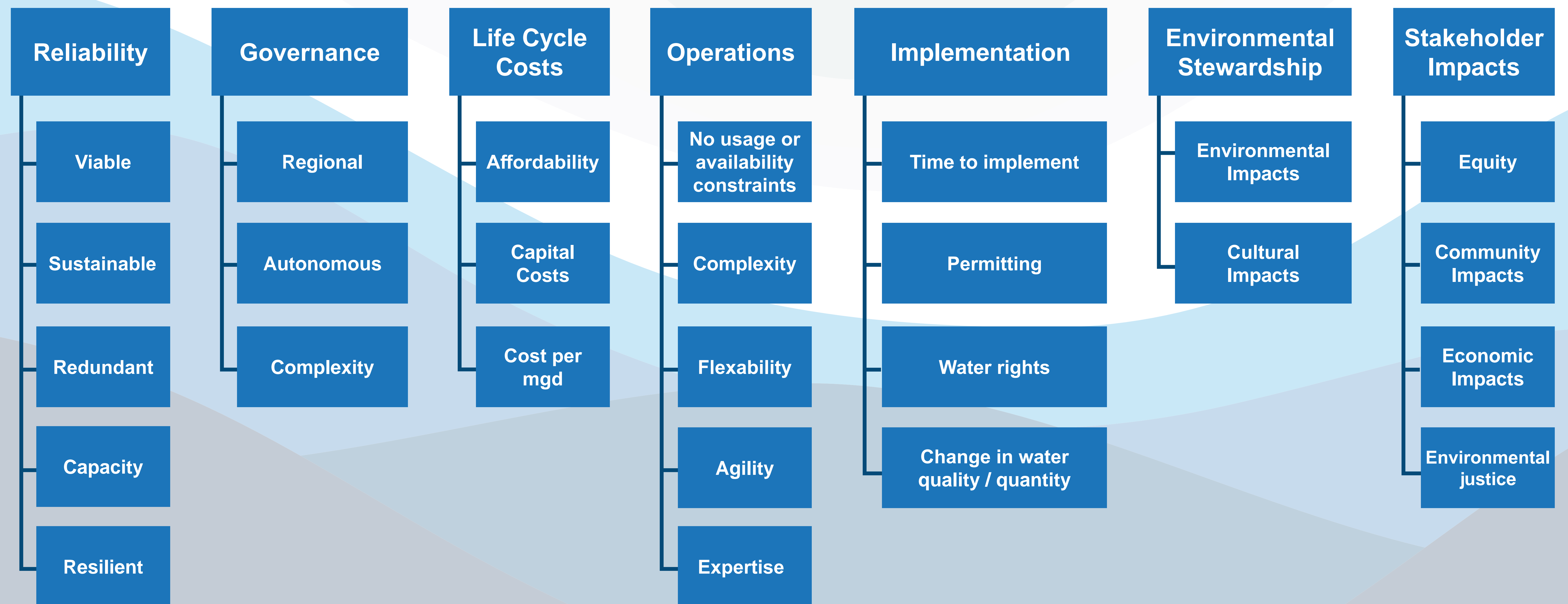
Vice President, Corporate Operations, Lincoln Electric System

### **TUT KAILECH**

Neighborworks Lincoln



# FACTORS USED TO EVALUATE ALTERNATIVES





# ALTERNATIVE SCREENING PROCESS



## UNIVERSE OF ALTERNATIVES

- Bell Creek Reservoir
- High Plains Aquifer
- Schuyler Wellfield
- Dakota Formation
- Paleo Valley Aquifer
- Loup River Wellfield
- Elkhorn River Wellfield
- Surface Water Reservoirs Along Loup & Elkhorn Rivers
- Fully Develop Existing Wellfield
- Expand Existing Wellfield South of I-80
- Off Channel Surface Reservoir
- Omaha MUD Interconnect
- Missouri River Surface Water Intake to Ashland
- Missouri River Wellfield to Ashland
- Missouri River Surface Water Intake to Lincoln
- Missouri River Wellfield to Lincoln
- Combination of Alternatives



- Expand Existing Wellfield
- Off Channel Surface Reservoir
- Omaha MUD Interconnect
- Missouri River Surface Water Intake to Ashland
- Missouri River Wellfield to Ashland
- Missouri River Surface Intake, Treatment Plant, Potable Water Supply to Lincoln
- Missouri River Wellfield Treatment Plant, Potable Water Supply to Lincoln



## RECOMMENDED ALTERNATIVE

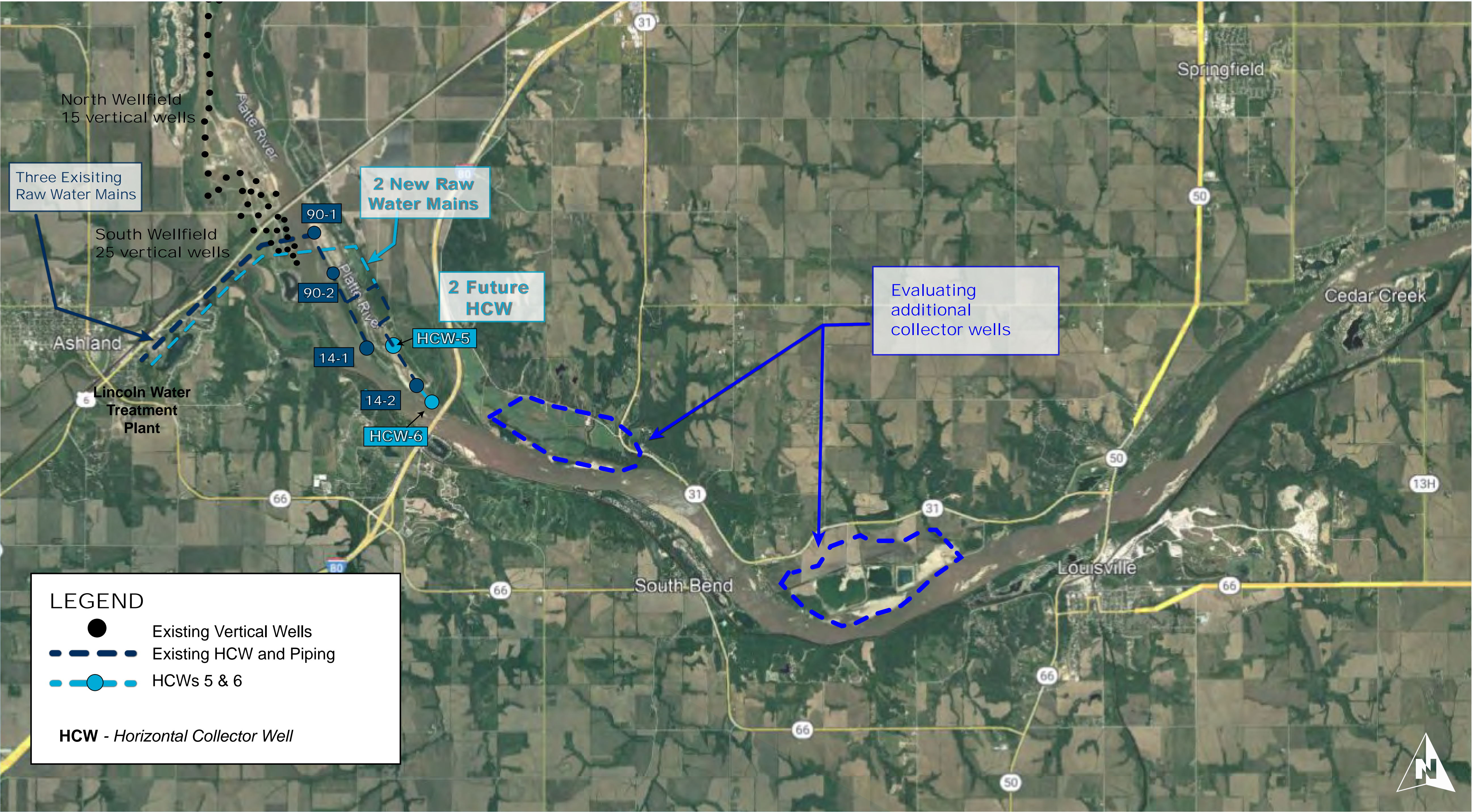


## On-going Water Supply Enhancements

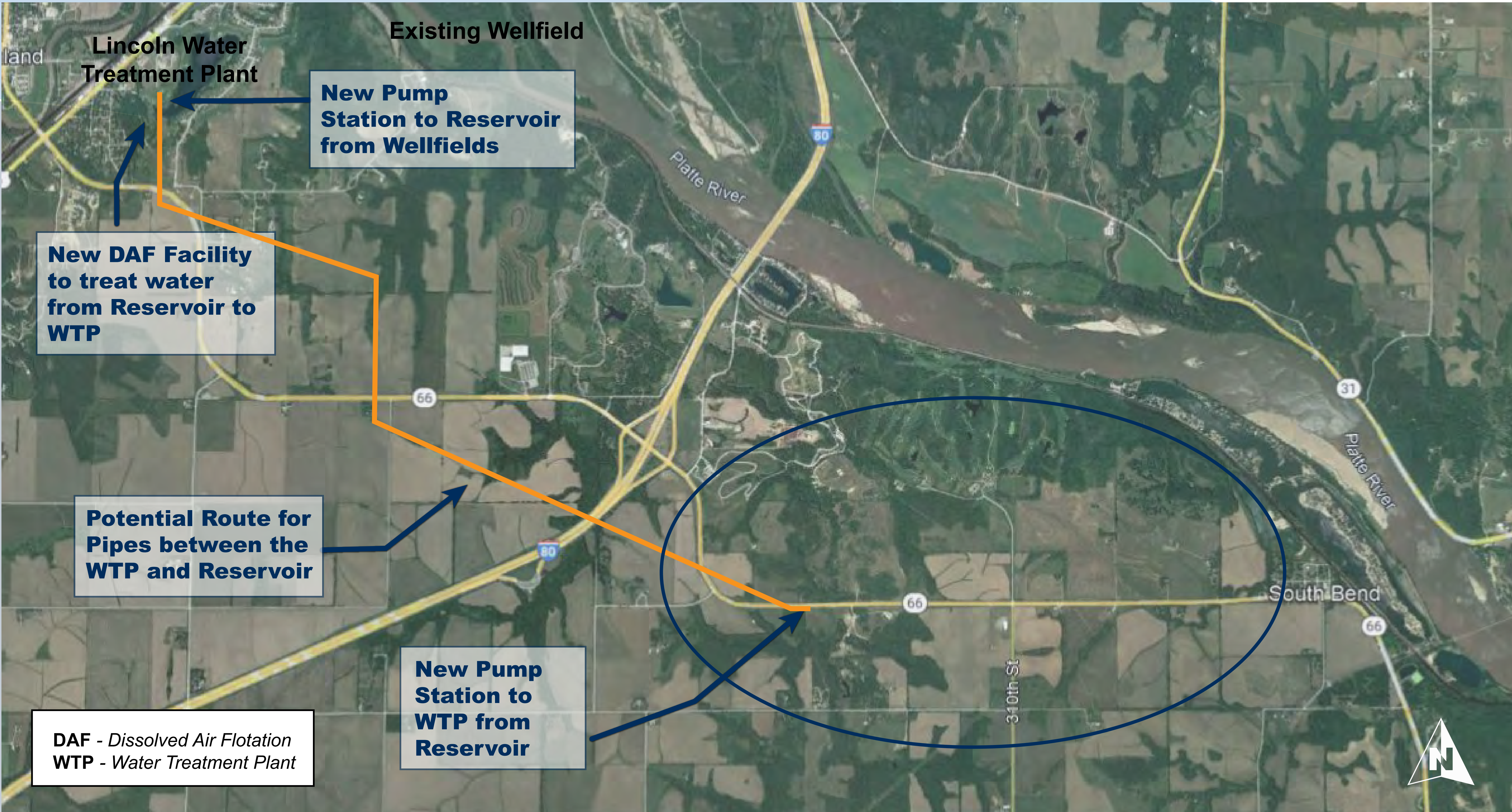
- Conservation
- Drought Contingency Plan
- Water re-use
- Aquifer Storage and Recovery



# EXPAND EXISTING WELLFIELD

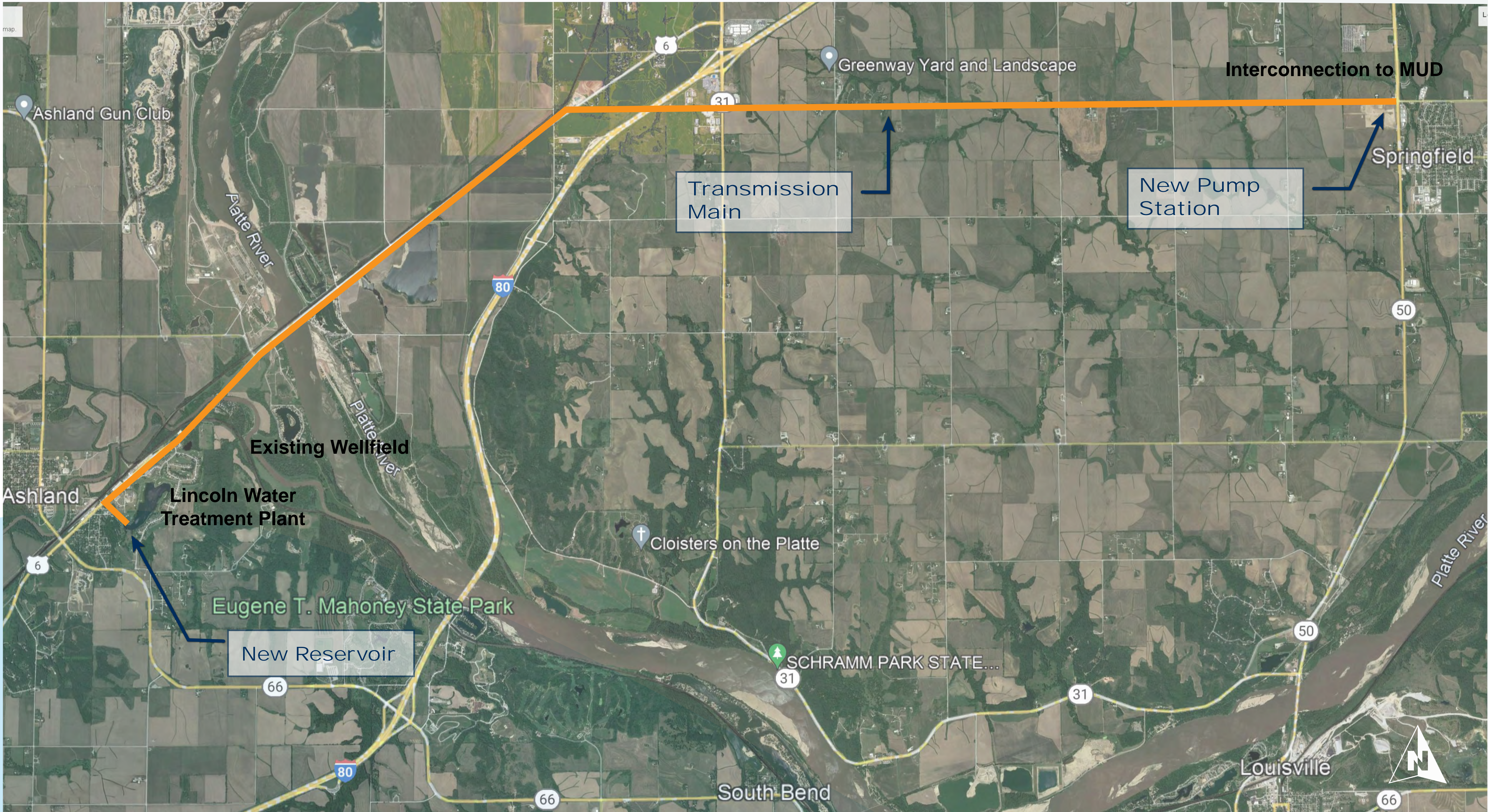


# OFF-CHANNEL RESERVOIR

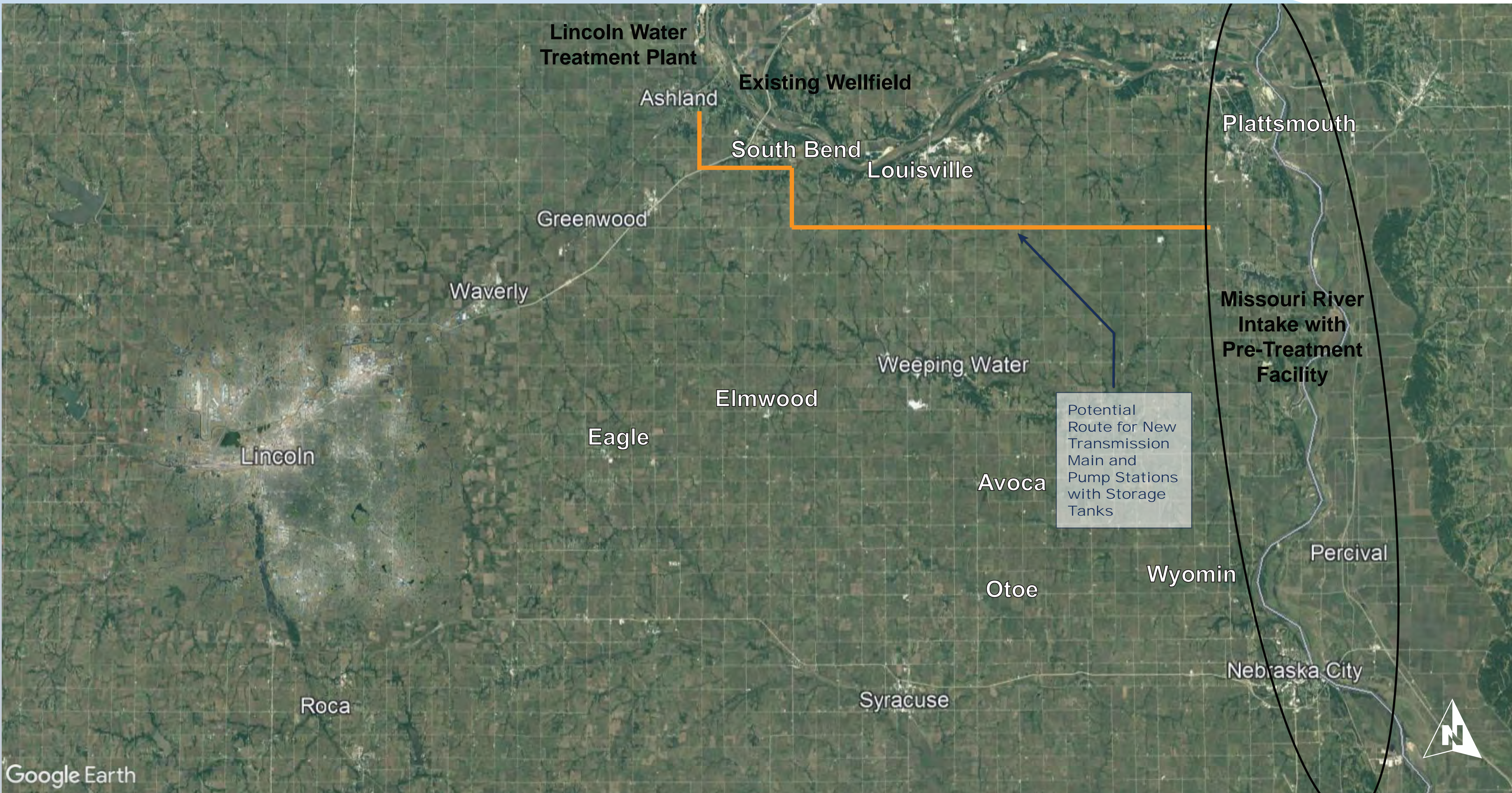




# MUD INTERCONNECT



## MISSOURI RIVER SURFACE WATER INTAKE TO ASHLAND TREATMENT PLANT

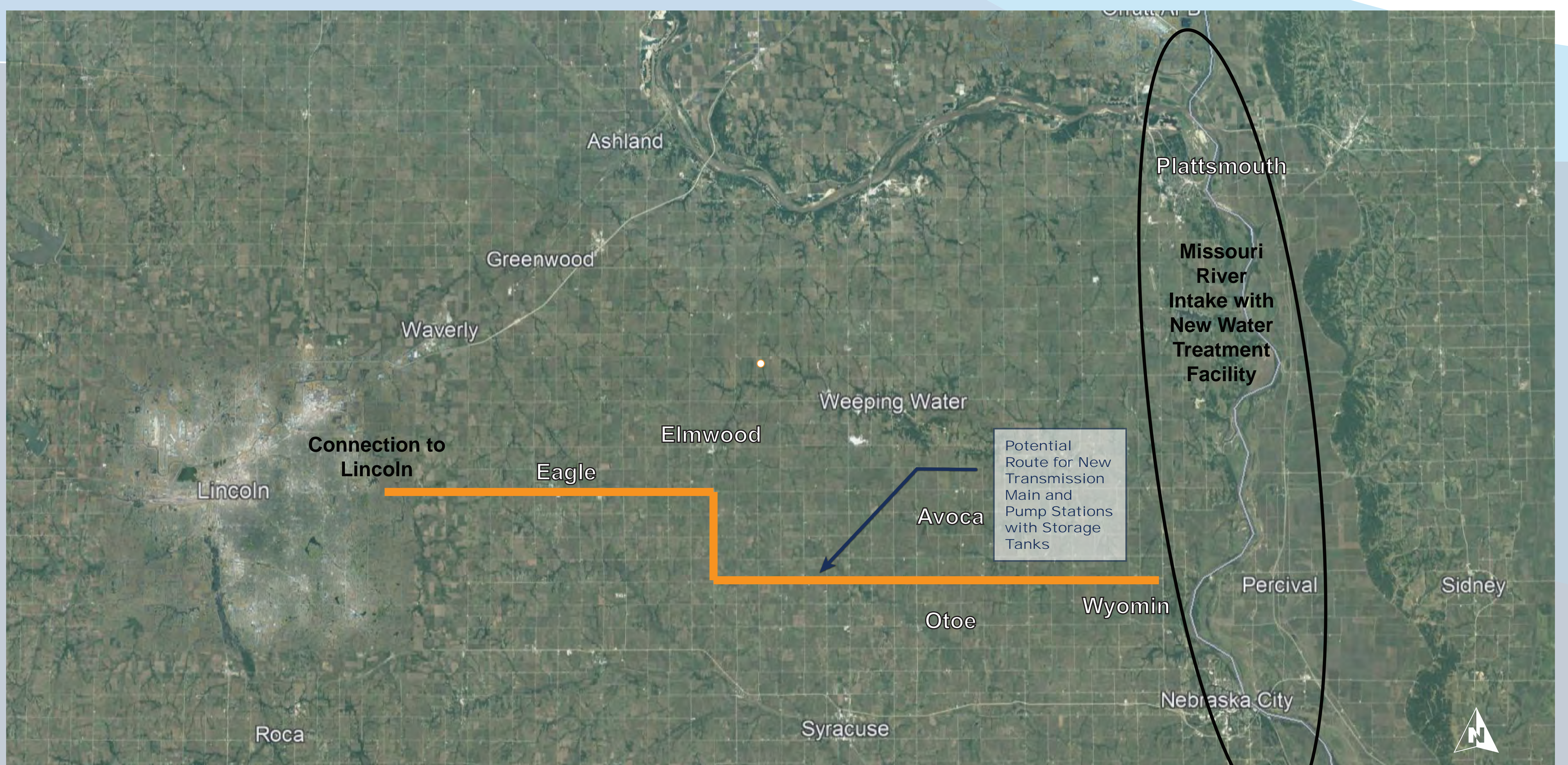




# MISSOURI RIVER WELLFIELD TO ASHLAND TREATMENT PLANT

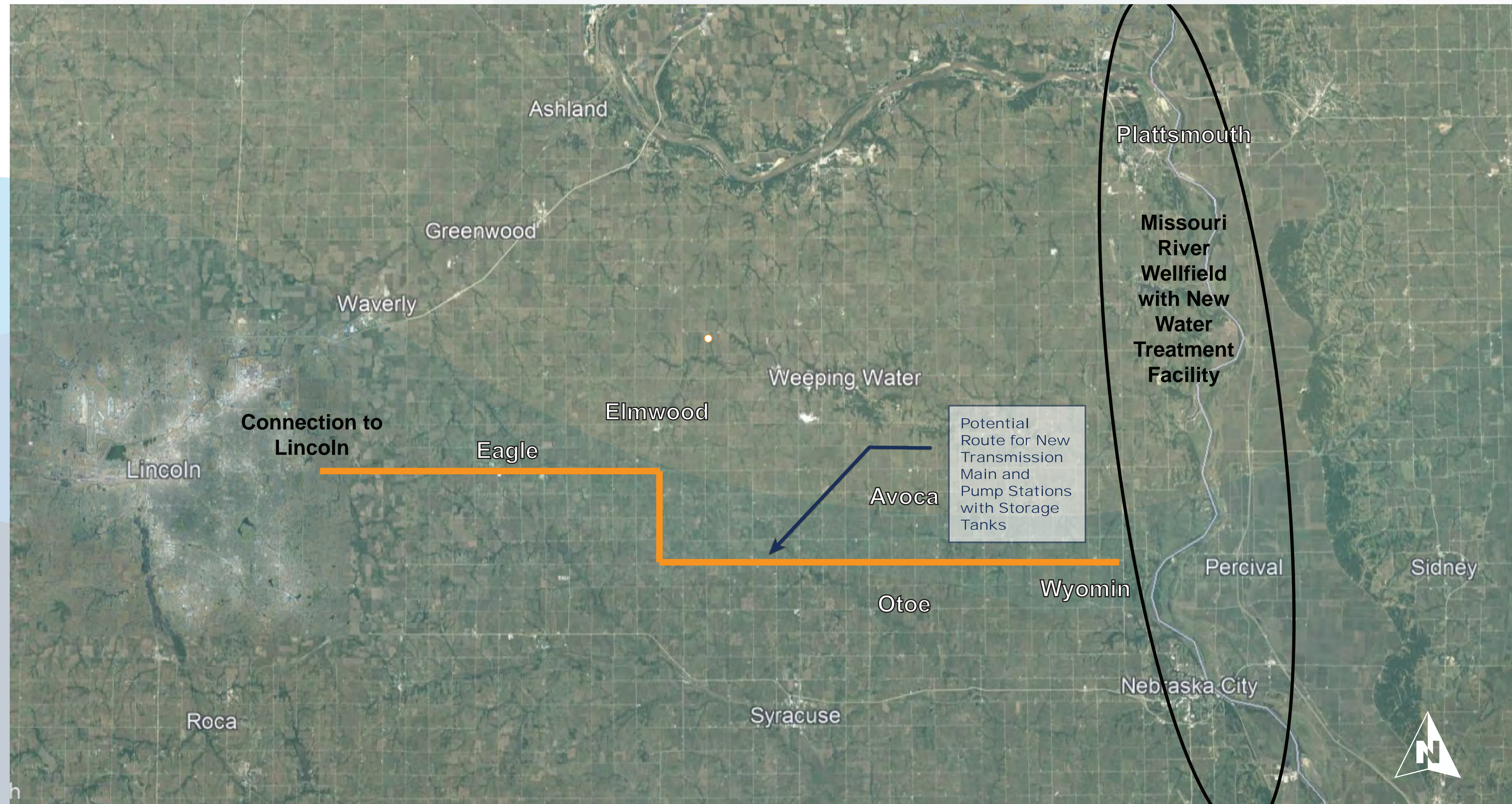


# MISSOURI RIVER SURFACE WATER INTAKE, TREATMENT PLANT, POTABLE WATER SUPPLY TO LINCOLN





# MISSOURI RIVER WELLFIELD, TREATMENT PLANT, POTABLE WATER SUPPLY TO LINCOLN





# WATER 2.0 SECURING LINCOLN'S SECOND SOURCE TIMELINE

## PHASE 1

Alternative  
Selection

2022 - 2023

## PHASE 2

Alternative  
Validation

2023-2025

## PHASE 3

Design and  
Construction

Future