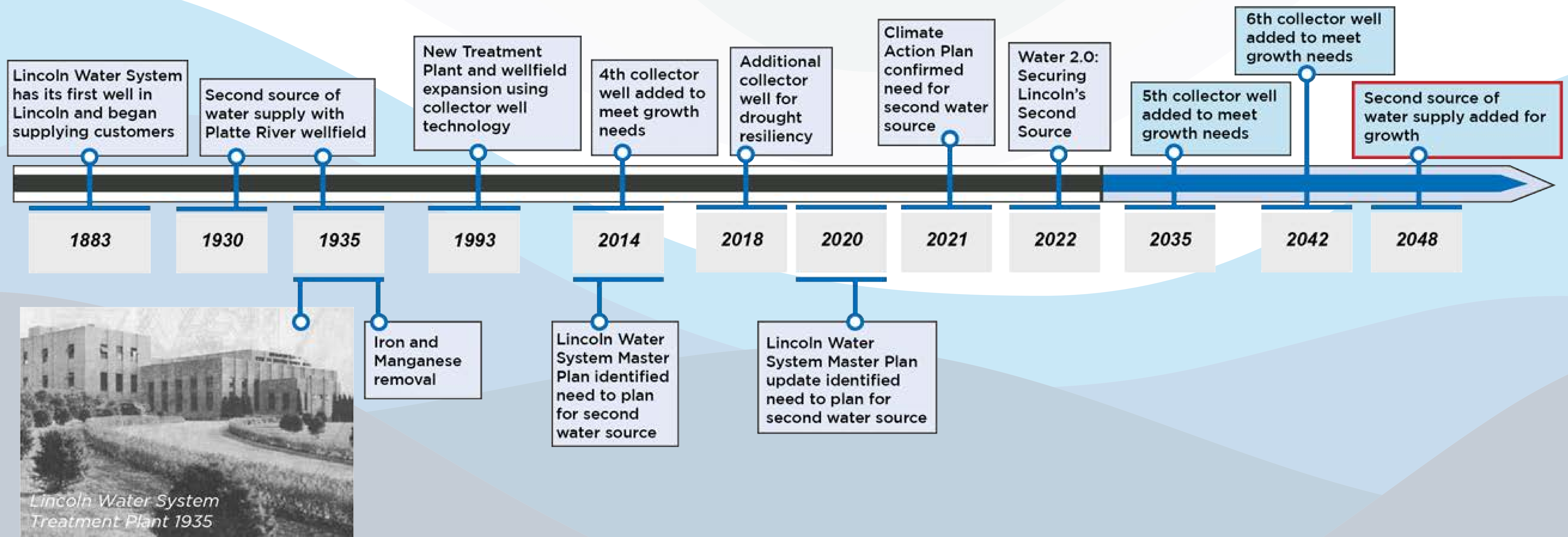
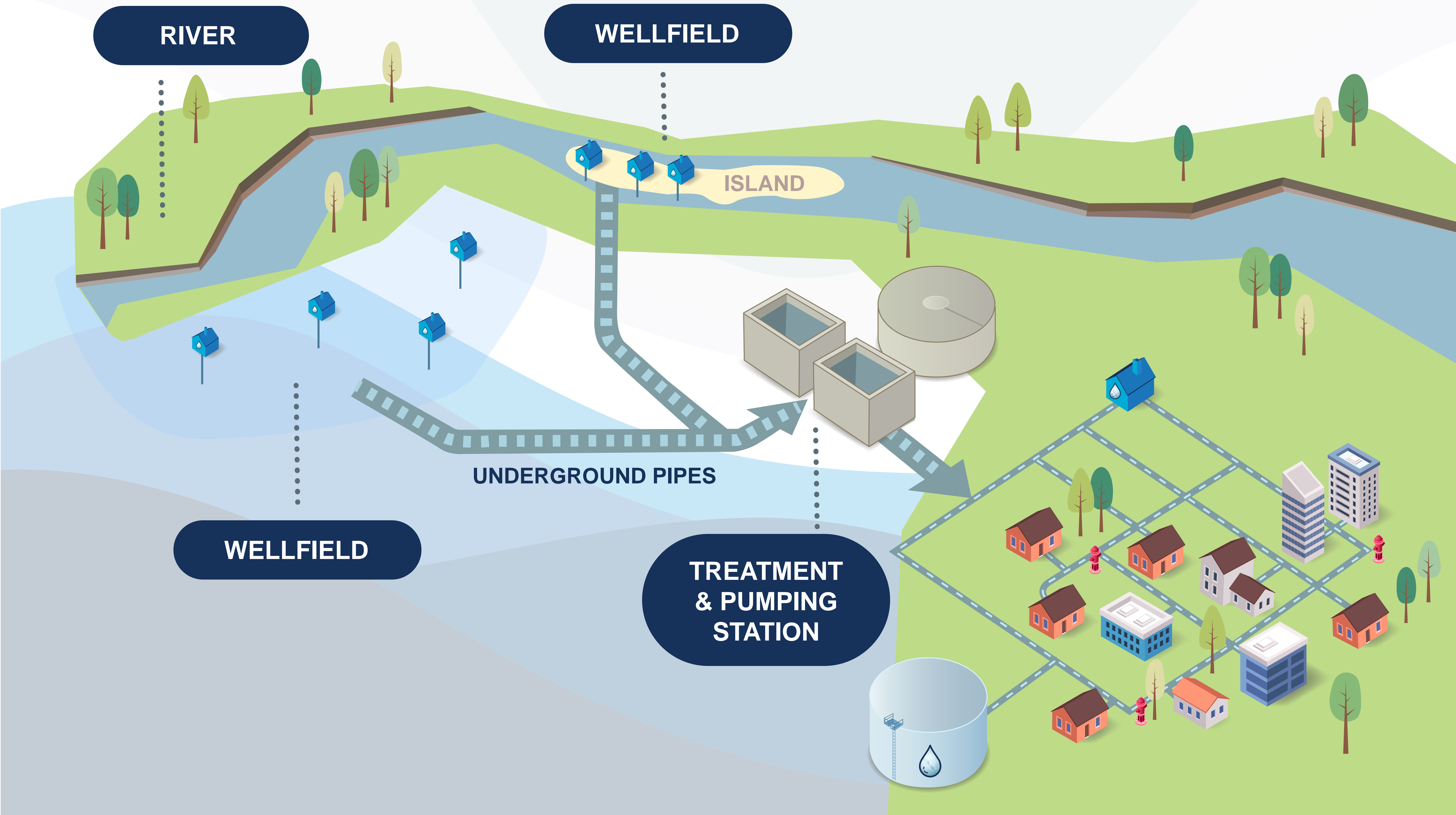


LINCOLN WATER SUPPLY PLANNING TIMELINE

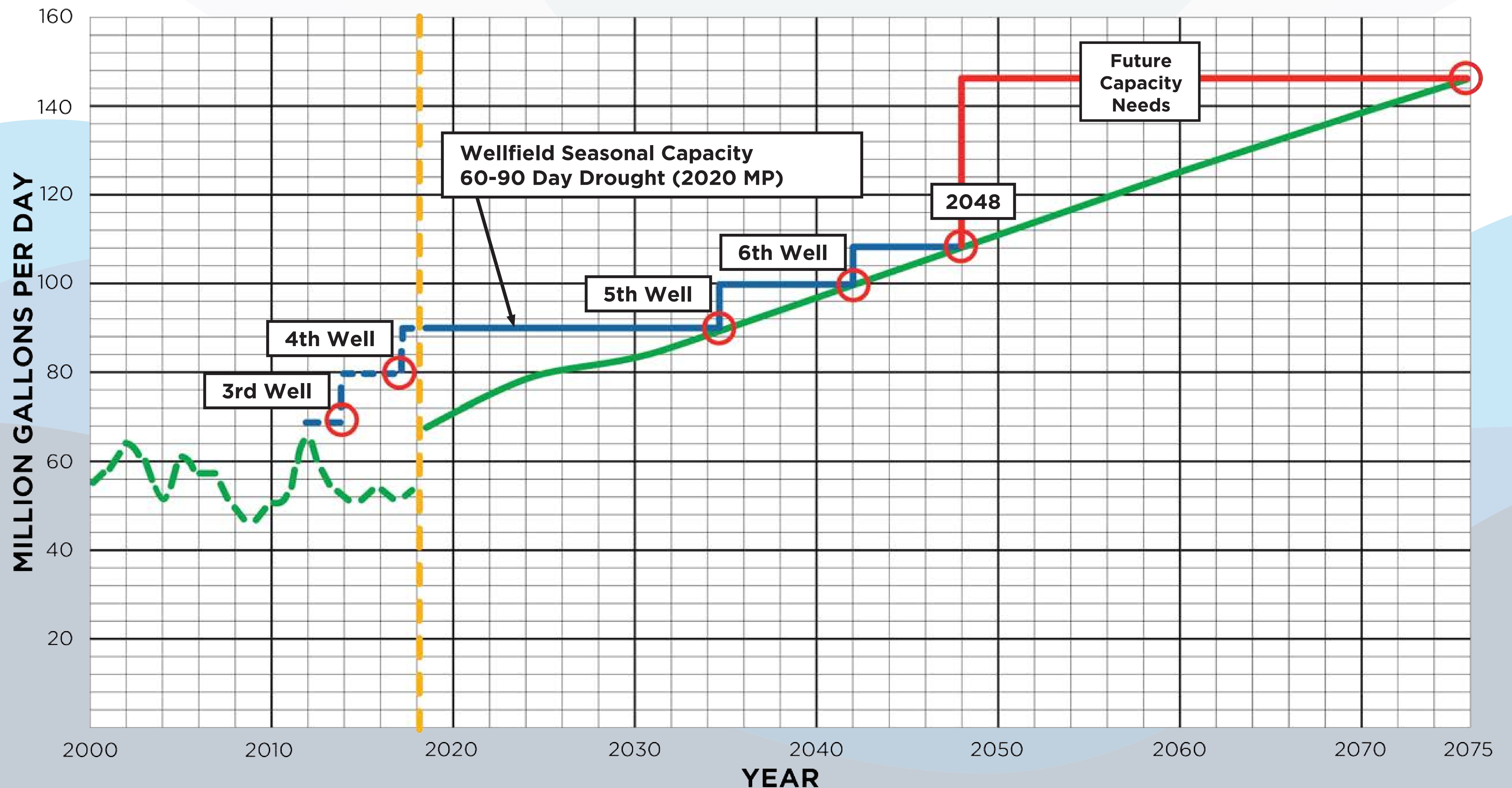


WATER SUPPLY PROCESS



LINCOLN WATER SYSTEM SEASONAL WATER DEMAND AND SUPPLY PROJECTIONS

Supply is based both on meeting growth needs and redundancy. Lincoln currently does not have a redundant water source.

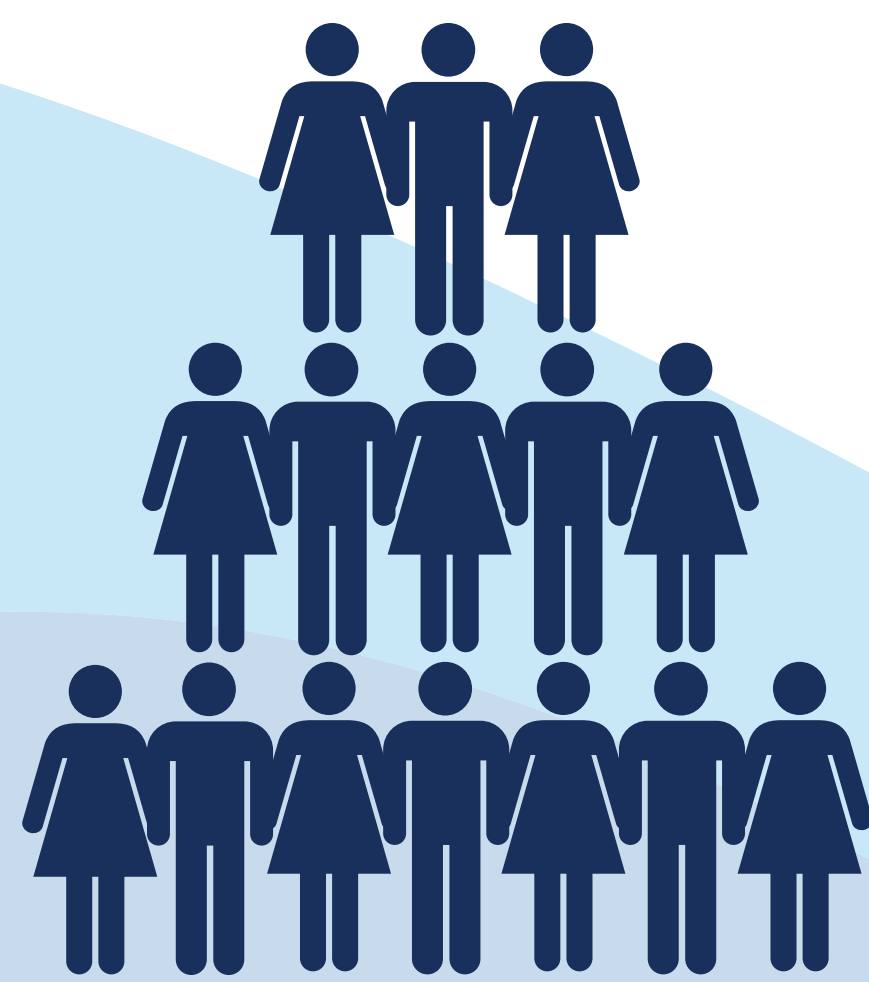


EXAMPLES OF RECENT EXTREME WEATHER EVENTS



WATER SUPPLY TIMELINE

Today-2048



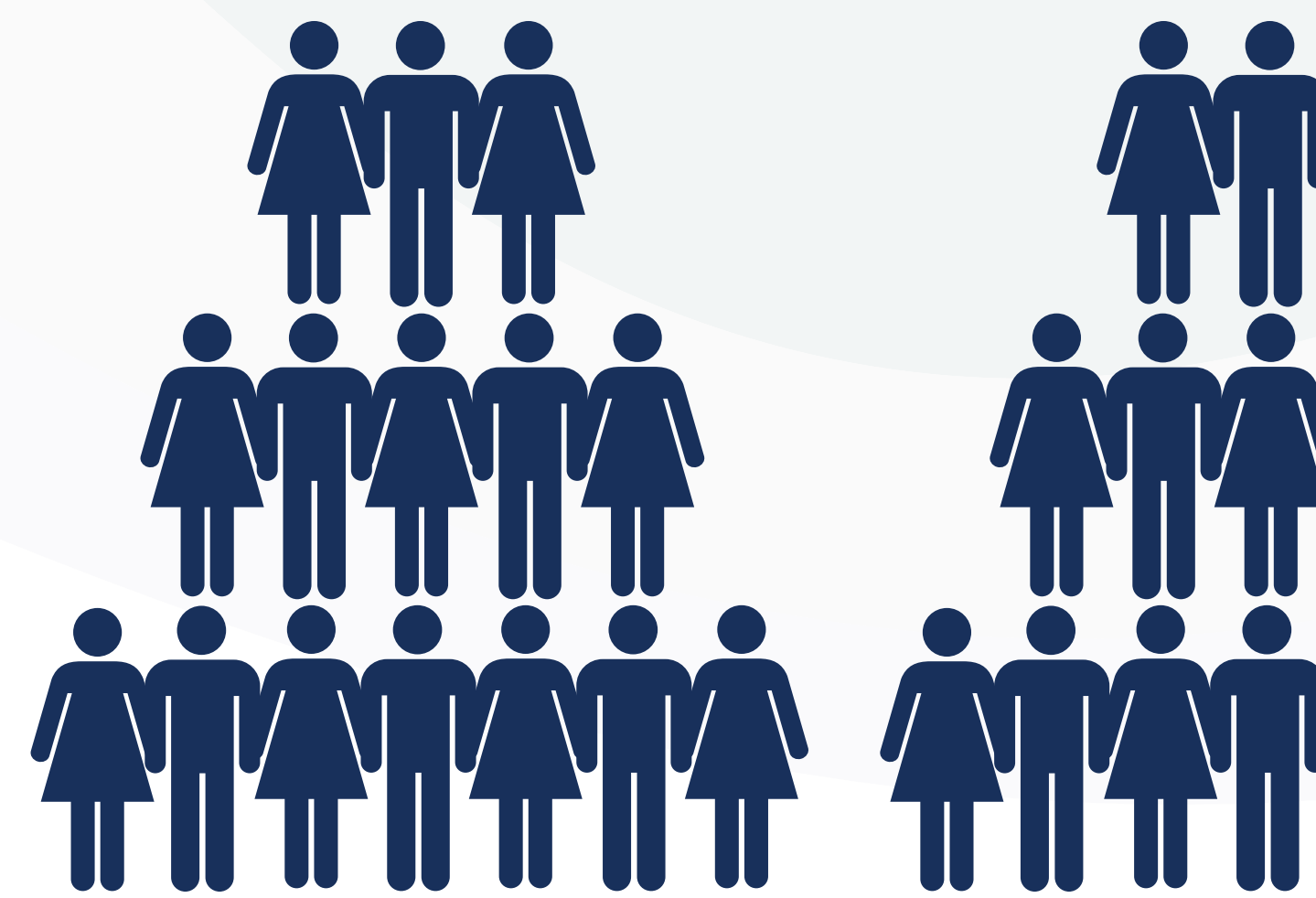
Available Water Supply:
105 MGD



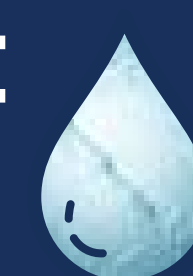
Available Water Source:

- 1 Existing Platte River Wellfield

2048-2075



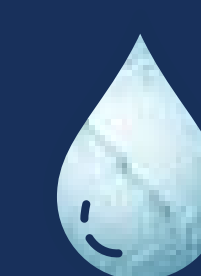
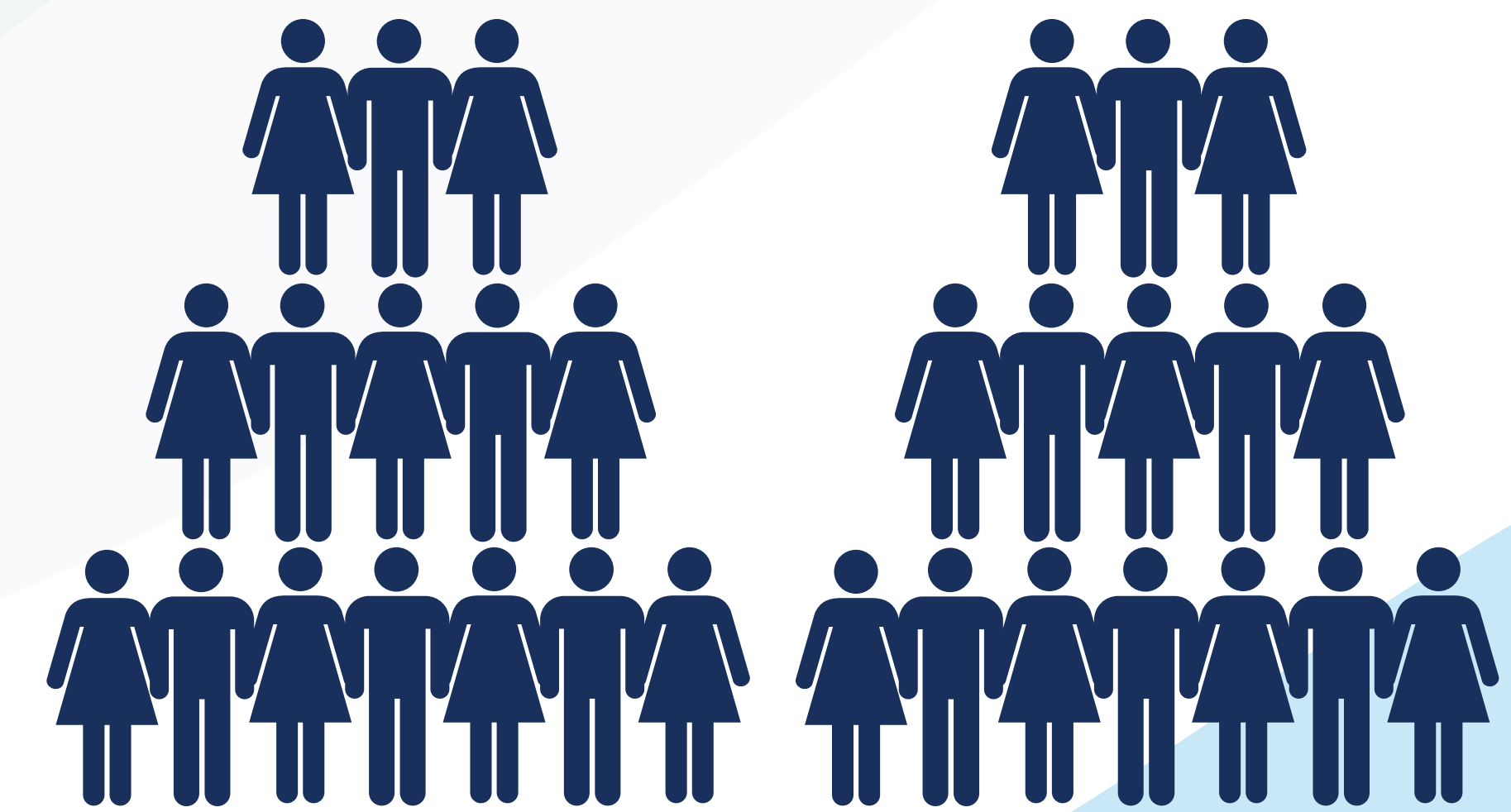
Available Water Supply:
145 MGD



Available Water Source:

- 1 Existing Platte River Wellfield +
- 2 Missouri River Wellfield

Beyond 2075



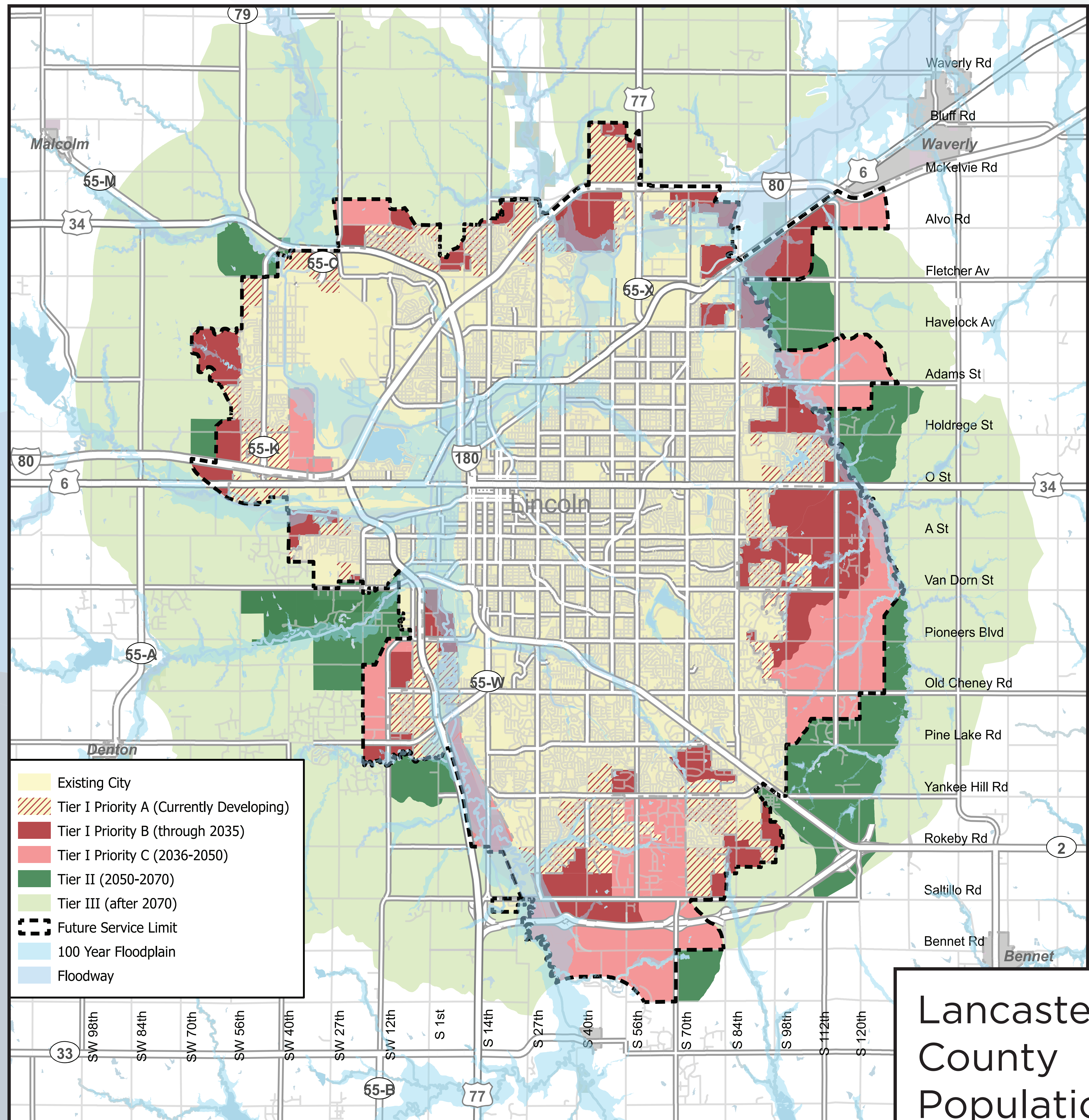
Available Water Supply:
More than 145 MGD



Available Water Source:

- 1 Existing Platte River Wellfield +
- 2 Missouri River Wellfield +
- 3 Missouri River Wellfield Expansion

CURRENT SERVICE AREA / FUTURE PROJECTED GROWTH OF CITY



Source: PlanForward Lincoln-Lancaster County 2050 Comprehensive Plan

Lancaster
County
Population
2020: 322,608
2050: 440,000

MAYOR'S WATER SOURCE ADVISORY COUNCIL

Mission - To provide feedback and input to the City on criteria, alternatives and priorities for a second water supply that will enable Lincoln to continue to grow and provide resiliency against drought, natural disasters and other events that can impact source water supply capacity and quality.



Mayor's Water Source Advisory Council 2022.

MEMBERS

The Mayor's Water Source Advisory Council is made up of a variety of public stakeholders, water, agriculture, and science-related experts, and City and State leaders. The 27-member group meets once a month for six months to review the Lincoln Water System (LWS) Alternatives Analysis that will help the City navigate complex design, construction, financial, legal, and governance options. The analysis is scheduled to be completed early January 2023.

CHAIR - SUSAN SEACREST

Founder, and former President of the Nebraska Groundwater Foundation

VICE CHAIR - ELIOT BOSTAR

State Senator, District 29

CITY LEAD - ELIZABETH ELLIOTT

Director, Lincoln Transportation and Utilities

ANDREW DUNKLEY

Director of State Governmental Relations, Nebraska Farm Bureau

ANNA WISHART

State Senator, District 27

BRITTNEY ALBIN

Sustainability Coordinator, Lincoln Public Schools

CHITTARANJAN RAY

UNL Professor and Director, Nebraska Water Center

DAVID CARY, DIRECTOR

Lincoln Lancaster County Planning Department

DONNA GARDEN

Assistant Director, Lincoln Transportation and Utilities

GLENN JOHNSON

Former Lower Platte South Natural Resources District General Manager

HOLLEY SALMI

Vice President Public Affairs & Policy, State of Nebraska Chamber of Commerce

JEANNA MCCLURE

Executive Director, Nebraska American Council of Engineering Companies

JERRY OBRIST

Former Lincoln Water System Division Manager

KATIE WILSON

Executive Director, Nebraska Associated General Contractors

KENNON MEYER

Attorney, Blankenau Wilmoth Jarecke LLP

LORI SEIBEL

President & Chief Executive Officer, Community Health Endowment

LYNN REX

Executive Director, Nebraska League of Municipalities

MARC LEBARON

Chief Executive Officer, Lincoln Industries

MARTHA DURR

Nebraska State Climatologist

MICHON MORROW

Lincoln Police Department

RICHARD MEGINNIS

Lincoln City Council

SEAN FLOWERDAY

Lancaster County Commissioner

TJ MCDOWELL

Senior Advisor to Mayor Gaylor Baird, One Lincoln Initiative

TODD WILTGEN

Public Policy Specialist, Lincoln Chamber of Commerce

TOM BECKIUS

Lincoln City Council

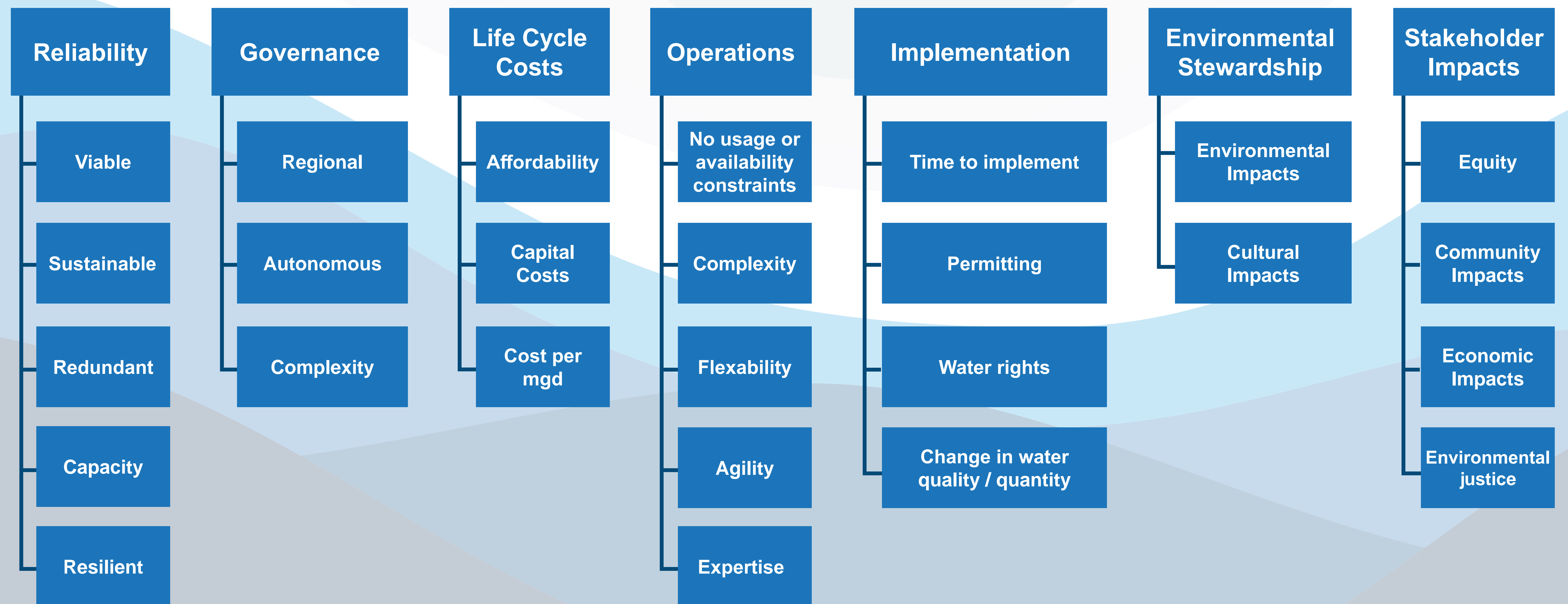
TRISH OWEN

Vice President, Corporate Operations, Lincoln Electric System

TUT KAILECH

Neighborworks Lincoln

FACTORS USED TO EVALUATE ALTERNATIVES



ALTERNATIVE SCREENING PROCESS

UNIVERSE OF ALTERNATIVES

- Bell Creek Reservoir
- High Plains Aquifer
- Schuyler Wellfield
- Dakota Formation
- Paleo Valley Aquifer
- Loup River Wellfield
- Elkhorn River Wellfield
- Surface Water Reservoirs Along Loup & Elkhorn Rivers
- Fully Develop Existing Wellfield
- Expand Existing Wellfield South of I-80
- Off Channel Surface Reservoir
- Omaha MUD Interconnect
- Missouri River Surface Water Intake to Ashland
- Missouri River Wellfield to Ashland
- Missouri River Surface Water Intake to Lincoln
- Missouri River Wellfield to Lincoln
- Combination of Alternatives

- Expand Existing Wellfield
- Off Channel Surface Reservoir
- Omaha MUD Interconnect
- Missouri River Surface Water Intake to Ashland
- Missouri River Wellfield to Ashland
- Missouri River Surface Intake, Treatment Plant, Potable Water Supply to Lincoln
- Missouri River Wellfield Treatment Plant, Potable Water Supply to Lincoln

RECOMMENDED ALTERNATIVE

Missouri River Wellfield Treatment Plant, Potable Water Supply to Lincoln

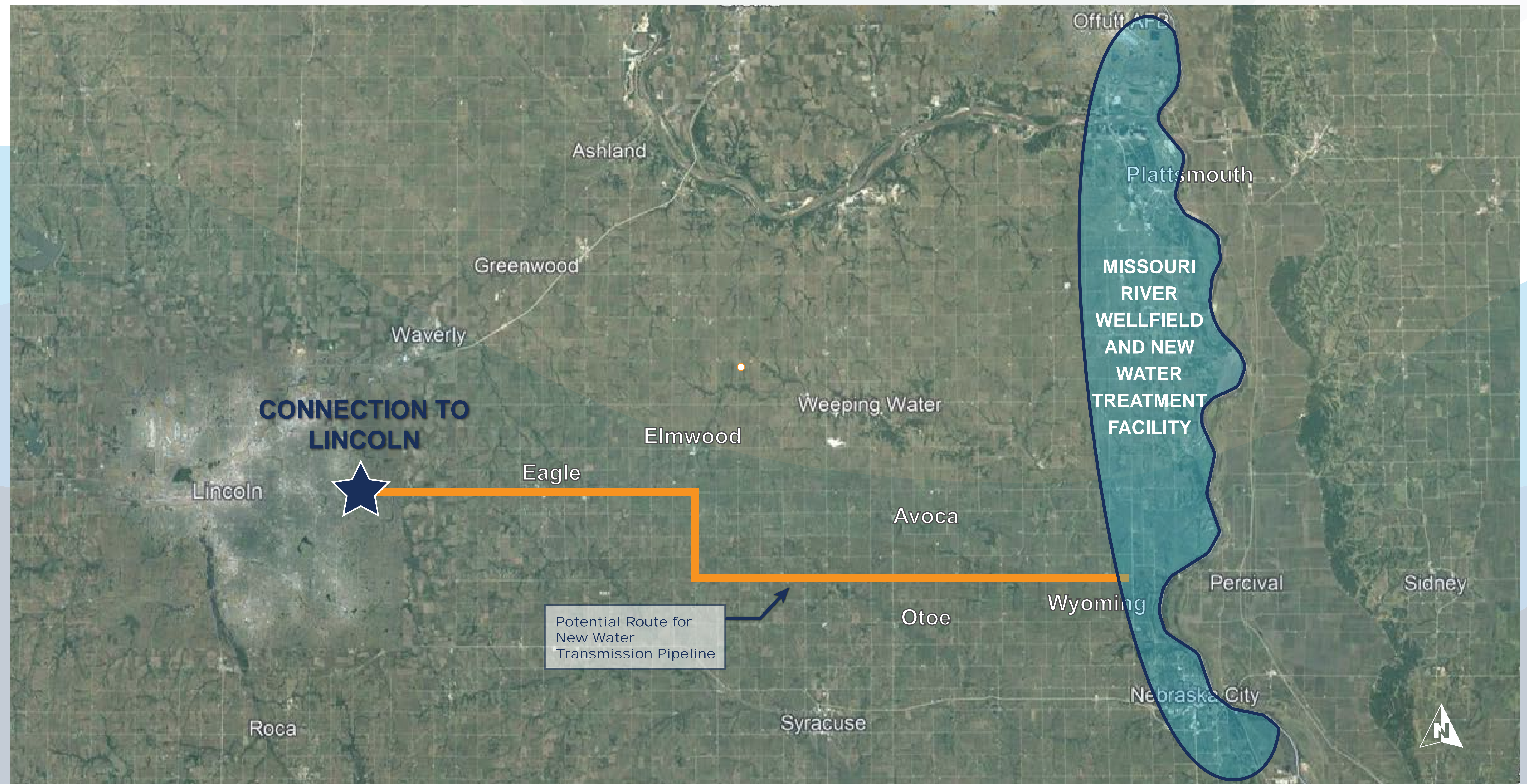
On-going Water Supply Enhancements

- Conservation
- Drought Contingency Plan
- Water re-use
- Aquifer Storage and Recovery
- Potential Future Reservoirs

RECOMMENDATION FROM ADVISORY COUNCIL

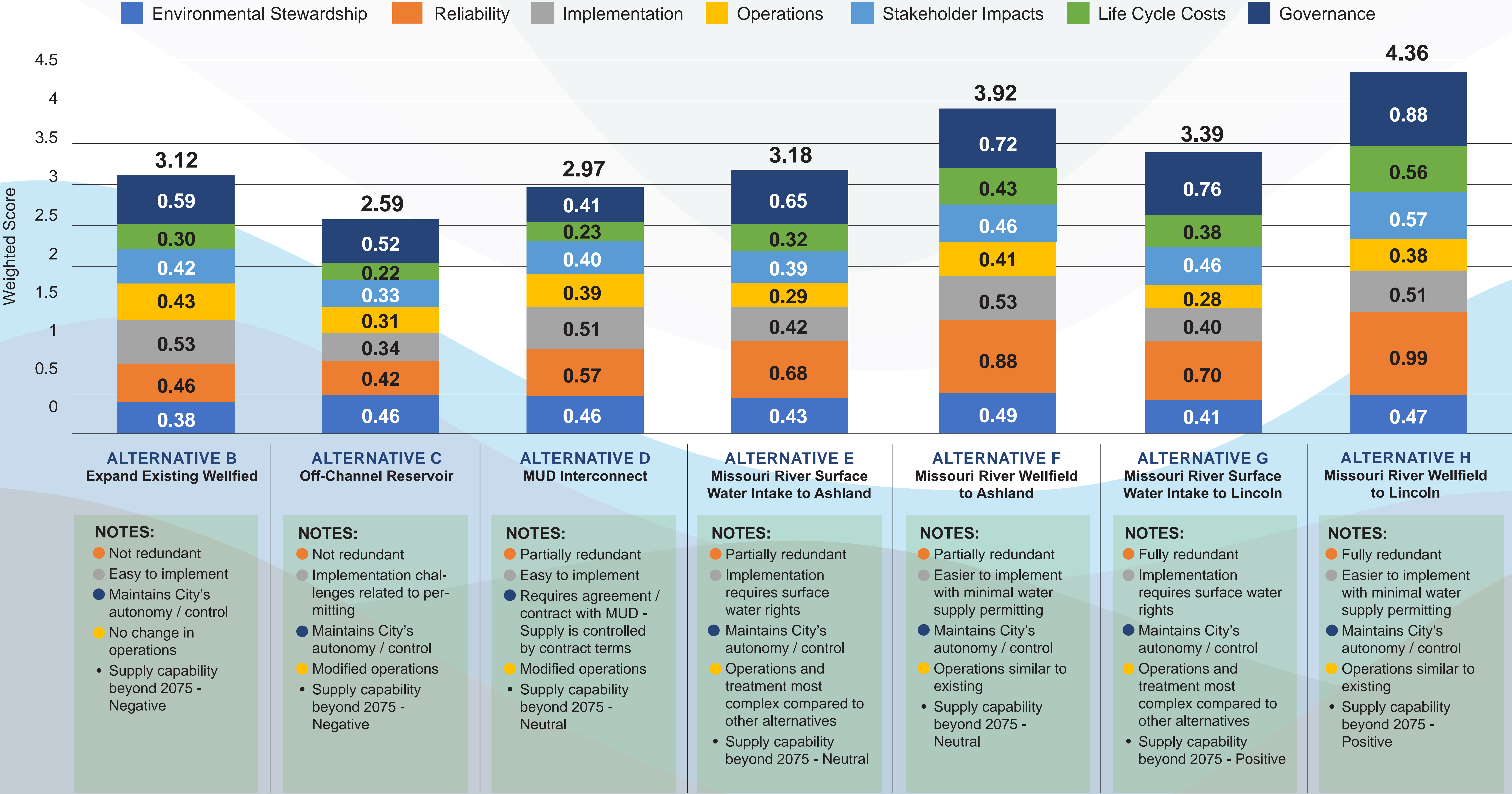
We, the Water Source Advisory Council, recommend that the City pursue a wellfield and treatment facility along the Missouri River with direct transport of treated water to Lincoln. The Advisory Council also recommends that the City explore the potential impacts and benefits of a reservoir lake, as proposed by the state legislature.

RECOMMENDED ALTERNATIVE BY MAYOR'S WATER SOURCE ADVISORY COUNCIL



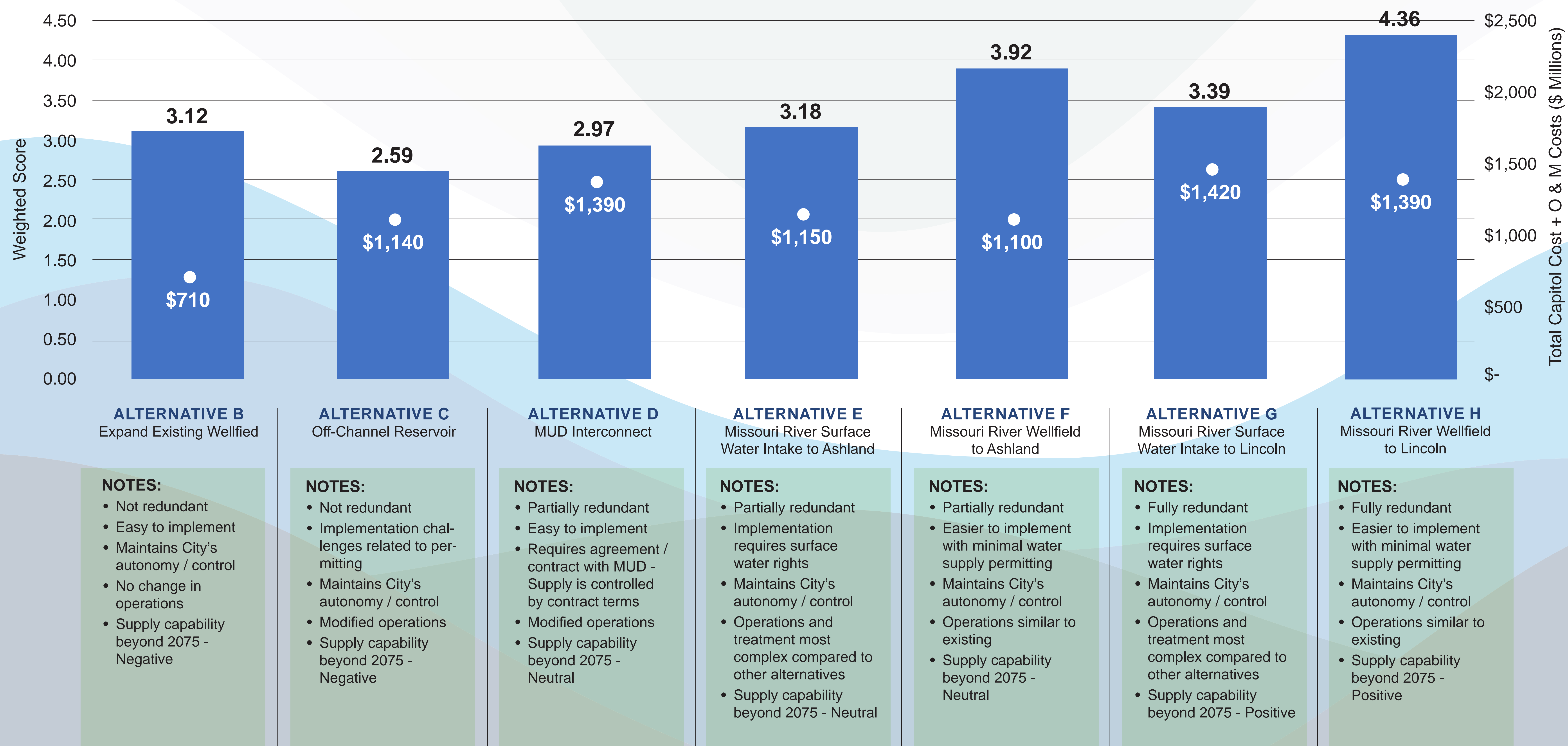
WATER SUPPLY ALTERNATIVES

FINAL WEIGHTED SCORING



VALUE OF WATER SUPPLY ALTERNATIVES

WEIGHTED TOTAL SCORES & COSTS



WATER 2.0 SECURING LINCOLN'S SECOND SOURCE TIMELINE

PHASE 1

Alternative
Selection

2022 - 2023

PHASE 2

Alternative
Validation

2023-2025

PHASE 3

Design and
Construction

Future