



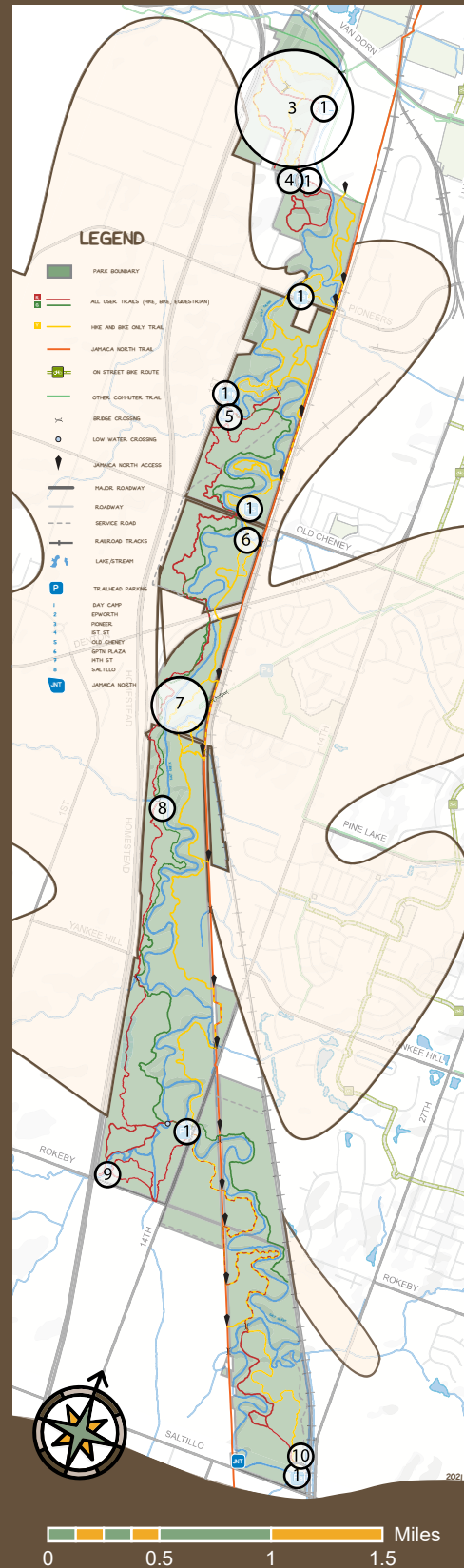
# W I L D E R N E S S P A R K

---

2021 Wilderness Park Masterplan | Lincoln Parks and Recreation Department



## PROJECT AREAS



- ① **Trailhead Improvements**  
See page 2 for more information
- ② **Kiosks and Navigational Signage**  
See page 3 for more information  
Project is not numbered on map as it covers the entire park
- ③ **Fitness Loop**  
See page 4 for more information
- ④ **Rehabilitation of Epworth Arch**  
See page 5 for more information
- ⑤ **1st St. Low-Water Crossing**  
See page 6 for more information
- ⑥ **Old Cheney Suspension Bridge**  
See page 7 for more information
- ⑦ **Rock Island Railroad Embankment/GPTN Connector Area**  
See page 8 for more information
- ⑧ **Cardwell Low-Water Crossing**  
See page 9 for more information
- ⑨ **Rokeby and Hwy 77 Bridge**  
See page 10 for more information
- ⑩ **Small Culvert Replacement**  
See page 11 for more information

## NOTES





### Work Item

#### Phase 1: FUNDED, IN PROGRESS

Asphalt-\$4,500

Rock- \$61,425

Bollards- \$37,050

**Total- \$102,975**

#### Phase 2: UNFUNDED

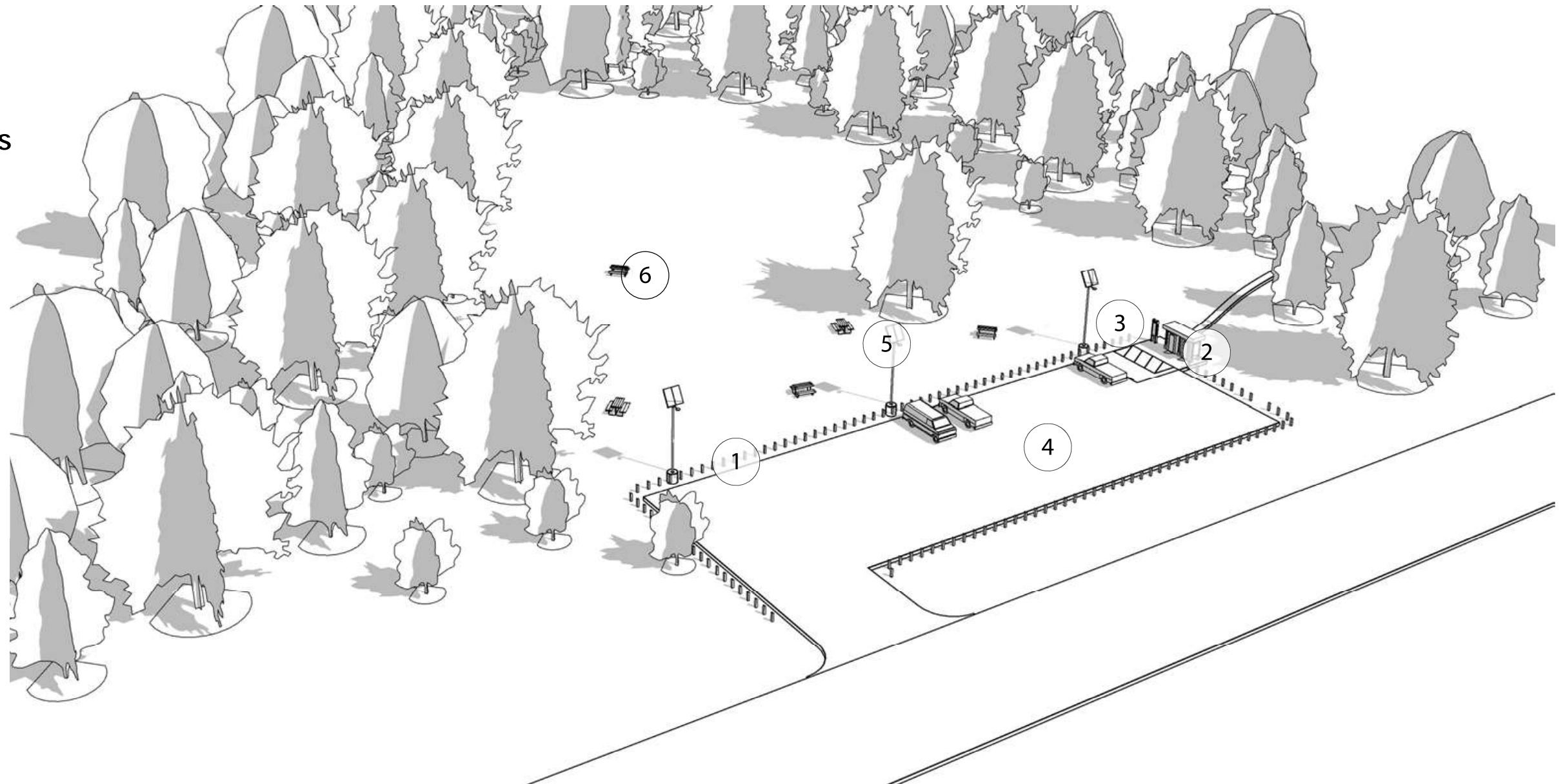
Concrete- \$35,000

RR Shelters- \$30,000

Tables- \$3,200

Lighting- \$63,000

**Total- \$131,200**



1 Replace deteriorating and missing bollards



2 Seasonal portable restroom pad/enclosure  
Only available outside floodplain



3 Kiosk



4 Grading and rock in parking lots



5 Solar Lights (programable)



6 Add picnic tables





## Kiosks

- 7 kiosks installed in phase 1 at trailhead/parking lots 1, 2, 3, 4, 5, 7, and 8.
- The remaining kiosk will be installed at the West end of the GPTN Connector with the future trail extension into Wilderness Park

## Information Displayed on Kiosks:

- Park Regulations
- Trail Etiquette
- Interpretative Stories
- "You are Here"
- Trail Alignments
- Trail Mileage
- Emergency Contact
- Points of Interest
- Park Boundary
- Adjacent Trails/Roads/Railroads
- Park Typography
- Bridges/Low Water Crossings
- Jamaica North Access Points
- Waterways
- Park Website
- Approved User Groups
- Known Hazards
- Parking lots/Trailheads
- Park Map
- And Much More...



## The Trails:

The labyrinth of Wilderness Park trails are separated into three routes:

1. "R"ed Square: All User Trail
2. "G"reen Square: All User Trail
3. "Y"ellow Square: Hike and Bike Only Trail

## Wayfinding:

- 5"x5"x8' metal tube post with mounted wayfinding navigational signage will be placed at every park intersection and Jamaica North access points.

- Each post will have a metal cap with a location number that reflects the numbers on the kiosk map. The post caps also brand the park.

- Each post will include colored squares of the adjacent trails with a directional arrow directly next to it.

- The posts closest to the parking areas/trailheads will have a "P" and arrow marker directing the user to park exits.

- Maximum number of mounted signs per side of post = 8

- 1" Spacing between mounted sign sets. Each set is a colored square/letter and a circle/arrow.

- Font = "Parker" (customized stencil for metal cutout)

- Reference arrows should be listed in the following order: Parking, JNT, Multiple Directional Arrow, Straight, Left, Right, Angled.



Total Estimated Cost: \$48,000  
Funded: In Progress





Existing Fitness Loop Features



The Fitness Loop equipment located in the northern end of the park is beginning to fail and needs to be rehabilitated. There may be an opportunity to add or relocate features in the same general area. This project would replace existing equipment with similar materials, reuse some of the galvanized steel pieces that are in good conditions, and potentially relocate or add features to space the equipment out and create a full loop.

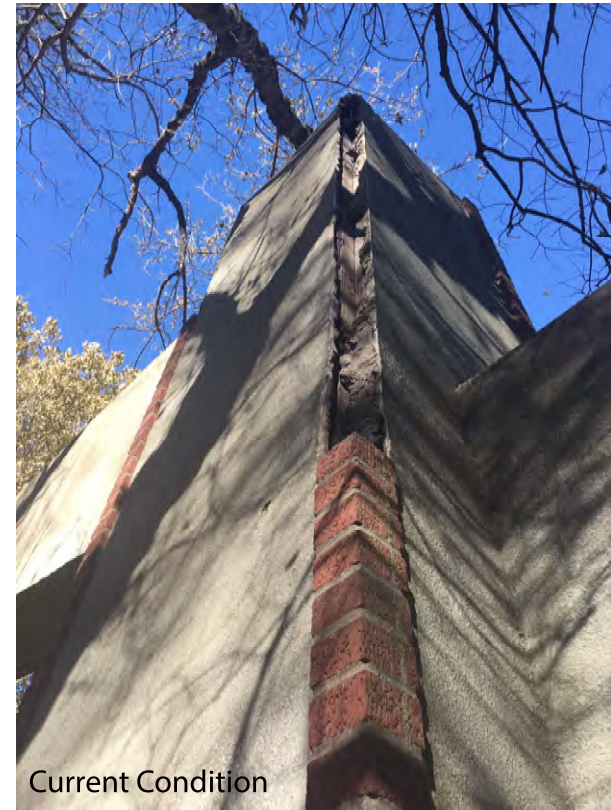
Rebuild with similar features, adjusting some locations. Estimated Cost: \$15,000 (2020 Dollars)





This project would include masonry restoration work on Epworth Arch similar to images on the right as well as clearing overgrown vegetation to establish an inviting picnic space.

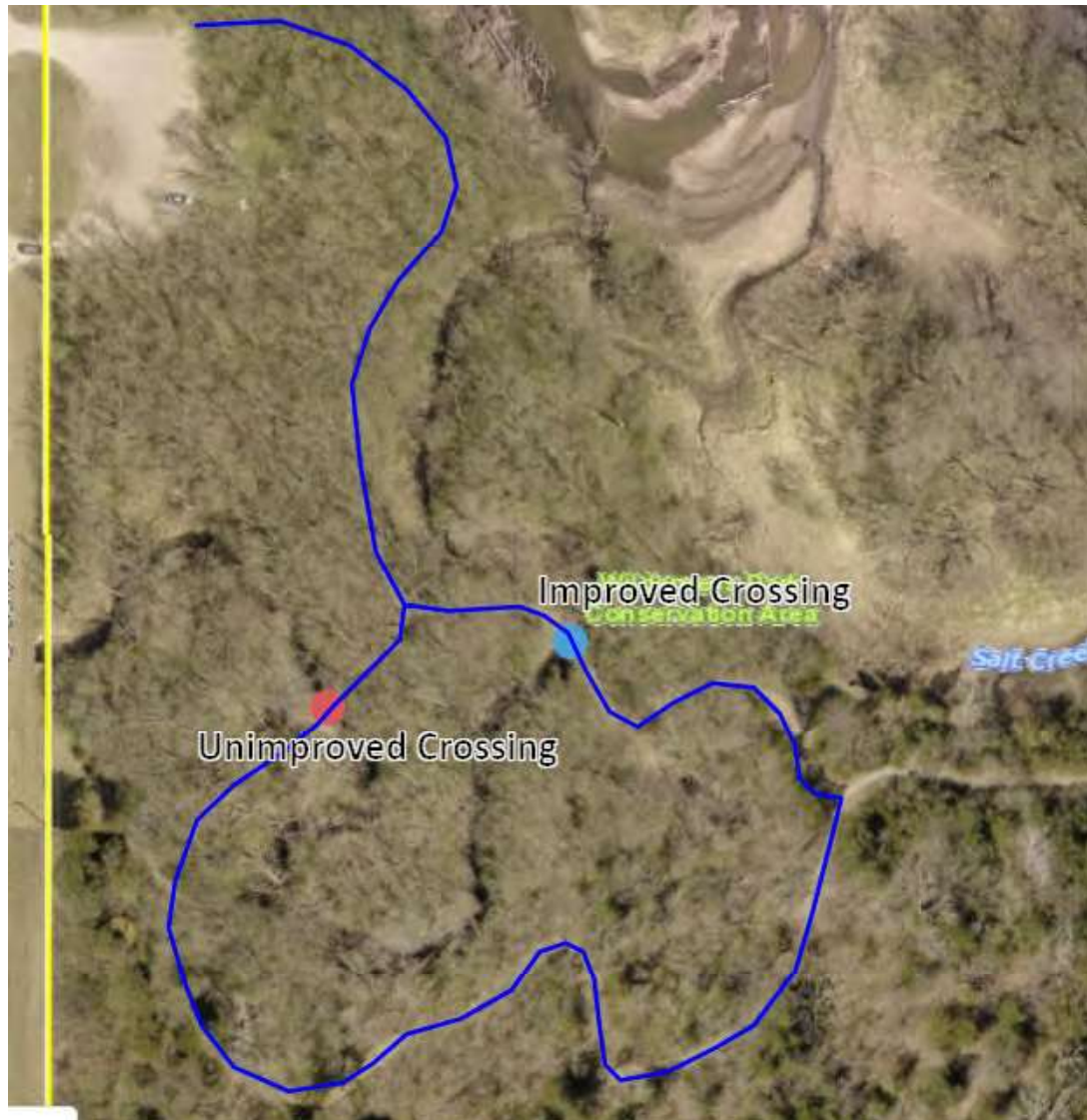
Total Estimated Cost: \$35,000.00  
(2020 Dollars)







### 1st Street low water crossings: Rehabilitate existing crossings



There are currently two low water crossing south of the 1st Street Trailhead; one that has been recently improved and one that has not. A single trail leads from the parking lot to a fork just before the low-water crossings and then the two trails reconverge at a point east of the two crossings. This project would improve the second crossing in a similar manner and improve the approaches to both crossings.

Total Estimated Total: \$8,000.00 (2020 Dollars)

### Before and After of improved 1st Street low water crossing



Before



After



Before



After

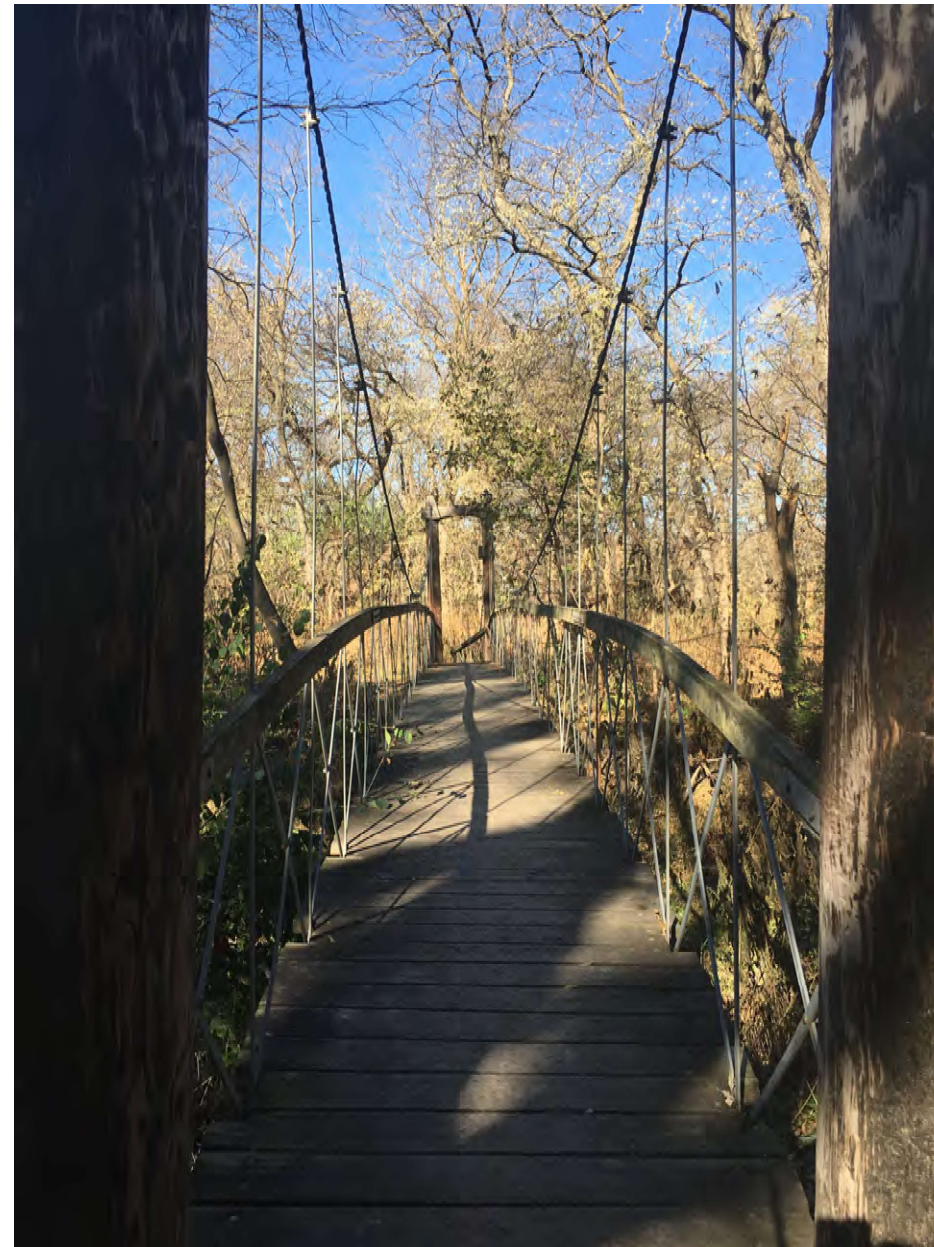




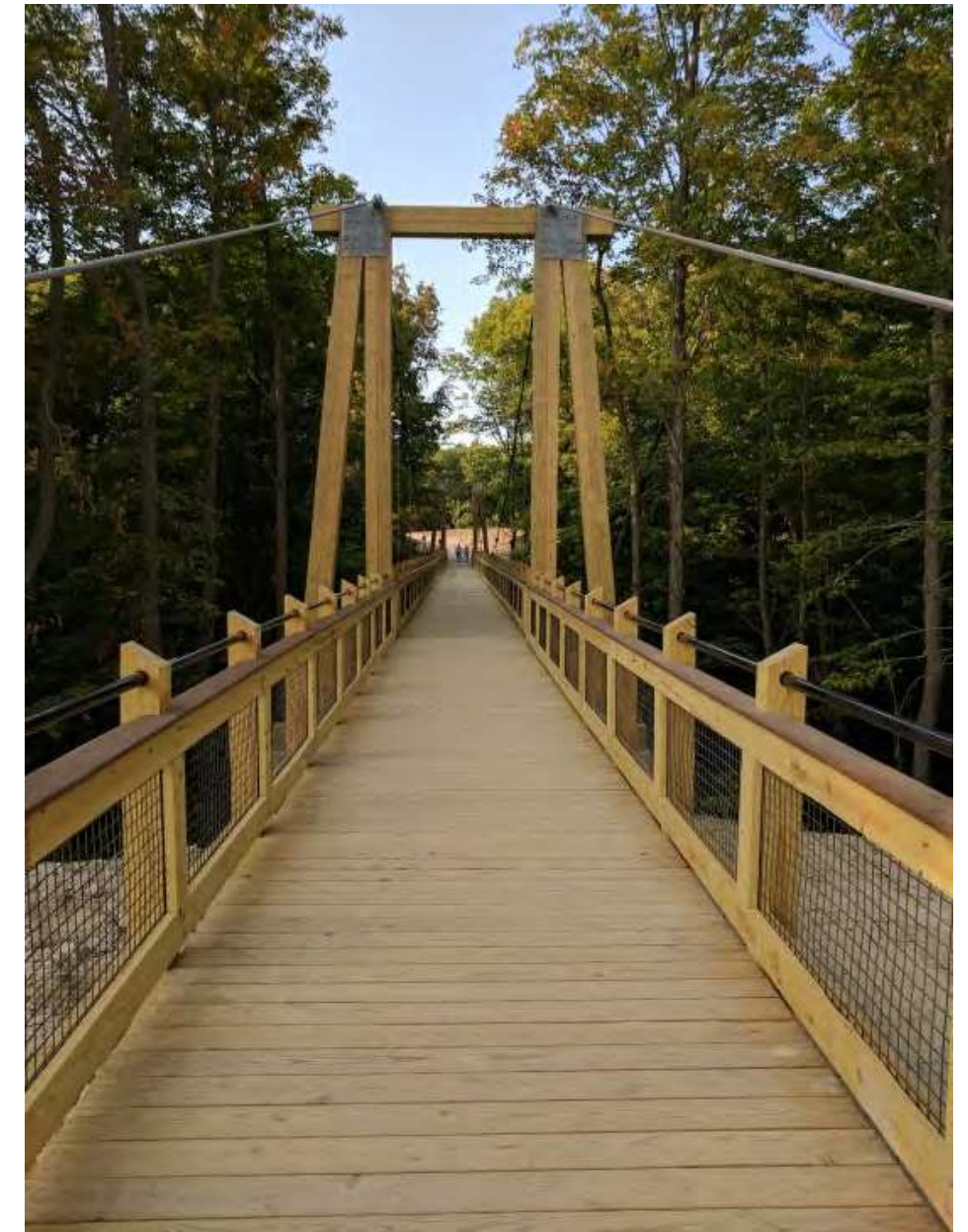


### Old Cheney Suspension Bridge:

The suspension bridge located just south of the trailhead on Old Cheney Road is beginning to show signs of age. Regular inspections are conducted to insure it is still safe, but plans should be made for its eventual replacement. This project would replace the suspension bridge with a design that respects the character of the old suspension bridge, but meets current safety standards.

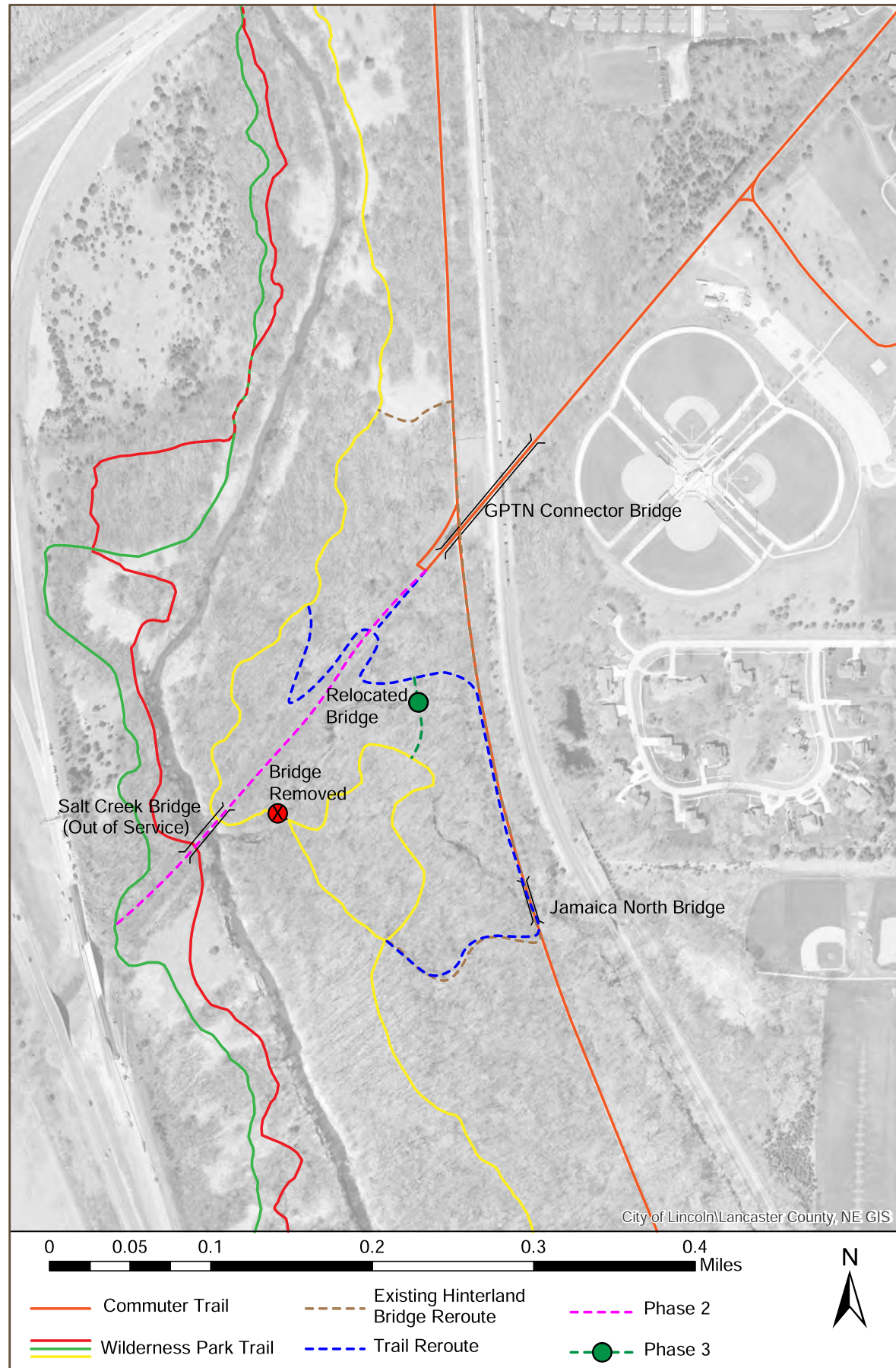


Existing Old Cheney Suspension Bridge



Replace with pedestrian bridge that reflects the character of the current bridge.  
Estimated Cost: \$425,000 (2020 Dollars)





#### Rock Island/ GPTN Connector

In 2019 a bridge just south of the old Rock Island RR embankment failed and was removed. The stream channel at this site is showing signs of instability which make this a difficult location for a replacement. In 2020 the new GPTN Connector bridge was completed, creating a new entry point into Wilderness Park which lead to a dramatic increase in use of this area. The following projects would address connectivity both north/south and east/west in this area. These could be completed in phases as funding is available or concurrently in a single project.

#### Trail Reroute

Create ramps onto the Rock Island embankment, avoiding pinch point along streambank. Open railing at ramp from GPTN Connector to allow access to the ramp crossing. Continue to join Jamaica North for crossing tributary, but this would shorten distance on Jamaica North. Estimated Total: \$5,000.00 (2020 Dollars)

#### Salt Creek Bridge

Continue trail along Rock Island embankment to bridge over Salt Creek. Rehab bridge with railing and decking if needed. This will connect the east and west sides of the park. Estimated Total: \$275,000.00 (2020 Dollars)

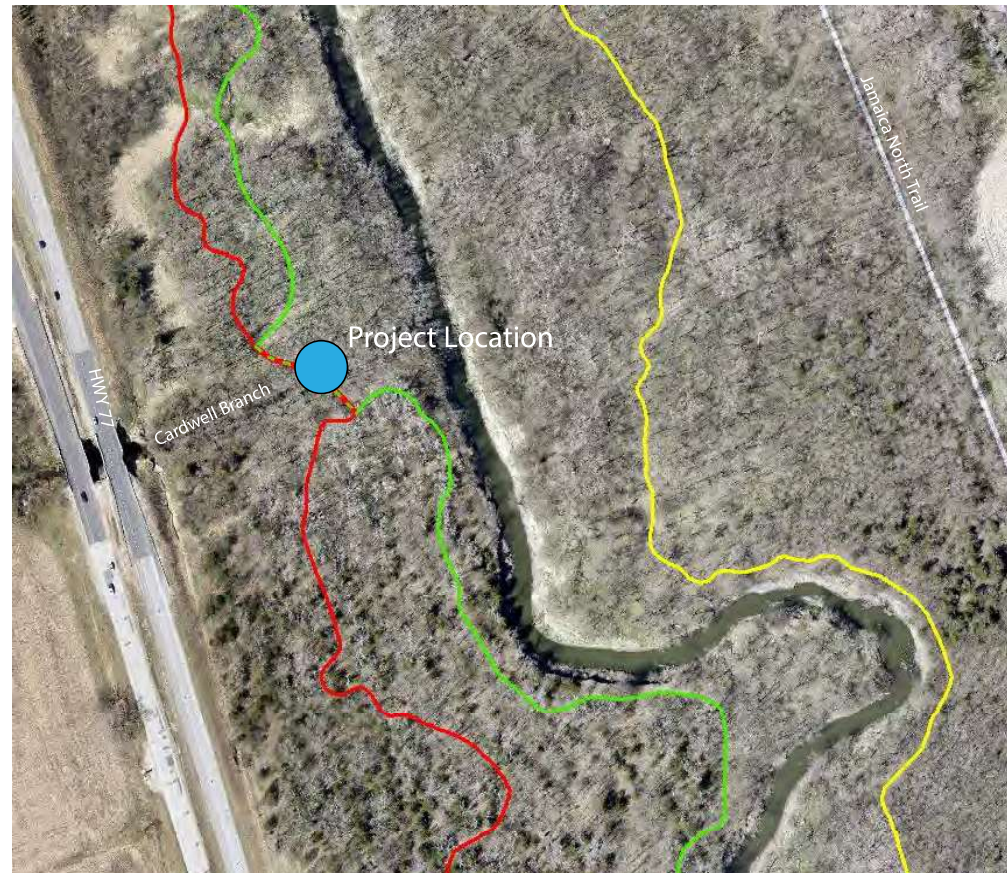
#### Hinterland Bridge

Relocate bridge that was removed to a point upstream where stream banks are more stable. This will reconnect Wilderness Park trails to remain within the park. Estimated Total: \$300,000.00 (2020 Dollars)

Total Estimated Cost: \$580,000.00 (2020 Dollars)










There is currently a low water crossing on Cardwell Branch, approximately ½ mile south of Warlick Blvd. Rock in the bottom of the creek crossing frequently washes out and the approach ramps are steep and prone to erosion. This project would install culverts in Cardwell branch to allow for crossing of trail users and maintenance equipment and reduce erosion issues along approaches.

Total Estimated Cost - \$125,000 (2020 Dollars)







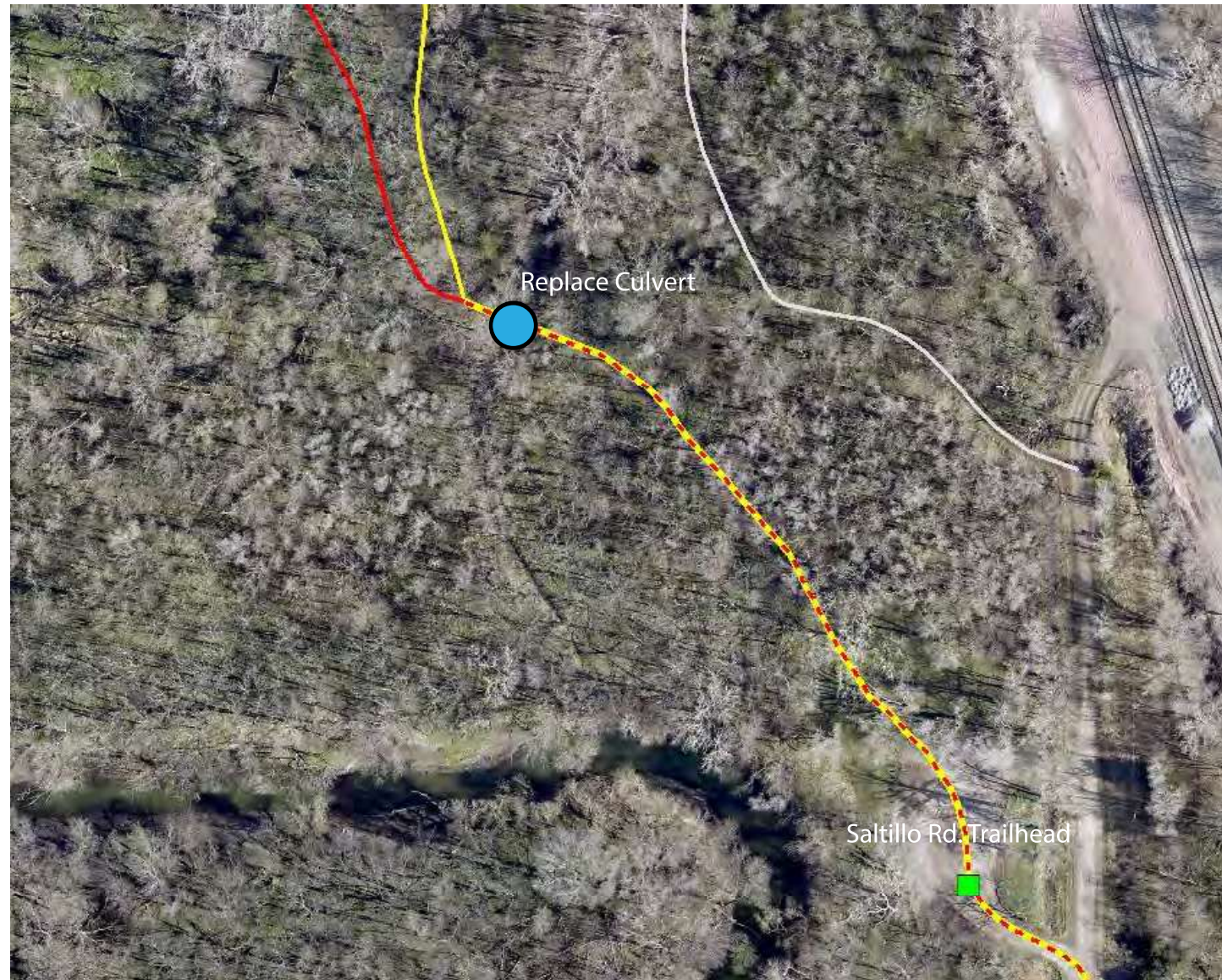
-  New Bridge
-  Current Trail
-  Old Trail in HWY 77 ROW

This project will connect two trails that were formerly connected by accessing HWY 77 ROW, crossing a culvert, then continuing back into the park. The old section of trail was recently removed by order of NDOT, leaving a dead end loop. The City of Lincoln recently purchased the bridge pictured on the right and with some engineering, could be placed over the tributary to connect the two trails again.

Total Estimated Cost: \$150,000.00 (2020 Dollars)







This project will replace a failed culvert just NW of the Saltillo Rd. Trailhead, establishing better drainage.

Estimated Cost: \$15,000.00 (2020 dollars)

Typical Culvert Detail

