

# Boards & Commissions

## Urban Design Committee Agenda

### NOTICE

Notice is hereby given that the Urban Design Committee will hold a meeting on **Tuesday, March 3, 2015 at 3:00 p.m.** in the County-City Building, 555 S. 10th Street, Lincoln, Nebraska, in Room 210 on the 2<sup>nd</sup> Floor. For more information, please contact the Lincoln City/Lancaster County Planning Department at 402-441-7491.

### AGENDA

**MARCH 3, 2015**

\* [Memo from Ed Zimmer](#)

1. Adoption of meeting record of UDC meeting of [February 3, 2015](#).
2. 11th & N bus stop improvements (StarTran)
3. Advisory review of [Robber's Cave](#) redevelopment project (Urban Development)
4. L Street vacation, 8th, 9th (Color Court Block parking improvement)
5. [Improvements of alley](#) between N. 16th and N. 17th Streets, in the block bounded north and south by Q and R Streets (Urban Development, etc)
6. Misc.

TO: Urban Design Committee

FROM: Ed Zimmer

RE: Agenda of March 3, 2015

DATE: February 25, 2015

The City is requesting UDC's advice on several projects.

**Item #2: 11<sup>th</sup> & N Bus stop**

StarTran has removed the chain link fence at the 11<sup>th</sup> & N bus stop and has several other improvements under consideration, on which UDC input is requested.

**Item #3: Redevelopment project at Robber's Cave**

Blue Blood Brewery has requested TIF assistance with a redevelopment project on the Robber's Cave site at 3235 S. 10<sup>th</sup> St., planning a building above and reopening of the Cave. A site plan is enclosed.



**Item #4: L St. Vacation/Color Court Parking improvement**

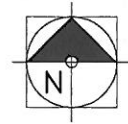
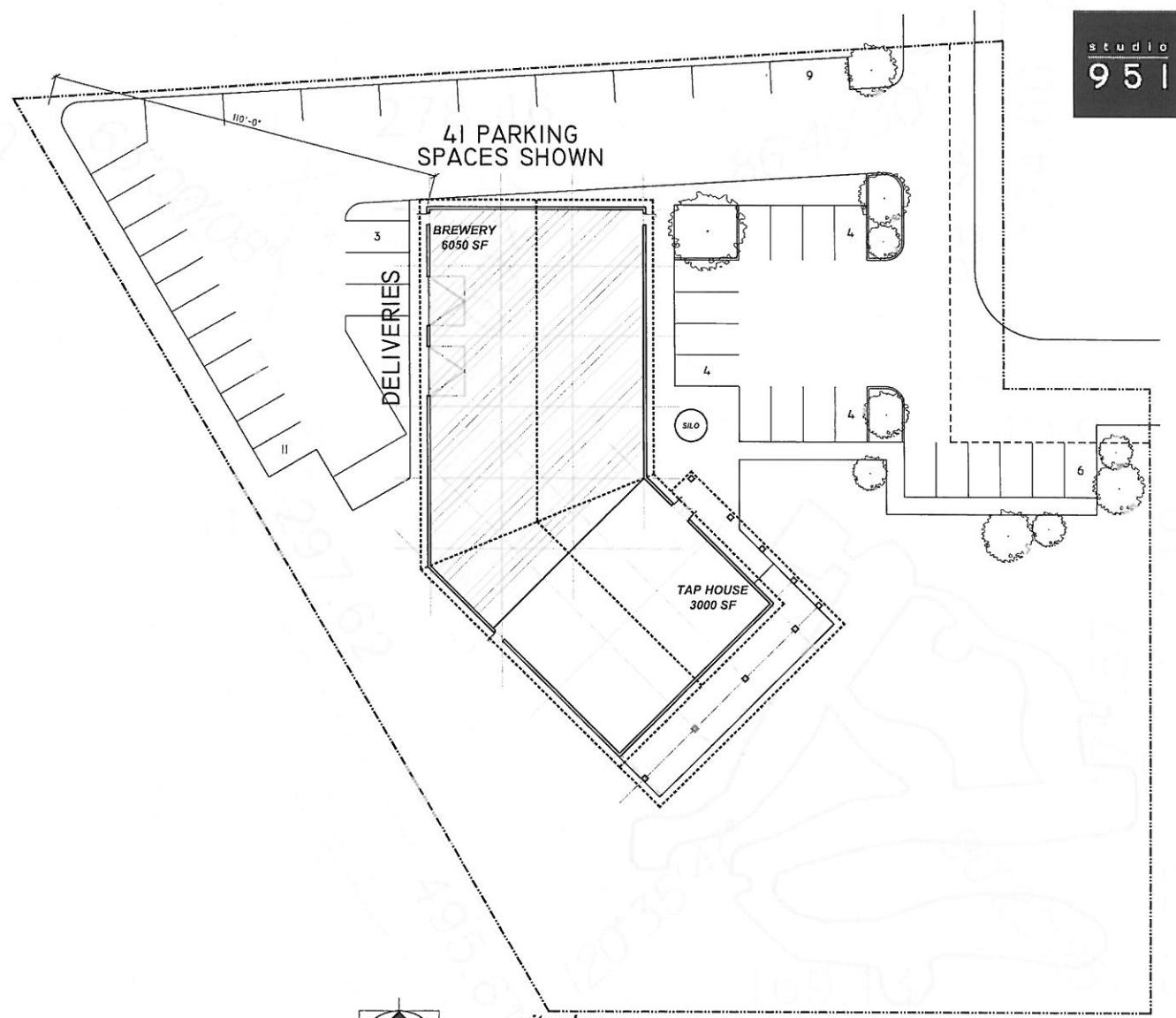
Last month the Committee reviewed streetscape improvements for the west side of 9<sup>th</sup> St. between L and M Streets. A related effort in completing redevelopment work on that Color Court Block involves improving parking on the south portion, where a stub of L Street remains adjacent to the Rosa Park Way on-ramp. Plans including vacating the street as right-of-way, retaining it in public ownership, and combining it with privately owned parcels to increase parking.

**Item #5: Improvements of “St. Thomas alley”**

As the St. Thomas Catholic Church nears completion at the corner of 16<sup>th</sup> and Q Streets, an associated redevelopment project would upgrade the east-west alley north of the church, as well as providing for buried utility lines in the alley west between 16<sup>th</sup> St. and Centennial Mall. Plans are attached.

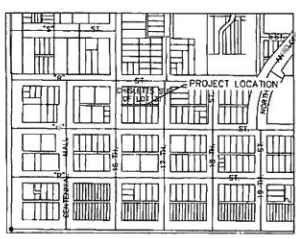
F:\Boards\UDC\REPORTS\2015\03March\030315Memo.docx

#3



site plan  
1" = 30'-0"

Item #5

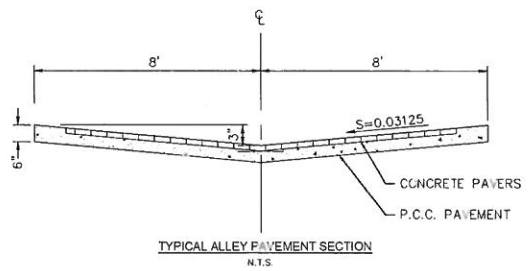


LOCATION MAP  
NOT TO SCALE

**UTILITY CONTACTS**  
 LINCOLN WASTE WATER - (402)441-7711  
 LINCOLN ELECTRIC SYSTEM - (402)487-7623  
 BLACK HILLS ENERGY - (402)437-1715  
 WINDSTREAM COMMUNICATIONS - (402)436-5691  
 TIME WARNER - (402)421-0330  
 LINCOLN WATER SYSTEM - (402)441-7571

**PRIVATE PAVING NOTES**

- FOR DETAILS OF COMBINED CURB AND GUTTER, SEE LINCOLN STANDARD PLAN - 651.
- FOR DETAILS OF PAVEMENT UNDER FINISH, SEE LINCOLN STANDARD PLAN - 660.
- FOR DETAILS OF PAVEMENT CONSTRUCTION, SEE STANDARD SPECIFICATION, CHAPTER 3, 2011 EDITION, CITY OF LINCOLN, NEBRASKA. ALL STANDARD SPECIFICATIONS AND AGENCIA SHALL APPLY.
- FOR DETAILS OF PAVEMENT MARKINGS, SEE STANDARD SPECIFICATION, CHAPTER 13, 2011 EDITION, CITY OF LINCOLN, NEBRASKA. ALL STANDARD SPECIFICATIONS AND AGENCIA SHALL APPLY.
- THE CONTRACTOR SHALL VERIFY THE LOCATION AND ELEVATION OF THE EXISTING PAVEMENT.
- THE CONTRACTOR SHALL REFERENCE THE GEOTECHNICAL REPORT AND CONSTRUCT PAVEMENT ACCORDING TO THE GEOTECHNICAL ENGINEER'S SPECIFICATIONS.
- CONTRACTOR SHALL FOLLOW GEOTECHNICAL REPORT RECOMMENDATIONS FOR SUBGRADE PREPARATION.
- THE CONTRACTOR SHALL COORDINATE ALL PAVEMENT TESTING.
- THE CONTRACTOR SHALL REFERENCE THE STRIPPING DETAIL FOR PAVEMENT MARKINGS.
- THE PAVING CONTRACTOR SHALL ADJUST ALL MANHOLES, VALVES, INLETS, AND CLEAN-OUTS TO GRADE. THE PAVING CONTRACTOR IS RESPONSIBLE FOR SETTING INLET TOPS.
- THE PAVING CONTRACTOR SHALL PLACE TRAFFIC RATED CAPS ON ALL CLEAN-OUTS WITHIN PAVED AREAS.
- CONTRACTOR SHALL STRIPE ALL PARKING LOTS AS SHOWN. PARKING STALL STRIPPING SHALL BE 4" WHITE MARKINGS.
- CONTRACTOR SHALL COMPLETE ALL NECESSARY PERMITS AND INSPECTIONS PRIOR TO CONSTRUCTION.
- ALL DIMENSIONS ARE TO BACK OF CURB UNLESS OTHERWISE NOTED.
- ALL COORDINATE POINTS ARE TO BACK OF CURB UNLESS SPECIFIED OTHERWISE.
- ALL ISLANDS SHALL BE CONSTRUCTED AS CONCRETE CURB AND GUTTER.
- ALL HANDICAPPED STALLS TO BE PAINTED AND SIGNPOST WITH SIGN INSTALLED.
- ALL ISLANDS AND BACKBAY AREAS SHALL BE BACKFILLED WITH TOPSOIL.
- ALL CURB CUTS AND RAMPS SHALL BE IN COMPLIANCE WITH THE AMERICANS WITH DISABILITIES ACT (FEDERAL REGISTER/PART 38 NO. 144/RULES AND REGULATIONS).
- MAINTAIN 2% CROSS SLOPE ON SIDEWALKS UNLESS OTHERWISE NOTED. ALL SIDEWALKS TO BE 4" P.C.C. PAVEMENT.

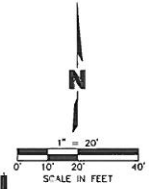


**CONTROL POINTS**

PNT.	NORTHING	EASTING	ELEV.	DESC.
201	208225.56	161589.79		3/4" REBAR
470	206342.07	161499.25		3/4" REBAR
401	209199.87	161538.45		1" PIPE
402	206342.40	161439.34		1" PIPE
404	205200.40	161438.41		1/2" REBAR

**BENCHMARKS**

- TAIL OF ARROW ON FIRE HYDRANT, NE CORNER N. 16TH STREET AND 'R' STREET. ELEV.=1175.77 (N.A.S.D. 1988)
- TAIL OF ARROW ON FIRE HYDRANT, SW CORNER N. 17TH STREET AND 'R' STREET. ELEV.=1172.48 (N.A.S.D. 1988)



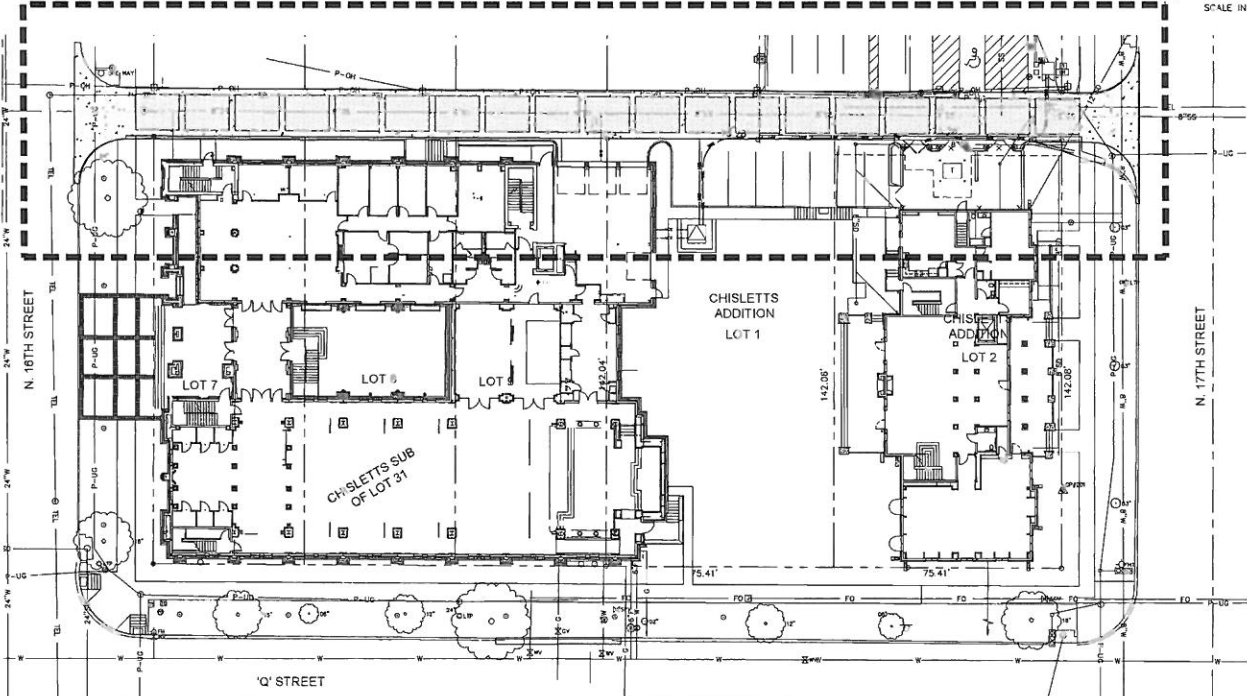
**SCHEDULE OF APPROXIMATE QUANTITIES**

ITEM	UNIT	QUANTITY
MOBILIZATION	EA	1
TRAFFIC CONTROL	EA	1
8" CONCRETE	SF	290
6" CONCRETE	SF	366
SAW/BLT. TYPE A	LF	726
REMOVE EXISTING PAVEMENT	SY	655
5" THICK CONCRETE SIDEWALK	SF	100
ADJUST MANHOLE TO GRADE, COMPLETE	EA	1
ALLEY PAVERS	SF	3,292

**LEGEND**

- AIR CONDITIONING UNIT
- ATM MACHINE
- BASEKETBALL HOOP
- BOLLARD
- BUSH
- COLUMN
- CURB INLET
- CURB STOP
- CONTROL POINT/BENCHMARK
- DECIDUOUS TREE
- ELECTRIC OUTLET
- ELECTRIC METER
- ELECTRIC MANHOLE
- FIBER OPTIC MANHOLE
- FIRE HYDRANT
- FOUND PROPERTY CORNER
- GAS VALVE
- GRATE INLET
- JUNCTION BOX
- LIGHT POLE
- POWER POLE/LIGHT POLE
- PARKING METER
- POWER POLE
- SANITARY TOWER CLEANOUT
- SET PROPERTY CORNER SIGN
- TELEPHONE MANHOLE
- SPEAKER BOX
- SPRINKLER CONTROL VALVE
- TRAFFIC CONTROL BOX
- TRAFFIC SIGNAL BOX
- TRAFFIC SIGNAL W/MAST ARM
- WATER VALVE
- WATER MANHOLE
- WATER METER
- YARD LIGHT
- VENT PIPE
- CONTOUR LINE
- CENTER LINE
- PROPERTY LINE
- SANITARY SEWER LINE
- STORM SEWER LINE
- WATER LINE
- UNDERGROUND GAS MAIN
- OVERHEAD POWER
- UNDERGROUND POWER
- UNDERGROUND TELEPHONE LINE
- UNDERGROUND FIBER OPTIC LINE
- BUSHES

SHEET 2 OF 2



DWG: F:\Projects\11-2012\11-2012-DWP\final\11-2012-DWP\_ALEXY WAY.dwg  
 DATE: Feb 10, 2015 11:08am  
 USER: s1116raus  
 110312\_PVT-Floor-1st.dwg  
 110312\_Plan-1st.dwg  
 To: 0.msh...; Thomas08713-FloorPlan-Final.dwg  
 110312\_STOPO\_ADD  
 The wallfield

110312\_Plan-1st.dwg  
 PLO: 02/10/15  
 110312\_Plan-1st.dwg  
 110312\_Plan-1st.dwg

PROGRESS PRINT

REVISIONS

REV	NO	DATE	DESCRIPTION

PAVING COVER SHEET

2015

ST. THOMAS ALLEY RECONSTRUCTION

LINCOLN, NEBRASKA

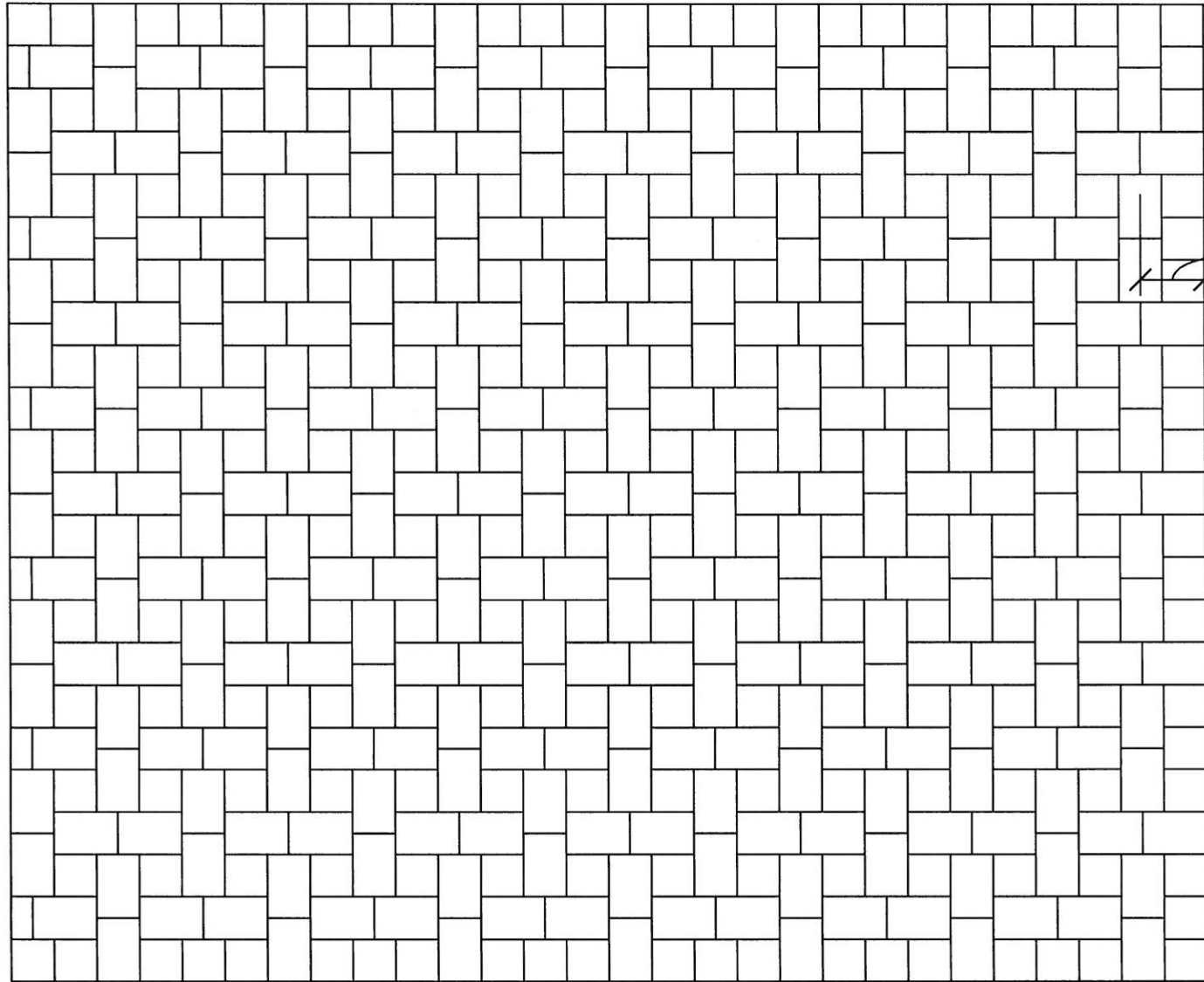
SHEET 1 of 2

Checked by: [ ]  
 Approved by: [ ]  
 Project No.: 110312  
 Date: 2/10/15

Diggers Hotline Of Nebraska

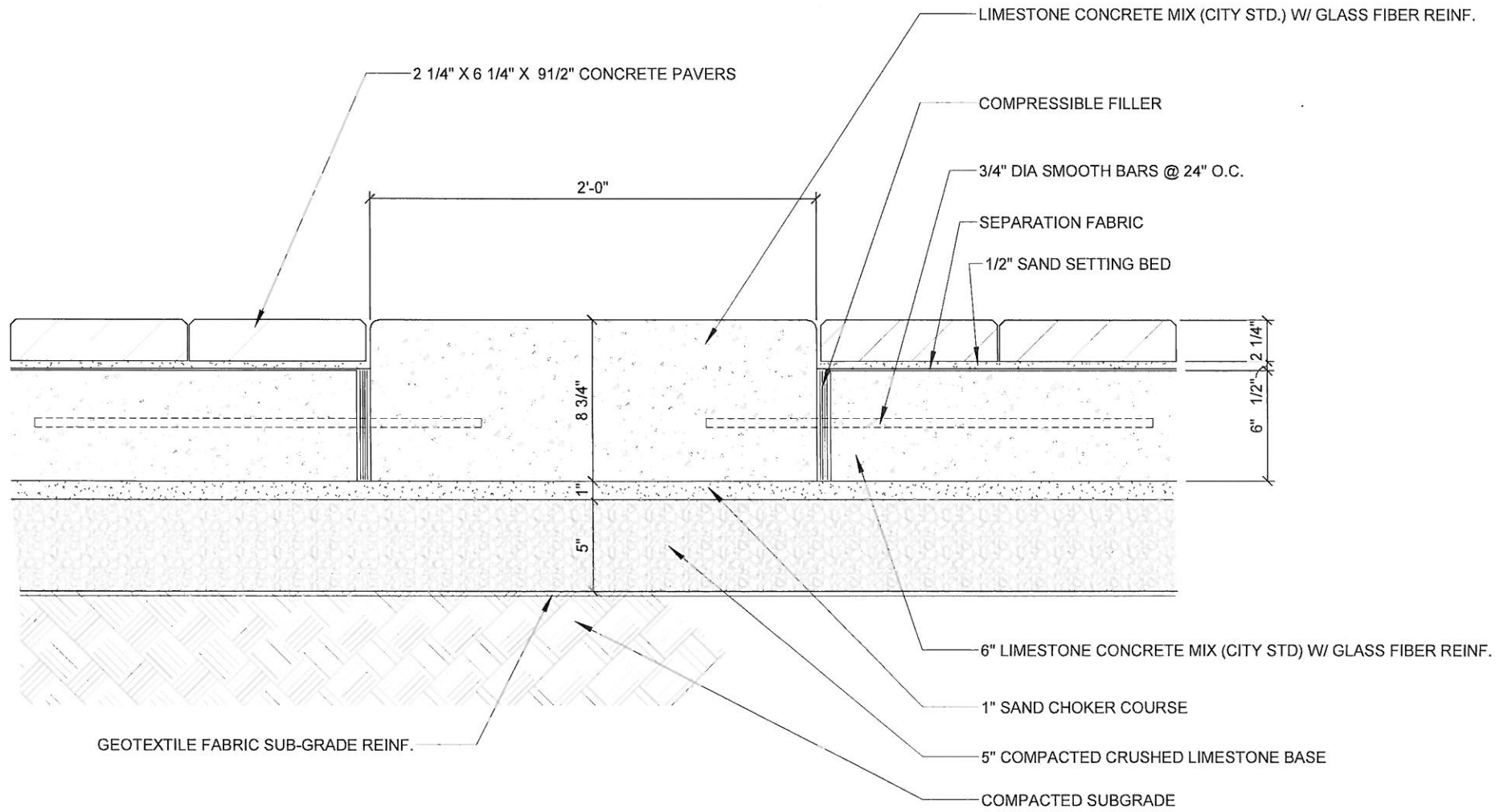
Statewide (700) 331-5665  
 www.diggers.com  
 Call 24/7 or 1-800-241-7868

#5  
Paver Pattern



6 3/8"  
9 1/2"

#5  
Header  
Detail



#5  
Detail

