

Boards & Commissions

Urban Design Committee Agenda

NOTICE

Notice is hereby given that the Urban Design Committee will hold a meeting on **Tuesday, July 10, 2018 at 3:00 p.m.** in the County-City Building, 555 S. 10th Street, Lincoln, Nebraska, in **Room 210** on the 2nd Floor. For more information, please contact the Lincoln City/Lancaster County Planning Department at 402-441-7491.

AGENDA

JULY 10, 2018

1. Approval of UDC meeting record of [May 1, 2018](#).

* [Memo from Stacey Hageman](#)

DISCUSS AND ADVISE

2. [Lincoln Operations Center, Phase 2](#) (Davis Design/LES) - [UDR18046](#)
3. [Traffic Signal Cabinet Wraps](#) (Public Works & Utilities) - [UDR18047](#)
4. [Capitol Parkway Banners](#) (Lied Center) - [UDR18045](#)

DISCUSSION

5. Staff Report & misc.

TO: **URBAN DESIGN COMMITTEE**

FROM: Stacey Hageman

RE: Meeting of July 10, 2018

DATE: July 2, 2018

ITEM 2: Lincoln Operations Center, Phase II



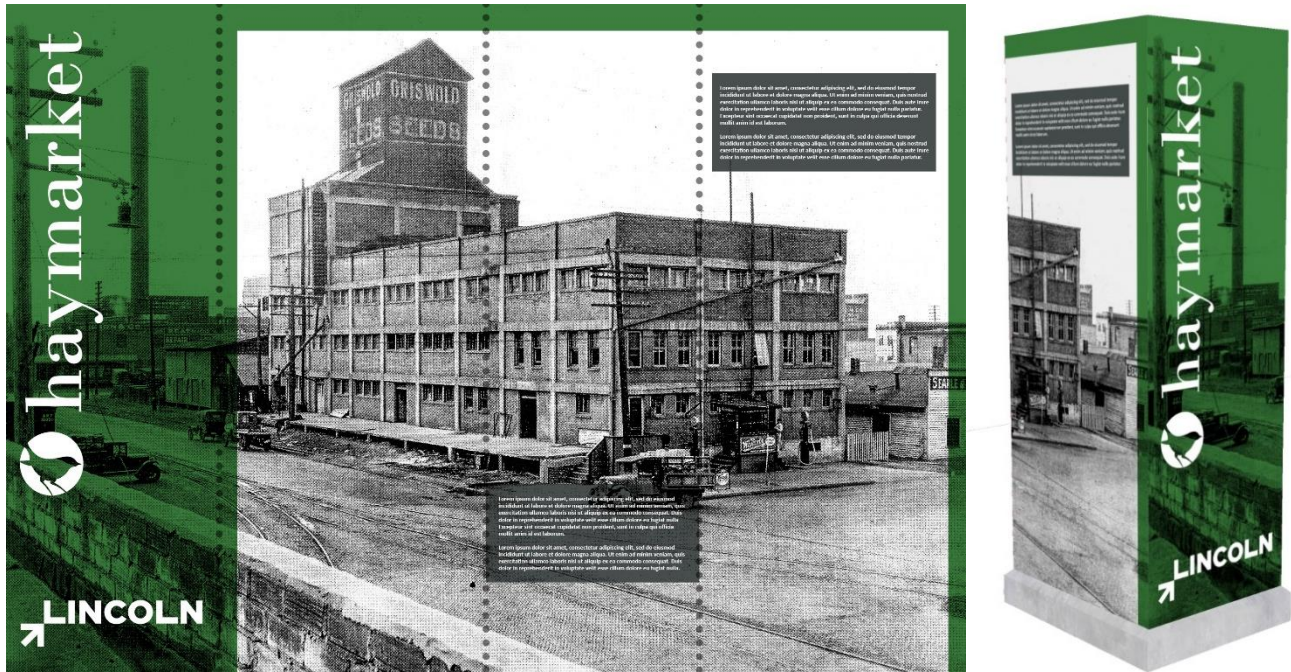
Office Building, Rendered View from the Northeast

In August 2017, the Committee reviewed plans for Phase I development of a new LES Operations Center between 91st and 98th on Rokeby Road. LES is completing construction of the Operations Center which is due to open in late 2018 or early 2019. Phase II of will include a 3-story office building, indoor line-crew training facility, and multipurpose space. This phase will also include the sale of the current downtown office building in 2018.

Your advice and recommendation is sought regarding the attached LES submittal which includes details on site and building design.

ITEM 3: Traffic Signal Cabinet Wraps

As part of a new contract for traffic signal cabinets, the City has the option to wrap the cabinets with an image or graphic. City staff has been exploring design alternatives for the wraps, which will begin being implemented later this year as cabinets are replaced. Collin Christopher (Planning) has been working on the designs and has provided the attached project description with many examples of potential graphics. Your advice is sought on the overall layout, unifying design elements, and selected imagery.



Example Wrap Design, Site Specific Design for 8th & N Intersection

ITEM 4: Capitol Parkway Banners

The Lied Center for Performing Arts would like to install 12 street light banners along Capitol Parkway between Randolph and S. 32nd Streets. They're asking to attach banner arms to existing street lights that will hold 2.5-foot by 6-foot banners to promote seasonal events at Lied Center.

Your advice and recommendation is sought on this proposal. A map showing proposed locations is attached along with a mock-up of the poles, and a detailed description provided by the Lied Center.



Example Banner, View from Capitol Parkway

City of Lincoln

Urban Design Review Committee

July 10, 2018



Lincoln Electric System
Lincoln Operations Center
Phase II









LES Operations Center Office Building – View from the Northeast



NORTH ELEVATION



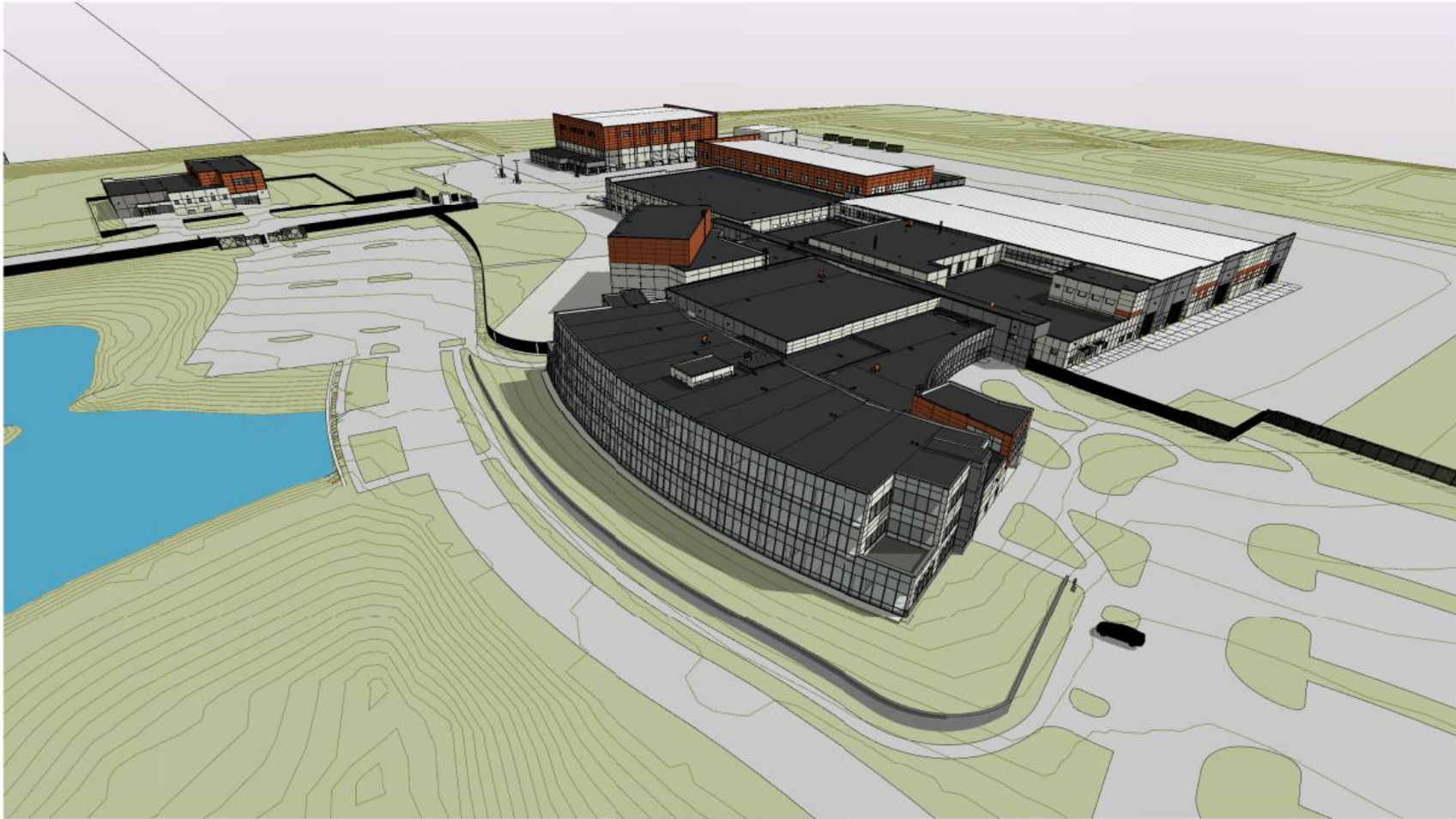
WEST ELEVATION



SOUTH ELEVATION



EAST ELEVATION



LES Operations Center - Aerial View From Northwest



LES Operations Center - Aerial View From Northeast



LES Operations Center - Perspective View From Northwest



LES Operations Center - Perspective View From West



LES Operations Center - Perspective View From Southwest



LES Operations Center - Perspective View From East



LES Operations Center Office Building – Rendered View from the Northeast



LES Operations Center Office Building – Rendered View from the Northwest



LES Operations Center Office Building – Rendered View from the West



LES Operations Center Office Building – Approach Sign



Wetlands



Feature Pond



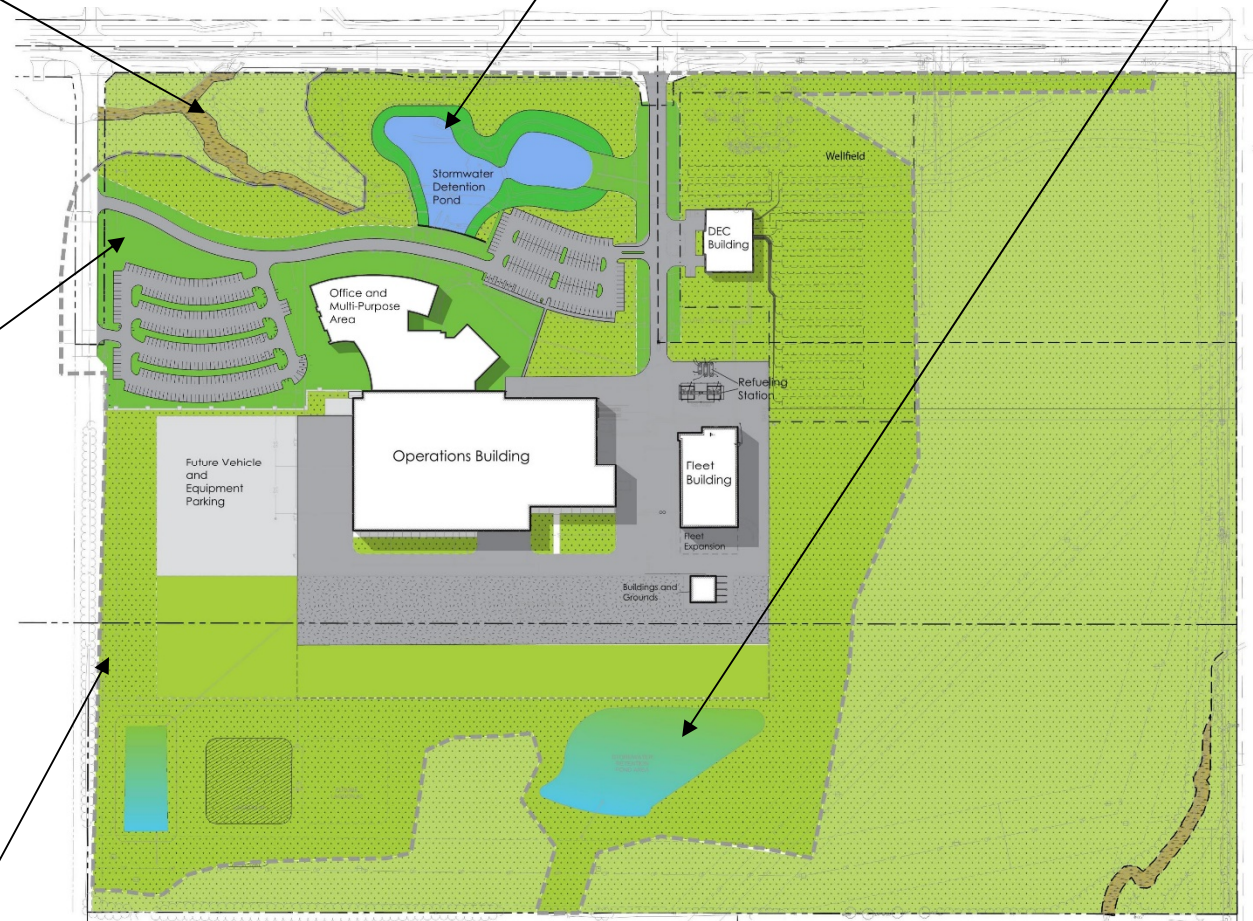
Stormwater Pond



Enhanced Landscaping and Fescue Grass



Native Grass



Lincoln Operations Center – Phase II



- 1 PLANTING CHARACTER
- 2 PLANTING CHARACTER WITH GRASS STRIP
- 3 LOW-GROW GRASS MIX
- 4 SHORTGRASS PRAIRIE MIX
- 5 SOLAR PICNIC TABLES
- 6 SITE SHELTERS
- 7 WETLANDS
- 8 SKYLINE HONEY LOCUST
- 9 SCARLET OAK
- 10 AUTUMN BRILLIANCE SERVICEBERRY

Landscaping Site Plan

SEED MIXES



PLANTING CHARACTER



PLANTING CHARACTER WITH GRASS STRIP



LOW-GROW GRASS MIX



SHORTGRASS PRAIRIE MIX

SITE AMENITIES



SOLAR PICNIC TABLE



SITE SHELTERS



WETLANDS

TREES



SKYLINE HONEY LOCUST



SCARLET OAK



AUTUMN BRILLIANCE SERVICEBERRY

Landscaping Materials



Landscape Rendering



Landscape Rendering



Landscape Rendering

TRAFFIC SIGNAL CABINET WRAPS

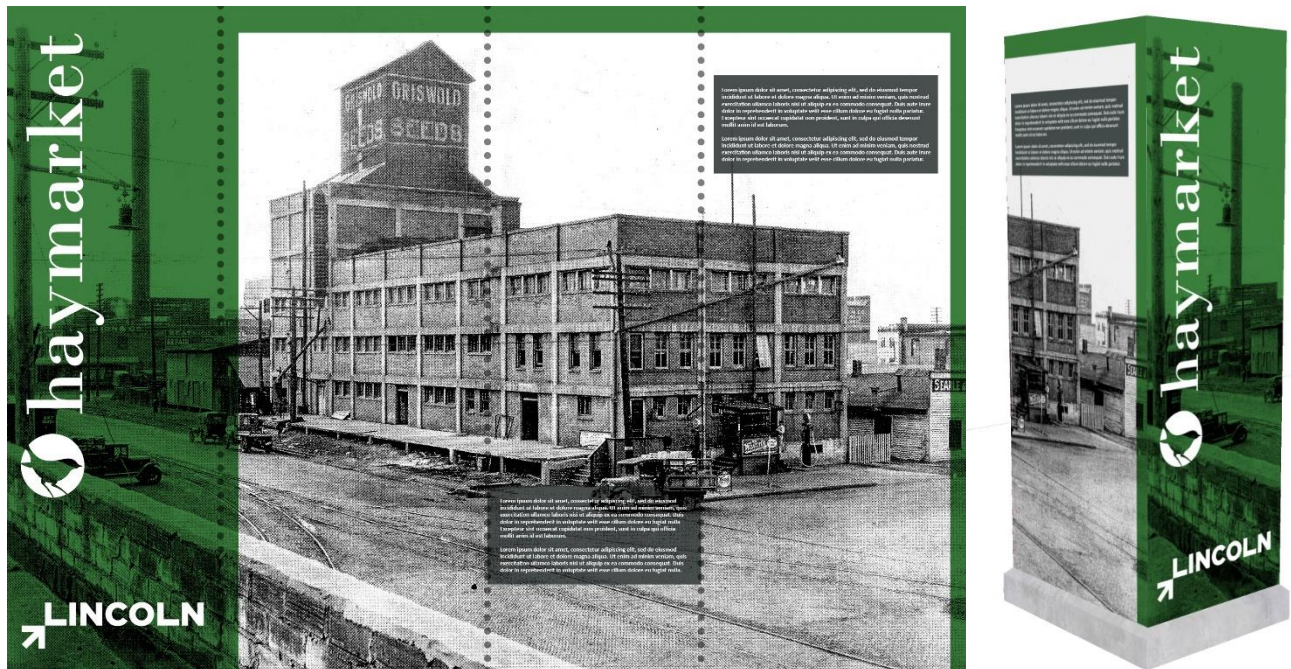
As part of a new contract for traffic signal cabinets, Public Works has the option of wrapping the cabinets with an image or graphic. They have asked city staff to explore alternatives for the design of the wraps, which will begin to be implemented later this year, as cabinets get replaced. Staff is currently attempting to tackle two issues related to the wraps:

- 1) Creating a family of designs for the wraps that could be installed in a variety of different settings.
- 2) Establishing a master plan that identifies locations and priorities for where wraps should be applied citywide.

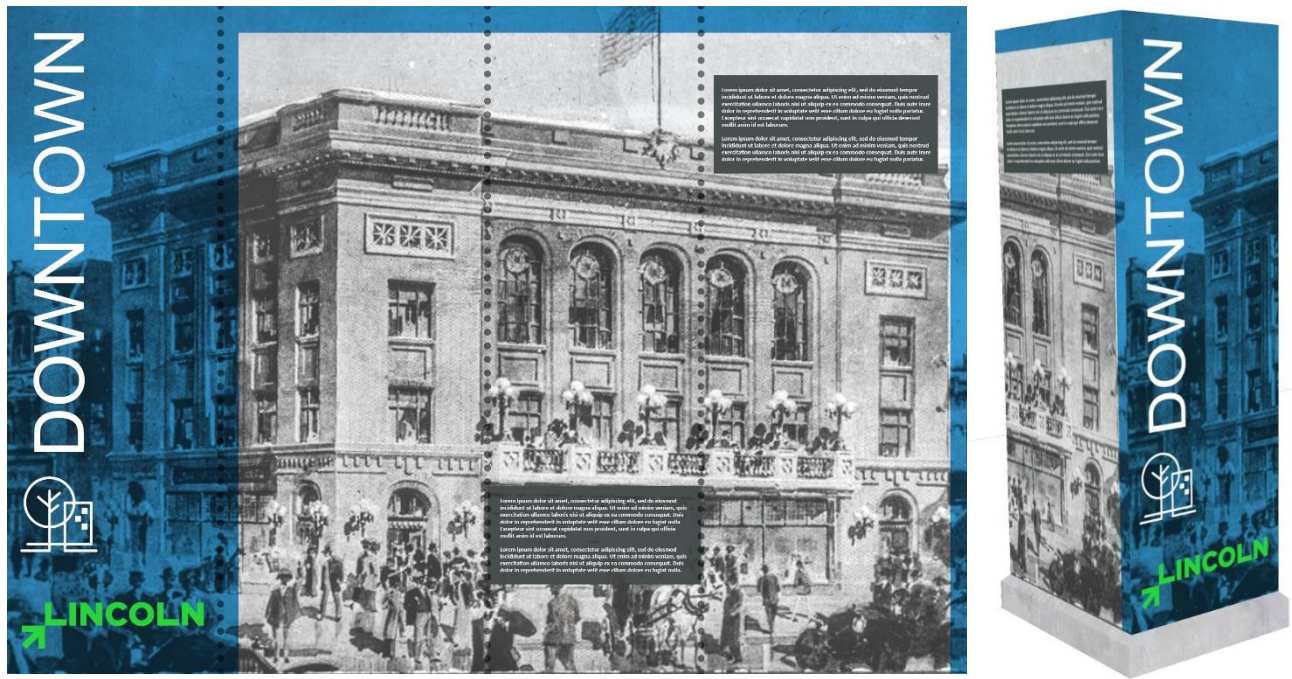
While the second issue is still being explored, staff has developed a preferred graphic framework for the wraps. Based on conversations with Public Works staff, it is anticipated that the initial batch of wraps will primarily be implemented in downtown and downtown-adjacent areas. However, that may change over time, so it is important to consider how a wrap located downtown might differ from one located in another part of the city. With all this in mind, the staff has developed a conceptual framework for the design of the wraps that can be organized into three different groups or types. What follows is a summary of each:

Site-Specific Wrap Designs

Site-specific wraps are those with imagery specific to the location they are located. Typically, this would include historic photography or graphics, as well as bars of informational text that would help to explain the significance of the imagery. The colorways of the wraps would be coordinated with the district they are in. For instance, wraps located in the Haymarket would have a green colorway that matches the green of the Historic Haymarket branding.



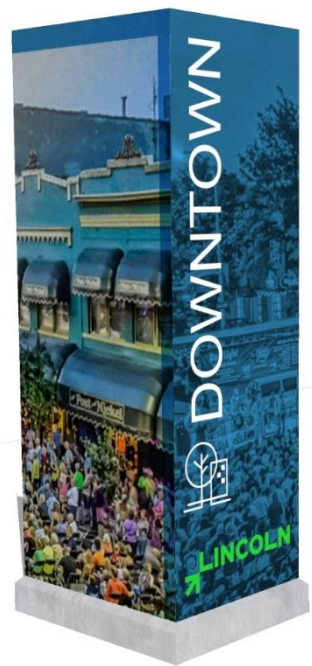
This graphic would be for a cabinet located at 8th and N.



This graphic would be for a wrap located at 11th and P.

District-Specific Wrap Designs

District-specific wraps are those with imagery specific to the district they are located in. This could include historic photography, but might also include more recent imagery. In general, the imagery selected for these designs will be more representative of the larger district and less site-specific. For example, a photograph of the Farmers’ Market would fit well on a cabinet in the Haymarket, but doesn’t feel like it would have to be tied to a specific intersection per se. Like the site-specific wraps, the district-specific wraps would include coordinated colorways. While the Haymarket wraps would have a green or charcoal colorway, the rest of downtown could use a blue colorway that matches DLA’s branding. Additionally, there may be an opportunity for subdistrict colorways for unique areas or streets within downtown. P Street and Centennial Mall are potential examples of subdistricts that could have their own colorway.





Generic Wrap Designs

The final category of wraps is primarily for those which might extend beyond downtown. The thought is that there would be a group of generic wraps that could be applied anywhere in the city. Imagery would typically consist of photography from iconic places or landscapes in Lincoln, such as Centennial Mall/the Capitol Building, Sunken Gardens and views of the tallgrass prairie.





Lied Center for Performing Arts

Urban Design Committee Proposal: Street Light Banners

Our vision at the Lied is to transform the lives of the people of Nebraska through the performing arts. Clearly, the Urban Department is very attentive to the importance of community space. We believe that our project is consistent with your mission to create aesthetically pleasing designs for the public and promote wholesome activities for the community.

We would like to place 12 street light banners, 6 on each side, on the street lights on Capitol Parkway in between Randolph St. and South 32nd St.

The banners will be 2.5'x6' with banner arms. The banner arm featured is used for both the top and the bottom of the banner. It is a 32" long arm and is made of Grey Airow Fiberglass.

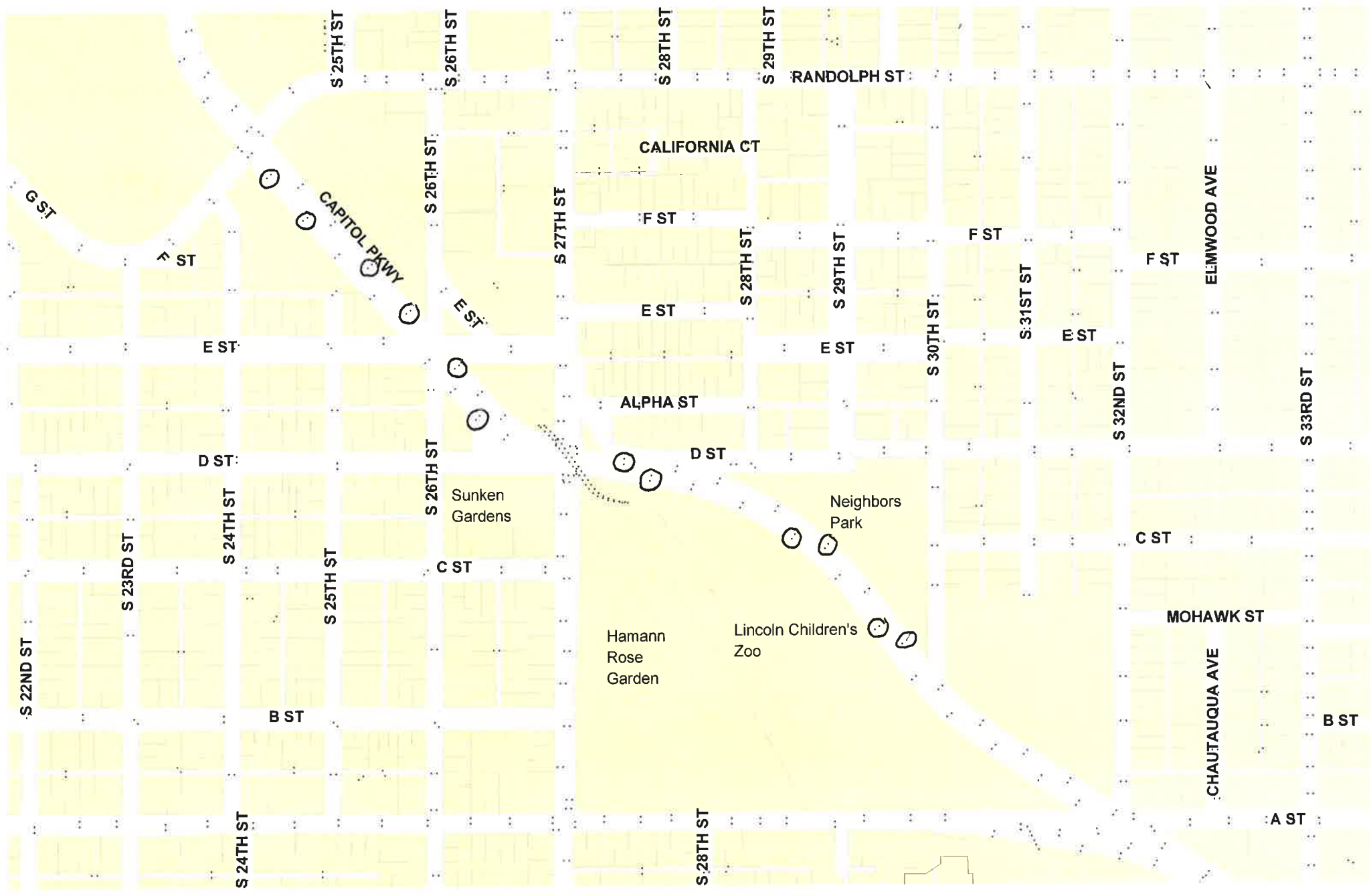
The banners will promote the season at the Lied Center, featuring different shows and artists with the performance dates.

As stated in the permit, we will provide the equipment and the means for the installation of the banners.

No trees or other surrounding vegetation will be affected.

The surrounding area of the banners is occupied by the Lincoln Children's Zoo and the Sunken Gardens. The banners will not block any view or advertising for the Zoo and the Gardens.

Attached is a map of the locations stated with the desired street lights circled, a mock-up of the banner and street view, and an example of the banner arms.



S 22ND ST

S 23RD ST

S 24TH ST

S 25TH ST

S 26TH ST

S 26TH ST

S 27TH ST

S 28TH ST

S 28TH ST

S 29TH ST

S 28TH ST

S 29TH ST

S 30TH ST

S 31ST ST

S 32ND ST

S 33RD ST

CHAUTAUQUA AVE

ELIMWOOD AVE

F ST

E ST

D ST

B ST

E ST

C ST

ALPHA ST

CALIFORNIA CT

F ST

E ST

D ST

Neighbors Park

Hamann Rose Garden

Lincoln Children's Zoo

F ST

E ST

F ST

C ST

MOHAWK ST

B ST

A ST

G ST

CAPITOL PKWY

RANDOLPH ST

