

Boards & Commissions

Urban Design Committee Agenda

NOTICE

Notice is hereby given that the Urban Design Committee will hold a meeting on **Tuesday, March 5, 2019 at 3:00 p.m.** in the County-City Building, 555 S. 10th Street, Lincoln, Nebraska, in **Room 210** on the 2nd Floor. For more information, please contact the Lincoln City/Lancaster County Planning Department at 402-441-7491.

AGENDA

MARCH 5, 2019

1. Approval of UDC meeting record of [January 8, 2019](#).

* [Memo from Stacey Hageman](#)

DISCUSS AND ADVISE

2. [48th & Leighton, Building Materials](#) (Chris Erickson/Urban Dev. Dept.) - [UDR19007](#)
3. F Street Community Center Art Station (Planning Dept.) - [UDR19008](#)

DISCUSSION

4. Staff Report & misc.

TO: **URBAN DESIGN COMMITTEE**

FROM: Stacey Hageman

RE: Meeting of March 5, 2019

DATE: February 26, 2019

ITEM 2: 48th & Leighton Redevelopment, Materials

In September 2016, UDC advised the City on the proposed 48th & Leighton redevelopment and the associated use of tax increment financing. Because of recent increases in construction and steel prices the developer is requesting a change to the building materials. The City is seeking the Committee's advice related to the durability and overall quality of proposed substitute materials.



2016 Rendering of 48th & Leighton, view from east

The attached color elevations were previously approved for this project. The developer is proposing to substitute a horizontal, wide-plank fiber cement board in place of the horizontal metal panel labeled MP-1. On the rendering, the material to be substituted is the darker gray areas on floors 2 through 4. All other materials are to remain as initially proposed.

TIF funds are expended uniquely for each project, but TIF projects are held to a higher standard overall. Regardless of how TIF is assigned, the developer is expected to build a project that matches (or exceeds) the quality of the design approved with the redevelopment agreement. In terms of building materials, the City expects materials of a higher quality that are more durable over time.

Added construction costs are not unique to this project. It is likely that similar requests favoring cementitious materials will be made. The City is seeking your advice on building materials specific to this project, and also looking for advice on how to address these requests in the future.

ITEM 3: F Street Community Center Art Station

The City of Lincoln, in partnership with Heartland Bike Share and the South of Downtown Community Development Organization, is seeking your advice on a proposal for a BikeLNK bike share station to be located at the F Street Community Center at 13th and F Streets.

The proposal is to install a new station at the F Street Community Center that incorporates artwork on the station docks and baseplates. Many other communities have created “art bikes” for use in their system, this proposal is to create an “art station.” This 10-dock station will include 10 unique baseplate designs and 10 unique dock designs.

Neighborhood school students will submit designs for the baseplates with a limited palette (4 colors) to ensure a cohesive overall design. A selection committee will be organized to select the artwork to be used. Local artists will airbrush/spray-paint the students’ designs onto the baseplates, then design artwork for the individual docks to complement each baseplate.

The City would like to get your feedback on this specific application, with consideration given for handling similar requests in the future.

\\FILSRV01\Planning\Boards\UDC\REPORTS\2019\03Mar5\March2019Memo.docx



NORTH ELEVATION
SCALE: 1/8" = 1'-0"



EAST ELEVATION
SCALE: 1/8" = 1'-0"

PRELIMINARY
NOT FOR
CONSTRUCTION

N 48TH ST & LEIGHTON AVE
LINCOLN, NE 68504

BLDG A - COLORED ELEVATIONS
UNIVERSITY PLACE

D1
10-12-15-00
09/20/2017
Revision

2:Rev10:10-12-15-00_AR_2015_Colors_elevation.dwg
10/20/17 8:45:24 AM

\\p101-121009_05_2016_Corad_elevation.rvt
2017 04/20/17 10:41 AM



WEST ELEVATION

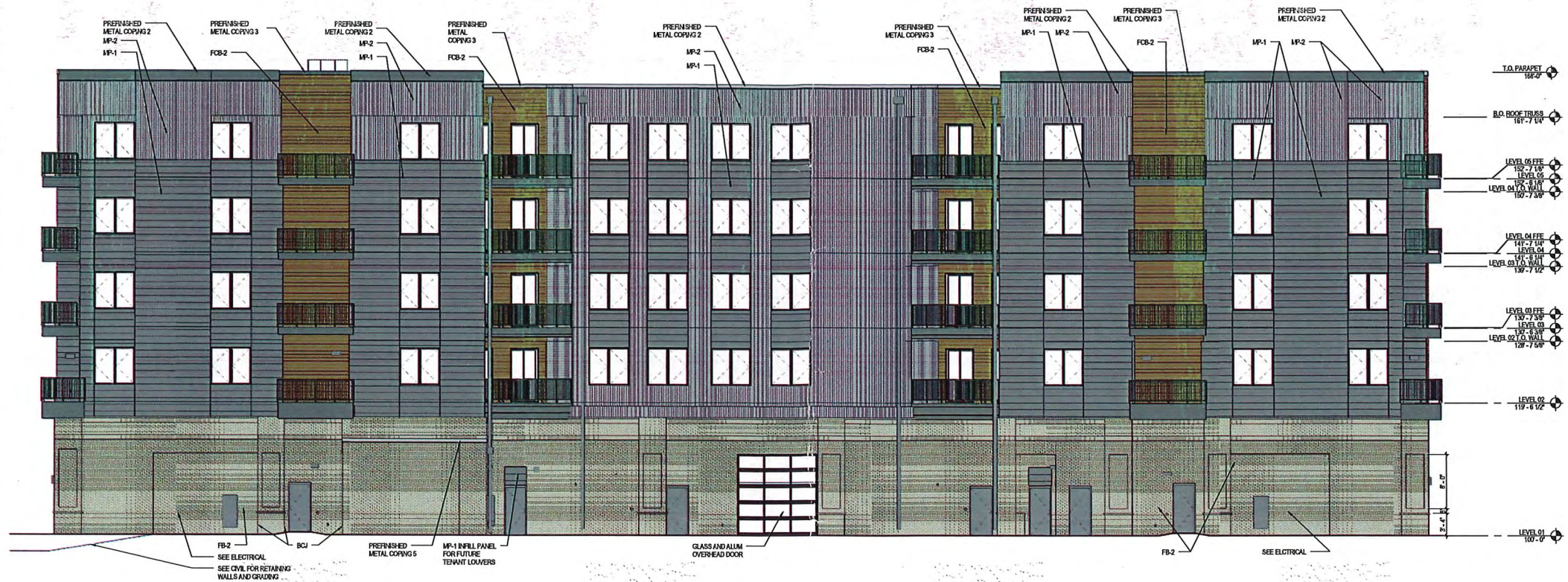
SCALE: 1/8" = 1'-0"

PRELIMINARY
NOT FOR
CONSTRUCTION

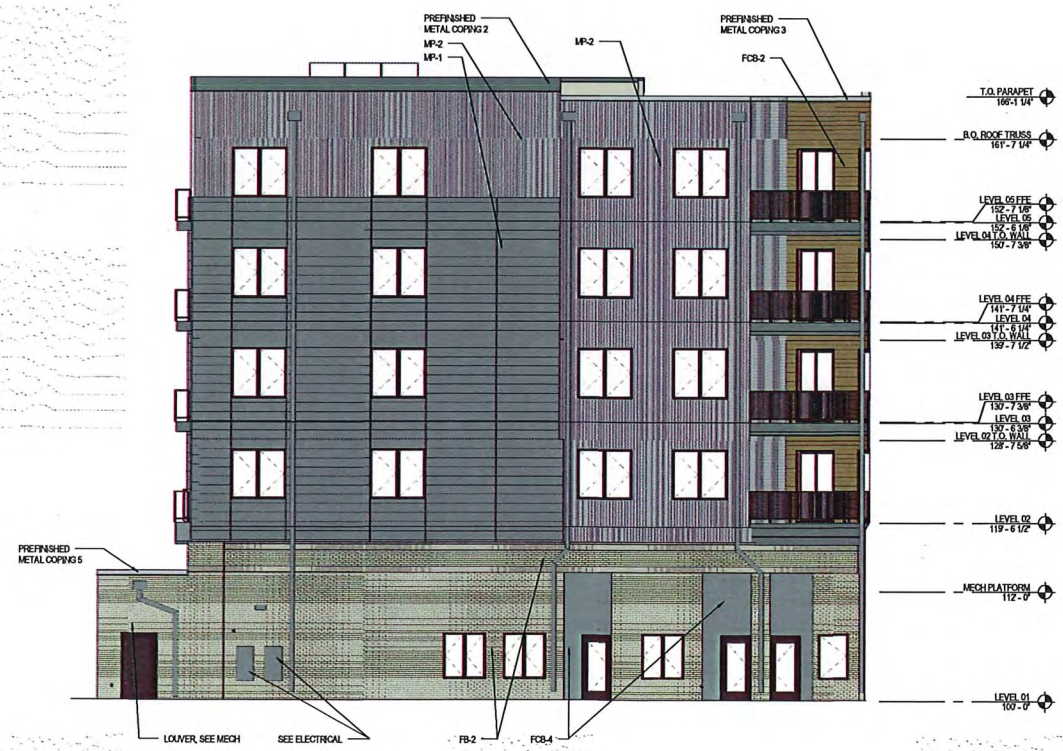
N. 48TH ST. & LEIGHTON AVE.
LINCOLN, NE 68504

**BLDG A - COLORED ELEVATIONS
UNIVERSITY PLACE**

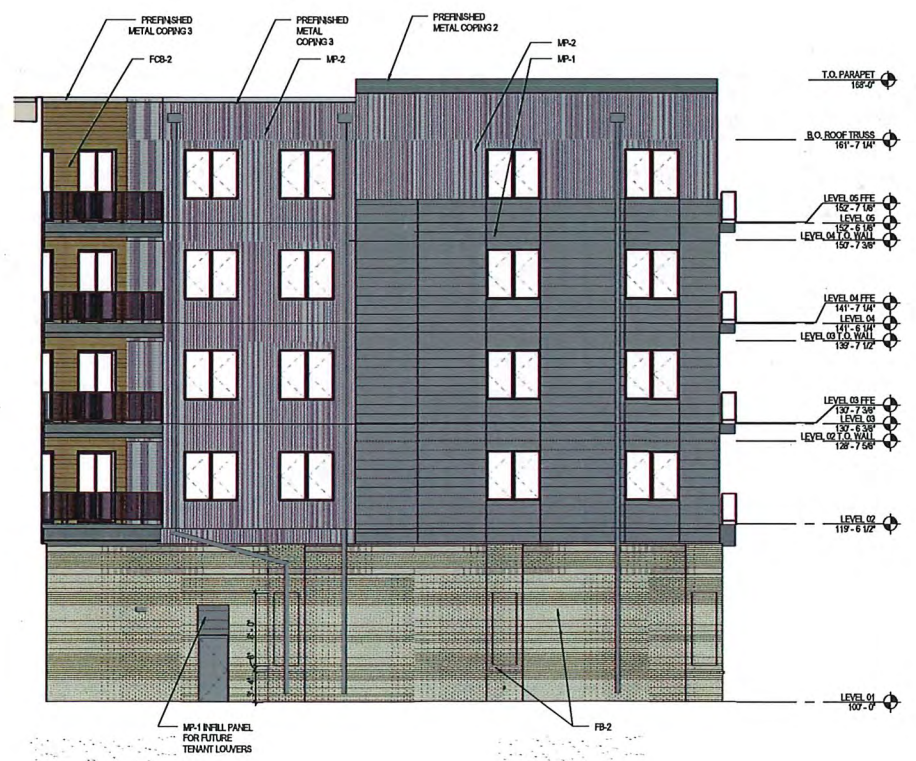
D2
15-0000-0000
15-0000-0011
Elevation



SOUTH ELEVATION
SCALE: 1/8" = 1'-0"



COURTYARD LOOKING WEST
SCALE: 1/8" = 1'-0"



COURTYARD LOOKING EAST
SCALE: 1/8" = 1'-0"

PRELIMINARY
NOT FOR
CONSTRUCTION

N. 48TH ST. & LEIGHTON AVE
LINCOLN, NE 68504

BLDG A - COLORED ELEVATIONS
UNIVERSITY PLACE

D3
16-1616-000
08/02/2017
Revised

DLR Group
Architecture Engineering Planning Interiors
©2017 DLR Group Inc. All Rights Reserved.

C:\Users\16161600\AppData\Local\Temp\16161600\16161600_2016_Corridor_01.dwg
8/2/2017 8:45:50 AM



SOUTH ELEVATION

SCALE: 1/8" = 1'-0"



EAST ELEVATION

SCALE: 1/8" = 1'-0"

PRELIMINARY
NOT FOR
CONSTRUCTION

N. 48TH ST. & LEIGHTON AVE.
LINCOLN, NE 68504

BLDG B - COLORED ELEVATIONS
UNIVERSITY PLACE

D4
UNIVERSITY
PLACE

Rev: 10/16/16 10:00 AM
2017.08.27.15 AM



WEST ELEVATION
SCALE: 1/8" = 1'-0"



NORTH ELEVATION
SCALE: 1/8" = 1'-0"

PRELIMINARY
NOT FOR
CONSTRUCTION

N 48TH ST. & LEIGHTON AVE
LINCOLN, NE 68504

BLDG B - COLORED ELEVATIONS
UNIVERSITY PLACE

D5
15-18210-00
08/02/2017
Revisions

DLR Group
Architecture Engineering Planning Interiors
© 2017, DLR Group Inc. All Rights Reserved. A Nebraska corporation. ALL RIGHTS RESERVED.

