

**LEGAL DESCRIPTION  
ANNEXATION AND COMP. PLAN AMENDMENT**

A LEGAL DESCRIPTION FOR ANNEXATION AND COMP. PLAN AMENDMENT PURPOSES FOR A TRACT OF LAND COMPOSED OF LOTS 25 I.T., 26 I.T. AND 21 I.T., A PORTION OF SOUTH 27<sup>TH</sup> STREET RIGHT-OF-WAY, A PORTION OF YANKEE HILL ROAD RIGHT-OF-WAY, AND A PORTION OF SOUTH 40<sup>TH</sup> STREET RIGHT-OF-WAY, ALL LOCATED IN THE SOUTH HALF OF SECTION 19, TOWNSHIP 9 NORTH, RANGE 7 EAST OF THE 6<sup>TH</sup> P.M., LANCASTER COUNTY, NEBRASKA, AND MORE PARTICULAR DESCRIBED AS FOLLOWS:

COMMENCING AT THE SOUTHEAST CORNER OF SAID SOUTHEAST QUARTER, SAID POINT BEING THE TRUE POINT OF BEGINNING, THENCE NORTH 88 DEGREES 05 MINUTES 40 SECONDS WEST ALONG THE SOUTH LINE OF SAID SOUTHEAST QUARTER, A DISTANCE OF 2642.29 FEET TO THE SOUTHWEST CORNER OF SAID SOUTHEAST QUARTER, THENCE SOUTH 88 DEGREES 45 MINUTES 30 SECONDS WEST ALONG THE SOUTH LINE OF SAID SOUTHWEST QUARTER, A DISTANCE OF 2647.20 FEET TO THE SOUTHWEST CORNER OF SAID SOUTHWEST QUARTER, THENCE NORTH 00 DEGREES 02 MINUTES 08 SECONDS WEST ALONG THE WEST LINE OF SAID SOUTHWEST QUARTER, A DISTANCE OF 2648.77 FEET TO THE NORTHWEST CORNER OF SAID SOUTHWEST QUARTER, THENCE SOUTH 89 DEGREES 35 MINUTES 44 SECONDS EAST ALONG THE NORTH LINE OF SAID SOUTHWEST QUARTER, A DISTANCE OF 2646.46 FEET TO THE NORTHEAST CORNER OF SAID SOUTHWEST QUARTER, THENCE SOUTH 00 DEGREES 02 MINUTES 27 SECONDS EAST ALONG THE EAST LINE OF SAID SOUTHWEST QUARTER, A DISTANCE OF 815.01 FEET TO THE NORTHWEST CORNER OF SAID LOT 21 I.T., THENCE SOUTH 89 DEGREES 35 MINUTES 16 SECONDS EAST ALONG THE NORTH LINE OF SAID LOT 21 I.T., AND ITS EXTENSION, A DISTANCE OF 2645.13 FEET TO A POINT OF INTERSECTION WITH THE EAST LINE OF SAID SOUTH EAST QUARTER, THENCE SOUTH 00 DEGREES 05 MINUTES 36 SECONDS WEST ALONG THE EAST LINE OF SAID SOUTHEAST QUARTER, A DISTANCE OF 1826.54 FEET TO THE TRUE POINT OF BEGINNING, SAID TRACT CONTAINS A CALCULATED AREA OF 267.35 ACRES, OR 11,645,856.18 SQUARE FEET MORE OR LESS

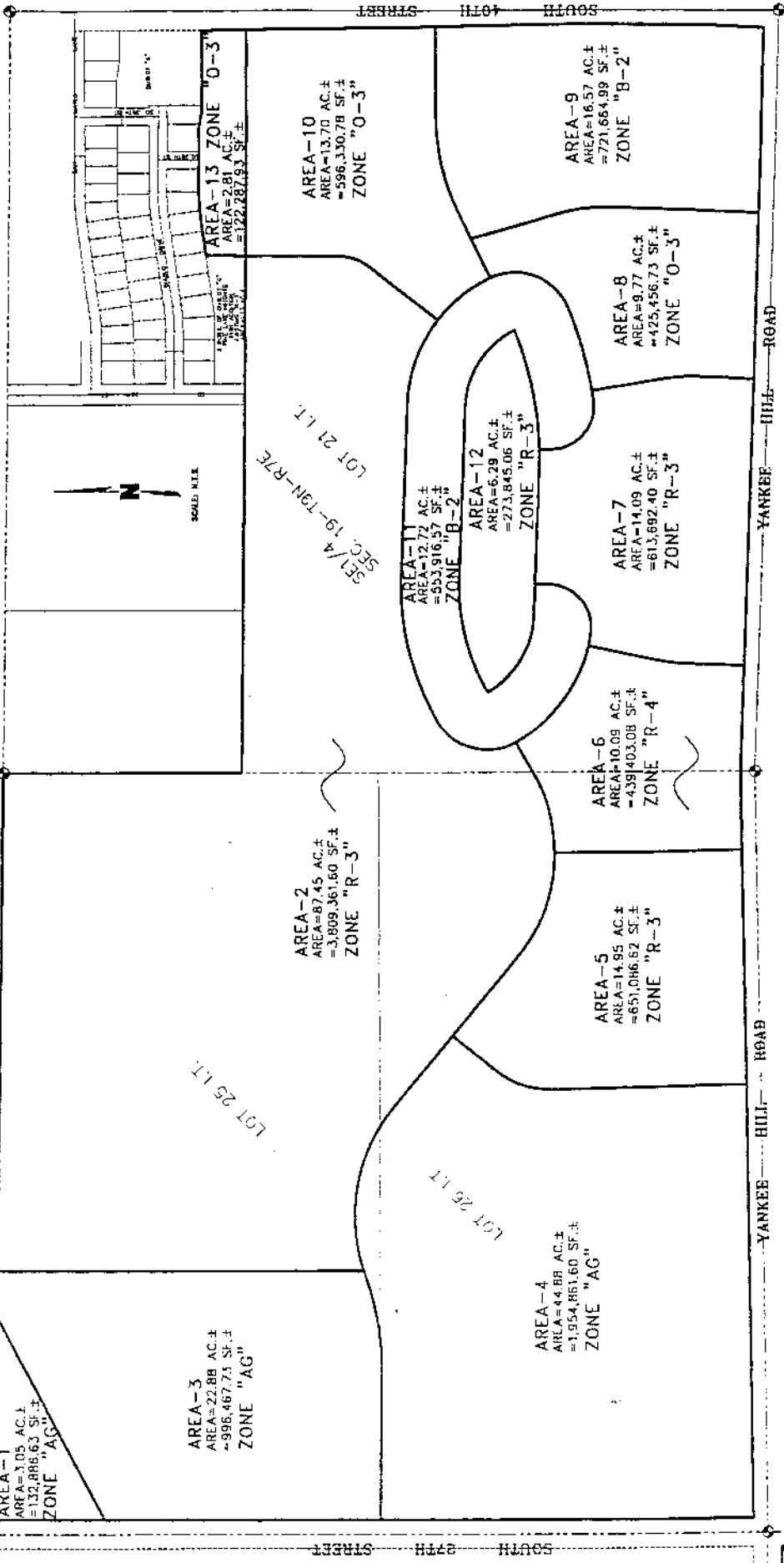
DECEMBER 30, 1998  
C:\GRAINGER\AREA13.L01

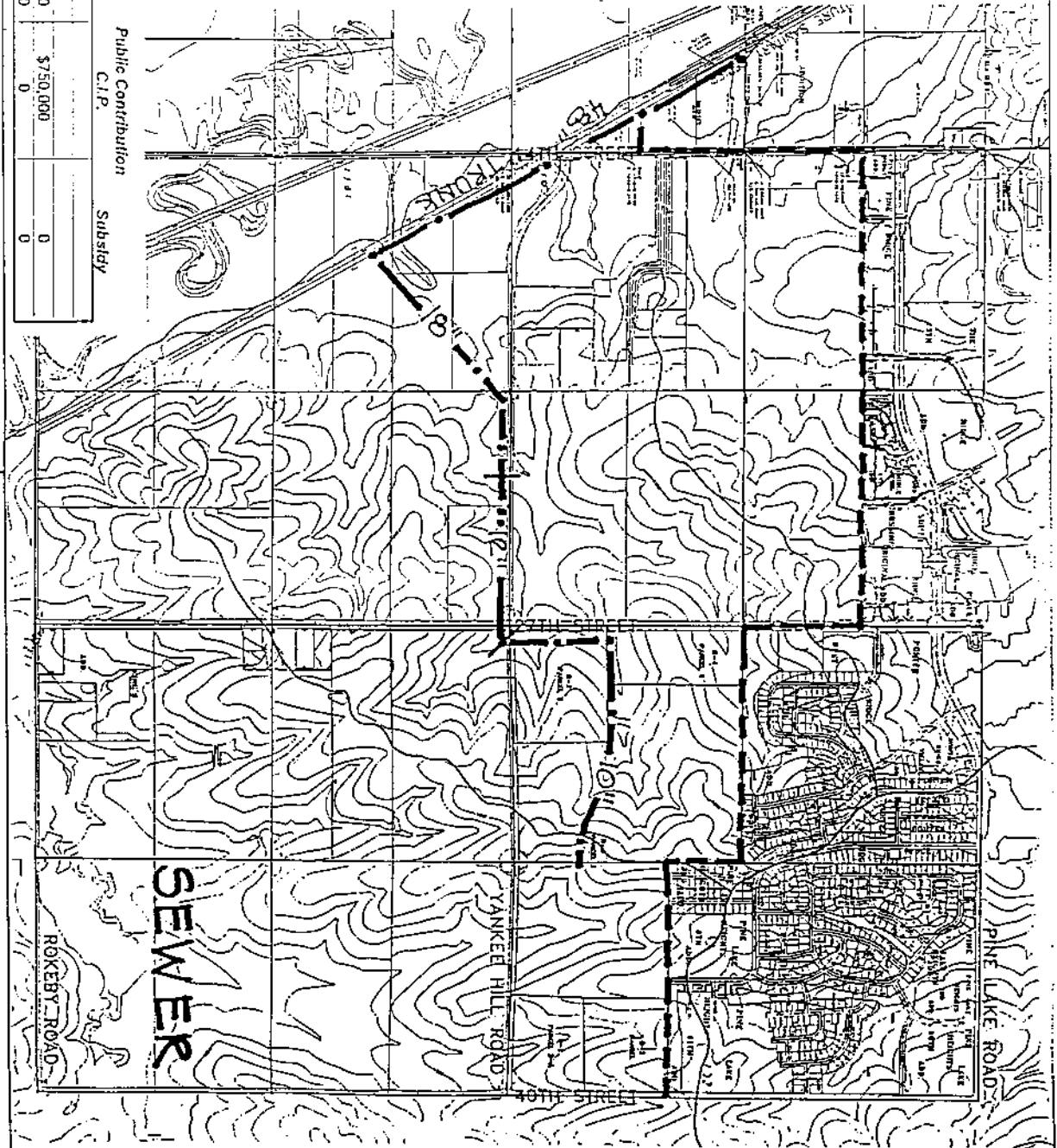
**TOGETHER WITH**

A LEGAL DESCRIPTION FOR ANNEXATION AND COMP. PLAN AMENDMENT PURPOSES FOR A TRACT OF LAND COMPOSED OF A PORTION OF LOT 28 I.T., A PORTION OF YANKEE HILL ROAD RIGHT-OF-WAY, AND A PORTION OF SOUTH 27<sup>TH</sup> STREET RIGHT-OF-WAY, ALL LOCATED IN THE NORTHWEST QUARTER OF SECTION 30, TOWNSHIP 9 NORTH, RANGE 7 EAST OF THE 6<sup>TH</sup> P.M., LANCASTER COUNTY, NEBRASKA, AND MORE PARTICULARLY DESCRIBED AS FOLLOWS:

OF SOUTH 18 DEGREES 15 MINUTES 59 SECONDS EAST, AND A CHORD LENGTH OF 267.37 FEET TO A POINT OF TANGENCY, THENCE SOUTH 07 DEGREES 59 MINUTES 55 SECONDS EAST, A DISTANCE OF 116.58 FEET TO A POINT, THENCE ALONG A CURVE IN A CLOCKWISE DIRECTION HAVING A RADIUS OF 320.00 FEET, ARC LENGTH OF 420.06 FEET, DELTA ANGLE OF 75 DEGREES 12 MINUTES 41 SECONDS, A CHORD BEARING OF SOUTH 34 DEGREES 45 MINUTES 10 SECONDS WEST, AND A CHORD LENGTH OF 390.54 FEET TO A POINT OF TANGENCY, THENCE SOUTH 02 DEGREES 51 MINUTES 11 SECONDS EAST, A DISTANCE OF 259.55 FEET TO A POINT, THENCE SOUTH 86 DEGREES 41 MINUTES 08 SECONDS WEST, A DISTANCE OF 467.42 FEET TO A POINT, THENCE NORTH 22 DEGREES 09 MINUTES 48 SECONDS WEST, A DISTANCE OF 974.42 FEET TO A POINT, THENCE NORTH 46 DEGREES 58 MINUTES 23 SECONDS EAST, A DISTANCE OF 728.39 FEET TO A POINT OF CURVATURE, THENCE ALONG A CURVE IN A CLOCKWISE DIRECTION HAVING A RADIUS OF 970.00 FEET, ARC LENGTH OF 184.88 FEET, DELTA ANGLE OF 10 DEGREES 55 MINUTES 13 SECONDS, A CHORD BEARING OF NORTH 52 DEGREES 25 MINUTES 59 SECONDS EAST, AND A CHORD LENGTH OF 184.60 FEET TO A POINT, THENCE NORTH 47 DEGREES 50 MINUTES 11 SECONDS WEST, A DISTANCE OF 62.19 FEET TO A POINT, THENCE ALONG A CURVE IN A COUNTER CLOCKWISE DIRECTION HAVING A RADIUS OF 1030.00 FEET, ARC LENGTH OF 179.45 FEET, DELTA ANGLE OF 09 DEGREES 58 MINUTES 56 SECONDS, A CHORD BEARING OF SOUTH 51 DEGREES 57 MINUTES 51 SECONDS WEST, AND A CHORD LENGTH OF 179.22 FEET TO A POINT OF TANGENCY, THENCE SOUTH 46 DEGREES 58 MINUTES 23 SECONDS WEST, A DISTANCE OF 705.52 FEET TO A POINT, THENCE NORTH 22 DEGREES 09 MINUTES 48 SECONDS WEST, A DISTANCE OF 118.70 FEET TO A POINT, THENCE NORTH 72 DEGREES 20 MINUTES 23 SECONDS WEST, A DISTANCE OF 159.14 FEET TO A POINT, THENCE NORTH 22 DEGREES 19 MINUTES 20 SECONDS WEST, A DISTANCE OF 638.85 FEET TO A POINT, THENCE NORTH 37 DEGREES 05 MINUTES 46 SECONDS WEST, A DISTANCE OF 361.94 FEET TO A POINT OF INTERSECTION WITH THE NORTH LINE OF SAID LOT 21 I.T., THENCE NORTH 89 DEGREES 39 MINUTES 00 SECONDS WEST ALONG THE NORTH LINE OF SAID LOT 21 I.T., A DISTANCE OF 293.29 FEET TO THE NORTHWEST CORNER OF SAID LOT 21 I.T., THENCE NORTH 28 DEGREES 36 MINUTES 46 SECONDS WEST ALONG THE WEST LINE OF SAID LOT 62 I.T., A DISTANCE OF 554.85 FEET TO A POINT OF DEFLECTION, THENCE NORTH 00 DEGREES 10 MINUTES 31 SECONDS WEST ALONG THE WEST LINE OF SAID LOT 62 I.T., A DISTANCE OF 64.78 FEET TO THE TRUE POINT OF BEGINNING: SAID TRACT CONTAINS A CALCULATED AREA OF 40.57 ACRES, OR 1,767,363 SQUARE FEET MORE OR LESS.

JANUARY 14, 1999  
F:\Projects\970368\MIKEREVIS\PARCEL15.L01





Utility	Cost	Private Contribution	Public Contribution C.I.P.	Subsidy
Sanitary Sewer	\$1,190,000	\$740,000	\$750,000	0
48" Trunk	\$490,000	\$100,000	0	0
Intersect Trunk				

EXHIBIT

OLSSON ASSOCIATES  
 CONSULTING ENGINEERS  
 1111 Lincoln Way, P.O. Box 84503, Lincoln, NE 68530

DWG.

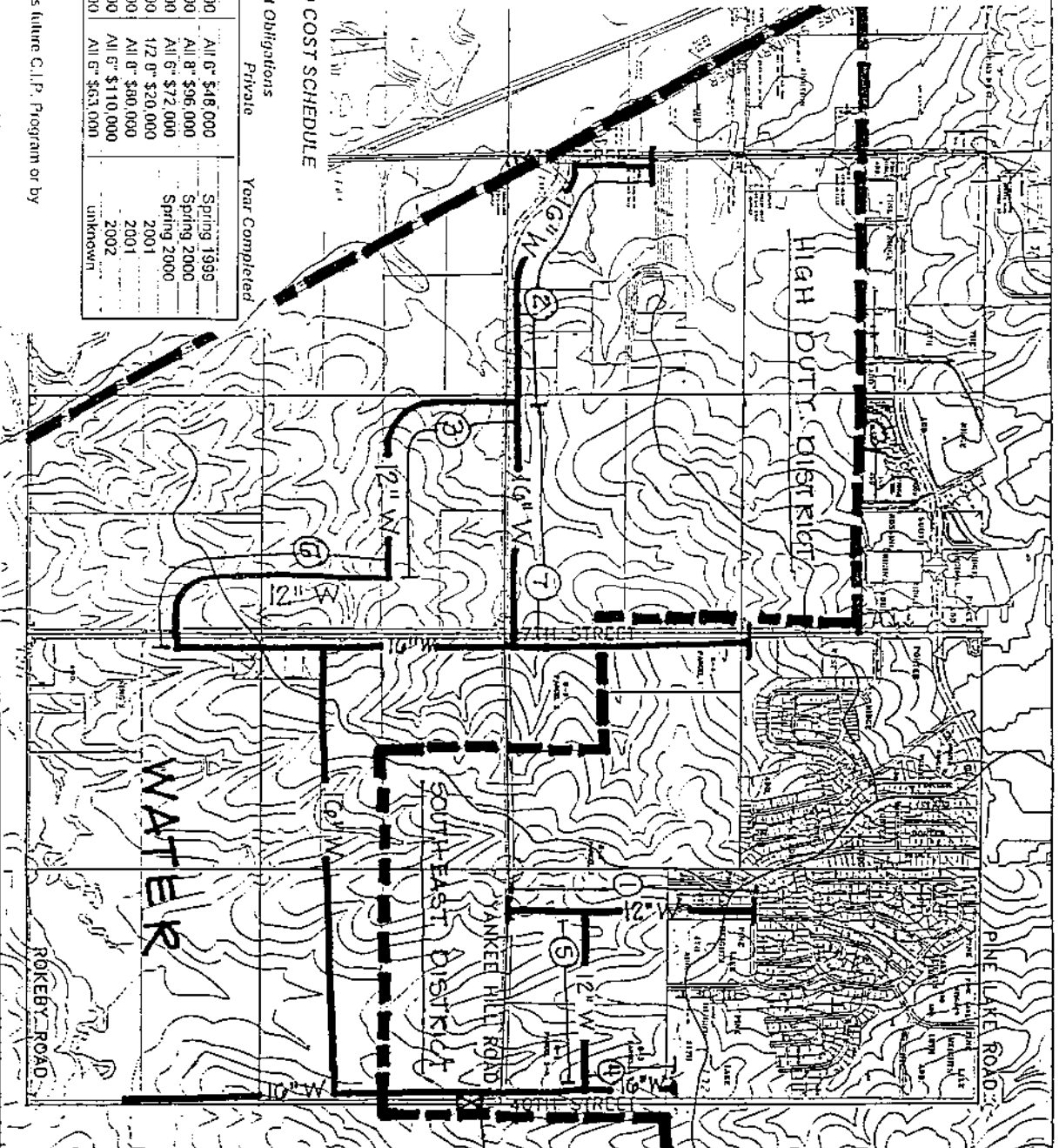


APPROXIMATE PIASING AND COST SCHEDULE

Line Item	Length & Size	Cost	Cost Obligations		Year Completed
			City	Private	
1	2,000 FT - 12"	\$96,000	\$48,000	All 6"	Spring 1999
2	3,500 FT - 16"	\$324,000	\$128,000	All 8"	Spring 2000
3	3,000 FT - 12"	\$144,000	\$72,000	All 6"	Spring 2000
4	1,200 FT - 16"	\$177,000	\$57,000	1/2 8" \$20,000	2001
5	2,500 FT - 12"	\$120,000	\$40,000	All 8"	2001
6	4,600 FT - 12"	\$320,000	\$110,000	All 6"	2002
7	2,600 FT - 16"	\$166,000	\$103,000	All 6"	UNKNOWN

Other projects would be completed as part of the City's future C.I.P. Program or by other land owners with City Subsidy.

APPROXIMATE PIASING AND COST SCHEDULE



Pressure reducing valve (Location is scheduled)

EXHIBIT

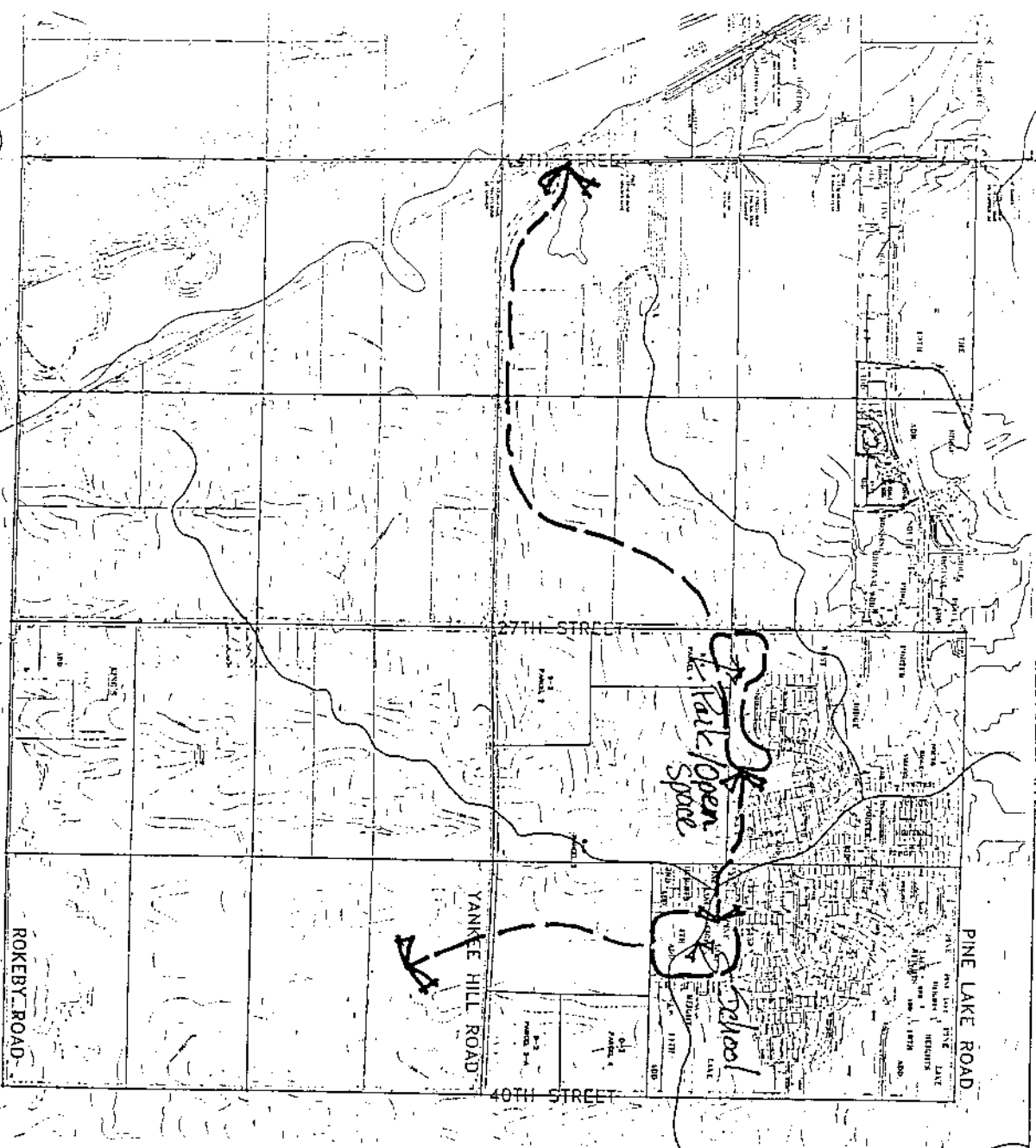
OLSSON ASSOCIATES  
CONSULTING ENGINEERS  
1111 Lincoln Mall, P.O. Box 84608, Lincoln, NE 68501

DWC.

EXHIBIT Parks & Trails

OLSSON ASSOCIATES  
CONSULTING ENGINEERS

DATE: 2/20/00



**LEGAL DESCRIPTION**  
**CHANGE OF ZONE TO "R-3"**  
(AREA-14)  
REVISED 1/14/99

A LEGAL DESCRIPTION FOR CHANGE OF ZONE PURPOSES FOR A TRACT OF LAND COMPOSED OF LOT 27 I.T., LOT 28 I.T., LOT 29 I.T., LOT 30 I.T., LOT 9 I.T., LOT 16 I.T., LOT 14 I.T., THE NORTHWEST QUARTER OF THE SOUTHEAST QUARTER, A PORTION OF LOT 18 I.T., A PORTION OF THE NORTH HALF OF THE SOUTH HALF OF THE NORTHWEST QUARTER, A PORTION OF LOT 4 I.T., A PORTION OF LOT 24 I.T., A PORTION OF LOT 1 I.T., AND A PORTION OF LOT 21 I.T., ALL LOCATED IN SECTION 25, TOWNSHIP 9 NORTH, RANGE 6 EAST OF THE 6<sup>TH</sup> P.M., LANCASTER COUNTY, NEBRASKA, AND MORE PARTICULARLY DESCRIBED AS FOLLOWS:

COMMENCING AT THE NORTHWEST CORNER OF SAID LOT 21 I.T., SAID POINT BEING THE TRUE POINT OF BEGINNING, THENCE ON AN ASSUMED BEARING OF SOUTH 89 DEGREES 39 MINUTES 00 SECONDS EAST ALONG THE NORTH LINE OF SAID LOT 21 I.T., A DISTANCE OF 293.29 FEET TO A POINT, THENCE SOUTH 37 DEGREES 05 MINUTES 46 SECONDS EAST, A DISTANCE OF 361.94 FEET TO A POINT, THENCE SOUTH 22 DEGREES 19 MINUTES 20 SECONDS EAST, A DISTANCE OF 638.85 FEET TO A POINT, THENCE SOUTH 72 DEGREES 20 MINUTES 23 SECONDS EAST, A DISTANCE OF 159.14 FEET TO A POINT, THENCE SOUTH 22 DEGREES 09 MINUTES 48 SECONDS EAST, A DISTANCE OF 118.70 FEET TO A POINT, THENCE NORTH 46 DEGREES 58 MINUTES 23 SECONDS EAST, A DISTANCE OF 705.52 FEET TO A POINT OF CURVATURE, THENCE ALONG A CURVE IN A CLOCKWISE DIRECTION HAVING A RADIUS OF 1030.00 FEET, ARC LENGTH OF 179.45 FEET, DELTA ANGLE OF 09 DEGREES 58 MINUTES 56 SECONDS, A CHORD BEARING OF NORTH 51 DEGREES 57 MINUTES 51 SECONDS EAST, AND A CHORD LENGTH OF 179.22 FEET TO A POINT, THENCE SOUTH 47 DEGREES 50 MINUTES 11 SECONDS EAST, A DISTANCE OF 62.19 FEET TO A POINT, THENCE ALONG A CURVE IN A COUNTER CLOCKWISE DIRECTION HAVING A RADIUS OF 970.00 FEET, ARC LENGTH OF 184.88 FEET, DELTA ANGLE OF 10 DEGREES 55 MINUTES 13 SECONDS, A CHORD BEARING OF SOUTH 52 DEGREES 25 MINUTES 59 SECONDS WEST, AND A CHORD LENGTH OF 184.60 FEET TO A POINT OF TANGENCY, THENCE SOUTH 46 DEGREES 58 MINUTES 23 SECONDS WEST, A DISTANCE OF 728.39 FEET TO A POINT, THENCE SOUTH 22 DEGREES 09 MINUTES 48 SECONDS EAST, A DISTANCE OF 974.42 FEET TO A POINT, THENCE NORTH 86 DEGREES 41 MINUTES 08 SECONDS EAST, A DISTANCE OF 467.42 FEET TO A POINT, THENCE NORTH 02 DEGREES 51 MINUTES 11 SECONDS WEST, A DISTANCE OF 259.55 FEET TO A POINT OF CURVATURE. THENCE ALONG A CURVE IN A CLOCKWISE DIRECTION HAVING A RADIUS OF 320.00 FEET, ARC LENGTH OF 420.06 FEET, DELTA ANGLE OF 75 DEGREES 12 MINUTES 41 SECONDS. A CHORD BEARING OF NORTH 34 DEGREES 45 MINUTES 10 SECONDS EAST, AND A CHORD LENGTH OF 390.54 FEET TO A POINT, THENCE NORTH 07 DEGREES 59 MINUTES 55 SECONDS WEST, A DISTANCE OF 116.58 FEET TO A POINT



OF CURVATURE, THENCE ALONG A CURVE IN A COUNTER CLOCKWISE DIRECTION, HAVING A RADIUS OF 750.00 FEET, ARC LENGTH OF 268.81 FEET, DELTA ANGLE OF 20 DEGREES 32 MINUTES 08 SECONDS, A CHORD BEARING OF NORTH 18 DEGREES 15 MINUTES 59 SECONDS WEST, AND A CHORD LENGTH OF 267.37 FEET TO A POINT OF TANGENCY, THENCE NORTH 28 DEGREES 32 MINUTES 04 SECONDS WEST, A DISTANCE OF 201.55 FEET TO A POINT OF CURVATURE, THENCE ALONG A CURVE HAVING A RADIUS OF 225.00 FEET, ARC LENGTH OF 277.63 FEET, DELTA ANGLE OF 70 DEGREES 41 MINUTES 53 SECONDS, A CHORD BEARING OF NORTH 06 DEGREES 48 MINUTES 53 SECONDS EAST, AND A CHORD LENGTH OF 260.35 FEET TO A POINT, THENCE NORTH 47 DEGREES 50 MINUTES 11 SECONDS WEST, A DISTANCE OF 394.72 FEET TO A POINT, THENCE NORTH 80 DEGREES 53 MINUTES 32 SECONDS WEST, A DISTANCE OF 870.14 FEET TO A POINT, THENCE SOUTH 61 DEGREES 23 MINUTES 14 SECONDS WEST, A DISTANCE OF 155.83 FEET TO A POINT, THENCE NORTH 37 DEGREES 05 MINUTES 46 SECONDS WEST, A DISTANCE OF 324.94 FEET TO A POINT OF INTERSECTION WITH THE NORTH LINE OF SAID LOT 21 I.T., THENCE SOUTH 89 DEGREES 39 MINUTES 00 SECONDS EAST ALONG THE NORTH LINE OF SAID LOT 21 I.T., A DISTANCE OF 310.30 FEET TO A POINT, THENCE ALONG A CURVE IN A COUNTER CLOCKWISE DIRECTION HAVING A RADIUS OF 898.83 FEET, ARC LENGTH OF 299.99 FEET, DELTA ANGLE OF 19 DEGREES 07 MINUTES 23 SECONDS, A CHORD BEARING OF SOUTH 80 DEGREES 01 MINUTES 18 SECONDS EAST ALONG THE NORTH LINE OF SAID LOT 21 I.T., AND A CHORD LENGTH OF 298.60 FEET TO A POINT OF TANGENCY, THENCE SOUTH 89 DEGREES 35 MINUTES 00 SECONDS EAST ALONG THE NORTH LINE OF SAID LOT 21 I.T., A DISTANCE OF 45.11 FEET TO THE NORTHWEST CORNER OF SAID LOT 1 I.T., THENCE NORTH 79 DEGREES 01 MINUTES 43 SECONDS EAST ALONG A NORTH LINE OF SAID LOT 1 I.T., A DISTANCE OF 86.57 FEET TO A POINT OF DEFLECTION, THENCE SOUTH 89 DEGREES 39 MINUTES 00 SECONDS EAST ALONG A NORTH LINE OF SAID LOT 1 I.T., A DISTANCE OF 1229.81 FEET TO THE NORTHEAST CORNER OF SAID LOT 1 I.T., THENCE SOUTH 89 DEGREES 38 MINUTES 45 SECONDS EAST ALONG THE NORTH LINE OF SAID LOTS 28 I.T., AND 27 I.T., A DISTANCE OF 2431.32 FEET TO A POINT OF DEFLECTION, THENCE SOUTH 00 DEGREES 21 MINUTES 15 SECONDS WEST ALONG THE EAST LINE OF SAID LOT 27 I.T., A DISTANCE OF 17.00 FEET TO A POINT OF DEFLECTION, THENCE SOUTH 89 DEGREES 38 MINUTES 45 SECONDS EAST ALONG THE EAST LINE OF SAID LOT 27 I.T., A DISTANCE OF 150.00 FEET TO THE NORTHEAST CORNER OF SAID LOT 27 I.T., THENCE SOUTH 00 DEGREES 03 MINUTES 17 SECONDS EAST ALONG THE EAST LINE OF SAID LOTS 27 I.T., AND 28 I.T., A DISTANCE OF 1274.72 FEET TO THE SOUTHEAST CORNER OF SAID LOT 28 I.T., THENCE SOUTH 00 DEGREES 38 MINUTES 43 SECONDS WEST ALONG THE EAST LINE OF SAID LOT 29 I.T., A DISTANCE OF 818.58 FEET TO A POINT OF DEFLECTION, THENCE SOUTH 00 DEGREES 02 MINUTES 20 SECONDS EAST ALONG THE EAST LINE OF SAID LOTS 29 I.T., AND 30 I.T., A DISTANCE OF 800.00 FEET TO A POINT OF DEFLECTION, THENCE SOUTH 00 DEGREES 50 MINUTES 02 SECONDS EAST ALONG THE EAST LINE OF SAID LOT 30 I.T., A DISTANCE OF 696.92 FEET TO A POINT OF DEFLECTION, THENCE NORTH 89 DEGREES 59 MINUTES 18 SECONDS EAST ALONG

**LEGAL DESCRIPTION**  
**CHANGE OF ZONE TO "0-3"**  
(AREA-13)  
REVISED 1/14/99

A LEGAL DESCRIPTION FOR CHANGE OF ZONE PURPOSES FOR A TRACT OF LAND COMPOSED OF A PORTION OF OUTLOT "G" PINE LAKE HEIGHTS 11<sup>TH</sup> ADDITION, ALL LOCATED IN THE SOUTHEAST QUARTER OF SECTION 19, TOWNSHIP 9 NORTH, RANGE 7 EAST OF THE 6<sup>TH</sup> P.M., CITY OF LINCOLN, LANCASTER COUNTY, NEBRASKA, AND MORE PARTICULARLY DESCRIBED AS FOLLOWS:

BEGINNING AT THE SOUTHEAST CORNER OF SAID OUTLOT "G", SAID POINT BEING THE TRUE POINT OF BEGINNING, THENCE ON AN ASSUMED BEARING OF NORTH 89 DEGREES 35 MINUTES 16 SECONDS WEST ALONG THE SOUTH LINE OF SAID OUTLOT "G", A DISTANCE OF 783.82 FEET TO A POINT, THENCE NORTH 00 DEGREES 24 MINUTES 44 SECONDS EAST, A DISTANCE OF 136.14 FEET TO A POINT OF INTERSECTION WITH THE NORTH LINE OF SAID OUTLOT "G", THENCE NORTH 81 DEGREES 46 MINUTES 02 SECONDS EAST ALONG THE NORTH LINE OF SAID OUTLOT "G", A DISTANCE OF 152.57 FEET TO A POINT OF DEFLECTION, THENCE NORTH 86 DEGREES 05 MINUTES 23 SECONDS EAST ALONG THE NORTH LINE OF SAID OUTLOT "G", A DISTANCE OF 68.44 FEET TO A POINT OF DEFLECTION, THENCE SOUTH 89 DEGREES 35 MINUTES 16 SECONDS EAST ALONG THE NORTH LINE OF SAID OUTLOT "G", A DISTANCE OF 219.99 FEET TO A POINT OF DEFLECTION, THENCE SOUTH 79 DEGREES 04 MINUTES 53 SECONDS EAST ALONG THE NORTH LINE OF SAID OUTLOT "G", A DISTANCE OF 62.04 FEET TO A POINT OF DEFLECTION, THENCE SOUTH 89 DEGREES 35 MINUTES 16 SECONDS EAST ALONG THE NORTH LINE OF SAID OUTLOT "G", A DISTANCE OF 281.09 FEET TO THE NORTHEAST CORNER OF SAID OUTLOT "G", THENCE SOUTH 00 DEGREES 35 MINUTES 06 SECONDS EAST ALONG THE EAST LINE OF SAID OUTLOT "G" A DISTANCE OF 152.94 FEET TO THE TRUE POINT OF BEGINNING, SAID TRACT CONTAINS A 2.81 ACRES, OR 122,287.93 SQUARE FEET MORE OR LESS.

January 14, 1999  
F:\Projects\970368\MIKEREVIS\PARCEL13.L01

OF TANGENCY, THENCE SOUTH 88 DEGREES 05 MINUTES 40 SECONDS EAST, A DISTANCE OF 597.87 FEET TO A POINT OF CURVATURE, THENCE ALONG A CURVE IN A CLOCKWISE DIRECTION HAVING A RADIUS OF 306.47 FEET, ARC LENGTH OF 329.97 FEET, DELTA ANGLE OF 61 DEGREES 41 MINUTES 22 SECONDS, A CHORD BEARING OF SOUTH 57 DEGREES 15 MINUTES 00 SECONDS EAST, AND A CHORD LENGTH OF 314.26 FEET TO A POINT, THENCE ALONG A CURVE IN A CLOCKWISE DIRECTION HAVING A RADIUS OF 1200.00 FEET, ARC LENGTH OF 425.53 FEET, DELTA ANGLE OF 20 DEGREES 19 MINUTES 02 SECONDS, A CHORD BEARING OF SOUTH 78 DEGREES 38 MINUTES 33 SECONDS WEST, AND A CHORD LENGTH OF 423.30 FEET TO THE TRUE POINT OF BEGINNING, SAID TRACT CONTAINS A CALCULATED AREA OF 6.29 ACRES, OR 273,845.06 SQUARE FEET MORE OR LESS.

AUGUST 19, 1998  
C:\GRAINGER\AREA12.L01

**LEGAL DESCRIPTION  
CHANGE OF ZONE TO "R-3"  
(AREA-12)**

A LEGAL DESCRIPTION FOR CHANGE OF ZONE PURPOSES FOR A TRACT OF LAND COMPOSED OF A PORTION OF LOT 21 I.T., LOCATED IN THE SOUTHEAST QUARTER OF SECTION 19, TOWNSHIP 9 NORTH, RANGE 7 EAST OF THE 6<sup>TH</sup> P.M., LANCASTER COUNTY, NEBRASKA, AND MORE PARTICULARLY DESCRIBED AS FOLLOWS:

COMMENCING AT THE SOUTHEAST CORNER OF SAID SOUTHEAST QUARTER, THENCE ON AN ASSUMED BEARING OF NORTH 88 DEGREES 05 MINUTES 40 SECONDS WEST ALONG THE SOUTH LINE OF SAID SOUTHEAST QUARTER, A DISTANCE OF 1275.00 FEET TO A POINT, THENCE NORTH 01 DEGREES 54 MINUTES 20 SECONDS EAST, A DISTANCE OF 245.52 FEET TO A POINT OF CURVATURE, THENCE ALONG A CURVE IN A COUNTER CLOCKWISE DIRECTION HAVING A RADIUS OF 600.00 FEET, ARC LENGTH OF 119.42 FEET, DELTA ANGLE OF 11 DEGREES 24 MINUTES 12 SECONDS, A CHORD BEARING OF NORTH 03 DEGREES 47 MINUTES 46 SECONDS WEST, AND A CHORD LENGTH OF 119.22 FEET TO A POINT OF TANGENCY, THENCE NORTH 09 DEGREES 29 MINUTES 53 SECONDS WEST, A DISTANCE OF 238.19 FEET TO A POINT, THENCE ALONG A CURVE IN A CLOCKWISE DIRECTION HAVING A RADIUS OF 1400.00 FEET, ARC LENGTH OF 34.38 FEET, DELTA ANGLE OF 01 DEGREES 24 MINUTES 25 SECONDS, A CHORD BEARING OF SOUTH 81 DEGREES 12 MINUTES 20 SECONDS WEST, AND A CHORD LENGTH OF 34.38 FEET TO A POINT OF COMPOUND CURVATURE, THENCE ALONG A CURVE IN A CLOCKWISE DIRECTION HAVING A RADIUS OF 150.00 FEET, ARC LENGTH OF 253.66 FEET, DELTA ANGLE OF 96 DEGREES 53 MINUTES 32 SECONDS, A CHORD BEARING OF NORTH 49 DEGREES 38 MINUTES 42 SECONDS WEST, AND A CHORD LENGTH OF 224.50 FEET TO A POINT OF TANGENCY, THENCE NORTH 01 DEGREES 11 MINUTES 56 SECONDS WEST, A DISTANCE OF 40.97 FEET TO A POINT, SAID POINT BEING THE TRUE POINT OF BEGINNING, THENCE ALONG A CURVE IN A CLOCKWISE DIRECTION HAVING A RADIUS OF 1200.00 FEET, ARC LENGTH OF 65.02 FEET, DELTA ANGLE OF 03 DEGREES 06 MINUTES 16 SECONDS, A CHORD BEARING OF NORTH 89 DEGREES 38 MINUTES 48 SECONDS WEST, AND A CHORD LENGTH OF 65.01 FEET TO A POINT OF TANGENCY, THENCE NORTH 88 DEGREES 05 MINUTES 40 SECONDS WEST, A DISTANCE OF 515.73 FEET TO A POINT OF CURVATURE, THENCE ALONG A CURVE IN A CLOCKWISE DIRECTION HAVING A RADIUS OF 313.05 FEET, ARC LENGTH OF 319.60 FEET, DELTA ANGLE OF 58 DEGREES 29 MINUTES 40 SECONDS, A CHORD BEARING OF NORTH 58 DEGREES 50 MINUTES 50 SECONDS WEST, AND A CHORD LENGTH OF 305.90 FEET TO A POINT, THENCE NORTH 60 DEGREES 46 MINUTES 49 SECONDS EAST, A DISTANCE OF 4.98 FEET TO A POINT OF CURVATURE, THENCE ALONG A CURVE IN A CLOCKWISE DIRECTION HAVING A RADIUS OF 750.00 FEET, ARC LENGTH OF 407.43 FEET, DELTA ANGLE OF 31 DEGREES 07 MINUTES 31 SECONDS, A CHORD BEARING OF NORTH 76 DEGREES 20 MINUTES 34 SECONDS EAST, AND A CHORD LENGTH OF 402.44 FEET TO A POINT

POINT OF CURVATURE, THENCE ALONG A CURVE IN A COUNTER CLOCKWISE DIRECTION, HAVING A RADIUS OF 313.05 FEET, ARC LENGTH OF 319.60 FEET, DELTA ANGLE OF 58 DEGREES 29 MINUTES 40 SECONDS, A CHORD BEARING OF SOUTH 58 DEGREES 50 MINUTES 50 SECONDS EAST, AND A CHORD LENGTH OF 305.90 FEET TO A POINT OF TANGENCY, THENCE SOUTH 88 DEGREES 05 MINUTES 40 SECONDS EAST, A DISTANCE OF 114.73 FEET TO A POINT, THENCE SOUTH 01 DEGREES 54 MINUTES 20 SECONDS WEST, A DISTANCE OF 48.28 FEET TO A POINT OF CURVATURE, THENCE ALONG A CURVE IN A CLOCKWISE DIRECTION HAVING A RADIUS OF 150.00 FEET, ARC LENGTH OF 250.21 FEET, DELTA ANGLE OF 95 DEGREES 34 MINUTES 29 SECONDS, A CHORD BEARING OF SOUTH 49 DEGREES 41 MINUTES 34 SECONDS WEST, AND A CHORD LENGTH OF 222.20 FEET TO A POINT OF COMPOUND CURVATURE, THENCE ALONG A CURVE IN A CLOCKWISE DIRECTION HAVING A RADIUS OF 513.05 FEET, ARC LENGTH OF 475.19 FEET, DELTA ANGLE OF 53 DEGREES 04 MINUTES 05 SECONDS, A CHORD BEARING OF NORTH 55 DEGREES 59 MINUTES 09 SECONDS WEST, AND A CHORD LENGTH OF 458.39 FEET TO A POINT OF COMPOUND CURVATURE, THENCE ALONG A CURVE IN A CLOCKWISE DIRECTION HAVING A RADIUS OF 200.00 FEET, ARC LENGTH OF 323.03 FEET, DELTA ANGLE OF 92 DEGREES 32 MINUTES 26 SECONDS, A CHORD BEARING OF NORTH 16 DEGREES 49 MINUTES 06 SECONDS EAST, AND A CHORD LENGTH OF 289.04 FEET TO A POINT OF TANGENCY, THENCE NORTH 63 DEGREES 05 MINUTES 19 SECONDS EAST, A DISTANCE OF 35.22 FEET TO A POINT OF CURVATURE, THENCE ALONG A CURVE IN A CLOCKWISE DIRECTION HAVING A RADIUS OF 950.00 FEET, ARC LENGTH OF 477.80 FEET, DELTA ANGLE OF 28 DEGREES 49 MINUTES 00 SECONDS, A CHORD BEARING OF NORTH 77 DEGREES 29 MINUTES 49 SECONDS EAST, AND A CHORD LENGTH OF 472.78 FEET TO A POINT OF TANGENCY, THENCE SOUTH 88 DEGREES 05 MINUTES 40 SECONDS EAST, A DISTANCE OF 597.87 FEET TO A POINT OF CURVATURE, THENCE ALONG A CURVE IN A CLOCKWISE DIRECTION HAVING A RADIUS OF 506.47 FEET, ARC LENGTH OF 545.30 FEET, DELTA ANGLE OF 61 DEGREES 41 MINUTES 22 SECONDS, A CHORD BEARING OF SOUTH 57 DEGREES 15 MINUTES 00 SECONDS EAST, AND A CHORD LENGTH OF 519.34 FEET TO A POINT OF COMPOUND CURVATURE, THENCE ALONG A CURVE IN A CLOCKWISE DIRECTION HAVING A RADIUS OF 200.00 FEET, ARC LENGTH OF 331.22 FEET, DELTA ANGLE OF 94 DEGREES 53 MINUTES 20 SECONDS, A CHORD BEARING OF SOUTH 21 DEGREES 02 MINUTES 21 SECONDS WEST, AND A CHORD LENGTH OF 294.65 FEET TO A POINT OF COMPOUND CURVATURE. THENCE ALONG A CURVE IN A CLOCKWISE DIRECTION HAVING A RADIUS OF 1400.00 FEET, ARC LENGTH OF 293.66 FEET, DELTA ANGLE OF 12 DEGREES 01 MINUTES 06 SECONDS, A CHORD BEARING OF SOUTH 74 DEGREES 29 MINUTES 34 SECONDS WEST, AND A CHORD LENGTH OF 293.13 FEET TO THE TRUE POINT OF BEGINNING. SAID TRACT CONTAINS A CALCULATED AREA OF 12.72 ACRES. OR 553,916.57 SQUARE FEET MORE OR LESS.

AUGUST 19, 1998  
CAGRAINGERVAREAT11.L01

**LEGAL DESCRIPTION**  
**CHANGE OF ZONE TO "B-2"**  
(AREA-11)

A LEGAL DESCRIPTION FOR CHANGE OF ZONE PURPOSES FOR A TRACT OF LAND COMPOSED OF A PORTION OF LOT 21 I.T., LOCATED IN THE SOUTHEAST QUARTER OF SECTION 19, TOWNSHIP 9 NORTH, RANGE 7 EAST OF THE 6<sup>TH</sup> P.M., LANCASTER COUNTY, NEBRASKA, AND MORE PARTICULARLY DESCRIBED AS FOLLOWS:

COMMENCING AT THE SOUTHEAST CORNER OF SAID SOUTHEAST QUARTER, THENCE NORTH 88 DEGREES 05 MINUTES 40 SECONDS WEST ALONG THE SOUTH LINE OF SAID SOUTHEAST QUARTER, A DISTANCE OF 1275.00 FEET TO A POINT, THENCE NORTH 01 DEGREES 54 MINUTES 20 SECONDS EAST, A DISTANCE OF 245.52 FEET TO A POINT OF CURVATURE, THENCE ALONG A CURVE IN A COUNTER CLOCKWISE DIRECTION HAVING A RADIUS OF 600.00 FEET, ARC LENGTH OF 119.42 FEET, DELTA ANGLE OF 11 DEGREES 24 MINUTES 12 SECONDS, A CHORD BEARING OF NORTH 03 DEGREES 47 MINUTES 46 SECONDS WEST, AND A CHORD LENGTH OF 119.22 FEET TO A POINT OF TANGENCY, THENCE NORTH 09 DEGREES 29 MINUTES 53 SECONDS WEST, A DISTANCE OF 238.19 FEET TO A POINT, SAID POINT BEING THE TRUE POINT OF BEGINNING, THENCE ALONG A CURVE IN A CLOCKWISE DIRECTION HAVING A RADIUS OF 1400.00 FEET, ARC LENGTH OF 34.38 FEET, DELTA ANGLE OF 01 DEGREES 24 MINUTES 25 SECONDS, A CHORD BEARING OF SOUTH 81 DEGREES 12 MINUTES 20 SECONDS WEST, AND A CHORD LENGTH OF 34.38 FEET TO A POINT OF COMPOUND CURVATURE, THENCE ALONG A CURVE IN A CLOCKWISE DIRECTION HAVING A RADIUS OF 150.00 FEET, ARC LENGTH OF 253.66 FEET, DELTA ANGLE OF 96 DEGREES 53 MINUTES 32 SECONDS, A CHORD BEARING OF NORTH 49 DEGREES 38 MINUTES 42 SECONDS WEST, AND A CHORD LENGTH OF 224.50 FEET TO A POINT OF TANGENCY, THENCE NORTH 01 DEGREES 11 MINUTES 56 SECONDS WEST, A DISTANCE OF 40.97 FEET TO A POINT, THENCE ALONG A CURVE IN A COUNTER CLOCKWISE DIRECTION HAVING A RADIUS OF 1200.00 FEET, ARC LENGTH OF 425.53 FEET, DELTA ANGLE OF 20 DEGREES 19 MINUTES 02 SECONDS, A CHORD BEARING OF NORTH 78 DEGREES 38 MINUTES 33 SECONDS EAST, AND A CHORD LENGTH OF 423.30 FEET TO A POINT, THENCE ALONG A CURVE IN A COUNTER CLOCKWISE DIRECTION HAVING A RADIUS OF 306.47 FEET, ARC LENGTH OF 329.97 FEET, DELTA ANGLE OF 61 DEGREES 41 MINUTES 22 SECONDS, A CHORD BEARING OF NORTH 57 DEGREES 15 MINUTES 00 SECONDS WEST, AND A CHORD LENGTH OF 314.26 FEET TO A POINT OF TANGENCY, THENCE NORTH 88 DEGREES 05 MINUTES 40 SECONDS WEST, A DISTANCE OF 597.87 FEET TO A POINT OF CURVATURE, THENCE ALONG A CURVE IN A COUNTER CLOCKWISE DIRECTION HAVING A RADIUS OF 750.00 FEET, ARC LENGTH OF 407.43 FEET, DELTA ANGLE OF 31 DEGREES 07 MINUTES 31 SECONDS, A CHORD BEARING OF SOUTH 76 DEGREES 20 MINUTES 34 SECONDS WEST, AND A CHORD LENGTH OF 402.44 FEET TO A POINT OF TANGENCY, THENCE SOUTH 60 DEGREES 46 MINUTES 49 SECONDS WEST, A DISTANCE OF 4.98 FEET TO A

**LEGAL DESCRIPTION**  
**CHANGE OF ZONE TO "0-3"**  
(AREA-10)  
REVISED 1/14/99

A LEGAL DESCRIPTION CHANGE OF ZONE PURPOSES FOR A TRACT OF LAND COMPOSED OF A PORTION OF LOT 21 I.T., ALL LOCATED IN THE SOUTHEAST QUARTER OF SECTION 19, TOWNSHIP 9 NORTH, RANGE 7 EAST OF THE 6<sup>TH</sup> P.M., LANCASTER COUNTY, NEBRASKA, AND MORE PARTICULARLY DESCRIBED AS FOLLOWS:

COMMENCING AT THE SOUTHEAST CORNER OF SAID SOUTHEAST QUARTER, THENCE ON AN ASSUMED BEARING OF NORTH 00 DEGREES 05 MINUTES 36 SECONDS EAST ALONG THE EAST LINE OF SAID SOUTHEAST QUARTER, A DISTANCE OF 1175.00 FEET TO A POINT, THENCE NORTH 89 DEGREES 54 MINUTES 24 SECONDS WEST, A DISTANCE OF 56.41 FEET TO A POINT OF INTERSECTION WITH THE EAST LINE OF SAID LOT 21 I.T., SAID POINT BEING THE TRUE POINT OF BEGINNING, THENCE NORTH 89 DEGREES 54 MINUTES 24 SECONDS WEST, A DISTANCE OF 311.29 FEET TO A POINT OF CURVATURE, THENCE ALONG A CURVE IN A COUNTER CLOCKWISE DIRECTION HAVING A RADIUS OF 750.00 FEET, ARC LENGTH OF 338.73 FEET, DELTA ANGLE OF 25 DEGREES 52 MINUTES 36 SECONDS, A CHORD BEARING OF SOUTH 77 DEGREES 09 MINUTES 18 SECONDS WEST, AND A CHORD LENGTH OF 335.85 FEET TO A POINT OF TANGENCY, THENCE SOUTH 64 DEGREES 13 MINUTES 00 SECONDS WEST, A DISTANCE OF 254.81 FEET TO A POINT, THENCE ALONG A CURVE IN A COUNTER CLOCKWISE DIRECTION HAVING A RADIUS OF 506.47 FEET, ARC LENGTH OF 233.85 FEET, DELTA ANGLE OF 26 DEGREES 27 MINUTES 19 SECONDS, A CHORD BEARING OF NORTH 39 DEGREES 00 MINUTES 40 SECONDS WEST, AND A CHORD LENGTH OF 231.78 FEET TO A POINT, THENCE NORTH 37 DEGREES 45 MINUTES 41 SECONDS EAST, A DISTANCE OF 301.11 FEET TO A POINT OF CURVATURE, THENCE ALONG A CURVE IN A COUNTER CLOCKWISE DIRECTION HAVING A RADIUS OF 175.00 FEET, ARC LENGTH OF 115.05 FEET, DELTA ANGLE OF 37 DEGREES 40 MINUTES 04 SECONDS, A CHORD BEARING OF NORTH 18 DEGREES 55 MINUTES 39 SECONDS EAST, AND A CHORD LENGTH OF 112.99 FEET TO A POINT OF TANGENCY, THENCE NORTH 00 DEGREES 05 MINUTES 36 SECONDS EAST, A DISTANCE OF 317.52 FEET TO A POINT OF INTERSECTION WITH THE NORTH LINE OF SAID LOT 21 I.T., THENCE SOUTH 89 DEGREES 35 MINUTES 16 SECONDS EAST ALONG THE NORTH LINE OF SAID LOT 21 I.T., A DISTANCE OF 783.82 FEET TO THE NORTHEAST CORNER OF SAID LOT 21 I.T., THENCE SOUTH 00 DEGREES 45 MINUTES 57 SECONDS EAST ALONG THE EAST LINE OF SAID LOT 21 I.T., A DISTANCE OF 651.98 FEET TO THE TRUE POINT OF BEGINNING. SAID TRACT CONTAINS A CALCULATED AREA OF 13.70 ACRES, OR 596,330.78 SQUARE FEET MORE OR LESS.

January 14, 1999  
C:\GRAINGER\AREA10.L01

**LEGAL DESCRIPTION**  
**CHANGE OF ZONE TO "B-2"**  
(AREA-9)  
REVISED 1/14/99

A LEGAL DESCRIPTION FOR CHANGE OF ZONE PURPOSES FOR A TRACT OF LAND COMPOSED OF A PORTION OF LOT 21 I.T., ALL LOCATED IN THE SOUTHEAST QUARTER OF SECTION 19, TOWNSHIP 9 NORTH, RANGE 7 EAST OF THE 6<sup>TH</sup> P.M., LANCASTER COUNTY, NEBRASKA, AND MORE PARTICULARLY DESCRIBED AS FOLLOWS:

BEGINNING AT THE SOUTHEAST CORNER OF SAID LOT 21 I.T., THENCE ON AN ASSUMED BEARING OF NORTH 88 DEGREES 05 MINUTES 40 SECONDS WEST ALONG THE SOUTH LINE OF SAID LOT 21 I.T., A DISTANCE OF 638.42 FEET TO A POINT, THENCE NORTH 01 DEGREES 54 MINUTES 20 SECONDS EAST, A DISTANCE OF 501.85 FEET TO A POINT OF CURVATURE, THENCE ALONG A CURVE IN A COUNTER CLOCKWISE DIRECTION HAVING A RADIUS OF 600.00 FEET, ARC LENGTH OF 185.24 FEET, DELTA ANGLE OF 17 DEGREES 41 MINUTES 20 SECONDS, A CHORD BEARING OF NORTH 06 DEGREES 56 MINUTES 20 SECONDS WEST, AND A CHORD LENGTH OF 184.50 FEET TO A POINT OF TANGENCY, THENCE NORTH 15 DEGREES 47 MINUTES 00 SECONDS WEST, A DISTANCE OF 309.02 FEET TO A POINT, THENCE NORTH 64 DEGREES 13 MINUTES 00 SECONDS EAST, A DISTANCE OF 104.81 FEET TO A POINT OF CURVATURE, THENCE ALONG A CURVE IN A CLOCKWISE DIRECTION HAVING A RADIUS OF 750.00 FEET, ARC LENGTH OF 338.73 FEET, DELTA ANGLE OF 25 DEGREES 52 MINUTES 36 SECONDS, A CHORD BEARING OF NORTH 77 DEGREES 09 MINUTES 18 SECONDS EAST, AND A CHORD LENGTH OF 335.85 FEET TO A POINT OF TANGENCY, THENCE SOUTH 89 DEGREES 54 MINUTES 24 SECONDS EAST, A DISTANCE OF 311.29 FEET TO A POINT OF INTERSECTION WITH THE EAST LINE OF SAID LOT 21 I.T., THENCE SOUTH 00 DEGREES 45 MINUTES 57 SECONDS EAST ALONG THE EAST LINE OF SAID LOT 21 I.T., A DISTANCE OF 427.34 FEET TO A POINT OF DEFLECTION, THENCE SOUTH 00 DEGREES 05 MINUTES 36 SECONDS WEST ALONG THE EAST LINE OF SAID LOT 21 I.T., A DISTANCE OF 499.63 FEET TO A POINT OF DEFLECTION, THENCE SOUTH 03 DEGREES 00 MINUTES 11 SECONDS WEST ALONG THE EAST LINE OF SAID LOT 21 I.T. TO THE TRUE POINT OF BEGINNING, SAID TRACT CONTAINS A CALCULATED AREA OF 16.57 ACRES, OR 721,664.99 SQUARE FEET MORE OR LESS.

January 14, 1999  
C:\GRAINGER\AREA9.L01



**LEGAL DESCRIPTION**  
**CHANGE OF ZONE TO "O-3"**  
(AREA-8)  
REVISED 1/14/99

A LEGAL DESCRIPTION FOR CHANGE OF ZONE PURPOSES FOR A TRACT OF LAND COMPOSED OF A PORTION OF LOT 21 I.T., ALL LOCATED IN THE SOUTHEAST QUARTER OF SECTION 19, TOWNSHIP 9 NORTH, RANGE 7 EAST OF THE 6<sup>TH</sup> P.M., LANCASTER COUNTY, NEBRASKA, AND MORE PARTICULARLY DESCRIBED AS FOLLOWS:

COMMENCING AT THE SOUTHEAST CORNER OF SAID SOUTHEAST QUARTER, THENCE ON AN ASSUMED BEARING OF NORTH 88 DEGREES 05 MINUTES 40 SECONDS WEST ALONG THE SOUTH LINE OF SAID SOUTHEAST QUARTER, A DISTANCE OF 700.00 FEET TO A POINT, THENCE NORTH 01 DEGREES 54 MINUTES 20 SECONDS EAST A DISTANCE OF 50.00 FEET TO A POINT OF INTERSECTION WITH THE SOUTH LINE OF SAID LOT 21 I.T., SAID POINT BEING THE TRUE POINT OF BEGINNING, THENCE NORTH 88 DEGREES 05 MINUTES 40 SECONDS WEST ALONG THE SOUTH LINE OF SAID LOT 21 I.T., A DISTANCE OF 575.00 FEET TO A POINT, THENCE NORTH 01 DEGREES 54 MINUTES 20 SECONDS EAST, A DISTANCE OF 195.52 FEET TO A POINT OF CURVATURE, THENCE ALONG A CURVE IN A COUNTER CLOCKWISE DIRECTION HAVING A RADIUS OF 600.00 FEET, ARC LENGTH OF 119.42 FEET, DELTA ANGLE OF 11 DEGREES 24 MINUTES 12 SECONDS, A CHORD BEARING OF NORTH 03 DEGREES 47 MINUTES 46 SECONDS WEST, AND A CHORD LENGTH OF 119.22 FEET TO A POINT OF TANGENCY, THENCE NORTH 09 DEGREES 29 MINUTES 53 SECONDS WEST, A DISTANCE OF 238.19 FEET TO A POINT, THENCE ALONG A CURVE IN A COUNTER CLOCKWISE DIRECTION HAVING A RADIUS OF 1400.00 FEET, ARC LENGTH OF 293.66 FEET, DELTA ANGLE OF 12 DEGREES 01 MINUTES 06 SECONDS, A CHORD BEARING OF NORTH 74 DEGREES 29 MINUTES 34 SECONDS EAST, AND A CHORD LENGTH OF 293.13 FEET TO A POINT OF COMPOUND CURVATURE, THENCE ALONG A CURVE IN A COUNTER CLOCKWISE DIRECTION HAVING A RADIUS OF 200.00 FEET, ARC LENGTH OF 325.73 FEET, DELTA ANGLE OF 93 DEGREES 18 MINUTES 51 SECONDS, A CHORD BEARING OF NORTH 21 DEGREES 49 MINUTES 36 SECONDS EAST, AND A CHORD LENGTH OF 290.90 FEET TO A POINT, THENCE NORTH 64 DEGREES 13 MINUTES 00 SECONDS EAST, A DISTANCE OF 150.05 FEET TO A POINT, THENCE SOUTH 15 DEGREES 47 MINUTES 00 SECONDS EAST, A DISTANCE OF 309.02 FEET TO A POINT OF CURVATURE, THENCE ALONG A CURVE IN A CLOCKWISE DIRECTION HAVING A RADIUS OF 600.00 FEET, ARC LENGTH OF 185.24 FEET, DELTA ANGLE OF 17 DEGREES 41 MINUTES 20 SECONDS, A CHORD BEARING OF SOUTH 06 DEGREES 56 MINUTES 20 SECONDS EAST, AND A CHORD LENGTH OF 184.50 FEET TO A POINT OF TANGENCY, THENCE SOUTH 01 DEGREES 54 MINUTES 20 SECONDS WEST, A DISTANCE OF 501.85 FEET TO THE TRUE POINT OF BEGINNING, SAID TRACT CONTAINS A CALCULATED AREA OF 9.77 ACRES, OR 425,456.73 SQUARE FEET MORE OR LESS.

96 DEGREES 53 MINUTES 32 SECONDS, A CHORD BEARING OF SOUTH 49 DEGREES 38 MINUTES 42 SECONDS EAST, AND A CHORD LENGTH OF 224.50 FEET TO A POINT OF COMPOUND CURVATURE, THENCE ALONG A CURVE IN A COUNTER CLOCKWISE DIRECTION HAVING A RADIUS OF 1400.00 FEET, ARC LENGTH OF 34.38 FEET, DELTA ANGLE OF 01 DEGREES 24 MINUTES 25 SECONDS, A CHORD BEARING OF NORTH 81 DEGREES 12 MINUTES 20 SECONDS EAST, AND A CHORD LENGTH OF 34.38 FEET TO A POINT, THENCE SOUTH 09 DEGREES 29 MINUTES 53 SECONDS EAST, A DISTANCE OF 238.19 FEET TO A POINT OF CURVATURE, THENCE ALONG A CURVE IN A CLOCKWISE DIRECTION HAVING A RADIUS OF 600.00 FEET, ARC LENGTH OF 119.42 FEET, DELTA ANGLE OF 11 DEGREES 24 MINUTES 12 SECONDS, A CHORD BEARING OF SOUTH 03 DEGREES 47 MINUTES 46 SECONDS EAST, AND A CHORD LENGTH OF 119.22 FEET TO A POINT OF TANGENCY, THENCE SOUTH 01 DEGREES 54 MINUTES 20 SECONDS WEST, A DISTANCE OF 195.52 FEET TO THE TRUE POINT OF BEGINNING, SAID TRACT CONTAINS A CALCULATED AREA OF 14.09 ACRES, OR 613,692.40 SQUARE FEET MORE OR LESS.

January 14, 1999  
C:\GRAINGER\AREA7.L01

**LEGAL DESCRIPTION**  
**CHANGE OF ZONE TO "R-3"**  
(AREA-7)  
REVISED 1/14/99

A LEGAL DESCRIPTION FOR CHANGE OF ZONE PURPOSES FOR A TRACT OF LAND COMPOSED OF A PORTION OF LOT 21 I.T., ALL LOCATED IN THE SOUTHEAST QUARTER OF SECTION 19, TOWNSHIP 9 NORTH, RANGE 7 EAST OF THE 6<sup>TH</sup> P.M., LANCASTER COUNTY, NEBRASKA, AND MORE PARTICULARLY DESCRIBED AS FOLLOWS:

COMMENCING AT THE SOUTHEAST CORNER OF SAID SOUTHEAST QUARTER, THENCE ON AN ASSUMED BEARING OF NORTH 88 DEGREES 05 MINUTES 40 SECONDS WEST ALONG THE SOUTH LINE OF SAID SOUTHEAST QUARTER, A DISTANCE OF 1275.00 FEET TO A POINT, THENCE NORTH 01 DEGREES 54 MINUTES 20 SECONDS EAST, A DISTANCE OF 50.00 FEET TO A POINT OF INTERSECTION WITH THE SOUTH LINE OF SAID LOT 21 I.T., SAID POINT BEING THE TRUE POINT OF BEGINNING, THENCE NORTH 88 DEGREES 05 MINUTES 40 SECONDS WEST ALONG THE SOUTH LINE OF SAID LOT 21 I.T., A DISTANCE OF 1000.00 FEET TO A POINT, THENCE NORTH 01 DEGREES 54 MINUTES 20 SECONDS EAST, A DISTANCE OF 189.87 FEET TO A POINT OF CURVATURE, THENCE ALONG A CURVE IN A CLOCKWISE DIRECTION HAVING A RADIUS OF 600.00 FEET, ARC LENGTH OF 111.92 FEET, DELTA ANGLE OF 10 DEGREES 41 MINUTES 14 SECONDS, A CHORD BEARING OF NORTH 07 DEGREES 14 MINUTES 56 SECONDS EAST, AND A CHORD LENGTH OF 111.75 FEET TO A POINT OF TANGENCY, THENCE NORTH 12 DEGREES 35 MINUTES 33 SECONDS EAST, A DISTANCE OF 231.79 FEET TO A POINT, THENCE ALONG A CURVE IN A COUNTER CLOCKWISE DIRECTION HAVING A RADIUS OF 513.05 FEET, ARC LENGTH OF 45.78 FEET, DELTA ANGLE OF 05 DEGREES 06 MINUTES 45 SECONDS, A CHORD BEARING OF SOUTH 79 DEGREES 57 MINUTES 49 SECONDS EAST, AND A CHORD LENGTH OF 45.76 FEET TO A POINT OF COMPOUND CURVATURE, THENCE ALONG A CURVE IN A COUNTER CLOCKWISE DIRECTION HAVING A RADIUS OF 150.00 FEET, ARC LENGTH OF 250.21 FEET, DELTA ANGLE OF 95 DEGREES 34 MINUTES 29 SECONDS, A CHORD BEARING OF NORTH 49 DEGREES 41 MINUTES 34 SECONDS EAST, AND A CHORD LENGTH OF 222.20 FEET TO A POINT OF TANGENCY, THENCE NORTH 01 DEGREES 54 MINUTES 20 SECONDS EAST, A DISTANCE OF 48.28 FEET TO A POINT, THENCE SOUTH 88 DEGREES 05 MINUTES 40 SECONDS EAST, A DISTANCE OF 400.99 FEET TO A POINT OF CURVATURE, THENCE ALONG A CURVE IN A COUNTER CLOCKWISE DIRECTION HAVING A RADIUS OF 1200.00 FEET, ARC LENGTH OF 65.02 FEET, DELTA ANGLE OF 03 DEGREES 06 MINUTES 16 SECONDS, A CHORD BEARING OF SOUTH 89 DEGREES 38 MINUTES 48 SECONDS EAST, AND A CHORD LENGTH OF 65.01 FEET TO A POINT, THENCE SOUTH 01 DEGREES 11 MINUTES 56 SECONDS EAST, A DISTANCE OF 40.97 FEET TO A POINT OF CURVATURE, THENCE ALONG A CURVE IN A COUNTER CLOCKWISE DIRECTION HAVING A RADIUS OF 150.00 FEET, ARC LENGTH OF 253.66 FEET, DELTA ANGLE OF

SOUTHWEST CORNER OF SAID LOT 21 I.T., THENCE SOUTH 88 DEGREES 45 MINUTES 30 SECONDS WEST ALONG THE SOUTH LINE OF SAID LOT 26 I.T., A DISTANCE OF 273.25 FEET TO THE TRUE POINT OF BEGINNING, SAID TRACT CONTAINS A CALCULATED AREA OF 10.09 ACRES, OR 439,403.08 SQUARE FEET MORE OR LESS.

January 14, 1999  
C:\GRAINGER\AREA6.L01

**LEGAL DESCRIPTION**  
**CHANGE OF ZONE TO "R-4"**  
(AREA-6)  
REVISED 1/14/99

A LEGAL DESCRIPTION FOR CHANGE OF ZONE PURPOSES FOR A TRACT OF LAND COMPOSED OF A PORTION OF LOTS 26 I.T., AND 21 I.T., ALL LOCATED IN THE SOUTH HALF OF SECTION 19, TOWNSHIP 9 NORTH, RANGE 7 EAST OF THE 6<sup>TH</sup> P.M., LANCASTER COUNTY, NEBRASKA, AND MORE PARTICULARLY DESCRIBED AS FOLLOWS:

COMMENCING AT THE SOUTHWEST QUARTER OF SAID SOUTHWEST QUARTER, THENCE ON AN ASSUMED BEARING OF NORTH 88 DEGREES 45 MINUTES 30 SECONDS EAST ALONG THE SOUTH LINE OF SAID SOUTHWEST QUARTER, A DISTANCE OF 2375.00 FEET TO A POINT, THENCE NORTH 01 DEGREES 14 MINUTES 30 SECONDS WEST, A DISTANCE OF 50.00 FEET TO A POINT OF INTERSECTION WITH THE SOUTH LINE OF SAID LOT 26 I.T., SAID POINT BEING THE TRUE POINT OF BEGINNING, THENCE NORTH 01 DEGREES 14 MINUTES 30 SECONDS WEST, A DISTANCE OF 385.20 FEET TO A POINT OF CURVATURE, THENCE ALONG A CURVE IN A CLOCKWISE DIRECTION HAVING A RADIUS OF 950.00 FEET, ARC LENGTH OF 14.01 FEET, DELTA ANGLE OF 00 DEGREES 50 MINUTES 43 SECONDS, A CHORD BEARING OF NORTH 00 DEGREES 49 MINUTES 08 SECONDS WEST, AND A CHORD LENGTH OF 14.01 FEET TO A POINT OF TANGENCY, THENCE NORTH 00 DEGREES 23 MINUTES 47 SECONDS WEST, A DISTANCE OF 335.14 FEET TO A POINT, THENCE ALONG A CURVE IN A COUNTER CLOCKWISE DIRECTION HAVING A RADIUS OF 575.00 FEET, ARC LENGTH OF 289.26 FEET, DELTA ANGLE OF 28 DEGREES 49 MINUTES 24 SECONDS, A CHORD BEARING OF NORTH 75 DEGREES 11 MINUTES 31 SECONDS EAST, AND A CHORD LENGTH OF 286.22 FEET TO A POINT OF TANGENCY, THENCE NORTH 60 DEGREES 46 MINUTES 49 SECONDS EAST, A DISTANCE OF 126.04 FEET TO A POINT, THENCE ALONG A CURVE IN A COUNTER CLOCKWISE DIRECTION HAVING A RADIUS OF 513.05 FEET, ARC LENGTH OF 429.42 FEET, DELTA ANGLE OF 47 DEGREES 57 MINUTES 20 SECONDS. A CHORD BEARING OF SOUTH 53 DEGREES 25 MINUTES 47 SECONDS EAST, AND A CHORD LENGTH OF 416.99 FEET TO A POINT, THENCE SOUTH 12 DEGREES 35 MINUTES 33 SECONDS WEST, A DISTANCE OF 231.79 FEET TO A POINT OF CURVATURE, THENCE ALONG A CURVE IN A COUNTER CLOCKWISE DIRECTION HAVING A RADIUS OF 600.00 FEET, ARC LENGTH OF 111.92 FEET, DELTA ANGLE OF 10 DEGREES 41 MINUTES 14 SECONDS, A CHORD BEARING OF SOUTH 07 DEGREES 14 MINUTES 56 SECONDS WEST, AND A CHORD LENGTH OF 111.75 FEET TO A POINT OF TANGENCY, THENCE SOUTH 01 DEGREES 54 MINUTES 20 SECONDS WEST, A DISTANCE OF 189.87 FEET TO A POINT OF INTERSECTION WITH THE SOUTH LINE OF SAID LOT 21 I.T., THENCE NORTH 88 DEGREES 05 MINUTES 40 SECONDS WEST ALONG THE SOUTH LINE OF SAID LOT 21 I.T., A DISTANCE OF 368.99 FEET TO THE

**LEGAL DESCRIPTION**  
**CHANGE OF ZONE TO "R-3"**  
(AREA-5)  
REVISED 1/14/99

A LEGAL DESCRIPTION FOR CHANGE OF ZONE PURPOSES FOR A TRACT OF LAND COMPOSED OF A PORTION OF LOTS 25 I.T., AND 26 I.T., ALL LOCATED IN THE SOUTHWEST QUARTER OF SECTION 19, TOWNSHIP 9 NORTH, RANGE 7 EAST OF THE 6<sup>TH</sup> P.M., LANCASTER COUNTY, NEBRASKA, AND MORE PARTICULARLY DESCRIBED AS FOLLOWS:

COMMENCING AT THE SOUTHWEST CORNER OF SAID SOUTHWEST QUARTER, THENCE ON AN ASSUMED BEARING OF NORTH 88 DEGREES 45 MINUTES 30 SECONDS EAST ALONG THE SOUTH LINE OF SAID SOUTHWEST QUARTER, A DISTANCE OF 1554.81 FEET TO A POINT, THENCE NORTH 01 DEGREES 14 MINUTES 30 SECONDS WEST, A DISTANCE OF 50.00 FEET TO A POINT OF INTERSECTION WITH THE SOUTH LINE OF SAID LOT 26 I.T., SAID POINT BEING THE TRUE POINT OF BEGINNING, THENCE NORTH 01 DEGREES 14 MINUTES 30 SECONDS WEST, A DISTANCE OF 658.86 FEET TO A POINT OF CURVATURE, THENCE ALONG A CURVE IN A CLOCKWISE DIRECTION HAVING A RADIUS OF 300.00 FEET, ARC LENGTH OF 211.66 FEET, DELTA ANGLE OF 40 DEGREES 25 MINUTES 25 SECONDS, A CHORD BEARING OF NORTH 18 DEGREES 58 MINUTES 13 SECONDS EAST, AND A CHORD LENGTH OF 207.30 FEET TO A POINT OF TANGENCY, THENCE NORTH 39 DEGREES 10 MINUTES 56 SECONDS EAST, A DISTANCE OF 190.07 FEET TO A POINT, THENCE SOUTH 50 DEGREES 49 MINUTES 04 SECONDS EAST, A DISTANCE OF 349.41 FEET TO A POINT OF CURVATURE, THENCE ALONG A CURVE IN A COUNTER CLOCKWISE DIRECTION HAVING A RADIUS OF 575.00 FEET, ARC LENGTH OF 397.20 FEET, DELTA ANGLE OF 39 DEGREES 34 MINUTES 42 SECONDS, A CHORD BEARING OF SOUTH 70 DEGREES 36 MINUTES 26 SECONDS EAST, AND A CHORD LENGTH OF 389.34 FEET TO A POINT, THENCE SOUTH 00 DEGREES 23 MINUTES 47 SECONDS EAST, A DISTANCE OF 335.14 FEET TO A POINT OF CURVATURE, THENCE ALONG A CURVE IN A COUNTER CLOCKWISE DIRECTION HAVING A RADIUS OF 950.00 FEET, ARC LENGTH OF 14.01 FEET, DELTA ANGLE OF 00 DEGREES 50 MINUTES 43 SECONDS, A CHORD BEARING OF SOUTH 00 DEGREES 49 MINUTES 08 SECONDS EAST, AND A CHORD LENGTH OF 14.01 FEET TO A POINT OF TANGENCY, THENCE SOUTH 01 DEGREES 14 MINUTES 30 SECONDS EAST, A DISTANCE OF 285.20 FEET TO A POINT OF INTERSECTION WITH THE SOUTH LINE OF SAID LOT 26 I.T., THENCE SOUTH 88 DEGREES 45 MINUTES 30 SECONDS WEST ALONG THE SOUTH LINE OF SAID LOT 26 I.T., A DISTANCE OF 820.19 FEET TO THE TRUE POINT OF BEGINNING, SAID TRACT CONTAINS A CALCULATED AREA OF 14.95 ACRES. OR 651,086.62 SQUARE FEET MORE OR LESS.

January 14, 1999  
F:\Projects\970368\MIKEREVIS\PARCELS.L01

THENCE SOUTH 60 DEGREES 46 MINUTES 49 SECONDS WEST, A DISTANCE OF 126.04 FEET TO A POINT OF CURVATURE, THENCE ALONG A CURVE IN A CLOCKWISE DIRECTION HAVING A RADIUS OF 575.00 FEET, ARC LENGTH OF 686.46 FEET, DELTA ANGLE OF 68 DEGREES 24 MINUTES 07 SECONDS, A CHORD BEARING OF NORTH 85 DEGREES 01 MINUTES 08 SECONDS WEST, AND A CHORD LENGTH OF 646.41 FEET TO A POINT OF TANGENCY, THENCE NORTH 50 DEGREES 49 MINUTES 04 SECONDS WEST, A DISTANCE OF 664.94 FEET TO A POINT OF CURVATURE, THENCE ALONG A CURVE IN A COUNTER CLOCKWISE DIRECTION HAVING A RADIUS OF 600.00 FEET, ARC LENGTH OF 606.94 FEET, DELTA ANGLE OF 57 DEGREES 57 MINUTES 31 SECONDS, A CHORD BEARING OF NORTH 79 DEGREES 47 MINUTES 50 SECONDS WEST, AND A CHORD LENGTH OF 581.39 FEET TO A POINT, THENCE NORTH 00 DEGREES 02 MINUTES 08 SECONDS WEST, A DISTANCE OF 1254.25 FEET TO THE TRUE POINT OF BEGINNING SAID TRACT CONTAINS A CALCULATED AREA OF 87.45 ACRES, OR 3,809,361.60 SQUARE FEET.

January 14, 1999

F:\Projects\970368\MIKEREVIS\PARCEL2.L01

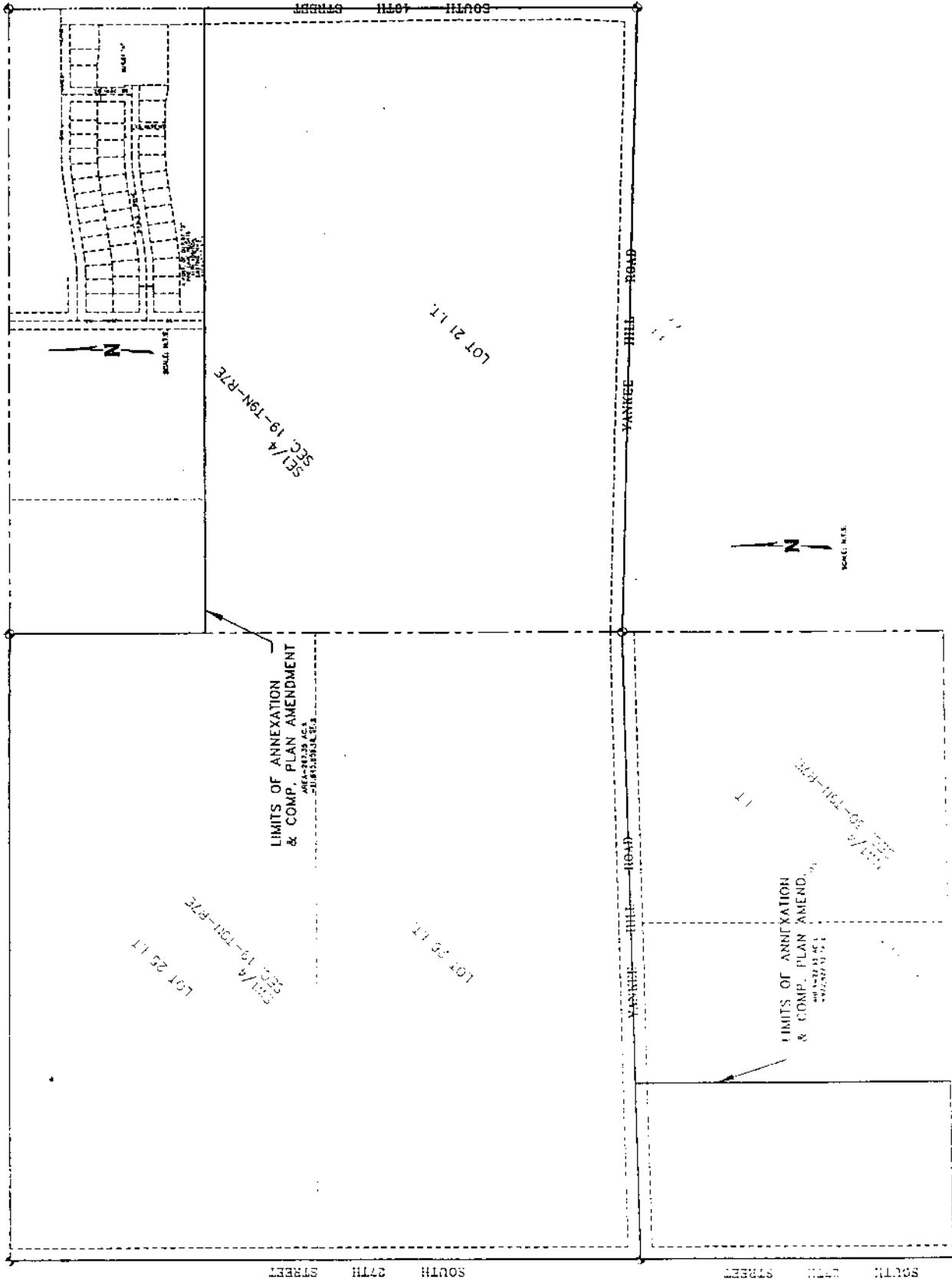
**LEGAL DESCRIPTION**  
**CHANGE OF ZONE TO "R-3"**  
(AREA-2)  
REVISED 1/14/99

A LEGAL DESCRIPTION FOR CHANGE OF ZONE PURPOSES FOR A TRACT OF LAND COMPOSED OF A PORTION OF LOTS 21 I.T., LOT 25 I.T., AND LOT 26 I.T., ALL LOCATED IN THE SOUTH HALF OF SECTION 19, TOWNSHIP 9 NORTH, RANGE 7 EAST OF THE 6<sup>TH</sup> P.M., LANCASTER COUNTY, NEBRASKA, AND MORE PARTICULARLY DESCRIBED AS FOLLOWS:

COMMENCING AT THE NORTHWEST CORNER OF SAID SOUTHWEST QUARTER, THENCE ON AN ASSUMED BEARING OF SOUTH 89 DEGREES 35 MINUTES 44 SECONDS EAST ALONG THE NORTH LINE OF SAID SOUTHWEST QUARTER, A DISTANCE OF 910.67 FEET TO A POINT, SAID POINT BEING THE TRUE POINT OF BEGINNING, THENCE CONTINUING SOUTH 89 DEGREES 35 MINUTES 44 SECONDS EAST ALONG THE NORTH LINE OF SAID SOUTHWEST QUARTER, A DISTANCE OF 1735.79 FEET TO THE NORTHEAST CORNER OF SAID SOUTHWEST QUARTER, THENCE SOUTH 00 DEGREES 02 MINUTES 27 SECONDS EAST ALONG THE EAST LINE OF SAID SOUTHWEST QUARTER, A DISTANCE OF 815.01 FEET TO THE NORTHWEST CORNER OF SAID LOT 21 I.T., THENCE SOUTH 89 DEGREES 35 MINUTES 16 SECONDS EAST ALONG THE NORTH LINE OF SAID LOT 21 I.T., A DISTANCE OF 1795.11 FEET TO A POINT, THENCE SOUTH 00 DEGREES 05 MINUTES 36 SECONDS WEST, A DISTANCE OF 317.52 FEET TO A POINT OF CURVATURE, THENCE ALONG A CURVE IN A CLOCKWISE DIRECTION HAVING A RADIUS OF 175.00 FEET, ARC LENGTH OF 115.05 FEET, DELTA ANGLE OF 37 DEGREES 40 MINUTES 04 SECONDS, A CHORD BEARING OF SOUTH 18 DEGREES 55 MINUTES 39 SECONDS WEST, AND A CHORD LENGTH OF 112.99 FEET TO A POINT OF TANGENCY, THENCE SOUTH 37 DEGREES 45 MINUTES 41 SECONDS WEST, A DISTANCE OF 301.11 FEET TO A POINT, THENCE ALONG A CURVE IN A COUNTER CLOCKWISE DIRECTION HAVING A RADIUS OF 506.47 FEET, ARC LENGTH OF 316.95 FEET, DELTA ANGLE OF 35 DEGREES 51 MINUTES 21 SECONDS, A CHORD BEARING OF NORTH 70 DEGREES 10 MINUTES 00 SECONDS WEST, AND A CHORD LENGTH OF 311.80 FEET TO A POINT OF TANGENCY, THENCE NORTH 88 DEGREES 05 MINUTES 40 SECONDS WEST, A DISTANCE OF 597.87 FEET TO A POINT OF CURVATURE, THENCE ALONG A CURVE IN A COUNTER CLOCKWISE DIRECTION HAVING A RADIUS OF 950.00 FEET, ARC LENGTH OF 477.80 FEET, DELTA ANGLE OF 28 DEGREES 49 MINUTES 00 SECONDS, A CHORD BEARING OF SOUTH 77 DEGREES 29 MINUTES 49 SECONDS WEST, AND A CHORD LENGTH OF 472.78 FEET TO A POINT OF TANGENCY, THENCE SOUTH 63 DEGREES 05 MINUTES 19 SECONDS WEST, A DISTANCE OF 35.22 FEET TO A POINT OF CURVATURE, THENCE ALONG A CURVE IN A CLOCKWISE DIRECTION HAVING A RADIUS OF 200.00 FEET, ARC LENGTH OF 323.03 FEET, DELTA ANGLE OF 92 DEGREES 32 MINUTES 26 SECONDS, A CHORD BEARING OF SOUTH 16 DEGREES 49 MINUTES 06 SECONDS WEST, AND A CHORD LENGTH OF 289.04 FEET TO A POINT.







Attachment "C"

FEET TO A POINT OF TANGENCY, THENCE SOUTH 45 DEGREES 13 MINUTES 22 SECONDS EAST ALONG THE CENTER LINE OF RIGHT-OF-WAY FOR YANKEE HILL ROAD RIGHT-OF-WAY, A DISTANCE OF 348.97 FEET TO A POINT OF CURVATURE, THENCE ALONG A CURVE IN A COUNTER CLOCKWISE DIRECTION HAVING A RADIUS OF 849.02 FEET, ARC LENGTH OF 657.46 FEET, DELTA ANGLE OF 44 DEGREES 22 MINUTES 05 SECONDS, A CHORD BEARING OF SOUTH 67 DEGREES 24 MINUTES 25 SECONDS EAST ALONG THE CENTERLINE OF RIGHT-OF-WAY FOR YANKEE HILL ROAD, AND A CHORD LENGTH OF 641.16 FEET TO A POINT OF TANGENCY, THENCE SOUTH 89 DEGREES 39 MINUTES 00 SECONDS EAST ALONG THE NORTH LINE OF THE NORTHWEST QUARTER OF SECTION 25, A DISTANCE OF 1359.28 FEET TO THE NORTH QUARTER CORNER OF SAID SECTION 25, THENCE SOUTH 89 DEGREES 38 MINUTES 45 SECONDS EAST ALONG THE NORTH LINE OF THE NORTHEAST QUARTER OF SAID SECTION 25, A DISTANCE OF 2631.19 FEET TO THE TRUE POINT OF BEGINNING, SAID TRACT CONTAINS A CALCULATED AREA OF 434.36 ACRES, OR 18,921,058.96 SQUARE FEET MORE OR LESS.

AUGUST 18, 1998  
C:\GRAINGER\AREA14.L01

**LEGAL DESCRIPTION  
ANNEXATION AND COMP. PLAN AMENDMENT**

A LEGAL DESCRIPTION FOR ANNEXATION AND COMP. PLAN AMENDMENT PURPOSES FOR A TRACT OF LAND COMPOSED OF LOT 62 I.T., A PORTION OF YANKEE HILL ROAD RIGHT-OF-WAY, AND A PORTION OF SOUTH 14<sup>TH</sup> STREET RIGHT-OF-WAY, ALL LOCATED IN THE SOUTHWEST QUARTER OF SECTION 24, TOWNSHIP 9 NORTH, RANGE 6 EAST, OF THE 6<sup>TH</sup> P.M., TOGETHER WITH LOTS 21 I.T., 1 I.T., 24 I.T., 4 I.T., 18 I.T., 14 I.T., 16 I.T., 28 I.T., 27 I.T., 29 I.T., 9 I.T., 30 I.T., A PORTION OF THE NORTH HALF OF THE SOUTH HALF OF THE NORTHWEST QUARTER, A PORTION OF THE NORTHEAST QUARTER OF THE SOUTHEAST QUARTER, A PORTION OF YANKEE HILL ROAD RIGHT-OF-WAY, A PORTION OF SOUTH 27<sup>TH</sup> STREET RIGHT-OF-WAY, AND A PORTION OF ROKEBY ROAD RIGHT-OF-WAY, ALL LOCATED IN SECTION 25, TOWNSHIP 9 NORTH, RANGE 6 EAST OF THE 6<sup>TH</sup> P.M., LANCASTER COUNTY, NEBRASKA, AND MORE PARTICULARLY DESCRIBED AS FOLLOWS:

COMMENCING AT THE NORTHEAST CORNER OF SAID SECTION 25, SAID POINT BEING THE TRUE POINT OF BEGINNING, THENCE ON AN ASSUMED BEARING OF SOUTH 00 DEGREES 03 MINUTES 17 SECONDS EAST ALONG THE EAST LINE OF THE NORTHEAST QUARTER OF SAID SECTION 25, A DISTANCE OF 2649.48 FEET TO THE EAST QUARTER CORNER OF SAID SECTION 25, THENCE SOUTH 00 DEGREES 00 MINUTES 42 SECONDS EAST ALONG THE EAST LINE OF THE SOUTHEAST QUARTER OF SAID SECTION 25, A DISTANCE OF 2643.74 FEET TO THE SOUTHEAST CORNER OF SAID SECTION 25, THENCE NORTH 89 DEGREES 38 MINUTES 49 SECONDS WEST ALONG THE SOUTH LINE OF THE SOUTHEAST QUARTER OF SAID SECTION 25, A DISTANCE OF 2070.16 FEET TO A POINT OF INTERSECTION WITH THE EAST RIGHT-OF-WAY LINE OF THE BURLINGTON NORTHERN RAILROAD, THENCE NORTH 28 DEGREES 36 MINUTES 46 SECONDS WEST ALONG THE EAST RIGHT-OF-WAY LINE OF THE BURLINGTON NORTHERN RAILROAD, A DISTANCE OF 6049.81 FEET TO A POINT OF INTERSECTION WITH THE NORTH LINE OF THE NORTHWEST QUARTER OF SAID SECTION 25, THENCE NORTH 28 DEGREES 36 MINUTES 46 SECONDS WEST ALONG THE EAST RIGHT-OF-WAY LINE OF THE BURLINGTON NORTHERN RAILROAD, A DISTANCE OF 554.85 FEET TO A POINT OF INTERSECTION WITH THE WEST LINE OF THE SOUTHWEST QUARTER OF SECTION 24. THENCE NORTH 00 DEGREES 10 MINUTES 31 SECONDS WEST ALONG THE WEST LINE OF THE SOUTHWEST QUARTER OF SAID SECTION 24, A DISTANCE OF 114.78 FEET TO A POINT OF INTERSECTION WITH THE CENTER LINE OF RIGHT-OF-WAY FOR YANKEE HILL ROAD, THENCE NORTH 89 DEGREES 49 MINUTES 23 SECONDS EAST ALONG THE CENTER LINE OF RIGHT-OF-WAY FOR YANKEE HILL ROAD, A DISTANCE OF 117.27 FEET TO A POINT OF CURVATURE, THENCE ALONG A CURVE IN A CLOCKWISE DIRECTION HAVING A RADIUS OF 400.00 FEET, ARC LENGTH OF 313.84 FEET, DELTA ANGLE OF 44 DEGREES 57 MINUTES 15 SECONDS, A CHORD BEARING OF SOUTH 67 DEGREES 41 MINUTES 59 SECONDS EAST ALONG THE CENTER LINE OF RIGHT-OF-WAY FOR YANKEE HILL ROAD, AND A CHORD LENGTH OF 305.85

COMMENCING AT THE NORTHWEST CORNER OF SAID NORTHWEST QUARTER, SAID POINT BEING THE TRUE POINT OF BEGINNING, THENCE ON AN ASSUMED BEARING OF NORTH 88 DEGREES 45 MINUTES 30 SECONDS EAST ALONG THE NORTH LINE OF SAID NORTHWEST QUARTER, A DISTANCE OF 732.01 FEET TO A POINT, THENCE SOUTH 00 DEGREES 03 MINUTES 39 SECONDS EAST, A DISTANCE OF 1333.71 FEET TO A POINT OF INTERSECTION WITH THE SOUTH LINE OF SAID LOT 28 I.T., THENCE SOUTH 89 DEGREES 28 MINUTES 18 SECONDS WEST ALONG THE SOUTH LINE OF SAID LOT 28 I.T., AND ITS EXTENSION, A DISTANCE OF 732.00 FEET TO A POINT OF INTERSECTION WITH THE WEST LINE OF SAID NORTHWEST QUARTER, THENCE NORTH 00 DEGREES 03 MINUTES 19 SECONDS WEST ALONG THE WEST LINE OF SAID NORTHWEST QUARTER, A DISTANCE OF 1324.60 FEET TO THE TRUE POINT OF BEGINNING, SAID TRACT CONTAINS A CALCULATED AREA OF 22.33 ACRES, OR 972,827.39 SQUARE FEET MORE OR LESS.

DECEMBER 30, 1998  
C:\GRAINGER\AREA13.L01

**LEGAL DESCRIPTION**  
**CHANGE OF ZONE TO "0-3"**  
(AREA-15)  
REVISED 1/14/99

A LEGAL DESCRIPTION FOR CHANGE OF ZONE PURPOSES FOR A TRACT OF LAND COMPOSED OF LOT 62 I.T., LOCATED IN THE SOUTHWEST QUARTER OF SECTION 24, TOWNSHIP 9 NORTH, RANGE 6 EAST OF THE 6<sup>TH</sup> P.M., A PORTION OF LOT 21 I.T., A PORTION OF LOT 1 I.T., A PORTION OF LOT 24 I.T., A PORTION OF LOT 4 I.T., A PORTION OF THE NORTH HALF OF THE SOUTH HALF OF THE NORTHWEST QUARTER OF SECTION 25, AND A PORTION OF LOT 18 I.T., ALL LOCATED IN THE NORTHWEST QUARTER OF SECTION 25, TOWNSHIP 9 NORTH, RANGE 6 EAST OF THE 6<sup>TH</sup> P.M., LANCASTER COUNTY, NEBRASKA, AND MORE PARTICULARLY DESCRIBED AS FOLLOWS:

COMMENCING AT THE NORTHWEST CORNER OF SAID LOT 62 I.T., SAID POINT BEING THE TRUE POINT OF BEGINNING, THENCE ON AN ASSUMED BEARING OF NORTH 89 DEGREES 49 MINUTES 23 SECONDS EAST ALONG THE NORTH LINE OF SAID LOT 62 I.T., A DISTANCE OF 117.27 FEET TO A POINT OF CURVATURE, THENCE ALONG A CURVE IN A CLOCKWISE DIRECTION HAVING A RADIUS OF 350.00 FEET, ARC LENGTH OF 274.61 FEET, DELTA ANGLE OF 44 DEGREES 57 MINUTES 15 SECONDS, A CHORD BEARING OF SOUTH 67 DEGREES 42 MINUTES 00 SECONDS EAST ALONG A NORTH LINE OF SAID LOT 62 I.T., AND A CHORD LENGTH OF 267.62 FEET TO A POINT OF TANGENCY, THENCE SOUTH 45 DEGREES 13 MINUTES 22 SECONDS EAST ALONG THE NORTHEAST LINE OF SAID LOT 62 I.T., A DISTANCE OF 348.97 FEET TO A POINT OF CURVATURE, THENCE ALONG A CURVE IN A COUNTER CLOCKWISE DIRECTION HAVING A RADIUS OF 898.83 FEET, ARC LENGTH OF 395.91 FEET, DELTA ANGLE OF 25 DEGREES 14 MINUTES 15 SECONDS, A CHORD BEARING OF SOUTH 57 DEGREES 50 MINUTES 29 SECONDS EAST, AND A CHORD LENGTH OF 392.72 FEET TO A POINT, THENCE NORTH 89 DEGREES 39 MINUTES 00 SECONDS WEST, A DISTANCE OF 310.30 FEET TO A POINT, THENCE SOUTH 37 DEGREES 05 MINUTES 46 SECONDS EAST, A DISTANCE OF 324.94 FEET TO A POINT, THENCE NORTH 61 DEGREES 23 MINUTES 14 SECONDS EAST, A DISTANCE OF 155.83 FEET TO A POINT, THENCE SOUTH 80 DEGREES 53 MINUTES 32 SECONDS EAST, A DISTANCE OF 870.14 FEET TO A POINT, THENCE SOUTH 47 DEGREES 50 MINUTES 11 SECONDS EAST, A DISTANCE OF 394.72 FEET TO A POINT, THENCE ALONG A CURVE IN A COUNTER CLOCKWISE DIRECTION HAVING A RADIUS OF 225.00 FEET, ARC LENGTH OF 277.63 FEET, DELTA ANGLE OF 70 DEGREES 41 MINUTES 53 SECONDS, A CHORD BEARING OF SOUTH 06 DEGREES 48 MINUTES 53 SECONDS WEST, AND A CHORD LENGTH OF 260.35 FEET TO A POINT OF TANGENCY. THENCE SOUTH 28 DEGREES 32 MINUTES 04 SECONDS EAST, A DISTANCE OF 201.55 FEET TO A POINT OF CURVATURE. THENCE ALONG A CURVE IN A CLOCKWISE DIRECTION HAVING A RADIUS OF 750.00 FEET, ARC LENGTH OF 268.81 FEET, DELTA ANGLE OF 20 DEGREES 32 MINUTES 08 SECONDS, A CHORD BEARING

A NORTH LINE OF SAID LOT 30 I.T., A DISTANCE OF 17.00 FEET TO A POINT OF DEFLECTION, THENCE SOUTH 00 DEGREES 00 MINUTES 42 SECONDS EAST ALONG THE EAST LINE OF SAID LOT 30 I.T., A DISTANCE OF 300.00 FEET TO A POINT OF DEFLECTION, THENCE SOUTH 89 DEGREES 59 MINUTES 18 SECONDS WEST ALONG A SOUTH LINE OF SAID LOT 30 I.T., A DISTANCE OF 17.00 FEET TO A POINT OF DEFLECTION, THENCE SOUTH 00 DEGREES 00 MINUTES 42 SECONDS EAST ALONG THE EAST LINE OF SAID LOT 30 I.T., A DISTANCE OF 1320.12 FEET TO THE SOUTHEAST CORNER OF SAID LOT 30 I.T., THENCE NORTH 89 DEGREES 38 MINUTES 49 SECONDS WEST ALONG THE SOUTH LINE OF SAID LOTS 30 I.T., AND 9 I.T., A DISTANCE OF 2038.22 FEET TO THE SOUTHWEST CORNER OF SAID LOT 9 I.T., THENCE NORTH 28 DEGREES 36 MINUTES 46 SECONDS WEST ALONG THE WEST LINE OF SAID LOTS 9 I.T., 16 I.T., 14 I.T., 18 I.T., A PORTION OF THE NORTH HALF OF SOUTH HALF OF SAID NORTHWEST QUARTER, LOTS 24 I.T., AND 21 I.T., A DISTANCE OF 6012.09 FEET TO THE TRUE POINT OF BEGINNING, SAID TRACT CONTAINS A CALCULATED AREA OF 381.21 ACRES, OR 16,605,617.04 SQUARE FEET MORE OR LESS.

JANUARY 14, 1999

F:\Projects\970368\MIKEREVIS\PARCEL14.L01