



# Belmont Neighborhood Redevelopment Plan

City of Lincoln

Community Open House  
13 March 2025





# Introduction

- Overall process / schedule
- Feedback from:
  - Community Open House #1
  - Online survey
  - Stakeholder Meeting
  - Data analysis
- Request for additional input:
  - Prioritizing goals for the neighborhood

# Agenda

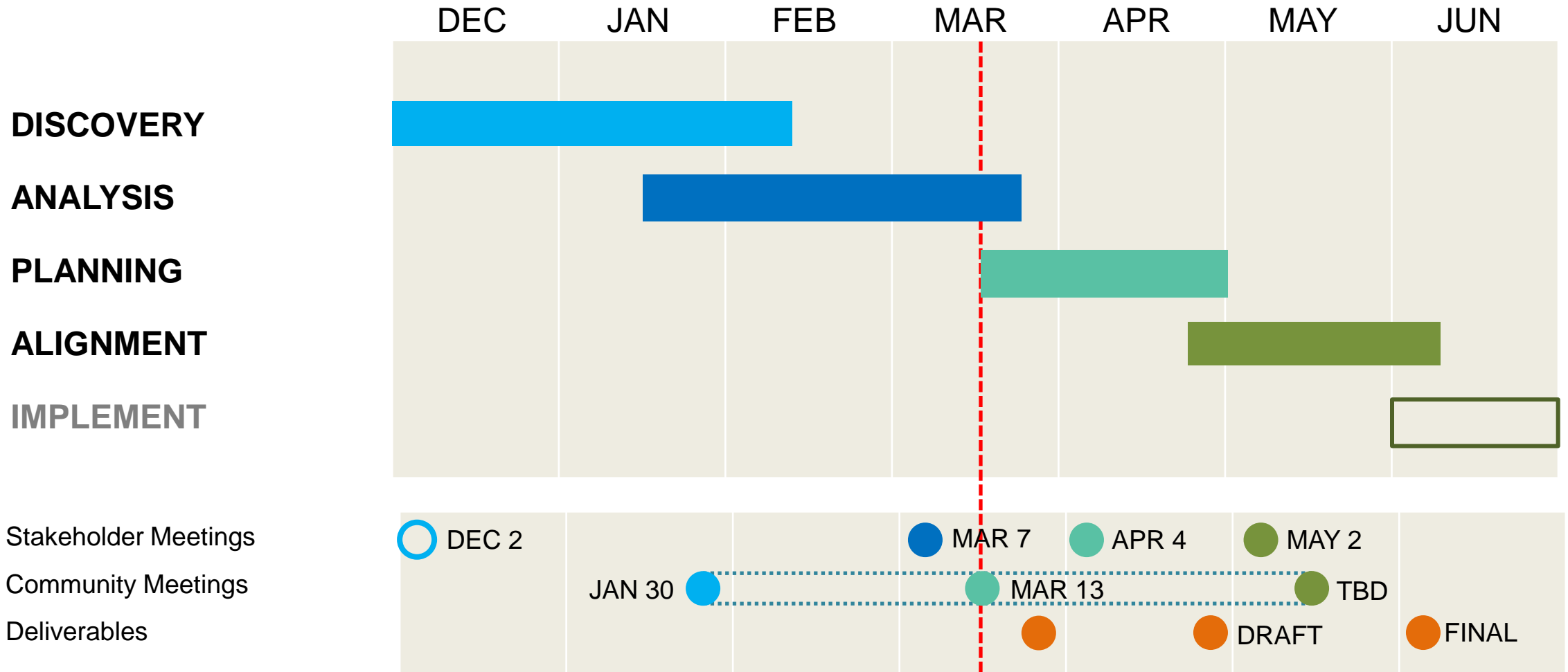
## Community Open House

Emily Koopmann  
 Dwight Thiemann  
 Elizabeth Schuster/Randall Jones  
 Kim Rosenthal  
 Nirmaya Tamang  
 Karlie Cluff  
 BJ Day  
 Cassie Frehse  
 Virginia Geiger  
 Bobbie Ehrlich  
 Brad Meyer  
 Katie Nystrom  
 Emily Kluver  
 Muzhdah Nawabzada  
 Deb Buck/Katie Chatters  
 Susan Steider  
 Pam Miller  
 Mary Barton  
 Rafa Ahmed  
 Rachel King  
 Dan Pazaynt  
 Meghan Hornkohl

Belmont Community Center ● ●  
 Barnabas Community  
 Belmont Aging Partners  
 Belmont Elementary School ●  
 Belmont Family Literacy Parent  
 Belmont Plaza/Connecting Pointe Church  
 Belmont Community Learning Center ●  
 Belmont Neighborhood Resident ●  
 Belmont Neighborhood Resident ●  
 Belmont Teacher/Community Member ●  
 Bluestem Health  
 Campbell Elementary School  
 Community Health Endowment ●  
 Community Member  
 Educare Lincoln ●  
 Eiseley Library  
 Holy Savior Lutheran Church ●  
 Landon's Neighborhood Resident  
 North Star High School Student/BCC Staff Member  
 North Star High School  
 Parks and Recreation ●  
 Rafa Roofing and Construction/Community Member

● SNAC Members  
 ● Core Team Members

# Stakeholder Group



# Current Schedule

# Discovery

## Charts/Diagrams

### Demographics

- Age
- Race / Ethnicity
- Household Incomes
- Median Household Incomes

### Housing

- Housing Trend
- Housing Costs
- Housing Occupancy

### Transportation

- Vehicles Available Per Household
- Means of Transportation to Work

## Maps

Regional Context

Land Use

Zoning

Public Transit

Bike + Trails Network

Complete Street Projects

Sidewalks

Crosswalks + Signaling

Traffic Accidents

Medical Facilities

FEMA Floodplain

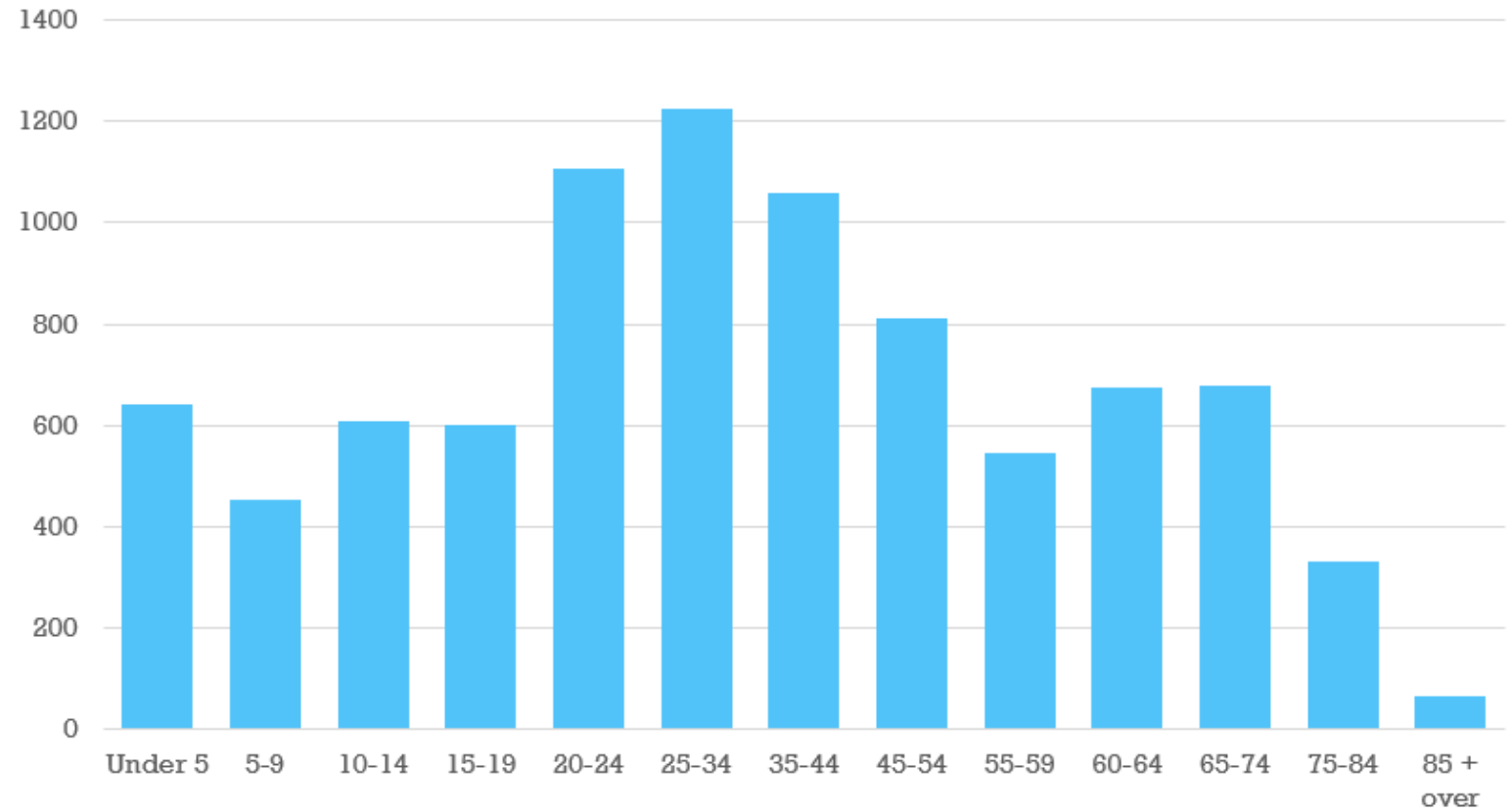
Buildings in Floodplain

Impervious Surfaces

# Profile Diagrams / Mapping

# Neighborhood Profile

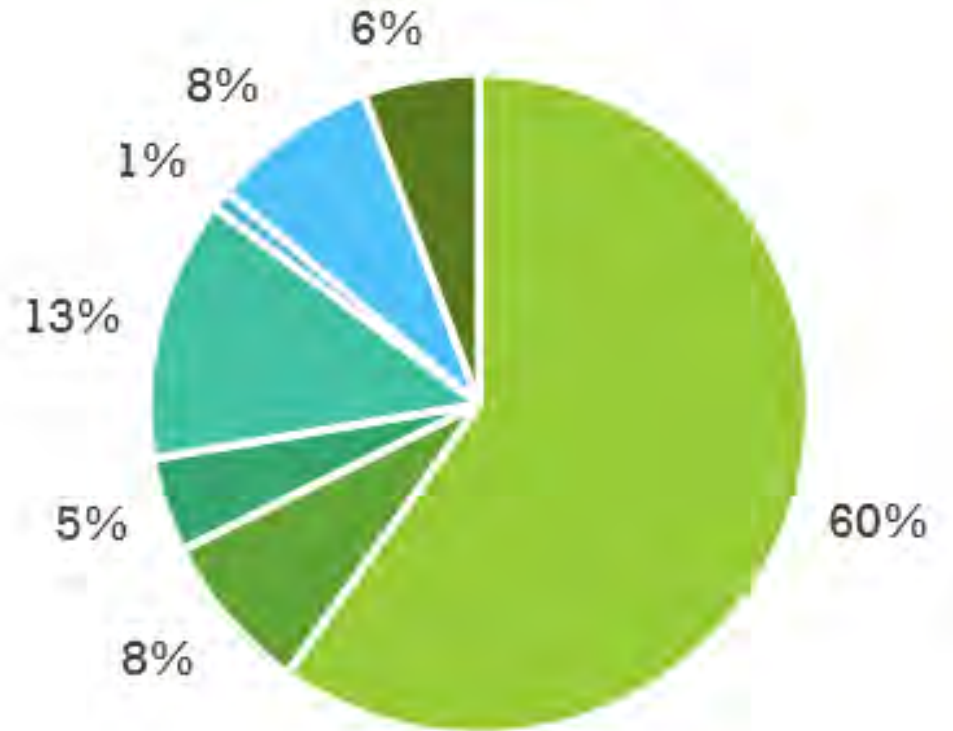




# Age

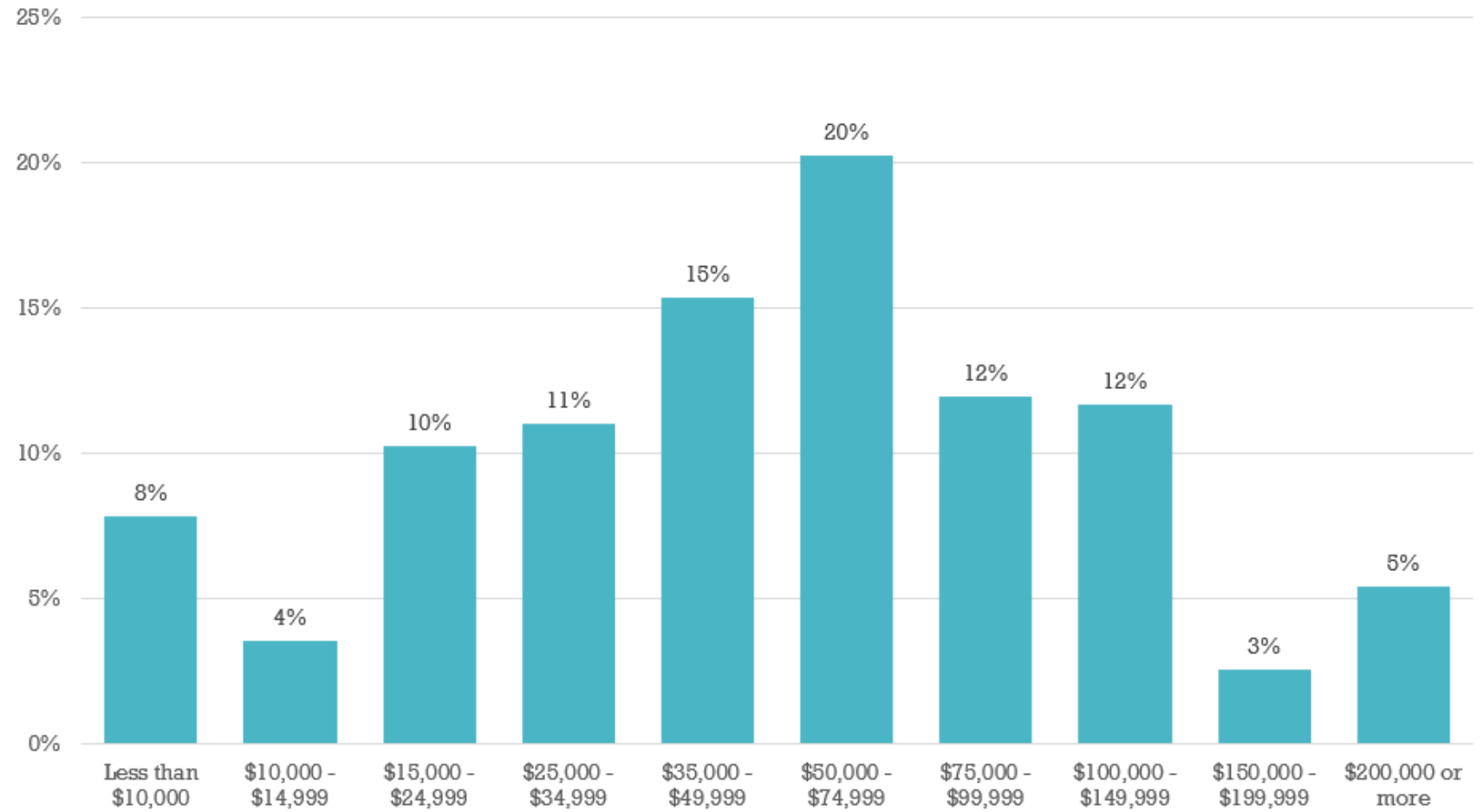
Belmont + Landon's Census Data

- White
- Black
- Asian
- Hispanic
- American Indian
- Two or More Races
- Other Race



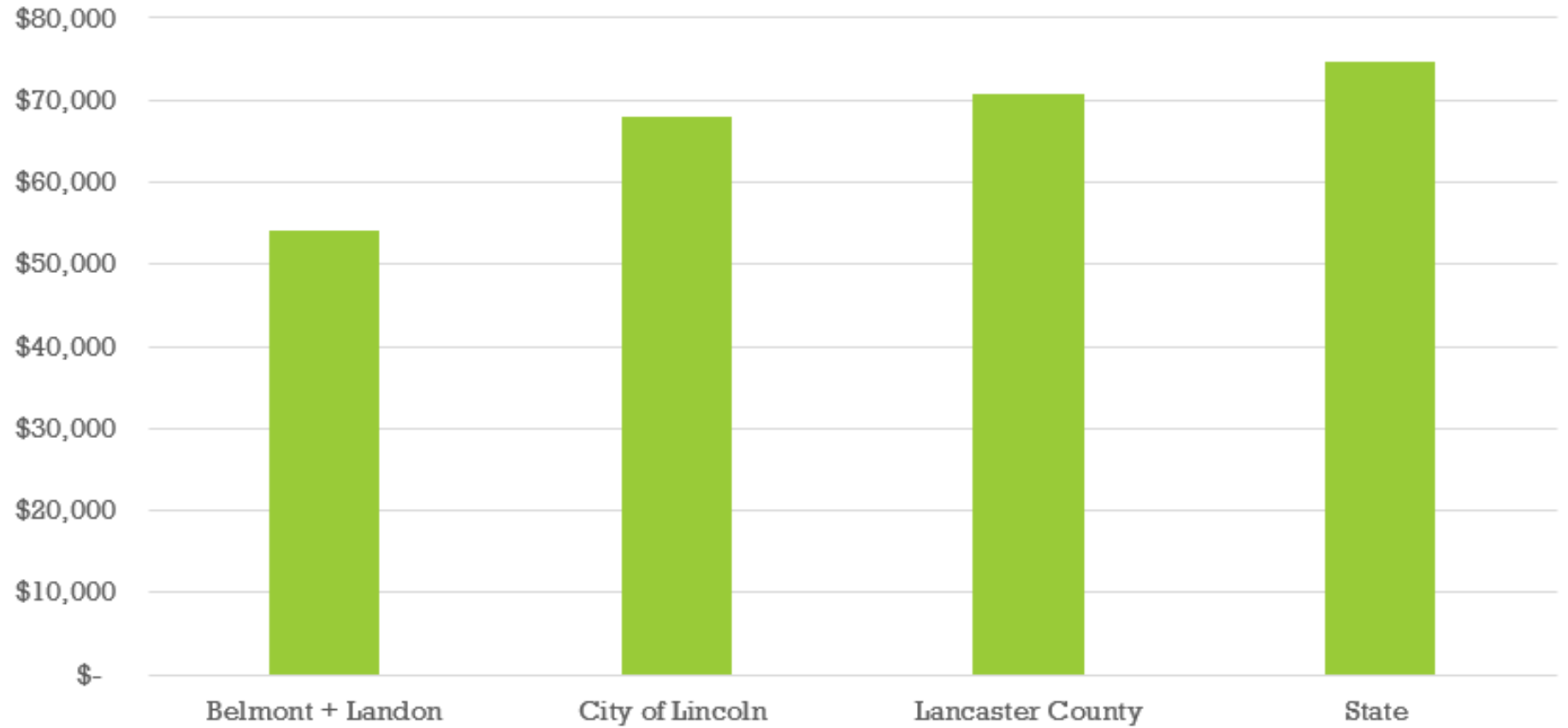
## Race / Ethnicity

Belmont + Landon's Census Data



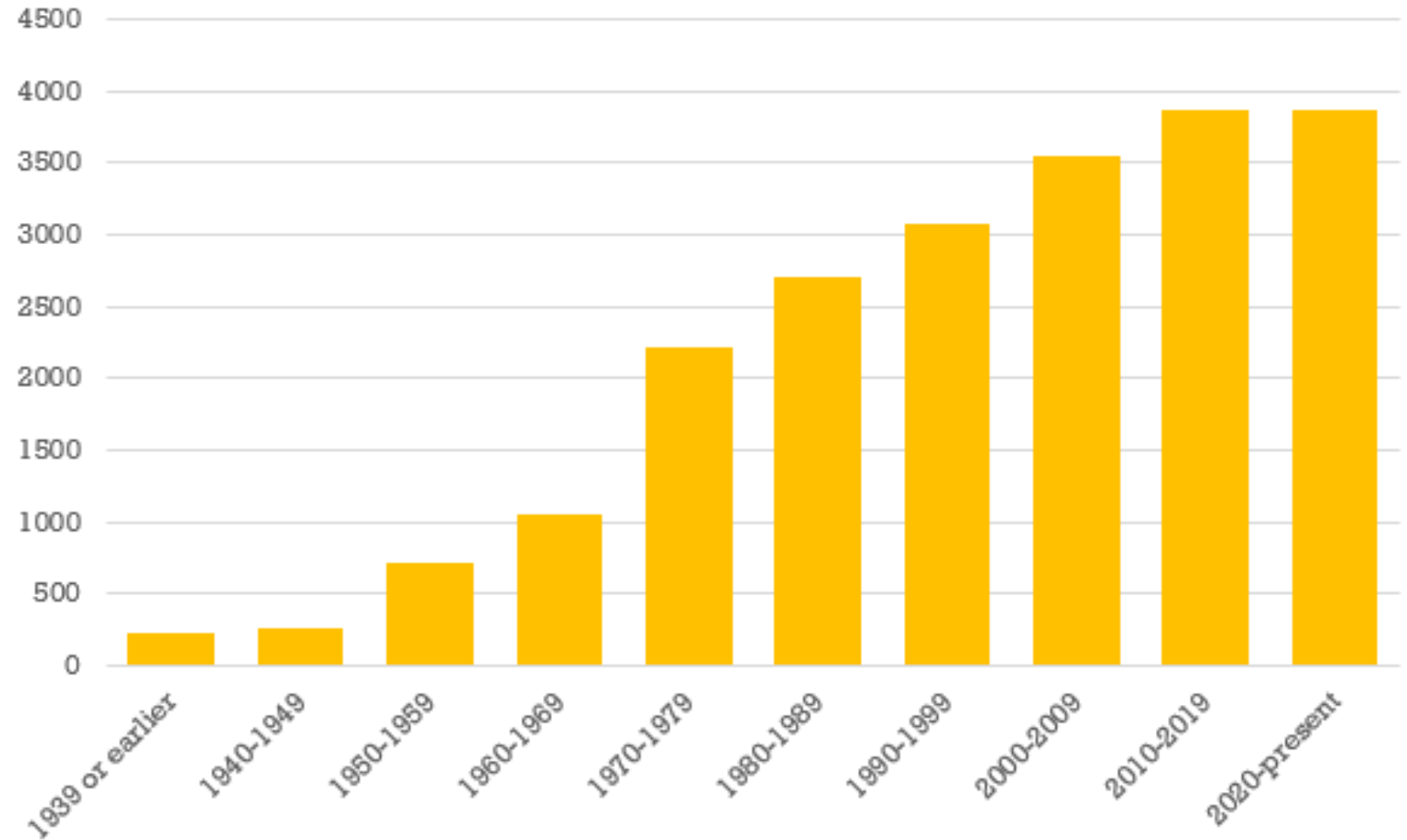
# Household Incomes

Belmont + Landon's Census Data



# Median Household Incomes

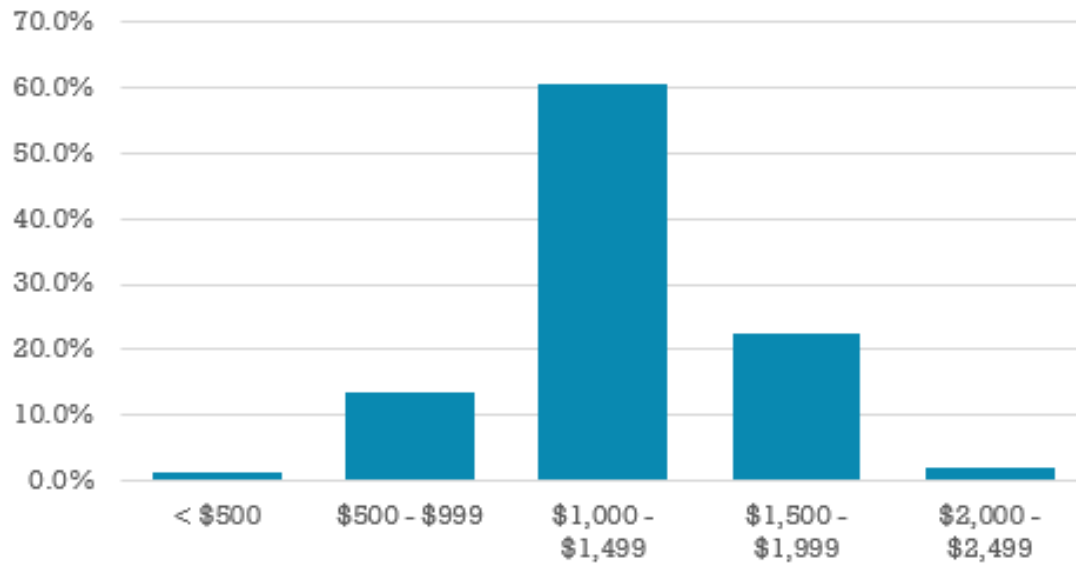
Neighborhood / City / County / State



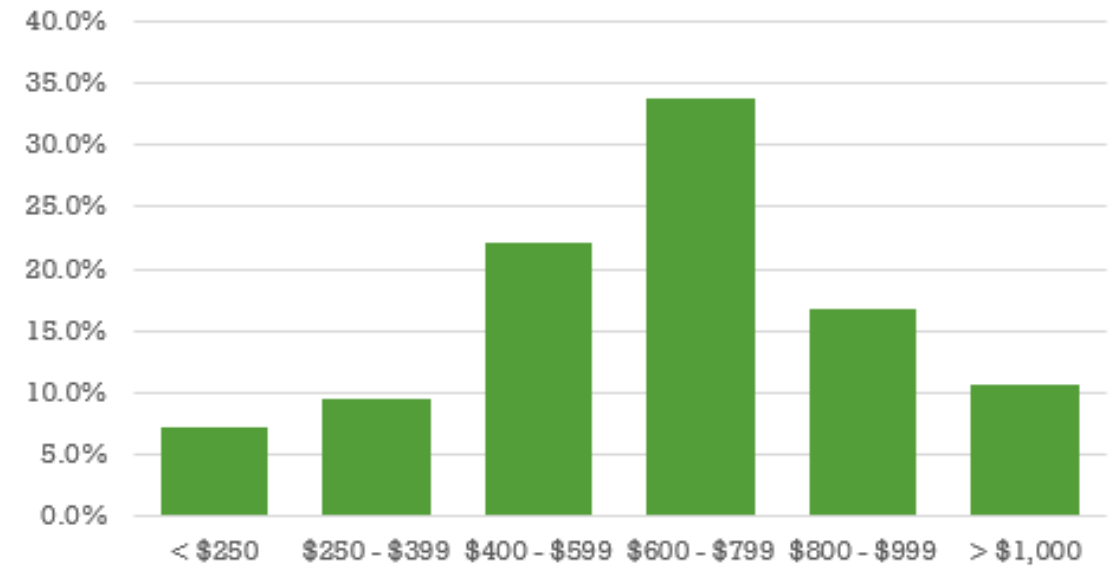
## Housing Trend (Units Built / Decade)

Belmont + Landon's Census Data





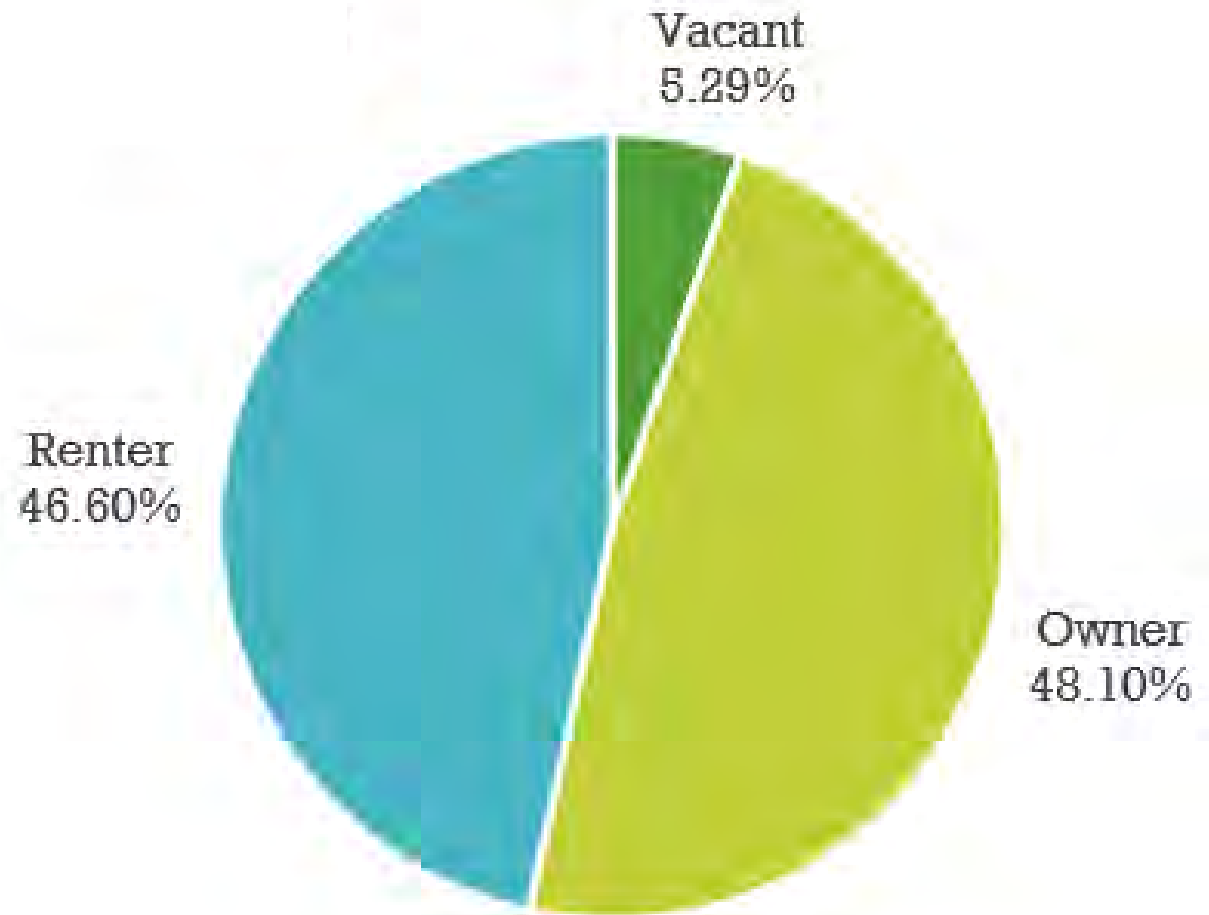
Owners



Renters

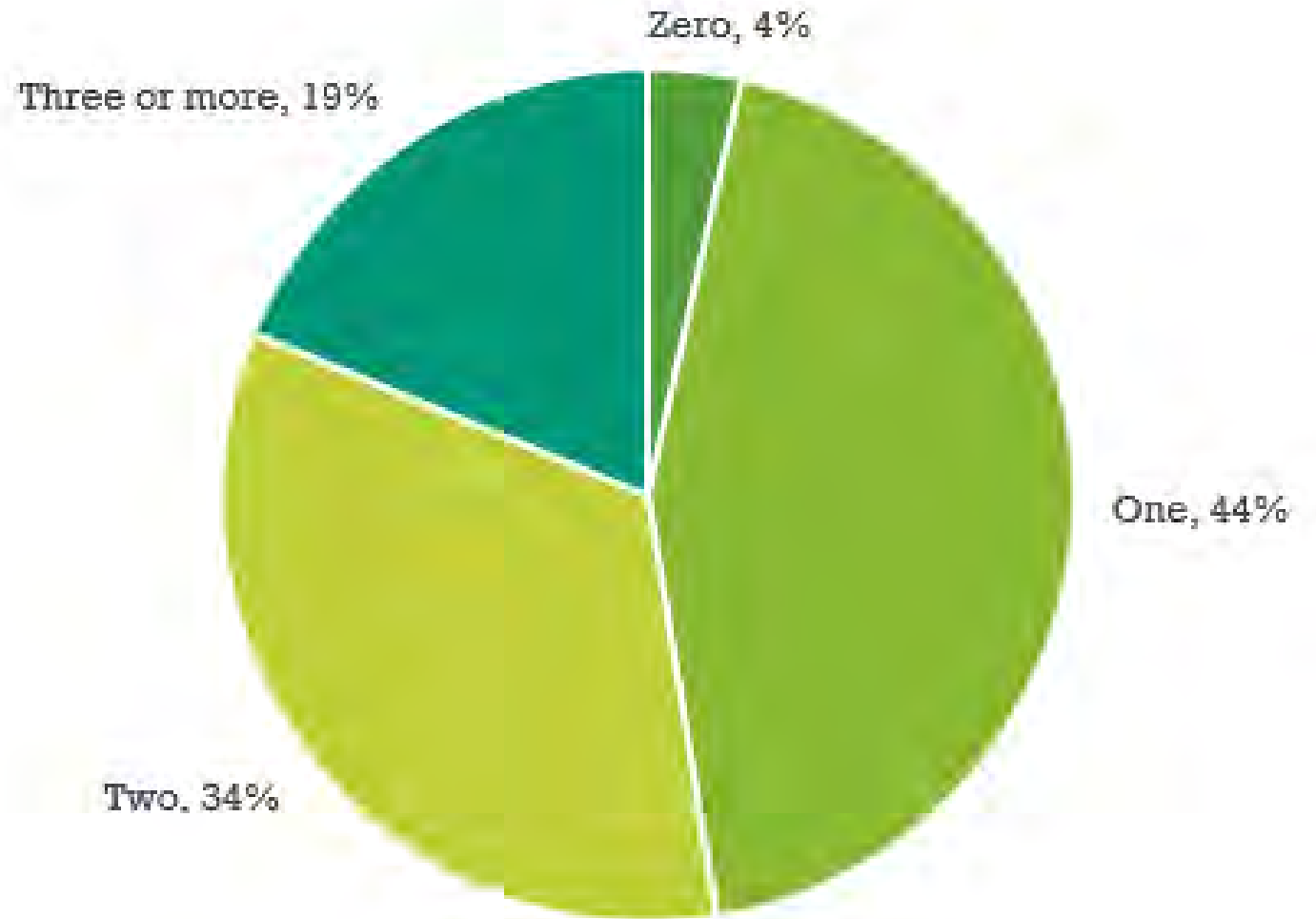
# Monthly Housing Costs

Belmont + Landon's Census Data



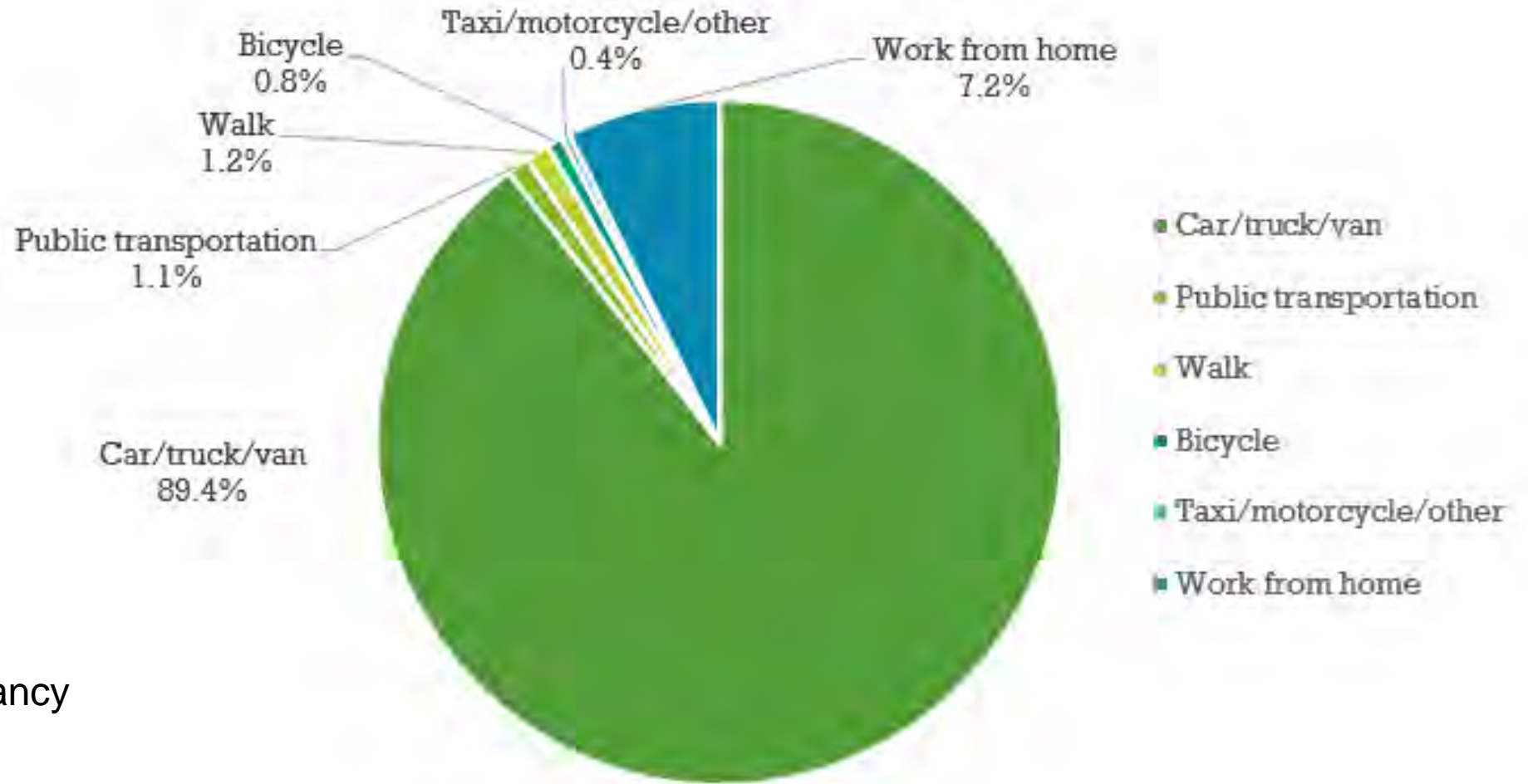
# Housing Occupancy

Belmont + Landon's Census Data



## Vehicles Available Per Household

Belmont + Landon's Census Data



#### Car/Truck/Van:

- 79% single-occupancy
- 11% carpooled

## Means of Transportation to Work

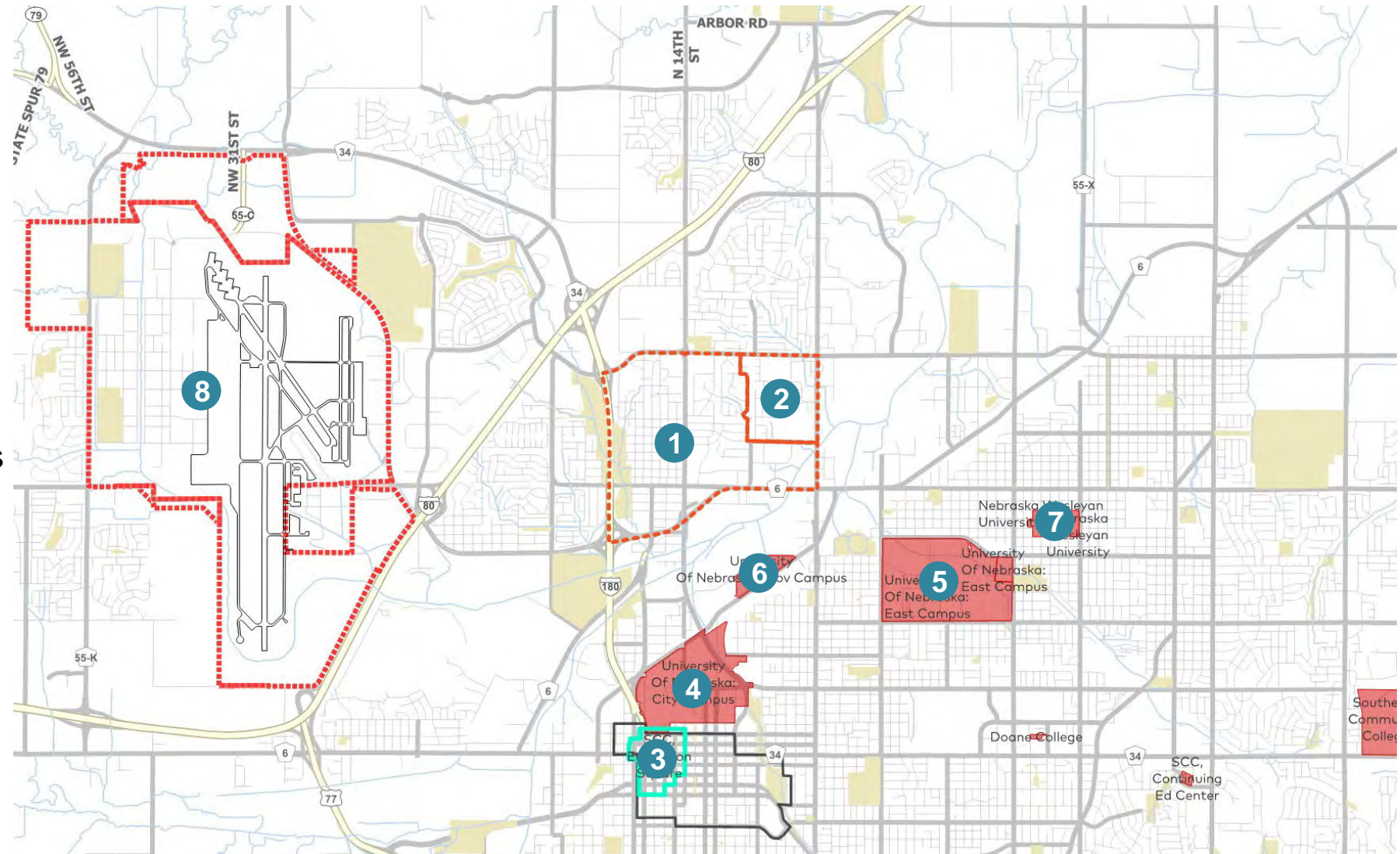
Belmont + Landon's Census Data

# Mapping



# Context Map

- 1 Belmont
- 2 Landon's
- 3 Downtown Lincoln
- 4 UNL – City Campus
- 5 UNL – East Campus
- 6 UNL – Innovation Campus
- 7 Wesleyan University
- 8 Lincoln Airport





## LEGEND





# Land Use

## LEGEND

Belmont



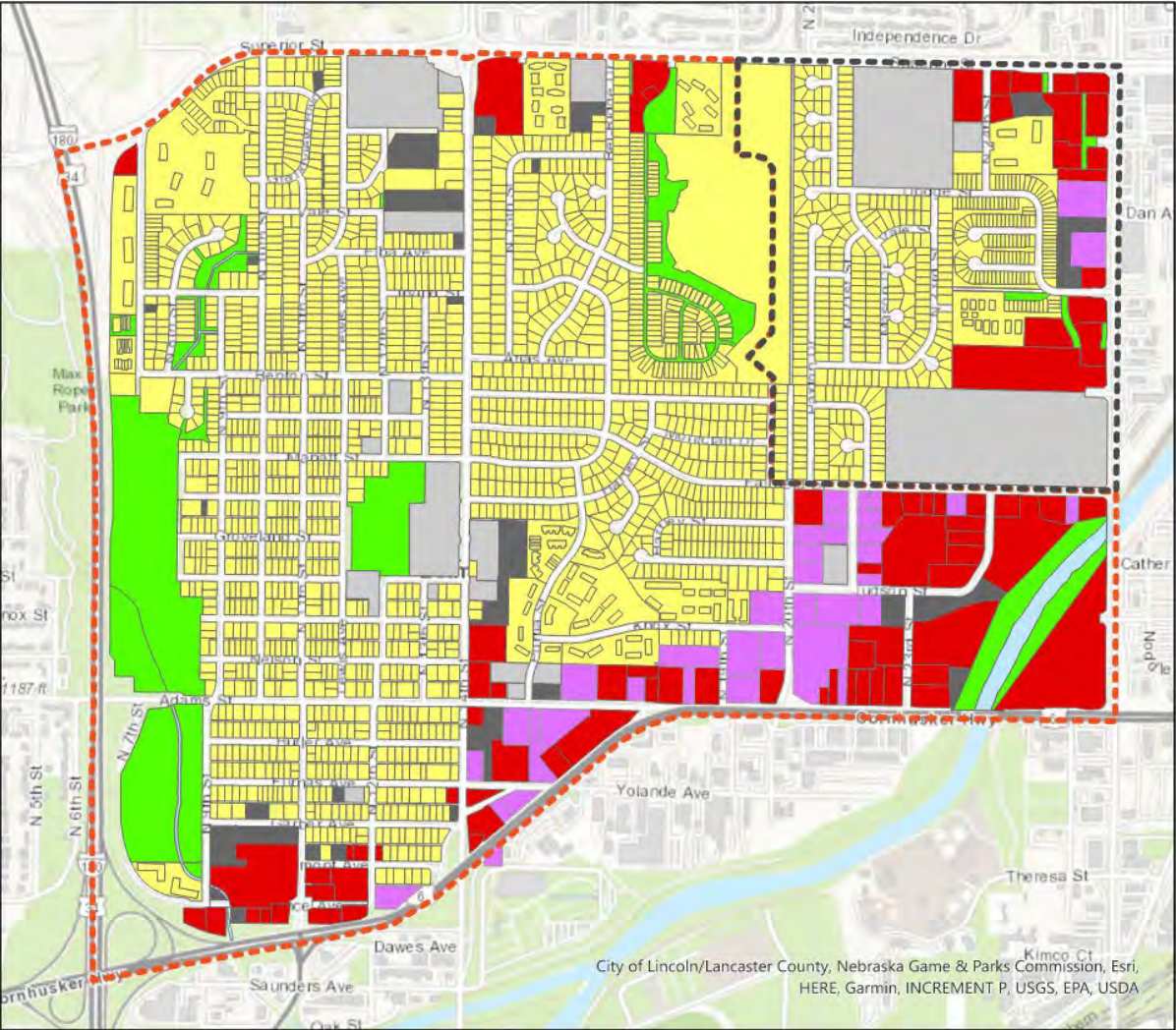
Landon



Existing Land Use (Planning) selection

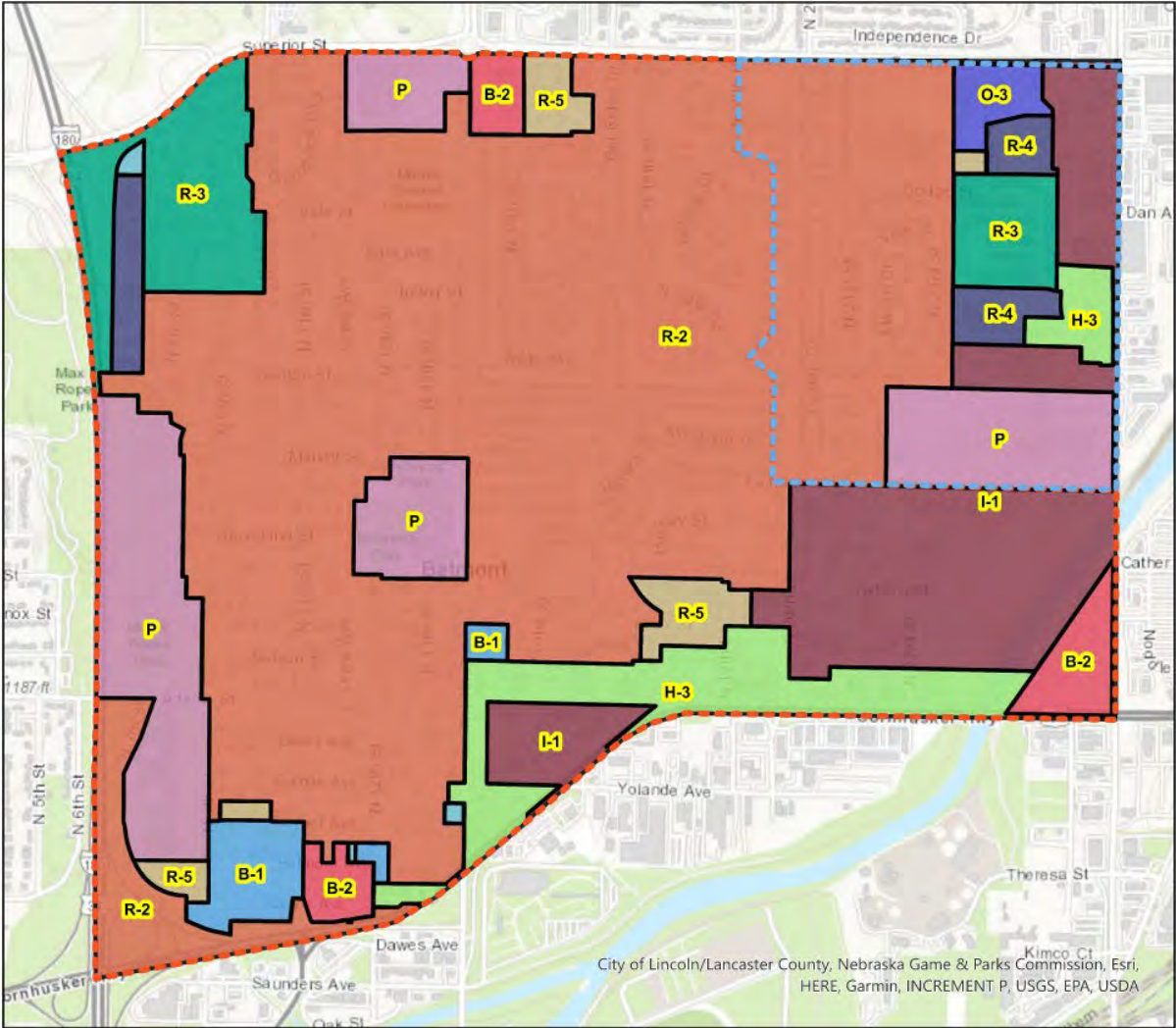
- Residential
- Commercial
- Industrial

- Public / Semi-Public
- Parks / Open Space
- Lakes / Streams
- Environmental / Natural Areas
- Right-Of-Way
- Agricultural
- Mining / Extraction
- Pasture / Grassland
- Vacant / Undeveloped Land



# Zoning

## LEGEND

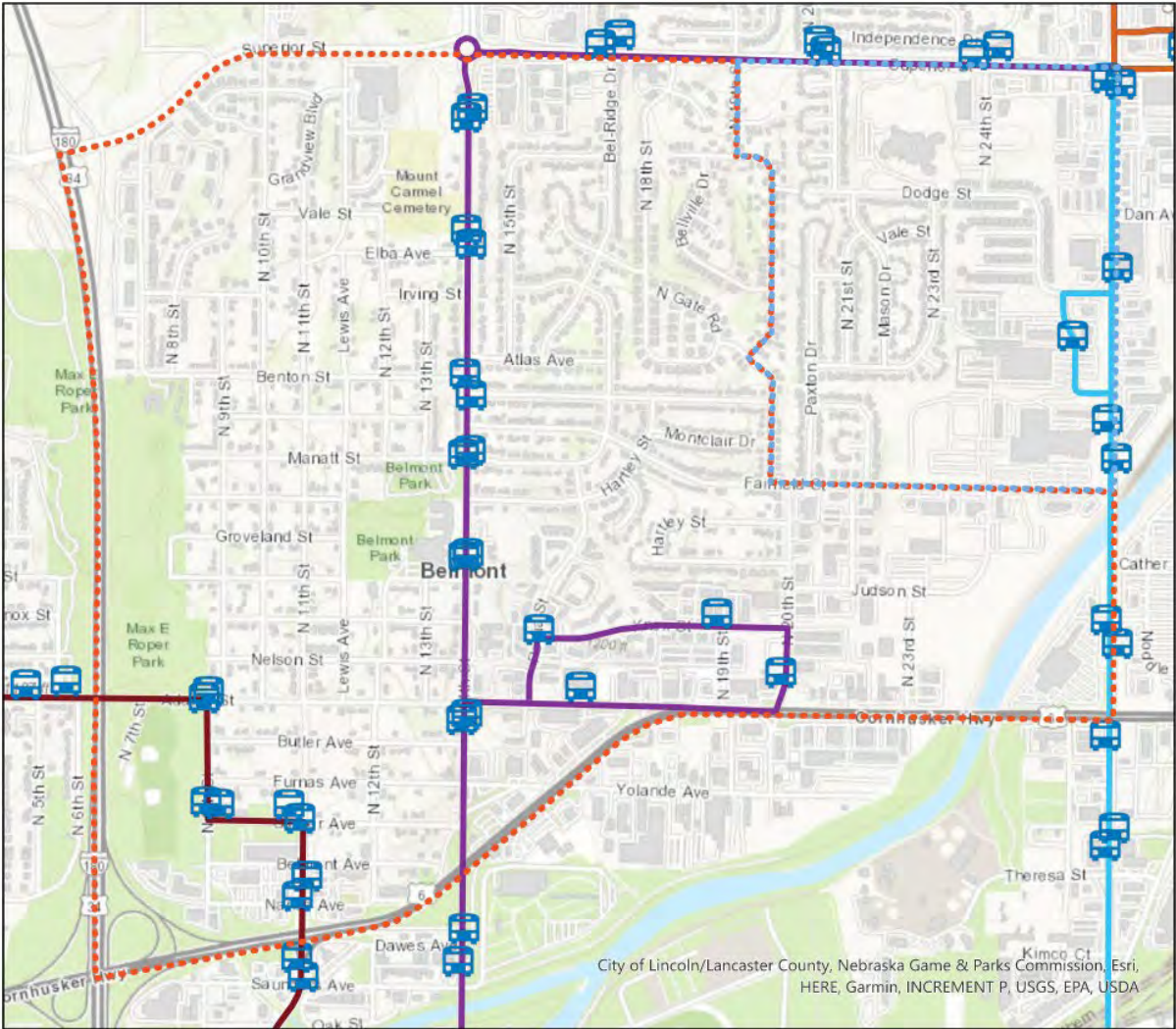




# Public Transit

## LEGEND

-  Landon
-  Belmont
-  StarTran Bus Stops
- Daily Routes**
-  27 North 27th
-  41 Havelock
-  48 North 48th
-  52 Gaslight





# Bike + Trails Network

## LEGEND



### Commuter Trail Units

- Dietrich; Murdock
- Salt Creek Levee
- Other





## Proposed/Future Trails

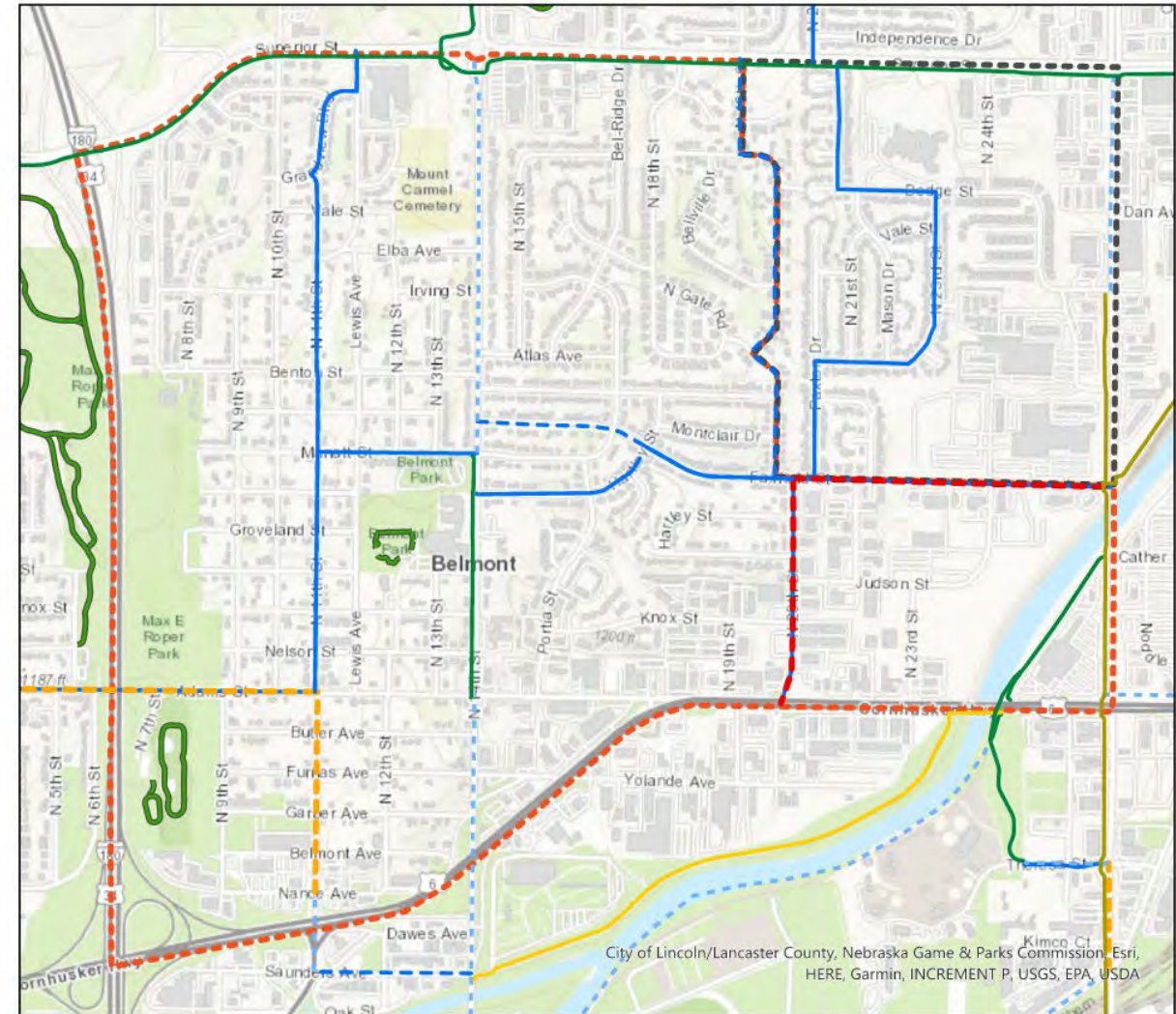
- Future

### Proposed On Street Bike Network

-  Bike Lane
-  Buffered Bike Lane
-  Shared Lane

## Existing On Street Bike Network

-  Shared Lane  
 Existing Pedestrian/Bicycle Facilities  
 Landon  
 Belmont



# Complete Street Projects

An approach to urban planning and design that ensure safe and convenient access for all users, including:

- pedestrians
- cyclists
- motorists
- transit riders

of all ages and abilities.

## LEGEND

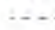
 Belmont

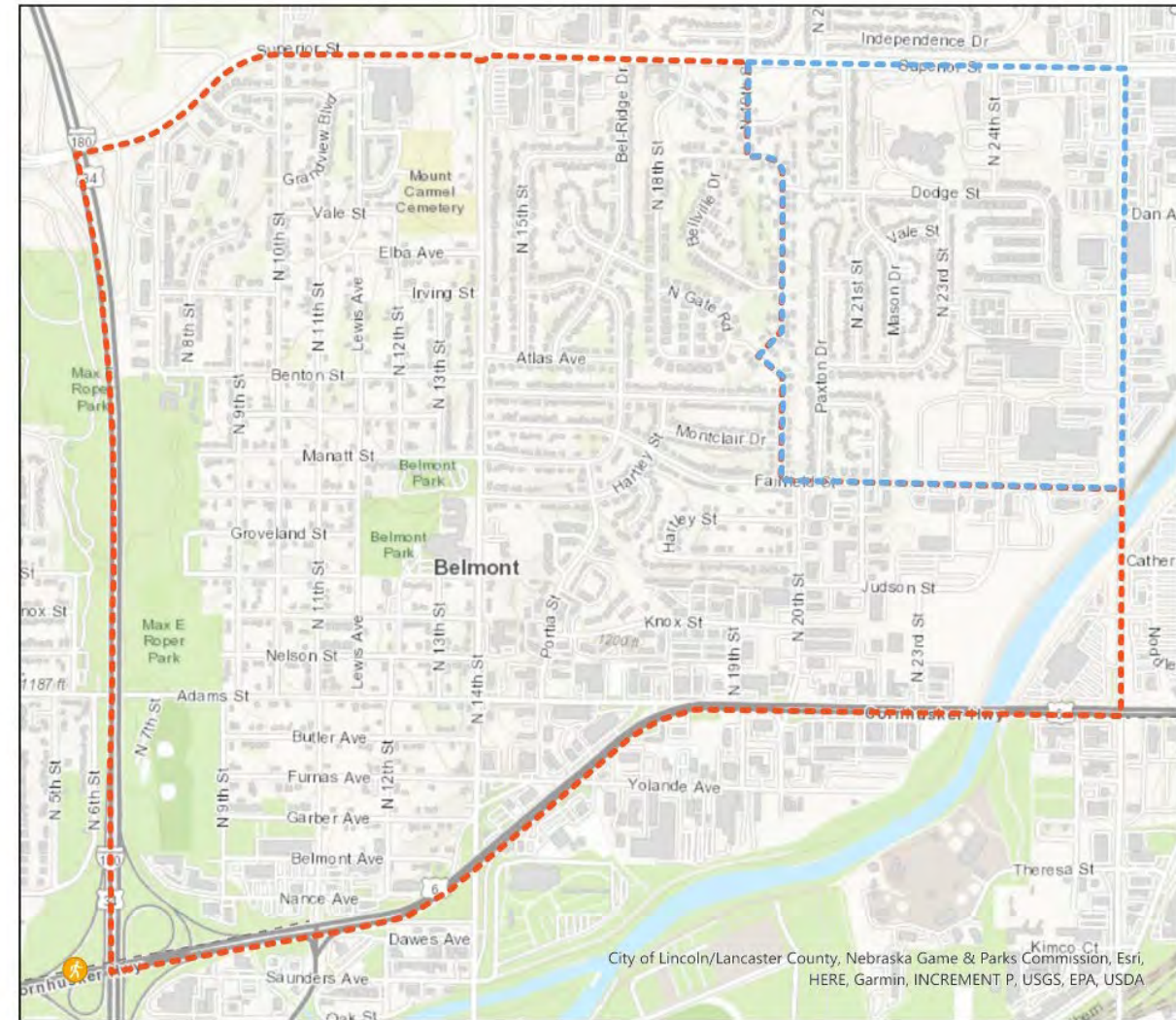
 Landon

Proposed Project

 Sidewalk

Status

 Unfunded





# Sidewalks

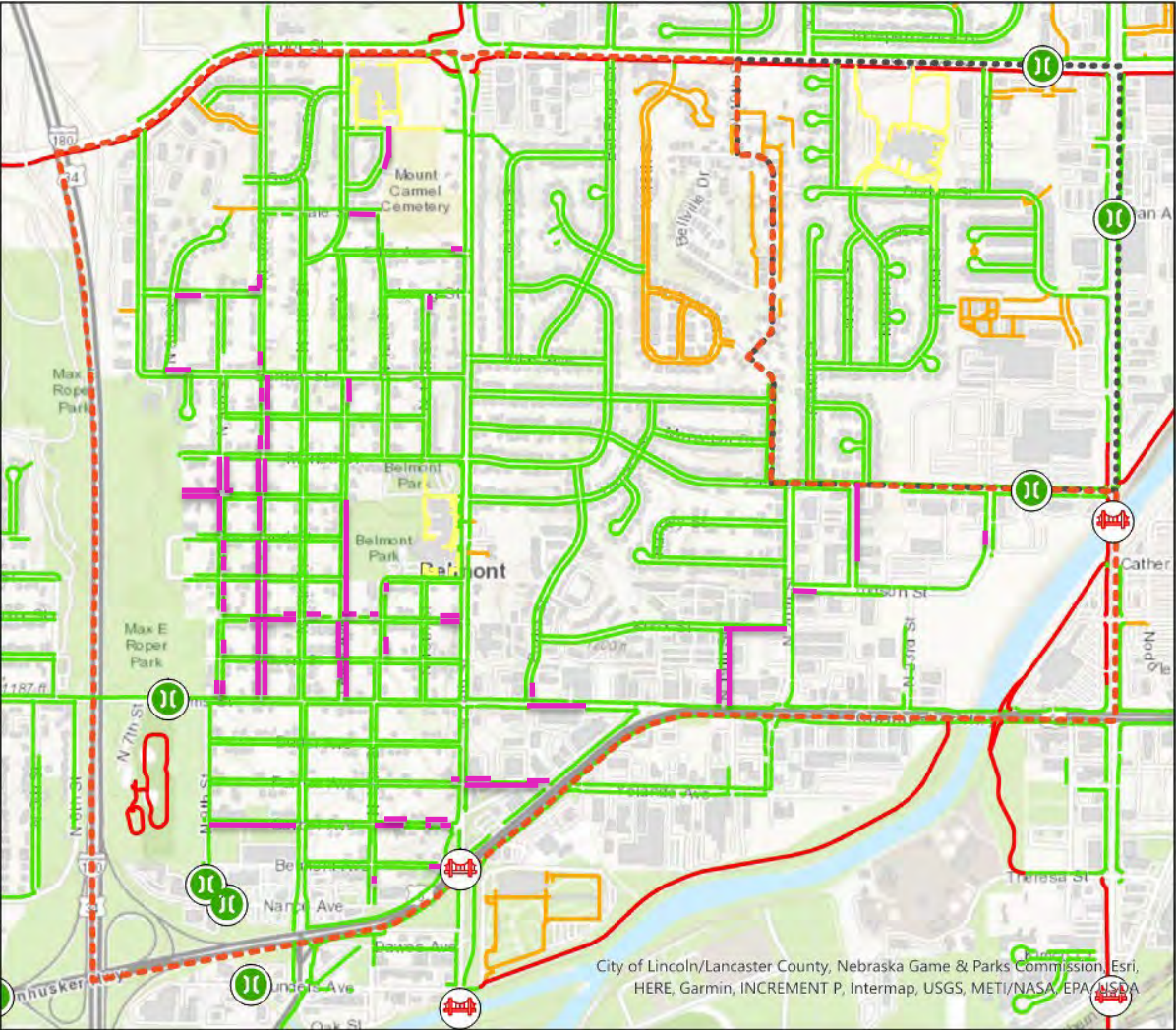
## LEGEND

- Belmont
- Landon
- LTU
- Parks
- Private
- School
- Gap in sidewalk

## Bridge Structures

StructureType

- Bridge
- Railroad Overpass
- Culvert

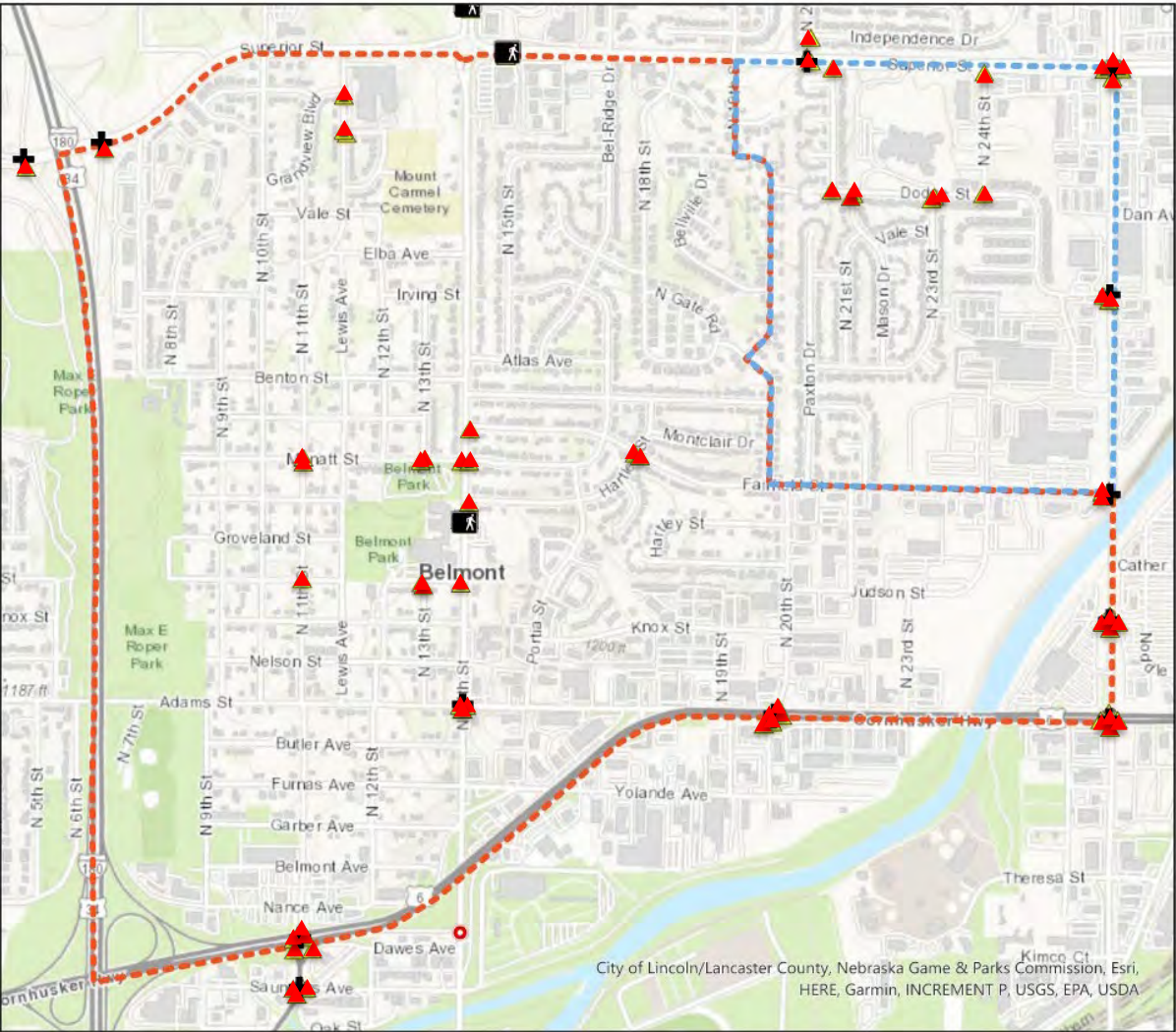


# Crosswalks + Signaling

## LEGEND

### Intersections

- Signalized Intersection
- Pedestrian Intersection
- Roundabout
- Crosswalks
- Crosswalks
- Landon's
- Belmont



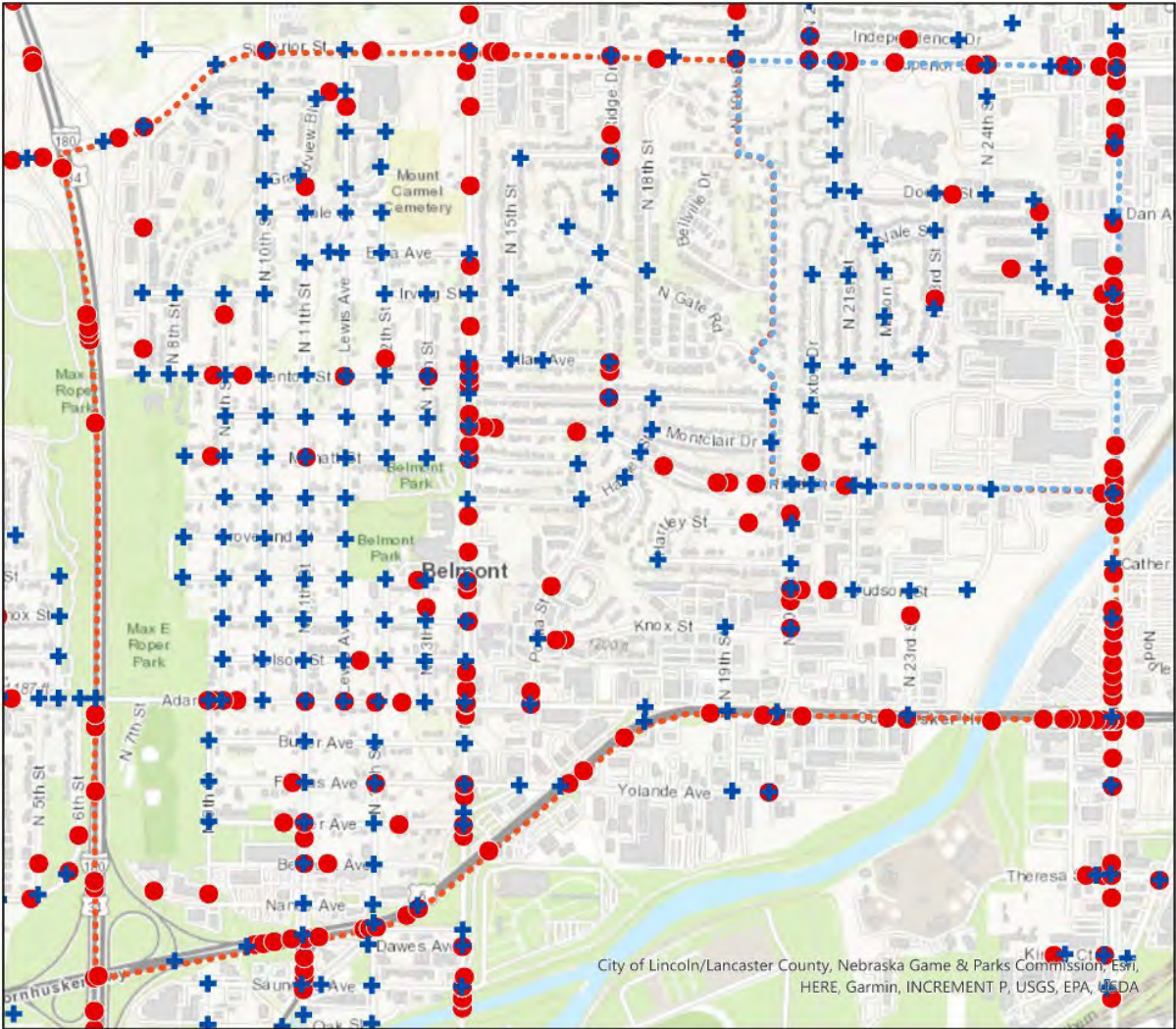


# Traffic Accidents

2019

## LEGEND

- Belmont
- Landon
- Crash App Accidents
- CrashAppIntersections

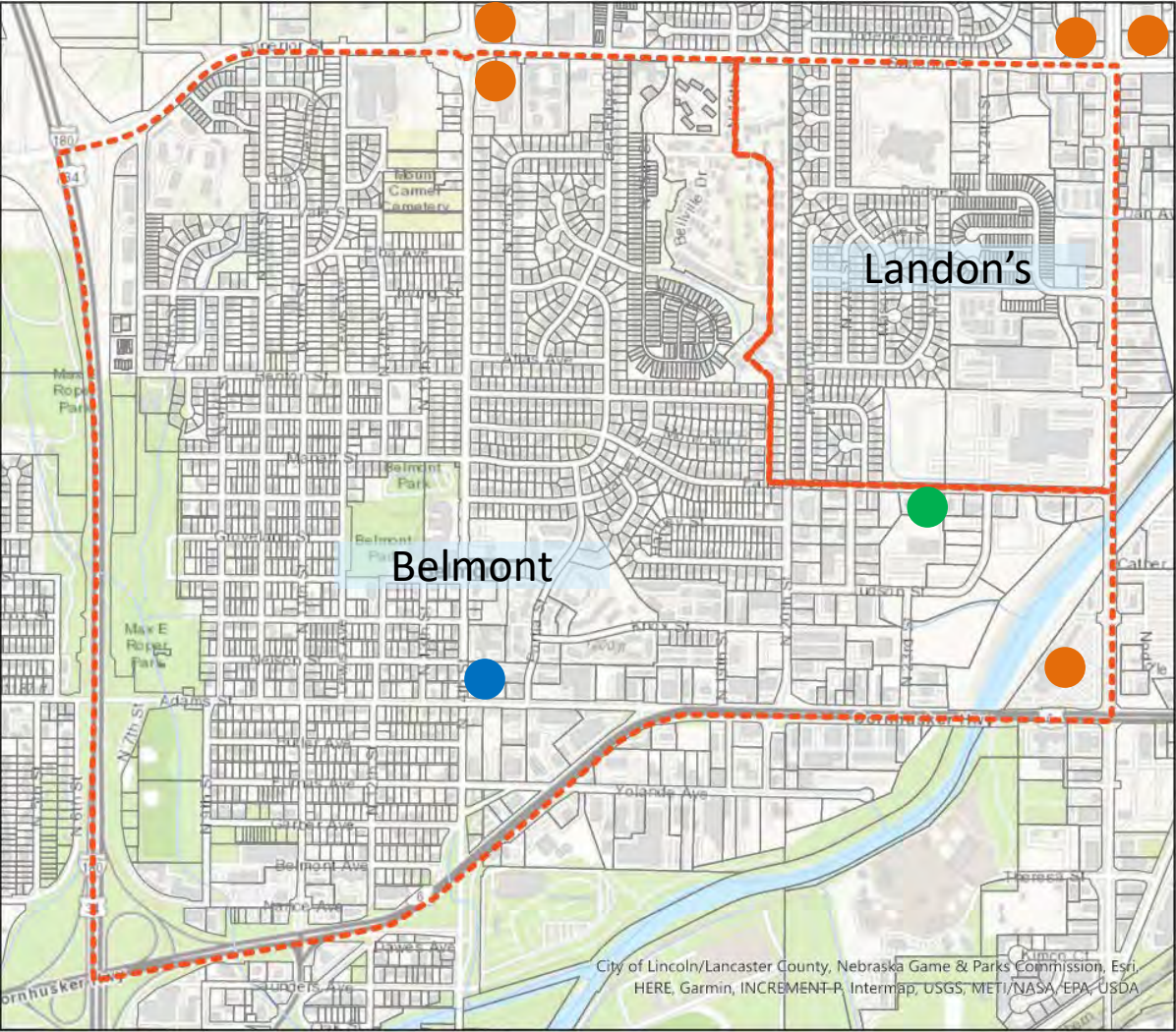




# Medical Facilities

## LEGEND

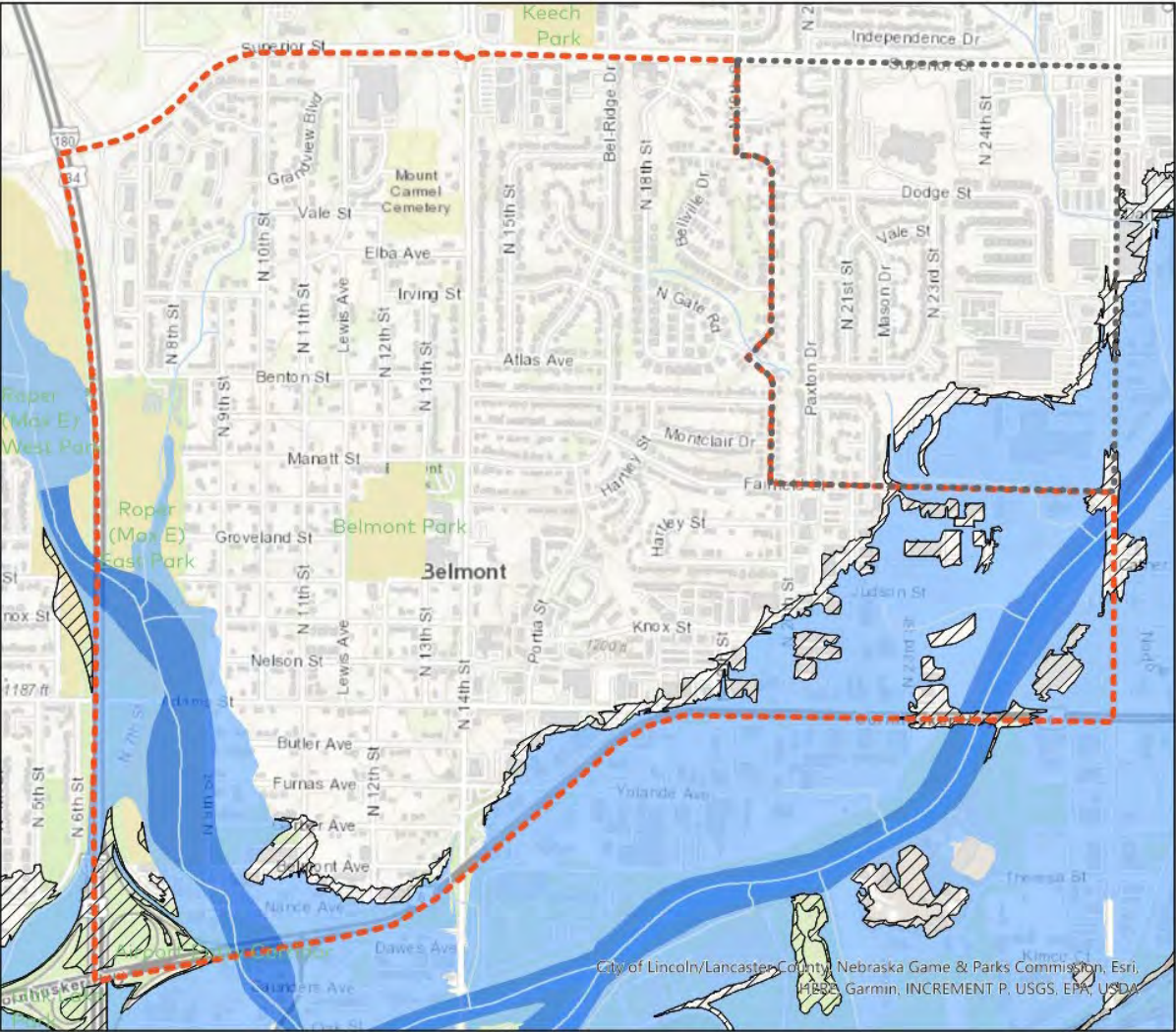
- Nebraska Urban Indian Medical Center
- Kreshel Clinic (Bluestem Health)
- Pediatrics at Kreshel Clinic
- Pharmacies



# FEMA Floodplain

## LEGEND

-  Belmont
-  Landon
-  Streams
-  FEMA Floodplain-500 year
-  Floodplain
-  Floodway
-  Parks

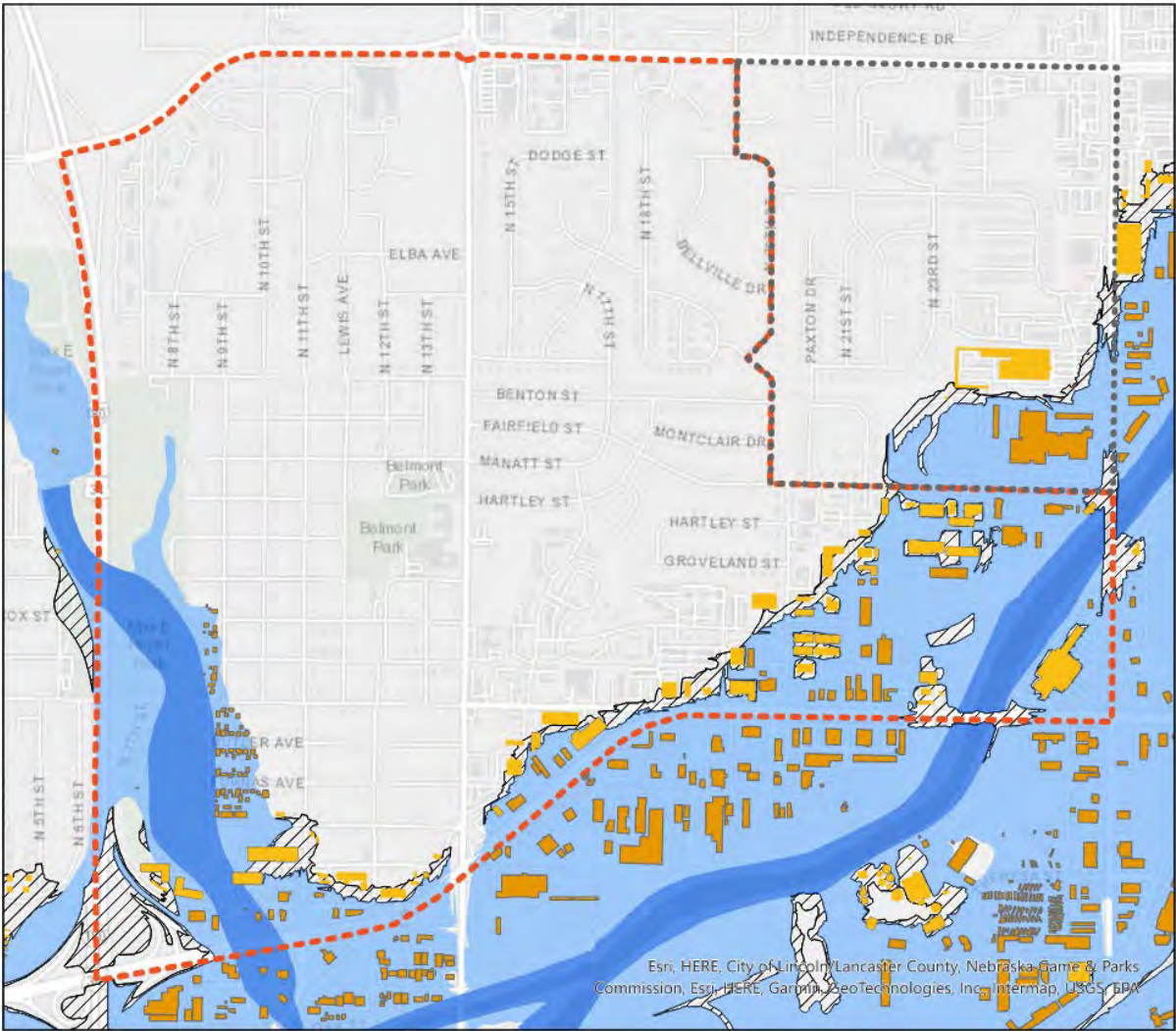




# Buildings in Floodplain

## LEGEND

- Buildings in 500-year Floodplain
- Buildings in 100-year Floodplain
- Landon's
- Belmont
- FEMA Floodplain
  - FEMA Floodplain-100 year
  - Floodway
  - FEMA Floodplain-500 year



# Impervious Surfaces

## Belmont



# Existing Plans





## **Lincoln's Vision for a Climate-Smart Future 2021**

City of Lincoln

- Transition to Low-Carbon Energy
- Build a Decarbonized + Efficient Transportation Infrastructure
- Align Economic Development Goals with Climate Realities to Ensure a Thriving Economy
- Improve Protections for + with Lincoln Residents
- Building a Resilient Local Food System
- Maximize Natural Climate Solutions
- Reduce Waste
- Engage Residents in Co-Creating a Climate-Smart Future



## **Existing Plans**

City of Lincoln

BELMONT NEIGHBORHOOD REDEVELOPMENT PLAN

# LOCAL FOOD SYSTEM PLAN 2023 – 2027



## Local Food System Plan 2023-2027

City of Lincoln

- Increase and ensure access to healthy food for all
- Invest in thriving local food and farm community to increase local food production and food security
- Promote food production practices that protect soil, water, and air
- Reduce food waste

## Existing Plans

City of Lincoln / Lancaster County

BELMONT NEIGHBORHOOD REDEVELOPMENT PLAN

## Solid Waste Management Plan 2040

for Lincoln and Lancaster County

Evaluate | Update | Elevate  
2020 Update

### Final Planning Document

2020 5-Year Update



## Solid Waste Management Plan 2020 5-Year Update

Lincoln and Lancaster County

- Source reduction
- Toxics reduction
- Yard waste
- Organic waste diversion
- Residential recycling diversion
  - Curbside recycling
  - Recyclables collection sites
- Commercial recycling and diversion
- C&D materials landfill diversion
- Transfer station + processing facilities

## PLAN forward

Lincoln-Lancaster County  
2050 Comprehensive Plan

The Lincoln-Lancaster County 2050 Comprehensive Plan is a roadmap to "plan forward", not only in time, but in concept, to envision a community that is **Livable, Equitable, Thriving, Resilient, and Innovative.**

## PLAN forward: Lincoln-Lancaster County 2050 Comprehensive Plan

Lincoln and Lancaster County

- Roadmap to plan forward in time + concept
- To envision a community that is
  - Livable
  - Equitable
  - Thriving
  - Resilient
  - Innovative
- Includes information on:
  - Growth Framework
  - Community Background
  - Public Engagement Process







# Belmont Park Natural Play Space Master Plan

Lincoln Parks & Recreation

The original plan focused on enhancing the park with natural spaces and features, aiming to provide nature-based opportunities. Recent improvements include a picnic shelter (2018) and plans for a north walking loop, though funding has not yet been allocated.

# Existing Plans

Belmont / City of Lincoln

WINNING ASPIRATIONS				
Continue in this era of engagement by fostering a vibrant, interconnected community that prides itself on active participation and robust support systems for all residents.				
2024		2025	2026	
Creating & Keeping Connections		Increasing Engagement	Establishing a Full-Service Hub	
Build a strong foundation of active participation by expanding the Belmont network to foster deeper connections among Belmont stakeholders by launching initiatives that bolster community involvement and pride.		Expand involvement and solidify trust within the community by focusing on a shared sense of belonging, accelerating the development of community programs, and building traditions and commitments that resonate with stakeholders.	Transform Belmont into a full-service hub with improved infrastructure, catering to all ages and abilities, ensuring access to essential services: health and wellness, food, healthcare, childcare, and extended education with accessible hours.	
2024 PRIORITIES				
Community Identity and Unity	Community Engagement and Events	Stakeholder Engagement and Network Expansion	Belmont Park Activation	Operational Belmont Pool
Establish and promote a distinct community identity through a shared mission and marketing.	Increase community cohesion by enhancing participation in diverse, year-round events and activities.	Build relationships with stakeholders across a variety of sectors and clearly communicate community needs.	Maximize the potential of Belmont Parks & Trails for community activities and events.	Ensure the Belmont Pool is fully operational, focusing on resolving staffing challenges.
<ul style="list-style-type: none"><li>● Craft a mission statement and core values for unified messaging.</li><li>● Implement a strategic marketing plan targeting diverse groups.</li><li>● Enhance communication about community needs and events.</li><li>● Promote local identity through signage and public art.</li></ul>	<ul style="list-style-type: none"><li>● Boost event participation and organize a 'Summer of Fun'.</li><li>● Actively involve families and partners in engagement efforts.</li><li>● Expand youth sports and coordinate with local schools for events.</li><li>● Host a community garage sale.</li></ul>	<ul style="list-style-type: none"><li>● Engage with local businesses for mutual community support.</li><li>● Present clear funding requests to potential sponsors.</li><li>● Organize a 'Shark Tank' style event for fundraising.</li><li>● Commit to identifying and involving over 30 participants in SNAC meetings.</li></ul>	<ul style="list-style-type: none"><li>● Maintain the ballfield and maximize its use.</li><li>● Offer monthly movie nights as part of the 'Summer of Fun'.</li><li>● Develop a comprehensive plan for the Belmont Park that includes utilization and beautification.</li><li>● Increase resident and stakeholder input and voice in neighborhood improvements</li></ul>	<ul style="list-style-type: none"><li>● Ensure the pool is fully staffed.</li><li>● Tackle the challenges of recruiting lifeguards.</li><li>● Increase awareness and access to the pool for swimmers of all ages and abilities</li></ul>

# Belmont SNAC Strategic Plan 2024-2026

Lincoln Community Learning Centers

- Fostering a vibrant, interconnected community that prides itself on active participation and robust support systems for all residents
  - Creating + keeping connections (2024)
  - Increasing engagement (2025)
  - Establishing a full-service hub (2026)

# Lincoln Bike Plan

On-Street Bicycle Facilities Plan



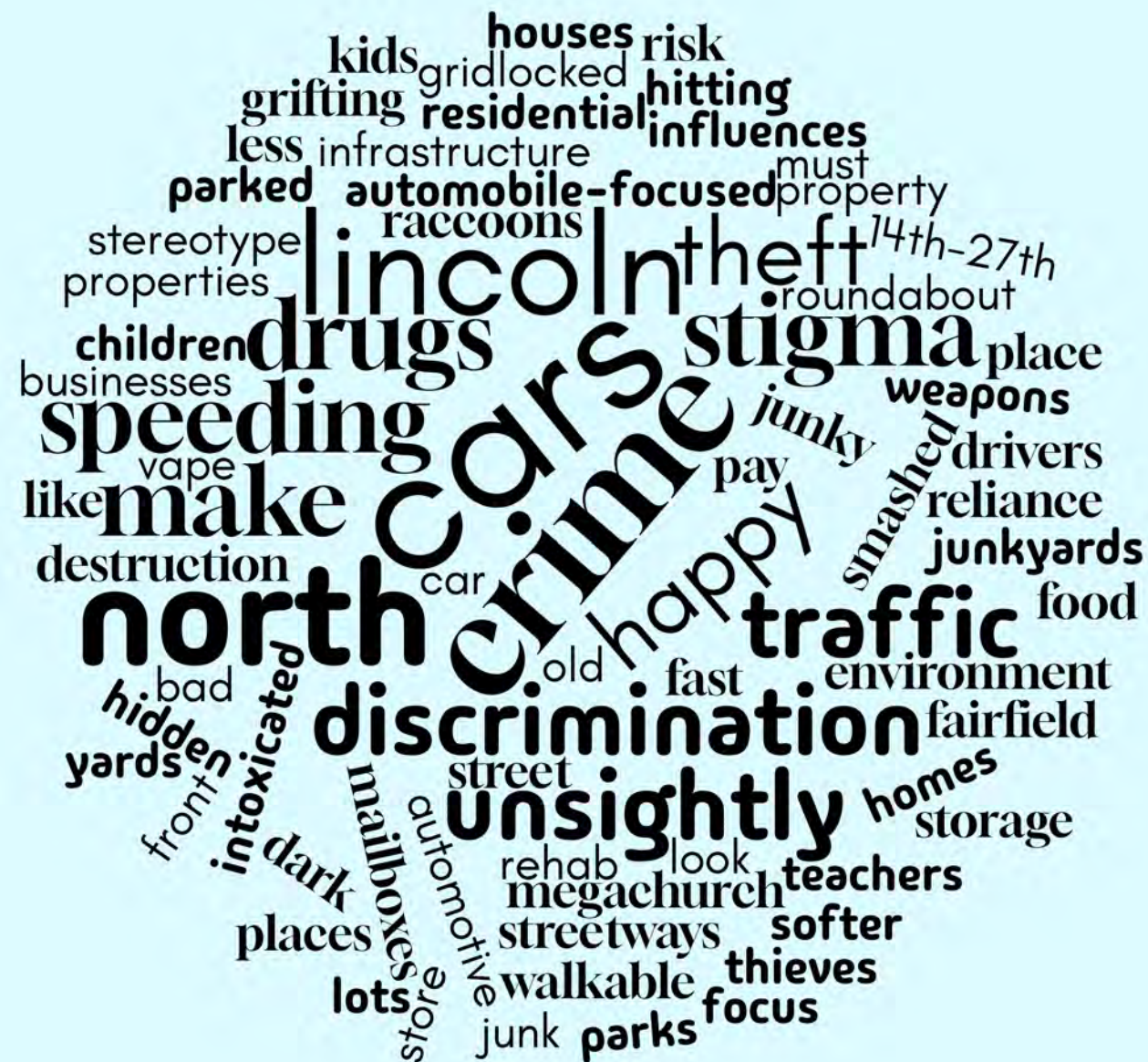
# Lincoln Bike Plan 2019

Lincoln Metropolitan Planning Organization

- Steps to Gold
  - Quick wins; Demonstration projects; Before + after studies; Safety campaign; Bicycle experts; Complete streets manual; Ordinance modification; Bike plan report; Track/report spending; Revamp reporting of bikeways
- High Priority Bike Projects
  - W Dawes Ave: Cornhusker Hwy to N 1<sup>st</sup> St; Shared lane (West Lincoln)
  - Fairfield St: N 20<sup>th</sup> to N 27<sup>th</sup> St; N 14<sup>th</sup> to N 20<sup>th</sup> (Belmont)
  - 27th St: Fairfield Intersection (Belmont)



# Community Feedback



# BELMONT NEIGHBORHOOD REDEVELOPMENT PLAN











- Where people live
- Treasure / keep
- Concern / change
- Hazard / remove

# Community Mapping



## Treasure / Keep

1. Parks (Frisbee and Dog) were seen as positive amenities.
2. Dog Park needs better lighting and amenities for dogs.
3. The Park and Pool by the school are seen as positive amenities but need updates.
4. Parks/Pool need more bike racks.
5. BCC is considered a treasure for the community.
6. A police presence at BCC or School along with a police substation is desired.
7. Can there be more connection to the new Youth Sports park/fields SW of 180/Cornhusker Hwy?

## Concern / Change

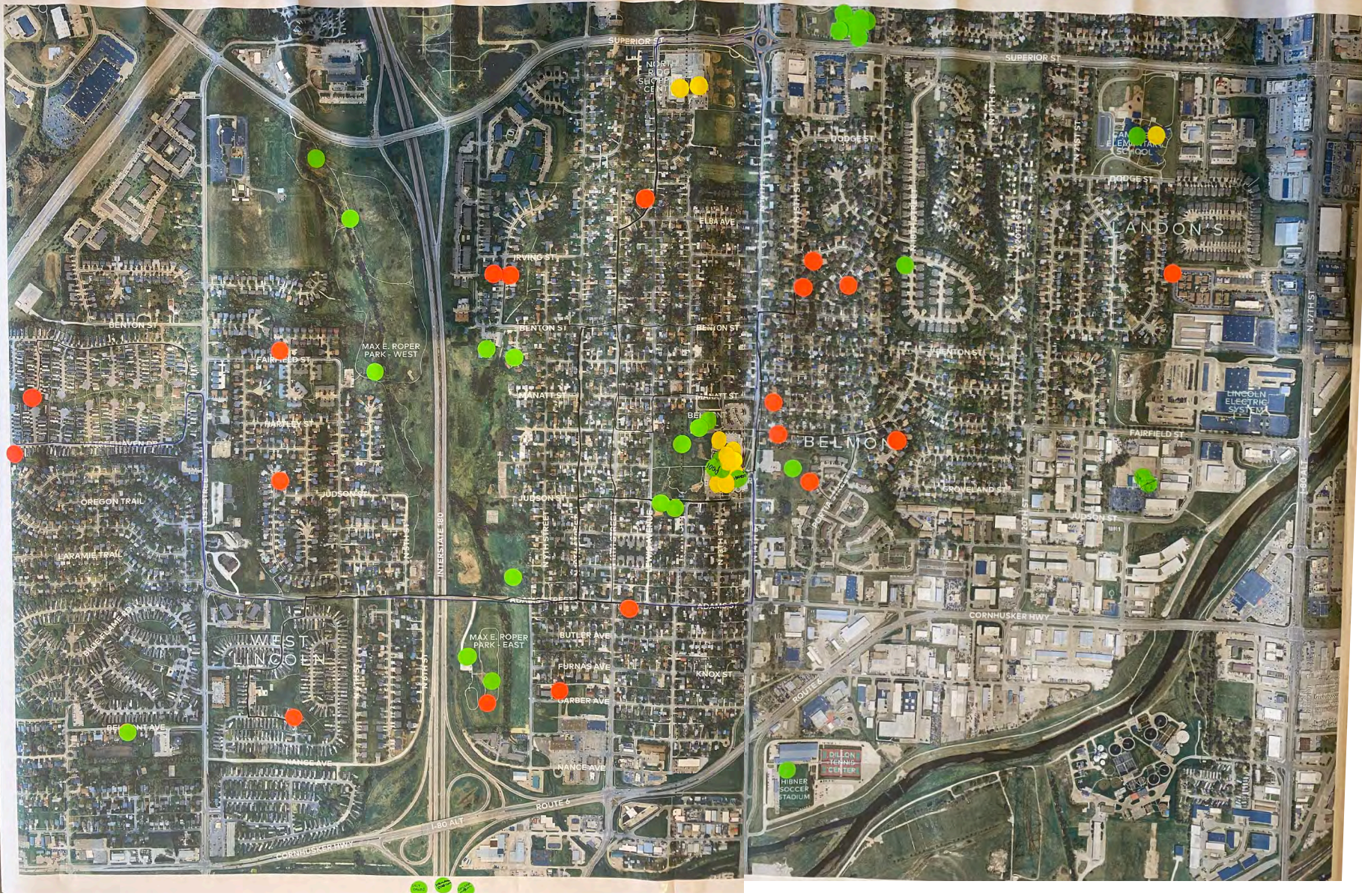
1. People are hopeful that the retail center at 11th & Cornhusker can be revitalized. Many comments on this area.
2. See also red dots.

# Community Mapping Notes

## Hazard / Remove

1. The Bridge at 14<sup>th</sup> & Cornhusker Hwy received many dots/comments:
  - Bridge is in disrepair.
  - Not seen as safe.
  - Not pedestrian or bike friendly.
  - The sidewalk connection on 14<sup>th</sup> north of the bridge needs to be repaired and made safer.
2. There needs to be a better pedestrian and vehicular connections from the west side of 180 to Belmont area.
3. Many of the red dots were placed due to traffic issues, speeding, school traffic congestion or streets that need repair.
4. Many aesthetic concerns were noted related to the parking/businesses on Cornhusker Hwy.
5. 180 and Cornhusker Hwy interchange should be viewed as a “Gateway” into Lincoln....it is not currently inviting or very impressive.
6. Cornhusker Hwy is viewed as a “sea of concrete” and not pedestrian friendly.



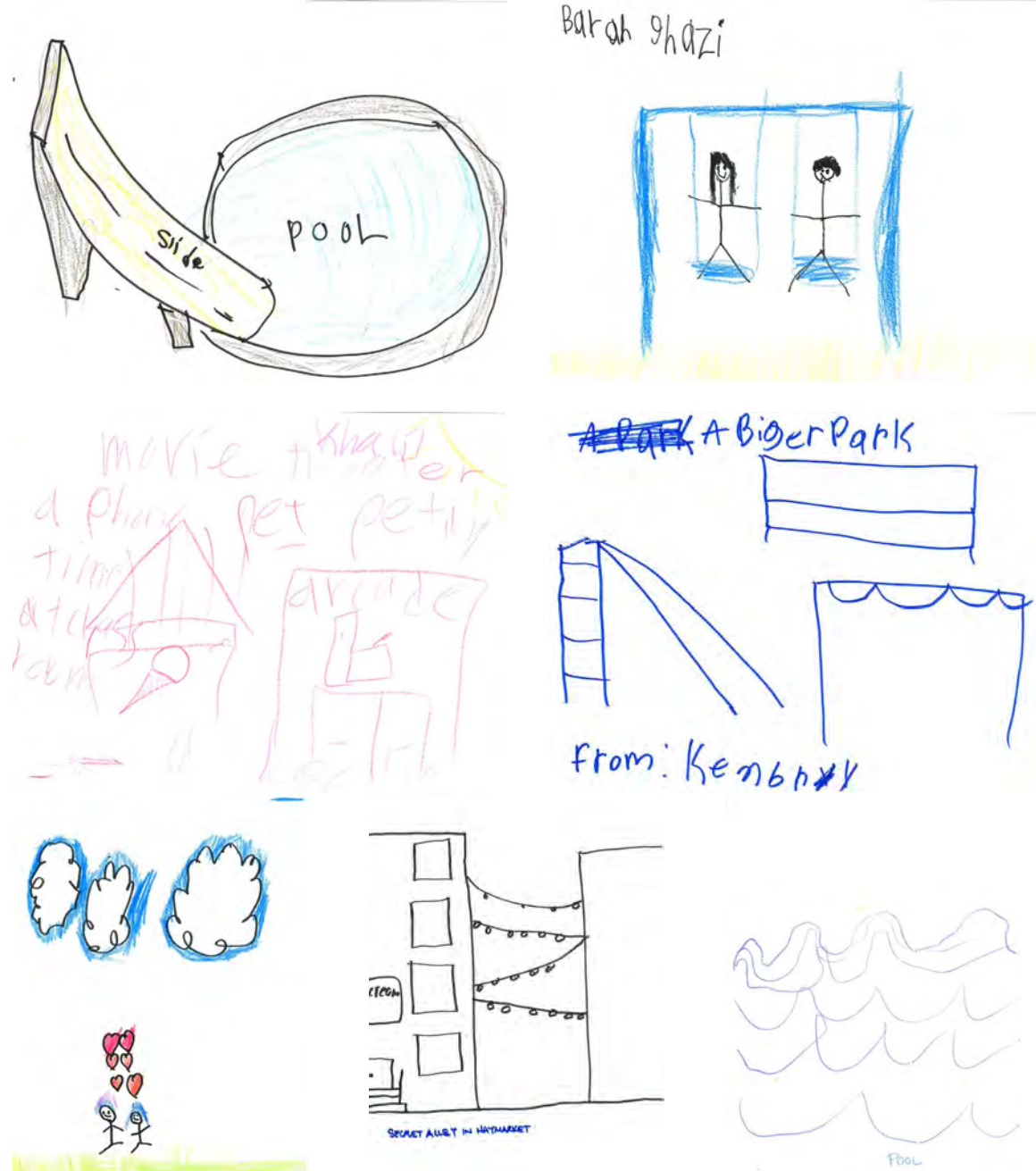


Kids Mapping



1. **Crossing 14<sup>th</sup> Street for school** is dangerous (even with school zone, lights to cross, crossing guards; people still speed and run the light putting children and adults in danger.
2. Lack of **healthcare** close by.
3. Local **restaurants** were a burden.
4. Lack of **accessibility for the pool**; noted many times. People go elsewhere for a zero-entry pool.
5. Kids want more convenient public places to play: **basketball, baseball, skate** (roller, ice, skateboard); reference to Omaha's Gene Leahy Mall.
6. Most **favorite places** for kids and adults:
  - a. Public library
  - b. Belmont Elementary
  - c. Rec Center

## Kids Mapping Notes



- Parks (8)
- Playing/activities outside (8)
- Connections with neighbors (6)
- Walkable (4)
- Home upkeep; clean up (4)
- Bridges over highways (3)
- Safety (3)
- Bikeable (2)
- More businesses (2)
- Grocery / food access (2)
- Medical / mental health support (2)
- Pool (2)
- Sidewalks / crosswalks (2)
- Skate park/rink/ribbon (2)
- Accessibility
- Better roads / side streets
- Cleaner
- Community garden(s)
- Connections beyond Belmont
- Green
- Indoor water park
- Kindness
- Less media bias / stigma
- Less noise pollution from cars
- No correction house
- School drop-off
- Senior center / programs
- Shops
- Youth programs

# Imagine





# Themes

**Community Building**

**Health + Recreation**

**Mobility + Transportation**

**Environment**

**Housing + Development**

## **Themes**

# Goals

Consider your top 10 priorities  
for neighborhood goals

# Prioritizing Goals

## Belmont Neighborhood Redevelopment Plan Community Open House #2

Thank you for your time to share your priorities with us! Please use this sheet to help organize your thoughts. Mark what you think are the 10 most important goals and then head to the stations with your marbles!

### Community Building

- 1 Improve communication in the neighborhood**  
Create and advertise a single hub to gather information and events; distribute via multiple outlets
- 2 Create a central community outdoor space**  
Satisfy a desire to have a central place for community activities like a farmer's market, performances, public art, recreation
- 3 Increase police presence in the community**  
Encourage a greater sense of safety in the community with positive community police presence
- 4 Support/enhance existing community institutions**  
Advertise existing programs within the community and build upon those to meet current needs

### Health + Recreation

- 5 Improve access to healthy food**  
Support integration of healthy food offerings within the community
- 6 Increase access to local health care**  
Ensure widespread access to medical, mental health, pharmacies, and home health
- 7 Increase opportunities for inclusive outdoor activity**  
Improve existing pool and playground equipment and increase amenities that support inclusive outdoor gathering
- 8 Provide outdoor lighting in public areas**  
Improve safety of public areas such as parks and bus stops with appropriate outdoor lighting

### Environment

- 9 Encourage connection to nature**  
Increase and improve park facilities in the neighborhood to encourage greater engagement with the natural environment
- 10 Reduce environmental risks (heat, cold, flood)**  
Support energy-efficiency in all buildings, stormwater management, and reduction in urban heat island; establish a resiliency center
- 11 Maximize recycling + composting**  
Encourage recycling and composting through education and community facilities/programs

### Mobility + Transportation

- 12 Create safer paths to schools / parks / library**  
Redesign specific areas to provide safer access for pedestrians and cyclists to community hubs
- 13 Improve pedestrian + cyclist experience within the neighborhood**  
Catalyze and complete sidewalk, bikeway, and street design + construction that offer safer pathways for all means of travel
- 14 Improve pedestrian + cyclist experiences to destinations outside the neighborhood**  
Provide safe pathways from Belmont to West Lincoln, Downtown, and the University
- 15 Slow car traffic on neighborhood streets**  
Redesign school drop-off zone on 14th and incorporate other traffic calming measures to slow traffic
- 16 Improve bus transit experience**  
Design transit riders experience with routes, frequency, and bus stop accommodations

### Housing + Development

- 17 Maintain access to affordable housing**  
Support programs that ensure affordable + diverse housing options for all in the neighborhood
- 18 Reinforce pride of neighborhood**  
Support minor home repair, neighborhood cleanup, + participation in community events
- 19 Improve safety in the neighborhood**  
Support programs and education that provide a safe environment for all ages in all locations
- 20 Ensure access to education + resources**  
Make incentives, rebates, discounts widely known and support home ownership education
- 21 Attract development that support day-to-day community needs**  
Encourage businesses and development of all kinds that support healthy and safe living in Belmont
- 22 Expand year-round indoor and outdoor sports facilities**  
Develop/expand facilities that support affordable youth and adult sports programs



# Community Building

## Improve communication in the neighborhood

- Single hub for sharing of community information and events
- Multiple outlets for sharing information (library, park bulletin board, social media, newsletter, ...)
- Ensure all residents and businesses are aware of these resources

## Community Building

1



## Create a central community outdoor event space

- Farmer's market
- Amphitheater for performances
- Public art / murals
- Connected to sports activities

## Community Building 2





## Increase police presence in the neighborhood

- Encourage regular attendance by police officers at community events
- Advertise new substation at Belmont Rec Center
- Consider a second location in the neighborhood

## Community Building

3





## Support / enhance existing community institutions

- Youth
- Seniors
- Arts + culture
- Health-related
- Sports



## Community Building

4

# Health + Recreation



## Improve access to healthy food

- Grocery store(s)
- Community gardens
- Farmer's market
- Existing food programs

## Health + Recreation

5



## Increase access to local health care

- Medical clinic
- Pharmacy
- Urgent care clinic
- Mental health support
- Mobile / in-home support

## Health + Recreation

6





## Increase opportunities for outdoor activity

- Pool accessibility
- More (smaller) playgrounds
- Improved playground equipment
- Inclusive design standards
- Outdoor cooking
- Special sensory garden

## Health + Recreation

7





## Provide outdoor lighting in public areas

- Dog park
- Bus stops
- Along streets/sidewalks
- Around Belmont Community Center

## Health + Recreation

8



# Environment



## Encourage connection to nature

- Improve park equipment / facilities in existing parks
- Increase number of playground areas, esp. near apartments
- Child- and family-friendly outdoor recreation facilities
- Educational signage in parks
- Public restrooms + drinking fountains
- Outdoor cooking facilities

## Environment

9





## Reduce environmental risks

(heat, cold, flood)

- Support energy-efficient buildings to reduce utility bills
- Increase tree canopy to reduce urban heat island effect
- Grants for raingardens, stormwater drainage, sump pumps
- Review / enforce stormwater policies
- Manage fertilizer / chemical use
- Resiliency center

## Environment

10





## Maximize recycling + composting

- Create a recycling drop-off center in the neighborhood
- Advocate for a city-wide curbside recycling program
- Encourage backyard composting or a composting center

## Environment

11





# Mobility + Transportation

## Create safer paths to schools / parks / library

- Redesign school dropoff zone / protocol along 14<sup>th</sup> Street
- Repair broken / missing sidewalks around school and activity zones
- Redesign pathways from Belmont to the library

## Mobility + Transportation

12





## Improve pedestrian and cyclist experience within neighborhood

- Catalyze complete street projects within the neighborhood
- Accelerate bike plan projects in the neighborhood
- Build sidewalks where gaps currently exist
- Increase marked crosswalks
- Implement accessible design guidelines along walking paths

## Mobility + Transportation

13





## Improve pedestrian and cyclist experience to destinations outside the neighborhood

- Provide safer pathways to UNL campus and downtown Lincoln
- Complete and connect to an integrated bike/trail network
- Improve bridge over 180 between Belmont and West Lincoln

## Mobility + Transportation

14





## Slow car traffic on neighborhood streets

- Redesign school drop-off zone on 14th Street
- Incorporate traffic calming measures on faster streets
- Add or improve crosswalks at key intersections
- Eliminate four-way non-stop intersections

## Mobility + Transportation

15



## Improve bus transit experience

- Increase bus frequency
- Install better bus stops (shelter with lighting)

## Mobility + Transportation

16





# Housing + Development

## Maintain access to affordable housing

- Create pathways to home ownership
- Connect households with education / resources
- Increase diversity of housing options
- Ensure options to age in place
- Consider property tax relief plan

## Housing + Development

17





## Reinforce pride of neighborhood

- Support minor home repair grants
- Home repair education and tool library
- Education on city regulations
- Coordinate dumpster days / bulk pickup days with the city
- Neighborhood events (such as SNAC Summer of Fun)

## Housing + Development

18



## Improve safety in the neighborhood

- Crime watch program
- Signage and education
- Access to activities year-round

## Housing + Development

19



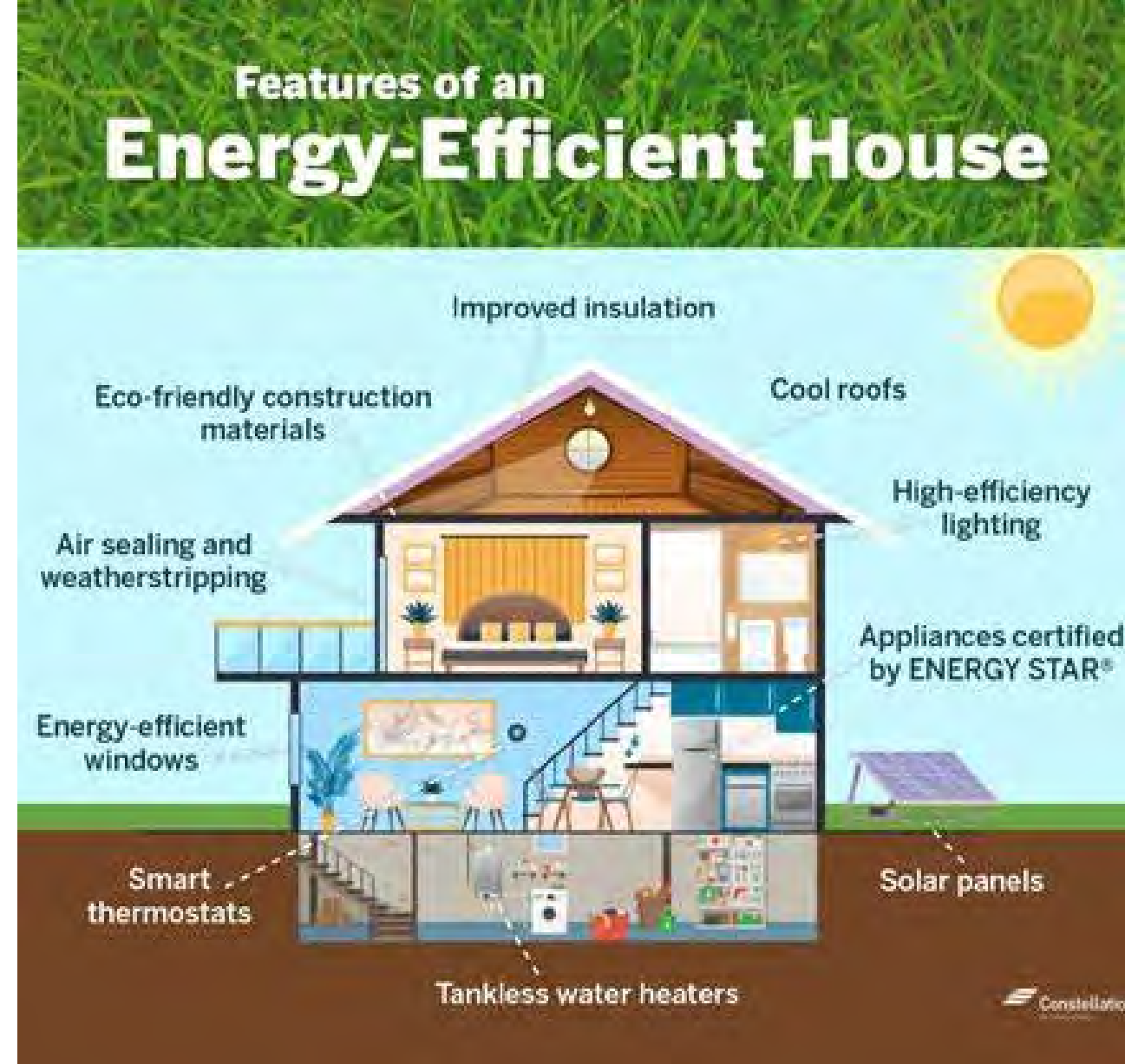


## Ensure access to homeowner education and resources

- Tax incentives / rebates
- Utility discount programs (thru energy-efficiency)
- Lead abatement program
- Home ownership education

## Housing + Development

20



## Attract development that supports day-to-day needs

- Groceries
- Ethnic market
- Coffee shop
- Restaurants
- Recreation

## Housing + Development

21





## Expand year-round indoor and outdoor sports facilities

- Basketball
- Volleyball
- Soccer / football
- Swimming
- Baseball

## Housing + Development

22



**Share Your Priorities**



# Consider your top 10 priorities

## Drop your marbles in the bags:

- Blue marbles (top 1 + 2)
- Clear marbles (top 3 thru 10)

# Priorities / Marbles

## Belmont Neighborhood Redevelopment Plan Community Open House #2

Thank you for your time to share your priorities with us! Please use this sheet to help organize your thoughts. Mark what you think are the 10 most important goals and then head to the stations with your marbles!

### Community Building

- 1 Improve communication in the neighborhood**  
Create and advertise a single hub to gather information and events; distribute via multiple outlets
- 2 Create a central community outdoor space**  
Satisfy a desire to have a central place for community activities like a farmer's market, performances, public art, recreation
- 3 Increase police presence in the community**  
Encourage a greater sense of safety in the community with positive community police presence
- 4 Support/enhance existing community institutions**  
Advertise existing programs within the community and build upon those to meet current needs

### Health + Recreation

- 5 Improve access to healthy food**  
Support integration of healthy food offerings within the community
- 6 Increase access to local health care**  
Ensure widespread access to medical, mental health, pharmacies, and home health
- 7 Increase opportunities for inclusive outdoor activity**  
Improve existing pool and playground equipment and increase amenities that support inclusive outdoor gathering
- 8 Provide outdoor lighting in public areas**  
Improve safety of public areas such as parks and bus stops with appropriate outdoor lighting

### Environment

- 9 Encourage connection to nature**  
Increase and improve park facilities in the neighborhood to encourage greater engagement with the natural environment
- 10 Reduce environmental risks (heat, cold, flood)**  
Support energy-efficiency in all buildings, stormwater management, and reduction in urban heat island; establish a resiliency center
- 11 Maximize recycling + composting**  
Encourage recycling and composting through education and community facilities/programs

### Mobility + Transportation

- 12 Create safer paths to schools / parks / library**  
Redesign specific areas to provide safer access for pedestrians and cyclists to community hubs
- 13 Improve pedestrian + cyclist experience within the neighborhood**  
Catalyze and complete sidewalk, bikeway, and street design + construction that offer safer pathways for all means of travel
- 14 Improve pedestrian + cyclist experiences to destinations outside the neighborhood**  
Provide safe pathways from Belmont to West Lincoln, Downtown, and the University
- 15 Slow car traffic on neighborhood streets**  
Redesign school drop-off zone on 14th and incorporate other traffic calming measures to slow traffic
- 16 Improve bus transit experience**  
Design transit riders experience with routes, frequency, and bus stop accommodations

### Housing + Development

- 17 Maintain access to affordable housing**  
Support programs that ensure affordable + diverse housing options for all in the neighborhood
- 18 Reinforce pride of neighborhood**  
Support minor home repair, neighborhood cleanup, + participation in community events
- 19 Improve safety in the neighborhood**  
Support programs and education that provide a safe environment for all ages in all locations
- 20 Ensure access to education + resources**  
Make incentives, rebates, discounts widely known and support home ownership education
- 21 Attract development that support day-to-day community needs**  
Encourage businesses and development of all kinds that support healthy and safe living in Belmont
- 22 Expand year-round indoor and outdoor sports facilities**  
Develop/expand facilities that support affordable youth and adult sports programs







