

## 2. Community Vision

Broad based, inclusive community outreach efforts for this plan encouraged active participation in identifying the vision, goals, and needs of the region. To create a vision that reflects the needs and desires of the residents of Lincoln and Lancaster County, the Lincoln MPO reached out to stakeholders across the region through internet surveys, open houses, and focus groups. The City of Lincoln and Lancaster County participated extensively in the development of this plan, as did the local transit agency (StarTran), NDOR, and many community-based organizations and advocacy groups representing the diverse interests of Lincoln and Lancaster County.

---

*What the community LOVES about  
transportation in Lincoln:*

---



### Public Engagement Process

Considering the needs and desires of all populations is critical to the development of a transportation plan that creates access to opportunity for people of all ages, incomes, and abilities. Public engagement lays the foundation for the

development and implementation of an integrated multimodal transportation system that supports community development and furthers the region's transportation goals.

### Equity

Early in the L RTP planning process, the project team developed a Public Involvement Action Plan outlining the steps to implement the requirements of the *Lincoln MPO Public Participation Plan*, as amended February 20, 2014, and to comply with the Federal Transportation Regulations in 23 Code of Federal Regulation (CFR) Part 450. The goal of the MPO outreach activities was to ensure that all community members regardless of race, color, religion, income status, national origin, age, gender, sexual orientation, disability, marital status, or political affiliation, had an equal opportunity to participate in the MPO's decision-making process.

### Public Input Phases

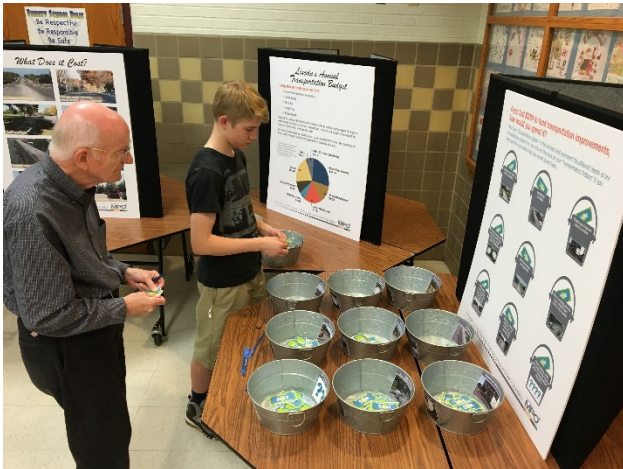
The Public Involvement Action Plan for the L RTP Update includes three phases of community outreach, each of which focuses on a key theme:

1. **Transportation Needs** (January and February 2016) – Identify current and future conditions, including deficiencies and problems, and solicit ideas for transportation improvements, goals, and objectives.
2. **Understanding Priorities** (May and June 2016) – Input on investment priorities and project priorities.
3. **Validating a Vision** (September and October 2016) – Public feedback on draft L RTP Update recommendations and report.

The first phase of the community outreach (Transportation Needs) involved eight focus group meetings with stakeholders representing various interests in the community; a public meeting on February 18, 2016; and an online survey.



The second phase (Understanding Priorities) included a public meeting on May 3, 2016, and an online survey that was open for two months and completed by more than 820 community members. The input received during this community outreach phase was instrumental in understanding the community's transportation priorities and was integrated into the project prioritization process and the resource allocation scenarios.



The third phase of community outreach (Validating a Vision) occurred from September 20 – October 31, 2016, and provided various opportunities for public feedback on the draft LRTP. A joint public meeting for LPLAN 2040 and the LRTP was held on September 27, 2016.

The Planning Commission supplemented direct input from the community. The LRTP Project Team met approximately monthly with the Planning Commission. The Planning Commission represents the voice of the community and will provide a formal recommendation within the MPO decision-

making process. All elements of the LRTP Update process have been presented and discussed with the Planning Commission; their input is reflected in the plan element recommendations.

### Advertisement

Public meeting flyers were distributed to the participants of the January 2016 focus group meetings and posted on the LRTP Update webpage. More than 1,800 email notifications were sent to individuals on the Lincoln Planning and Neighborhood email lists. The public meeting notices were posted in the local news section of the *Lincoln Journal-Star* for five days before each meeting.

Share your vision for transportation in Lincoln!

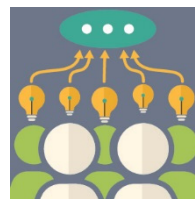
**PUBLIC OPEN HOUSE** LINCOLN MPO  
METROPOLITAN PLANNING ORGANIZATION

Thursday,  
February 18, 2016  
5:30 - 7:30 pm  
Culler Middle School  
5201 Vine Street

For more information or to submit comments please contact us at:  
Phone: Mike Brienza, Lincoln MPO  
402.441.6369  
Email: [mbrienza@lincoln.ne.gov](mailto:mbrienza@lincoln.ne.gov)  
Website:  
<http://www.lincoln.ne.gov/city/plan/lrtupdate/>

Lincoln Long Range Transportation Plan Update

### Key Themes of Public Input



Public outreach helps the Lincoln MPO establish priorities, policies, and ultimately investment strategies that meet the vision and needs of the community.

Information gathered throughout the LRTP public engagement process resulted in several recurring themes as listed below:

- Technology has changed and will continue to change transportation in Lincoln (e.g., intelligent transportation systems, electric vehicles, driverless cars, automated convoys).

- As Lincoln continues to grow (both infill development in the downtown core and new development in the fringe areas), the transportation network needs to support evolving travel needs.
- Changing demographics and travel preferences will continue to shape the mobility needs of the community; an increasing number of Millennials prefer not to drive, and an aging population may no longer be able to drive.
- The need for better north-south roads and support for the East Beltway.
- The importance of maintaining the transportation system and making the system function as efficiently as possible.
- The community values Lincoln's extensive trail network and would like to see more on-street bike facilities.

When asked what they love about transportation in Lincoln, the most common responses included the N Street protected bike lane, the trails, the availability of travel options (bus, bike, walk), the grade separations, and the ability to get anywhere in Lincoln within 20 minutes. When asked what they would change about transportation in Lincoln, the most common responses included the car-centric mentality, signal timing, and better balance among all travel modes. **Appendix B** includes complete documentation of the public outreach activities and input.

## Transportation Vision and Principles

---

*The vision for transportation in Lincoln and Lancaster County is a safe, efficient and sustainable transportation system that enhances the quality of life, livability, and economic vitality of the community.*

---

The following five principles guide the plan toward that vision.

**One Community:** In Lincoln and Lancaster County, the unifying qualities of transportation will be emphasized. Neighborhoods, activity and employment centers, rural communities, and open lands should be connected by a continuous network of public ways. The transportation network needs to sustain the One Community concept by linking neighborhoods and rural communities.

### **A Balanced Transportation System:**

Transportation planning in Lincoln will be guided by the principle of balancing needs and expectations. It will recognize that transportation is a means to the goal of a unified, livable, and economically strong community. The system needs to move people and goods effectively around the community, while minimizing impacts on established neighborhoods, investments, and the natural environment. The concept of balance also applies to transportation modes. While the system must function well for motor vehicles, it should also promote public transportation, bicycling, and walking as viable alternatives that support the public health, safety, and welfare of the community.

### **Emphasis on Technology in Transportation:**

New transportation technologies are emerging to meet the challenges of increased demand on the transportation network. Connected and autonomous vehicles, alternative fuels, traffic analytics, on-road communications, Intelligent Transportation Systems (ITS) deployment, corridor signal optimization, among many other transportation technologies, offer efficient and cost-effective solutions to enhance the regional transportation systems.

**Transportation as a Formative System:** As linked systems, transportation and land use are subject to change by growth and development. The land use plan, which includes projections of future development, determines the character of the transportation plan. On the other hand,

transportation has a major impact on the form of developing areas. Lincoln and Lancaster County will use transportation improvements to reinforce desirable land use development patterns.

**Planning as a Process:** Transportation planning is a dynamic process, responding to factors such as community growth, development directions, social and lifestyle changes, and technological advances. Therefore, the Comprehensive Plan and LRTP employ an ongoing process of updates and amendments that respond to these changes. While this plan is intended to guide future decisions regarding the city's transportation system's development, it is merely a guide and is subject to change to meet future community needs.

## Transportation Goals

Creating a performance framework for the LRTP allows a better understanding of how different projects, policies, and investments might affect the region's future. The goals listed below were formulated to represent the community's vision and the desired state for Lincoln and Lancaster County's transportation system. These seven goals are the foundation for performance measures, performance targets, recommended policy, and project implementation actions described in later chapters of this LRTP.



**Maintenance** – A well-maintained transportation system.



**Mobility and System Reliability** – An efficient, reliable, and well-connected transportation system for moving people and freight.



**Livability and Travel Choice** – A multimodal system that provides travel options to support a more compact, livable urban environment.



**Safety and Security** – A safe and secure transportation system.



**Economic Vitality** – A transportation system that supports economic vitality for residents and businesses.



**Environmental Sustainability** – A transportation system that enhances the natural, cultural, and built environment.



**Funding and Cost Effectiveness** – Collaboration in funding transportation projects that maximizes user benefits.