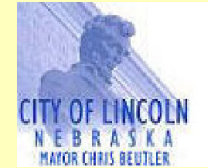




Pedestrian, Bike & Trails

**Lincoln Metropolitan Planning Organization
Transportation Improvement Program**

**Ped, Bike and Trails
FY 2020 - 2023**



- Trail Projects
- Trail Projects
- Existing Parks

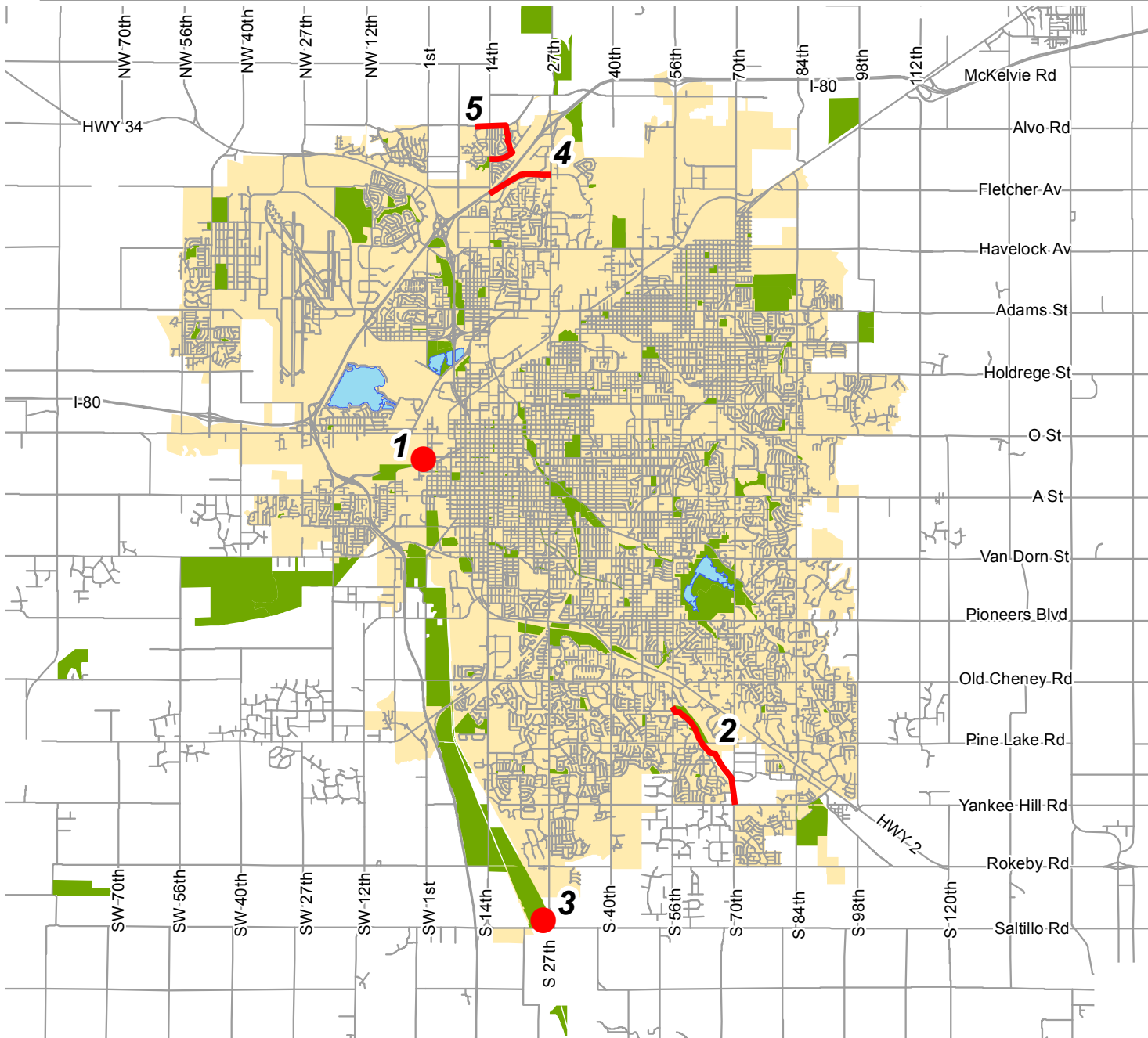
- #1 Rosa Parks Way Trail**
- #2 Beal Slough Trail Project**
- #3 Wilderness Park Bridges**
- #4 Fletcher Landmark Trail**
- #5 Stonebridge Trail**



Lower Platte South
Natural Resources District



**Consult the detailed project descriptions
and funding summary for further information.**



2020-2023 LINCOLN CITY/LANCASTER COUNTY, NEBRASKA TRANSPORTATION IMPROVEMENT PROGRAM					AGENCY: Pedestrian, Bike & Trails DIVISION: Planning Area Projects										
PROJ NO (Map)	PROJECT (Location & Distance) (Improvement Description)	PROGRAMMED EXPENDITURES & FUNDING SOURCES (FS) (000's)													
		PRIORITY PROJECTS					COST BEYOND PROGRAM	TOTAL PROJECT COSTS							
		PRIOR FISCAL YEARS	FS	2019-20	FS	2020-21			FS	2021-22	FS	2022-23	FS		
(Control Number)	(Project Number)	(Work Phase)													
1	Lower Platte South Natural Resource District Rosa Parks Way Trail Railroad Undercrossing trail west of 1st and J Street, 900 feet long and 10' wide concrete surface.	PE	41.6	TA1											
		PE	10.4	NR											
		ROW			17.6	TA1									
		ROW			4.4	NR									
		Construction			609.6	TA1									
		Construction			152.4	NR									
		Construction			50.0	RT									
		Construction			5.0	GP									
		CE			97.6	TA1									
		CE			24.4	NR									
	C.N. 12945	ENH-55(164)	TOTAL	52.0		961.0		0.0		0.0		0.0		1,013.0	
2	City of Lincoln Parks & Recreation Department Beal Slough Trail Project Trail project to extend southeasterly along the Beal Slough Channel from 56th Street & London Road to 70th Street and & Yankee Hill Road. The trail will be on city owned property to Pine Lake Road where it will connect with an underpass at Pine Lake Road (included with the street project). The trail will continue southeast parallel to the railroad and the Beal Slough Channel, connecting to 70th Street. Ten foot concrete trail on 20 foot right-of-way. Total 2.22 miles.	ROW			8.0	TA2									
		ROW			2.0	LN									
		Construction					698.6	TA2							
		Construction					174.7	LN							
		CE					95.3	TA2							
		CE					23.8	LN							
		TOTAL	C.N. 13366	TAP-55(182)	TOTAL	0.0		10.0		992.4		0.0		0.0	
3	Wilderness Park Bridges Replace Salt Creek Bridge 1/2 mile north of Saltillo Road. Other bridges to be addressed in the future include the Timber and Cable Bridge over an unnamed tributary to Salt Creek near Hwy. 77 and Rokeby Rd.	Const/CE	359.6	LN											
		Const/CE	7.5	GP											
		Const/CE	20.1	OF											
		TOTAL			387.2		0.0		0.0		0.0		0.0		387.2
4	Fletcher Landmark Trail Trail project for concrete trail to follow primarily alongside Fletcher Street from N. 14th Street to N. 27th Street.	PE			68.8	TA2									
		PE			17.2	LN									
		ROW						20.5	TA2						
		ROW						5.1	LN						
		Construction								504.2	TA2				
		Construction								126.1	LN				
		CE								68.8	TA2				
		CE								17.2	LN				
TOTAL			TOTAL	0.0		86.0		0.0		25.6		716.3		0.0	827.9

2020-2023 LINCOLN CITY/LANCASTER COUNTY, NEBRASKA TRANSPORTATION IMPROVEMENT PROGRAM				AGENCY: Pedestrian, Bike & Trails DIVISION: Planning Area Projects							
PROJ NO (Map)	PROJECT (Location & Distance) (Improvement Description)	PROGRAMMED EXPENDITURES & FUNDING SOURCES (FS) (000's)									
		PRIORITY PROJECTS					COST BEYOND PROGRAM	TOTAL PROJECT COSTS			
		PRIOR FISCAL YEARS	FS	2019-20	FS	2020-21			FS	2021-22	FS
(Control Number)	(Project Number)	(Work Phase)									
5	Stonebridge Trail Design and construction of a 10' wide, concrete bicycle, pedestrian trail, connecting the North 14th Street Trail with the Alvo Road Trail. This trail will begin at North 14th Street and Humphrey Avenue and proceed through the Stonebridge neighborhood	Construction	642.9	TA2							
		Construction	160.1	LN							
		CE	96.4	TA2							
		CE	24.1	LN							
		TOTAL	923.5		0.0	0.0	0.0	0.0	0.0	0.0	923.5
FUNDING SUMMARY											
FEDERAL FUNDS											
	CMAQ (Congestion Mitigation and Air Quality)		0.0		0.0	0.0	0.0	0.0	0.0		
	RTP (Recreational Trails Program)		0.0		0.0	0.0	0.0	0.0	0.0		
	TE (STPB - Sub-Allocation, Transportation Enhancement)		0.0		0.0	0.0	0.0	0.0	0.0		
	TA1 (STP-TA - State Transportation Alternatives Program)		41.6		724.8	0.0	0.0	0.0	0.0		
	TA2 (STP-TA - Lincoln MPO Transportation Alternatives Program)		739.3		76.8	793.9	20.5	573.0			
	TAC (Advanced Construction for STP-TA-Transportation Alternatives Program Funding)		0.0		0.0	0.0	0.0	0.0	0.0		
	SR (SRTS - Safe Routes to School)		0.0		0.0	0.0	0.0	0.0	0.0		
	SUB-TOTAL FEDERAL FUNDING		780.9		801.6	793.9	20.5	573.0	0.0		2,969.9
STATE FUNDS											
	NE (State Revenue / Aids)		0.0		0.0	0.0	0.0	0.0	0.0		
	SUB-TOTAL STATE FUNDING		0.0		0.0	0.0	0.0	0.0	0.0		0.0
LOCAL FUNDS											
	NR (Lower Platte South Natural Resource District Funds)		10.4		181.2	0.0	0.0	0.0	0.0		
	GP (Great Plains Trail Network Private Contributions)		7.5		5.0	0.0	0.0	0.0	0.0		
	RT (Railroad Transportation Safety District)		0.0		50.0	0.0	0.0	0.0	0.0		
	LN (City of Lincoln Funds)		543.8		19.2	198.5	5.1	143.3			
	HIC (City of Hickman Funds)		0.0		0.0	0.0	0.0	0.0	0.0		
	PR (Other Private Contributions)		0.0		0.0	0.0	0.0	0.0	0.0		
	OF (Other Funds)		20.1		0.0	0.0	0.0	0.0	0.0		
	SUB-TOTAL LOCAL FUNDING		581.8		255.4	198.5	5.1	143.3	0.0		1,184.1
TOTAL			1,362.7		1,057.0	992.4	25.6	716.3	0.0		4,154.0
STATUS OF PREVIOUS YEARS PROJECTS											
Lower Platte South Natural Resources District											
		PE	40.0	RTP							
	Salt Creek Levee Trail	PE	10.0	NR							
	N. 14th Street to Cornhusker Highway - develop a 10-foot wide concrete trail on the Oak Creek and Salt Creek Levees. The 4, 950 foot concrete trail will begin where the newly constructed Haymarket Ball	Construction	284.0	RTP							
	Park Trail terminates and continue northeasterly to Cornhusker Highway and connect to the northern segment of the Salt Creek Levee trail system.	Construction	71.0	NR							
		Const/CE	40.0	RTP							
		Const/CE	10.0	NR							