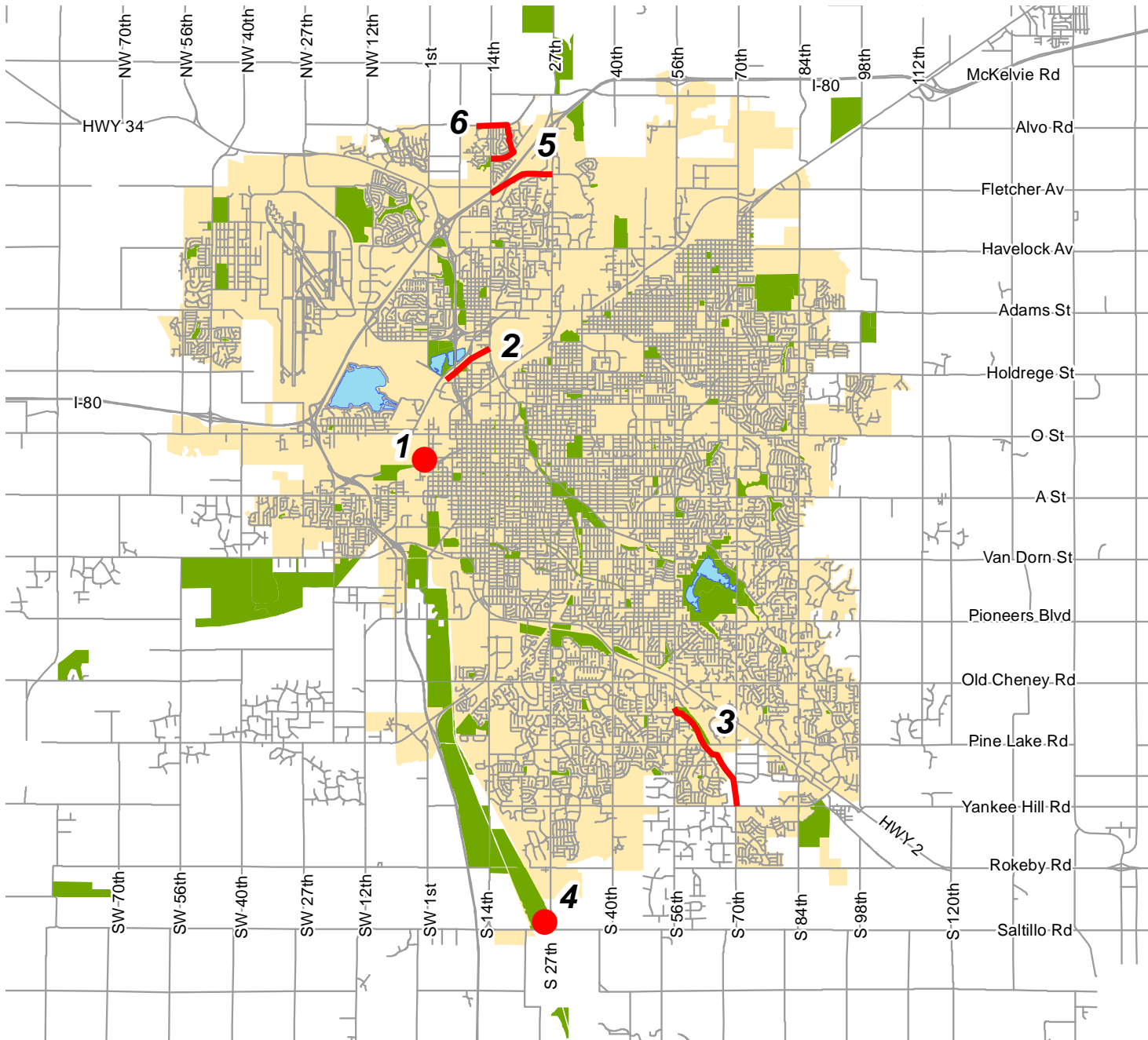




Pedestrian, Bike & Trails

**Lincoln Metropolitan Planning Organization
Transportation Improvement Program**

**Ped, Bike and Trails
FY 2019 - 2022**



- Trail Projects
- Trail Projects
- Existing Parks

- #1 Rosa Parks Way Trail**
- #2 Salt Creek Levee Trail**
- #3 Beal Slough Trail Project**
- #4 Wilderness Park Bridges**
- #5 Fletcher Landmark Trail**
- #6 Stonebridge Trail**



Lower Platte South
Natural Resources District 



**Consult the detailed project descriptions
and funding summary for further information.**

2019-2022 LINCOLN CITY/LANCASTER COUNTY, NEBRASKA TRANSPORTATION IMPROVEMENT PROGRAM					AGENCY: Pedestrian, Bike & Trails DIVISION: Planning Area Projects									
PROJ NO (Map)	PROJECT (Location & Distance) (Improvement Description)	PROGRAMMED EXPENDITURES & FUNDING SOURCES (FS) (000's)												
		PRIORITY PROJECTS					COST BEYOND PROGRAM	TOTAL PROJECT COSTS						
		PRIOR FISCAL YEARS	FS	2018-19	FS	2019-20			FS	2020-21	FS	2021-22	FS	
(Control Number)	(Project Number)	(Work Phase)												
1	Lower Platte South Natural Resource District Rosa Parks Way Trail Railroad Undercrossing trail west of 1st and J Street, 900 feet long and 10' wide concrete surface.	PE	41.6	TA1										
		PE	10.4	NR										
		CE	160.2	TA1										
		CE	40.0	NR										
		ROW			8.0	TA1								
		ROW			2.0	NR								
		Construction			500.8	TA1								
		Construction			125.2	NR								
		Construction			50.0	RT								
		Construction			5.0	GP								
			C.N. 12945	ENH-55(164)	TOTAL	252.2		691.0		0.0	0.0	0.0	0.0	943.2
2	Salt Creek Levee Trail N. 14th Street to Cornhusker Highway - develop a 10-foot wide concrete trail on the Oak Creek and Salt Creek Levees. The 4, 950 foot concrete trail will begin where the newly constructed Haymarket Ball Park Trail terminates and continue northeasterly to Cornhusker Highway and connect to the northern segment of the Salt Creek Levee trail system.	PE	40.0	RTP										
		PE	10.0	NR										
		Construction	284.0	RTP										
		Construction	71.0	NR										
		Const/CE	40.0	RTP										
		Const/CE	10.0	NR										
			TOTAL	455.0		0.0		0.0	0.0	0.0	0.0	455.0		
3	City of Lincoln Parks & Recreation Department Beal Slough Trail Project Trail project to extend southeasterly along the Beal Slough Channel from 56th Street & London Road to 70th Street and & Yankee Hill Road. The trail will be on city owned property to Pine Lake Road where it will connect with an underpass at Pine Lake Road (included with the street project). The trail will continue southeast parallel to the railroad and the Beal Slough Channel, connecting to 70th Street. Ten foot concrete trail on 20 foot right-of-way. Total 2.22 miles.	PE	76.2	TA2										
		PE	19.1	LN										
		ROW			8.0	TA2								
		ROW			2.0	LN								
		Construction					698.6	TA2						
		Construction					174.7	LN						
		CE					95.3	TA2						
		CE					23.8	LN						
			C.N. 13366	TAP-55(182)	TOTAL	95.3		0.0		10.0	992.4	0.0	0.0	1,097.7

2019-2022 LINCOLN CITY/LANCASTER COUNTY, NEBRASKA TRANSPORTATION IMPROVEMENT PROGRAM				AGENCY: Pedestrian, Bike & Trails DIVISION: Planning Area Projects							
PROJ NO (Map)	PROJECT (Location & Distance) (Improvement Description)	PROGRAMMED EXPENDITURES & FUNDING SOURCES (FS) (000's)									
		PRIORITY PROJECTS					COST BEYOND PROGRAM	TOTAL PROJECT COSTS			
		PRIOR FISCAL YEARS	FS	2018-19	FS	2019-20			FS	2020-21	FS
(Control Number)	(Project Number)	(Work Phase)									
4	Wilderness Park Bridges Replace Salt Creek Bridge 1/2 mile north of Saltillo Road. Other bridges to be addressed in the future include the Timber and Cable Bridge over an unnamed tributary to Salt Creek near Hwy. 77 and Rokeby Rd.	PE	20.0	LN							
		PE	10.0	GP							
		Const/CE	12.4	OF	166.0	LN					
		Const/CE			193.6	OF					
		Const/CE			7.5	GP					
		Const/CE			20.1	OF					
		TOTAL			42.4		387.2	0.0	0.0	0.0	0.0
5	Fletcher Landmark Trail Trail project for concrete trail to follow primarily alongside Fletcher Street from N. 14th Street to N. 27th Street.	PE				68.8	TA2				
		PE				17.2	LN				
		ROW						20.5	TA2		
		ROW						5.1	LN		
		Construction									504.2
		Construction									126.1
		CE									68.8
CE									17.2		
TOTAL			0.0		0.0	86.0	25.6	0.0	716.3	827.9	
6	Stonebridge Trail Design and construction of a 10' wide, concrete bicycle, pedestrian trail, connecting the North 14th Street Trail with the Alvo Road Trail. This trail will begin at North 14th Street and Humphrey Avenue and proceed through the Stonebridge neighborhood	PE	72.0	TA2							
		PE	18.0	LN							
		ROW	107.1	TA2							
		ROW	26.7	LN							
		Construction			642.9	TA2					
		Construction			160.1	LN					
		CE			96.4	TA2					
CE			24.1	LN							
TOTAL			223.8		923.5	0.0	0.0	0.0	0.0	1,147.3	

2019-2022 LINCOLN CITY/LANCASTER COUNTY, NEBRASKA TRANSPORTATION IMPROVEMENT PROGRAM				AGENCY: Pedestrian, Bike & Trails DIVISION: Planning Area Projects								
PROJ NO (Map)	PROJECT (Location & Distance) (Improvement Description) (Control Number) (Project Number) (Work Phase)	PROGRAMMED EXPENDITURES & FUNDING SOURCES (FS) (000's)										
		PRIORITY PROJECTS					COST BEYOND PROGRAM	TOTAL PROJECT COSTS				
		PRIOR FISCAL YEARS	FS	2018-19	FS	2019-20			FS	2020-21	FS	2021-22
FUNDING SUMMARY												
FEDERAL FUNDS												
CMAQ (Congestion Mitigation and Air Quality)		0.0		0.0		0.0		0.0		0.0		
RTP (Recreational Trails Program)		364.0		0.0		0.0		0.0		0.0		
TE (STPB - Sub-Allocation, Transportation Enhancement)		0.0		0.0		0.0		0.0		0.0		
TA1 (STP-TA - State Transportation Alternatives Program)		201.8		508.8		0.0		0.0		0.0		
TA2 (STP-TA - Lincoln MPO Transportation Alternatives Program)		255.3		739.3		76.8		814.4		0.0		
TAC (Advanced Construction for STP-TA-Transportation Alternatives Program Funding)		0.0		0.0		0.0		0.0		0.0		
SR (SRTS - Safe Routes to School)		0.0		0.0		0.0		0.0		0.0		
SUB-TOTAL FEDERAL FUNDING		821.1		1,248.1		76.8		814.4		0.0		2,960.4
STATE FUNDS												
NE (State Revenue / Aids)		0.0		0.0		0.0		0.0		0.0		
SUB-TOTAL STATE FUNDING		0.0		0.0		0.0		0.0		0.0		0.0
LOCAL FUNDS												
NR (Lower Platte South Natural Resource District Funds)		141.4		127.2		0.0		0.0		0.0		
GP (Great Plains Trail Network Private Contributions)		10.0		12.5		0.0		0.0		0.0		
RT (Railroad Transportation Safety District)		0.0		50.0		0.0		0.0		0.0		
LN (City of Lincoln Funds)		83.8		350.2		19.2		203.6		0.0		
HIC (City of Hickman Funds)		0.0		0.0		0.0		0.0		0.0		
PR (Other Private Contributions)		0.0		0.0		0.0		0.0		0.0		
OF (Other Funds)		12.4		213.7		0.0		0.0		0.0		
SUB-TOTAL LOCAL FUNDING		247.6		753.6		19.2		203.6		0.0		1,224.0
TOTAL		1,068.7		2,001.7		96.0		1,018.0		0.0		4,900.7
STATUS OF PREVIOUS YEARS PROJECTS												
<u>City of Lincoln</u>												
Lincoln Bike Share System												
Phase 1 of the Lincoln Bike Share Project will install 19 stations and purchase 41 bikes. All stations will include solar panels and are located in the public ROW.												
	PE	8.0	CMAQ									
	PE	2.0	LN									
	NEPA	4.0	CMAQ									
	NEPA	1.0	LN									
	RC	8.0	CMAQ									
	RC	2.0	LN									
	NDOR	8.0	CMAQ									
	NDOR	2.0	LN									
	Construction	572.0	CMAQ									
	Construction	143.0	LN									