



Lincoln Community Art





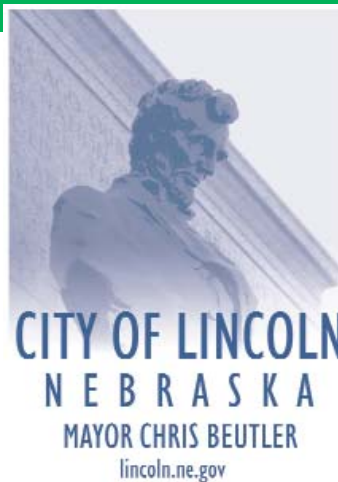
When a community works together to create public art, the result is a powerful and empowering statement of community identity, pride, and ownership. The following examples of Community Art in Lincoln combine grassroots participation with images that speak to local culture and history.

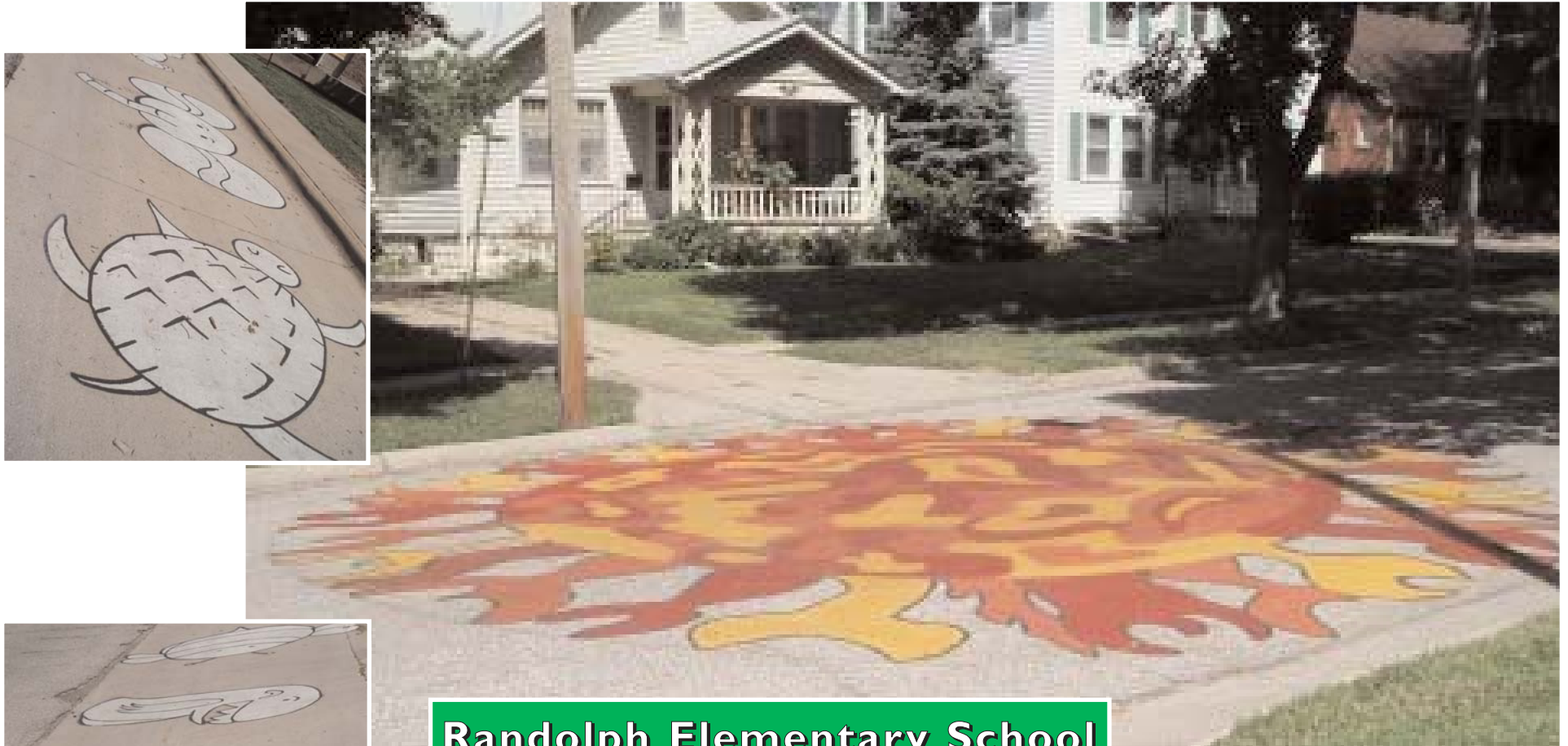
In Lincoln, proposals for new Community Art are considered on a case-by-case basis. Please contact the Urban Development Department for further information. In addition, a **permit** is required to paint a public street.

We would be delighted to include more examples of local community-generated art. If you know basic details about other community art projects, please contact the Urban Development Department at urbandev@lincoln.ne.gov or 402-441-7852.

Published: August 2011

Updated: January 2012





Randolph Elementary School

- ❖ 1024 S. 37th Street
- ❖ Completed in Spring, 2010
- ❖ Designed by a UNL Arts in the Community class using selected artwork created by Randolph Elementary students. UNL students transferred the design to the street surface and 40th and A Neighborhood residents applied the paint.
- ❖ Includes bright sun-like image in 37th Street and black & white images of animals in the school bus loading zone.
- ❖ Coordinated by the 40th and A Neighborhood Association
- ❖ Privately funded

In Lincoln, a [permit](#) is required to paint a street.

In Lincoln, a *permit* is required to paint a street.



Cul-de-sac in front of the Malone Center

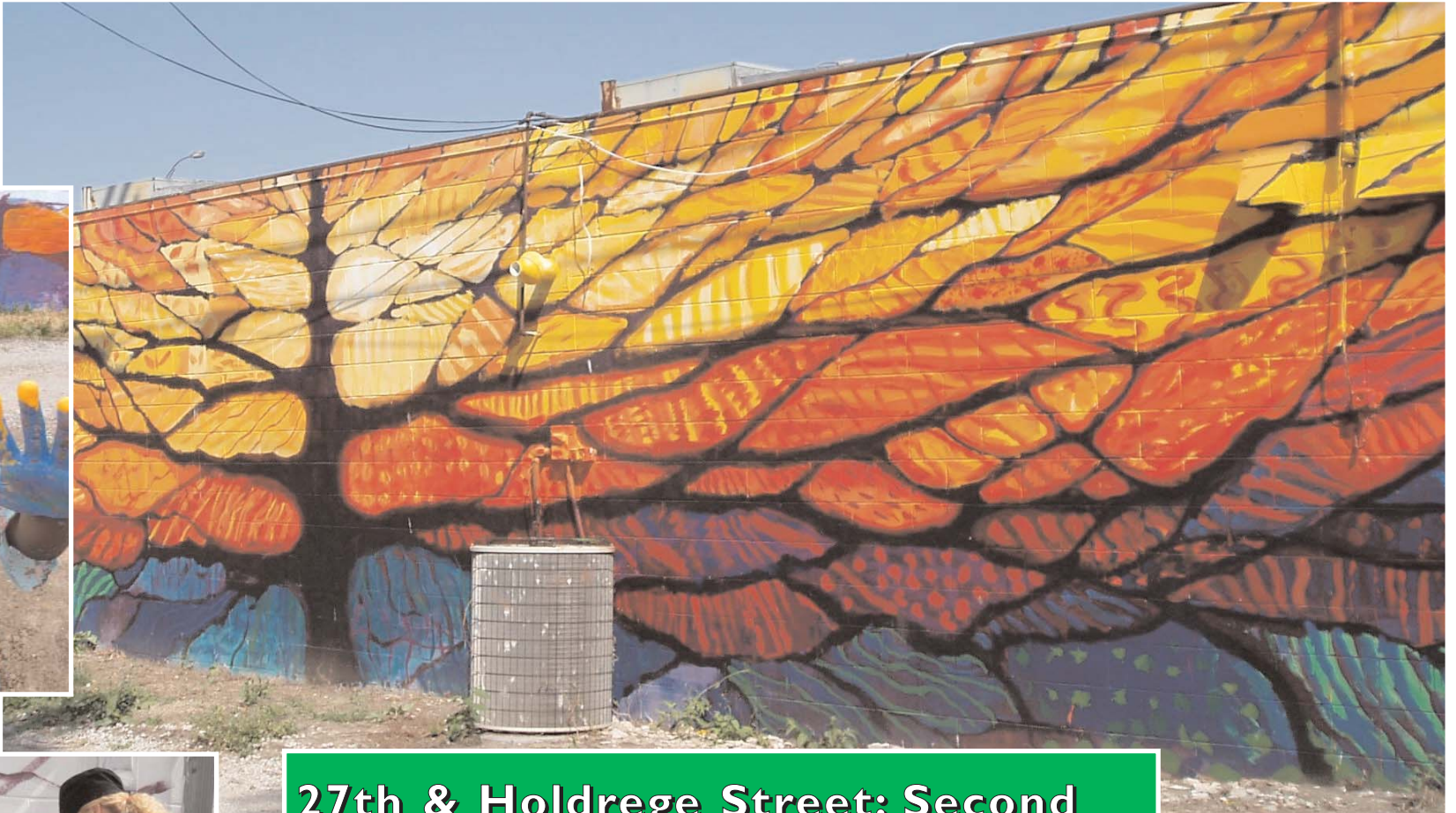
- ❖ 2032 U Street
- ❖ Completed in Summer 2010
- ❖ Designed by Derrek Ashmore and painted by community volunteers.
- ❖ Coordinated by Wendy Bantam, NeighborWorks®Lincoln's VISTA volunteer.
- ❖ Privately funded





27th & Holdrege Street: First Mural

- ❖ 1434 N. 27th Street
- ❖ Completed in 2008
- ❖ Based on cultural themes developed by art students and staff at Clinton Elementary School and painted by a team of local artists, including Leora Platte, Ryan Connolly, Gail Erickson, and Troy Httenbaugh.
- ❖ Coordinated by NeighborWorks@Lincoln.
- ❖ Sponsors include Woods Chairitable Fund and the City Urban Development Dept.



27th & Holdrege Street: Second Mural

- ❖ 1434 N. 27th Street
- ❖ Completed in Summer, 2011
- ❖ Designed by Allison Fees and painted by Clinton Elementary students under her guidance. The design symbolizes the many branches of community that shape our children. The bright, dawn colors denote a new beginning with each child & each day.
- ❖ Coordinated by NeighborWorks@Lincoln.
- ❖ Sponsors & partners include Woods Chairitable Fund, Clinton Elementary School, Cedars, Volunteer Partners, the Clinton Neighborhood Association, and the City Urban Development Dept.



The Two Elephants and the Kingfisher in the Lotus Garden Sea

- ❖ 538 N. 27th Street on the south side of the Le Auto Building
- ❖ Completed Summer, 2009
- ❖ Celebrates the existing and growing Asian communities in Lincoln.
- ❖ Sponsors included: NeighborWorks@Lincoln, Woods Chairitable Foundation, City of Lincoln, Home Depot, North 27th Street Business & Civic Association, Lincoln Arts Council, and Pho Nguyenn Restaurant



La Ilucion / South 13th St.

- ❖ 1916 S. 13th Street
- ❖ Completed on Autumn 2008
- ❖ Illustrating the many growing Latin cultures in Lincoln. The central icon, the sugar skull, is a traditional symbol honoring ancestry and Latin roots. Many other iconic Latin images are included. Painted and designed by Leora Platte, Gail Erickson, and Troy Hattenbaugh.
- ❖ Coordinated by NeighborWorks®Lincoln.
- ❖ Sponsors include Woods Chairitale Fund and the City of Lincoln Urban Development Dept.



Everett School Mural

- ❖ 1235 S. 11th Street
- ❖ Completed on Spring, 2010
- ❖ The mural illustrates the neighborhood surrounding the school, including the State Capitol Building, as seen through the eyes of a child. The elementary school children, guided by art teacher Joan Phelan, drew their neighborhood buildings. Using those images, artist Allison Fees designed the mural and transferred the mural image to panels. Under the watchful eyes of Fees and Betty McGuire (AmeriCorp), students in the Community Learning Center after school program painted the panels. The panels were then mounted on the building wall.
- ❖ Coordinated by NeighborWorks®Lincoln, in collaboration with Everett Elementary School, Everett Community Learning Center, AmeriCorp, and the Mayor's Stronger Safer Neighborhood Project.
- ❖ Sponsors include NeighborWorks®Lincoln, the Nebraska Arts Council, and the City of Lincoln Urban Development Dept.

Project photographs are either courtesy of NeighborWorks®Lincoln or
taken by City of Lincoln staff.