

# MAYOR'S NEIGHBORHOOD ROUNDTABLE

Via Zoom Monday, August 09, 2021, 5:30 p.m.

## Meeting Notes

---

### Attendance

Eleven residents and six City staff attended.

Mayor Gaylor Baird  
Tracy Corr – 40th & A  
Sandra Washington - City Council  
Karl Reinhard – Irvingdale  
Randy Smith - Woods Park  
Greg Baker – Everett  
Ian Edgington – Clinton  
Dan Marvin – UDD  
Brian Praeuner - StarTran – LTU

Paula Baker - Everett  
Mo Neal - Irvingdale  
Russell Miller - Witherbee  
Jon Carlson – Mayor's Office  
Dennis Hecht – Meadowlane  
Richard Pierson - Country Club  
Pat Stear – Hartley  
Wynn Hjermstad – UDD  
June Kucera - LPS CLCs

### Welcome and Introductions

Tracy Corr, Chair, began the meeting with introductions and volunteered to take notes.

### Mayor Gaylor Baird's Comments:

#### Vaccinations:

- The vaccine provides great protection. However, the Delta Variant is different.
- Higher viral loads with Delta Variant resulting in more severe disease and deaths.
- Briefing tomorrow (Tuesday, August 10, 2021) with Health Director Pat Lopez.
- The average number of cases per day doubles every 10-12 days.
- Between July 1 and August 7 daily cases went from 9 to 69
- Hospitalization 7-day average for July increased from 14 on July 1 to 43 by July 31
- The Health Department continues to monitor and offers walk-in clinics.
- 68% of ages 16 and older are vaccinated.
- About 50% of Lincoln residents are fully vaccinated.

### Emergency Rental Assistance:

- Housing and Utility Assistance continuing to be deployed.
- Over \$6.5 million dollars have been distributed to date.
- The eviction moratorium was extended.
- Go to <https://www.lincoln.ne.gov/rent> for more information or to request assistance.
- Progress being made on bipartisan infrastructure funding

### Budget

- Mayor stated it was nice to see so many supporters across all sectors. She is pleased with the positive feedback received.
- Council has put forward some amendments related to adjusting the budget in accordance with how property valuations end up.
- Final adoption of budget on August 23, 2021; therefore, it is not too late to submit comments.

### Transit Development Plan: Brian Praeuner, Transit Planner, Star Tran

- Please **see attachment for Brian's presentation.**

#### Questions

Question: Is there an outside company helping with study?

Answer: Yes, Nelson Nygaard based out of Portland.

- Same firm assisted in 2015.
- Do both small and large transit systems.

Question: Are representatives of underserved populations on committee to help decide routes and stops?

Answer: Working group established that included community representatives, members from the Center for People in Need and Southeast Community College.

Question: Were there any blind representatives included in working group?

Answer: No, there are not really any local blind representatives. The Blind Federation was suggested by an attendee as well as having focus groups for blind riders.

Question: Is StarTran looking at implementing smaller buses and more of them?

Answer: Yes, StarTran is looking at more vehicles, routes and drivers.

- 70% of the cost of bus service is the drivers' wages.

Question: Is there regular demand for service at city's edge?

Answer: StarTran wants to move to serving the highest concentrations of people.

- Land use is less dense at the edge of city.
- The farther you stretch a ride out, more of the community is served but a sacrifice is made in schedule for the rest of riders.
- StarTran feels it is more important to keep service on a regular timetable--for instance, a bus available every 15 minutes.
- StarTran depends on high transfer usage.
- StarTran is also looking at bicycle connections in this budget.
- A feasibility study has been undertaken to look at different locations for a central bus transfer facility. It would include amenities such as a ticket area/booth, security, etc. The biggest hold up is the amount of money needed to create such a central transfer facility. The City applied for a federal grant close to \$17 million to build one.

## **Announcements**

Reminder from Russell Miller to weigh in on road projects regarding the quarter cent sales tax and Lincoln On The Move funds/projects. Direct suggestions to Thomas Shafer or [ltu@lincoln.ne.gov](mailto:ltu@lincoln.ne.gov).

## **Next Meeting / Agenda**

- Police chief introduction
- Tree trimming
- How to distribute newsletters; get word out to neighbors about events
- Discussion re: Signs "selling" items for joining and membership

## **Adjourn**

The meeting adjourned at approximately 6:30

*Respectfully submitted, Tracy Corr*





startran tdp

## Mayor's Neighborhood Round table Meeting

August 9, 2021





# Study Overview



## Review existing conditions

- Routes, schedules, ridership, destinations, paratransit trips
- Demographics, employment, travel patterns



## Engage the community

- Transit riders
- Bus operators and transit staff
- Representatives of community organizations



## Develop a strategic plan

- Route and schedule improvements
- Short- and long-term recommendations

# TDP Tasks



## Task 1: Project Management, Goals & Vision

- Ongoing project management
- Development of goals and vision statement

## Task 2: Comprehensive Operations Analysis

- Data collection and document review
- Market and Service Analysis
- Service Reliability Analysis

## Task 3: Microtransit Analysis

- Evaluation of VanLNK program and recommendations

## Task 4: Update Service Standards/Policies

- Update to existing service standards/policies

## Task 5: Evaluate Transit Network Design

- Development of three draft network design alternatives
- Network design workshop
- Presentation of alternatives to the public

## Task 6: Develop Priority List of Improvements

- Development of recommended service plan
- Presentation of recommended service plan to the public

## Task 7: Public Outreach and Community Engagement

- Community engagement (TDP Working Group, stakeholders, public meetings, etc.)
- Staff focus groups and workshops
- Onboard passenger survey and community survey

## Task 8: Draft and Final TDP

## Task 9: Full Fare Analysis

- Evaluation of fare structures and policy
- Future fare structure recommendation

# Project Timeline



**2021**

**JUNE** ★ Project initiation

**JULY** ★ Community survey, virtual Town Hall

**JULY 29TH** 👤 **VIRTUAL TOWN HALL**

**AUGUST** ★ Draft service and market analysis

**SEPTEMBER** ★ On-board passenger survey

**OCTOBER/NOVEMBER** ★ Public input on draft service alternatives

**OCT/NOV (TENTATIVE)** 👤 **PUBLIC MEETINGS TO PRESENT DRAFT SERVICE ALTERNATIVES**

**DECEMBER** ★ Development of preferred service alternative

**2022**

**JANUARY/FEBRUARY** ★ Public input on preferred service alternative

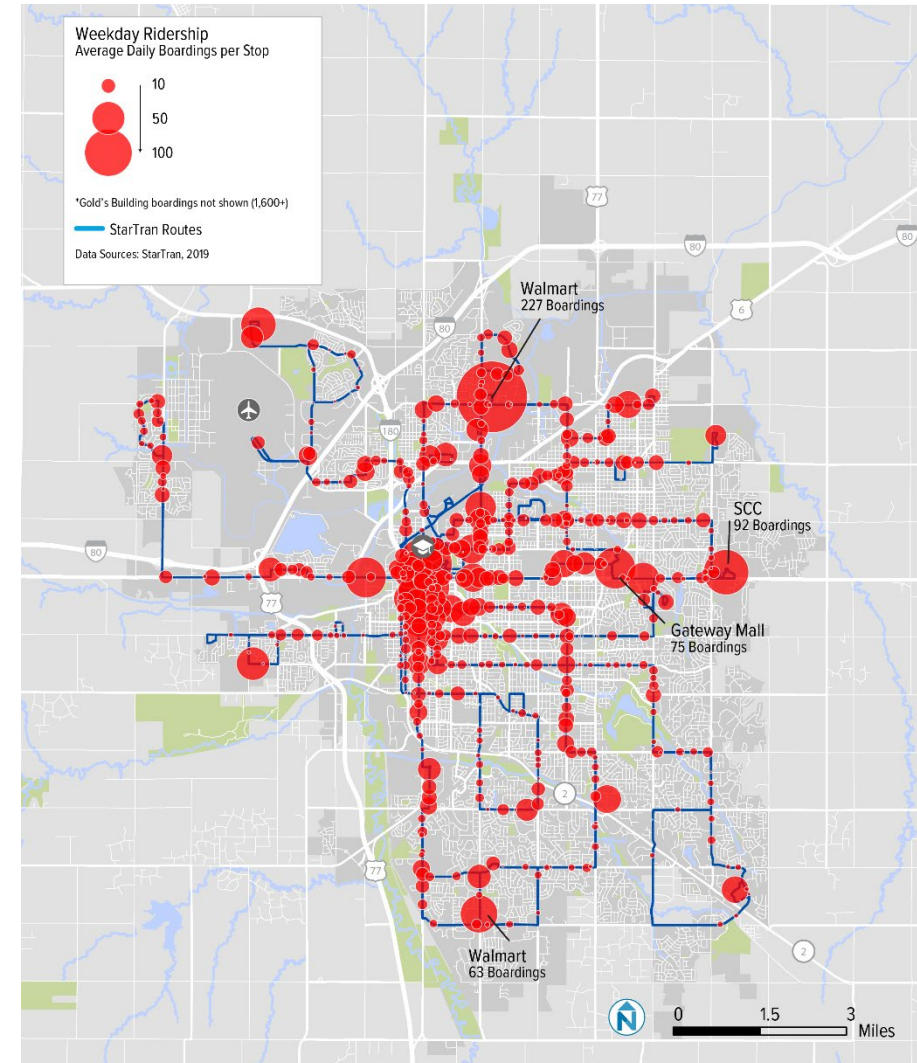
**JAN/FEB (TENTATIVE)** 👤 **PUBLIC MEETINGS TO PRESENT PREFERRED SERVICE ALTERNATIVE**

**FEBRUARY/MARCH** ★ Draft and Final TDP

# Existing StarTran Network



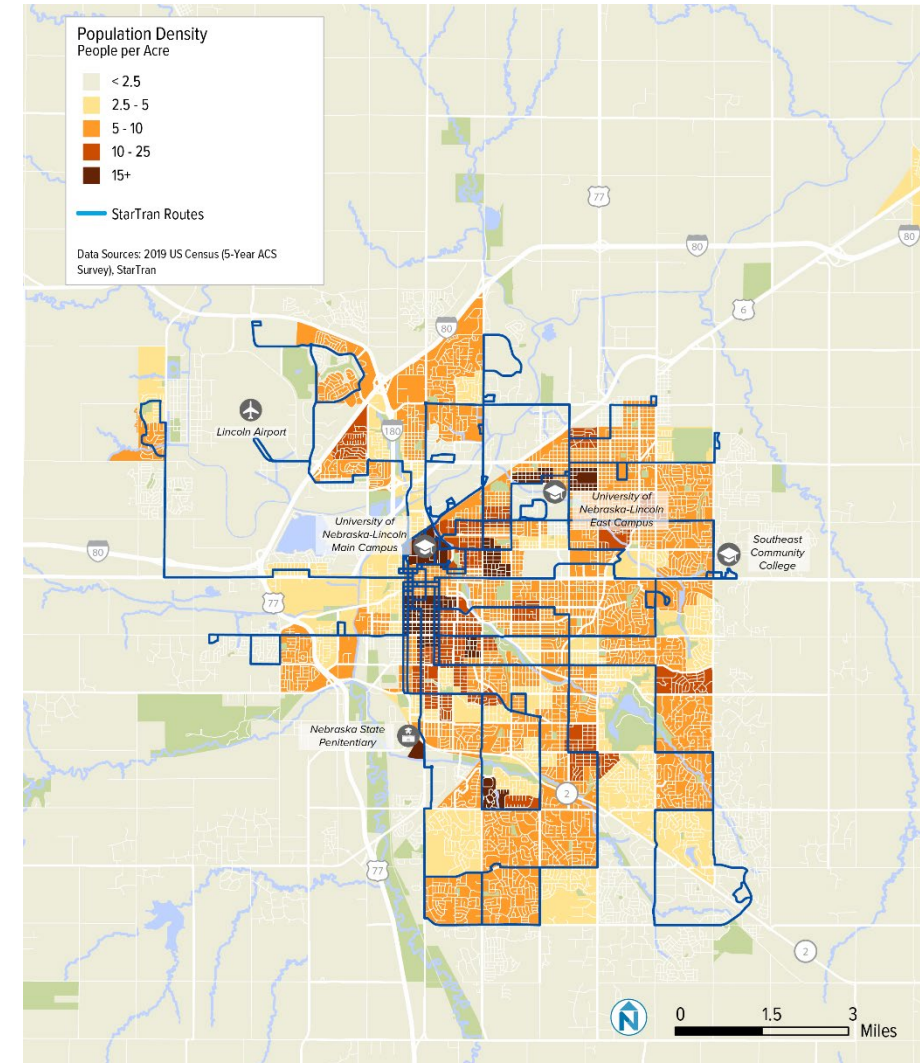
- Over 1,600 daily boardings at Gold's Building transfer facility
- Key destinations
  - University of Nebraska - Lincoln
  - Southeast Community College
  - Walmart
  - Gateway Mall
- High ridership along:
  - 16<sup>th</sup> St Corridor
  - 48<sup>th</sup> St Corridor
  - Holdrege St Corridor



# Population Density

## Population density is highest near downtown Lincoln

- Population density is moderate to low throughout much of the service area
- Population density is highest:
  - Around downtown Lincoln
  - Near UNL and UNL-East Campuses
  - Along 9<sup>th</sup> and 16<sup>th</sup> Streets south of downtown
- All areas with high population density are currently served by StarTran service

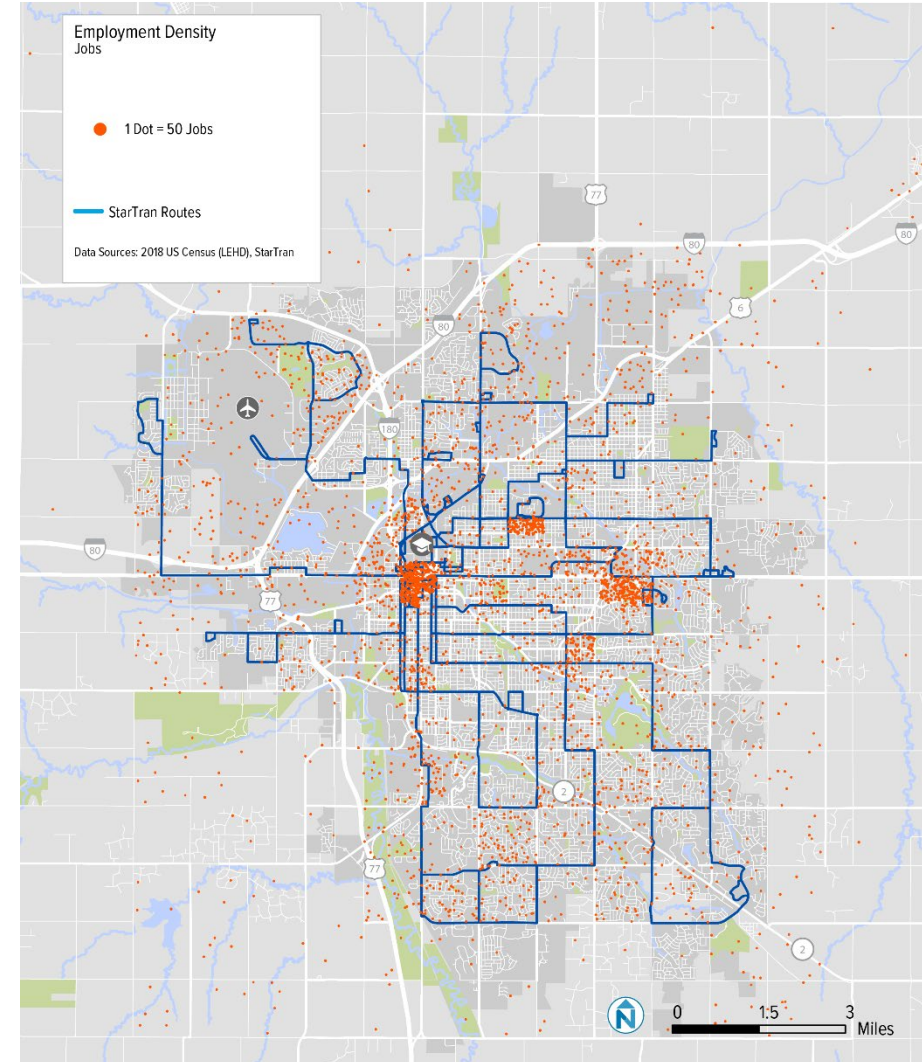




# Employment Density

Jobs are spread throughout the region

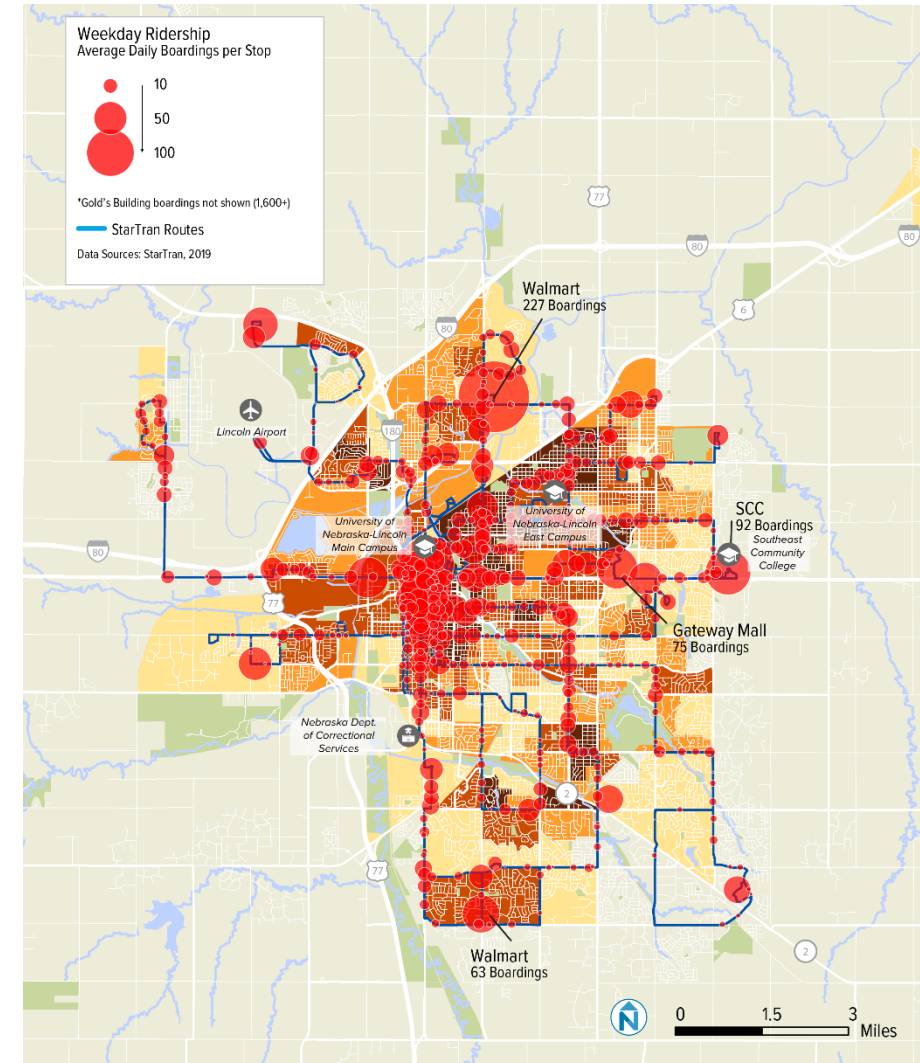
- Highest employment concentrations
  - Downtown
  - State Capital
  - University of Nebraska – Lincoln
- Multiple employment hubs outside of downtown
  - UNL – East Campus
  - Gateway Mall
  - St. Elizabeth's Medical Center & Veteran's Hospital
  - Bryan Medical Center East Campus
- Large employment hubs are currently served by StarTran



# Transit Propensity Index

## Socioeconomic factors and how likely you are to ride

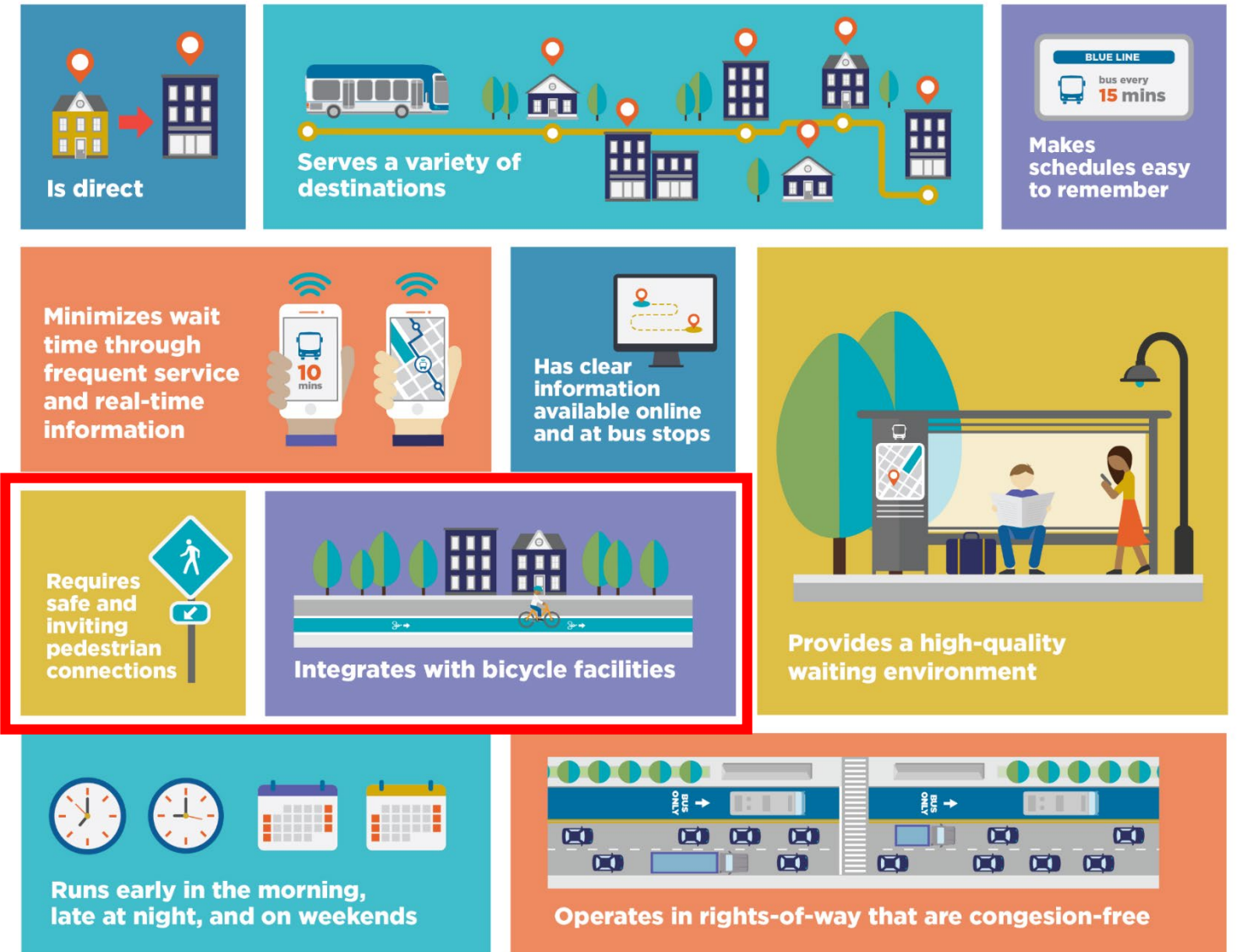
- Areas with high transit propensity generally have higher ridership
- Employment hubs and retail destinations with lower transit propensity also generate ridership
  - Walmart
  - Southeast Community College
  - Kawasaki



# High-Quality Transit Service...



- Ensuring good access is a critical piece of providing high quality transit service (among many other elements)
- Most people begin or end their trip walking or rolling to a stop
- Transit providers often need to coordinate with other agencies to ensure good access to transit



# Community Engagement



- **We are asking questions like:**
  - Where should StarTran go that it does not today?
  - Are there times that transit should run that it does not today?
  - Any safety or accessibility concerns?
  - Any other comments or questions?

**We want to hear about access to transit issues!**

[www.surveymonkey.com/r/StarTranTDP](https://www.surveymonkey.com/r/StarTranTDP)





# Next Steps

- Review community feedback
- Develop service concepts in collaboration with staff
- Present service concepts to the community in the Fall



