



CITY OF LINCOLN CONTINUUM OF CARE A HOMELESS SERVICE SYSTEM

Mayor's Neighborhood Roundtable - January 2023

- Officer Melissa Ripley, LPD Homeless Outreach Officer, Lincoln Homeless Coalition Chairperson 402 441 6000, lpd1331@lincoln.ne.gov
- Matt Martinosky, CenterPointe, Coordinated Critical Service Team Lead 402-797-1664 mmartinovsky@centerpointe.org
- Jeff M. Chambers, MA, UNL-Center on Children, Families, and the Law, Community Services Division Director 402 472 3479, jchambers1@unl.edu



CITY OF LINCOLN CONTINUUM OF CARE (COC)

- The goal of Lincoln's Continuum of Care **is to stably house all persons who are experiencing homeless or at risk of experiencing homelessness in the most appropriate and effective housing to achieve stable, permanent housing.**
- Make homelessness rare, brief, and non-recurring.



- Homeless Prevention and Diversion
- Street Outreach – Critical Services Team
- Emergency Shelter
- Transitional Housing
- Rapid Rehousing
- Permanent Supportive Housing
- Homeless Management Information System (HMIS)
- Coordinated Entry
- Planning
- Involving those with Lived Experience in Developing Solutions



CITY OF LINCOLN COC ACCOMPLISHMENTS

- Reduced the number of persons experiencing unsheltered and sheltered homelessness by 57% in the last 10 years.
- Increased the amount of U.S. Department of Housing and Urban Development funding to Lincoln by 83% in past 5 years.
- One of 60 communities to be recognized by the United States Interagency Council on Homelessness as having ended U.S. military veterans' homelessness.



RECENT LINCOLN COC – ANNUAL DATA

OCTOBER 2021 – SEPTEMBER 2022

CoC Code: NE-502 Name: 11.10.2022 NE-502 Official Submission 1 Report Period: 10/01/2021 - 09/30/2022 Submission Type: official

System Performance Overview

Total number of households and people served in the homeless system and performance overview for 10/01/2021 - 09/30/2022 for 11.10.2022 NE-502 Official Submission 1

 1,713
HOUSEHOLDS

 2,208
PEOPLE

133 

Days Homeless

Average cumulative days homeless

[VIEW DETAILS](#)

23% 

Exits

Exits to permanent destinations

[VIEW DETAILS](#)

7% 

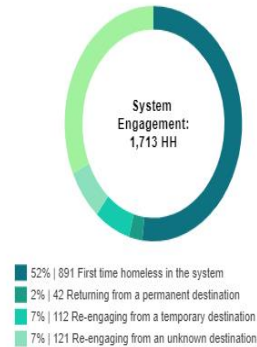
Returns

Returns after exits to permanent destinations

[VIEW DETAILS](#)



System Engagement



CoC Code: NE-502 Name: 11.10.2022 NE-502 Official Submission 1 Report Period: 10/01/2021 - 09/30/2022 Submission Type: official

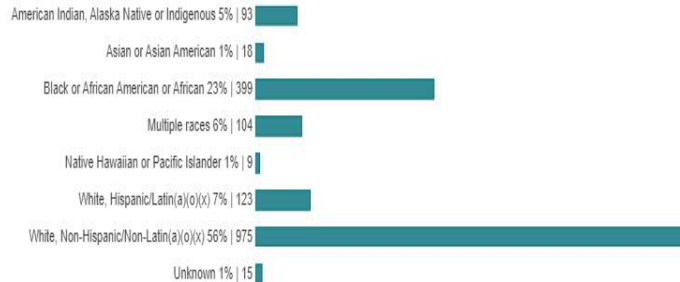
Household Composition



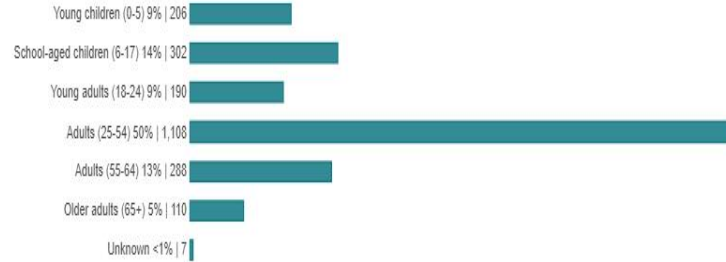
Gender of HoH and Adults



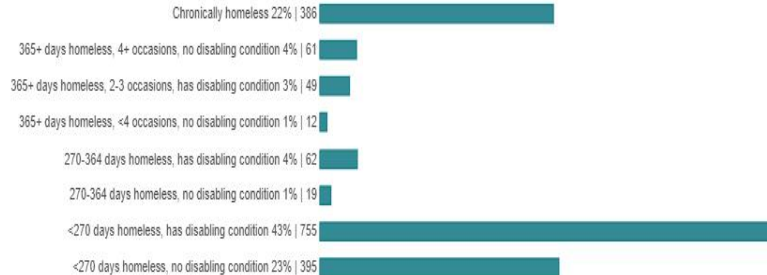
Race and Ethnicity of HoH and Adults



Age of All Persons in Household

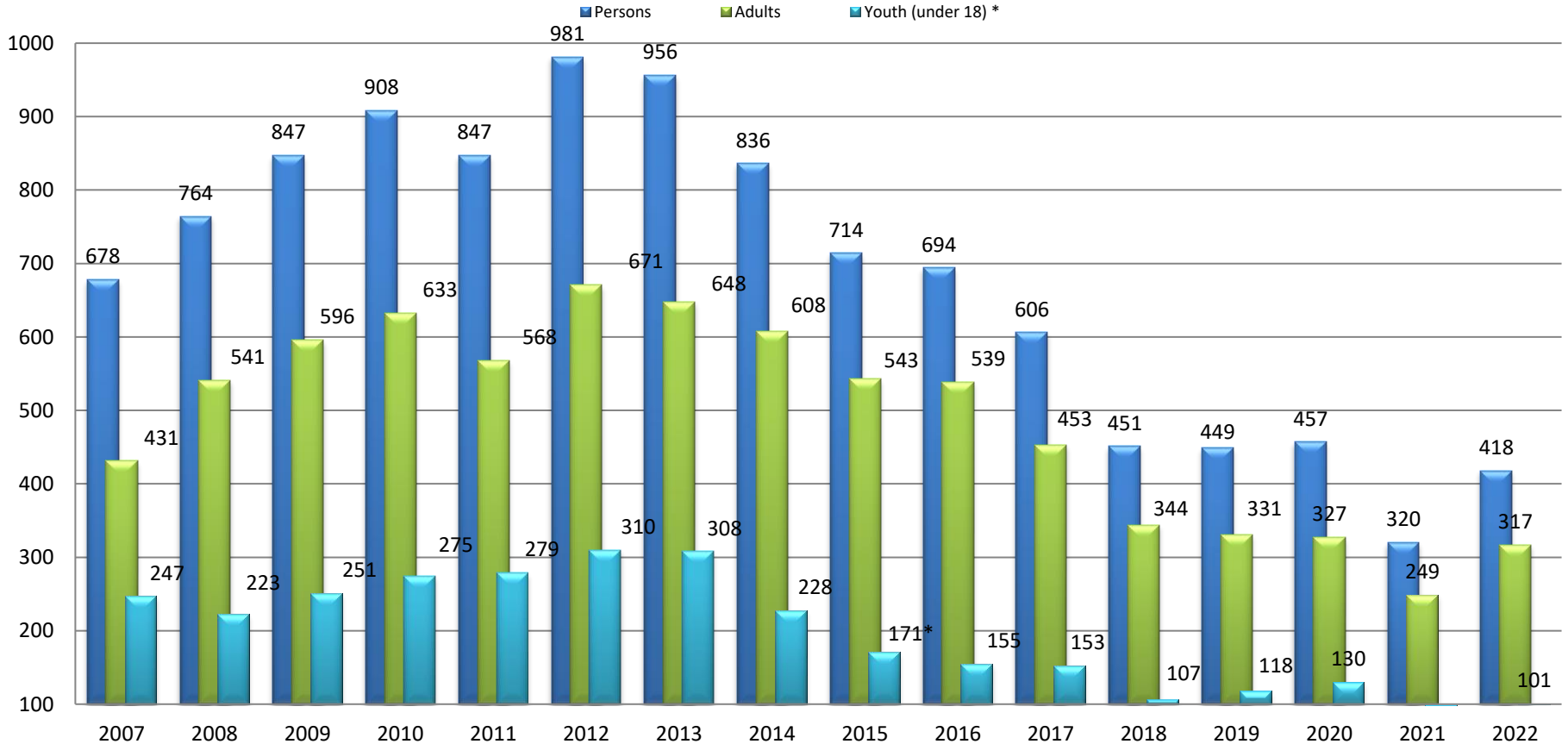


Chronic Homelessness and Disabling Condition of HoH and Adults



Lincoln Homeless Point in Time Count

2007 - 2022

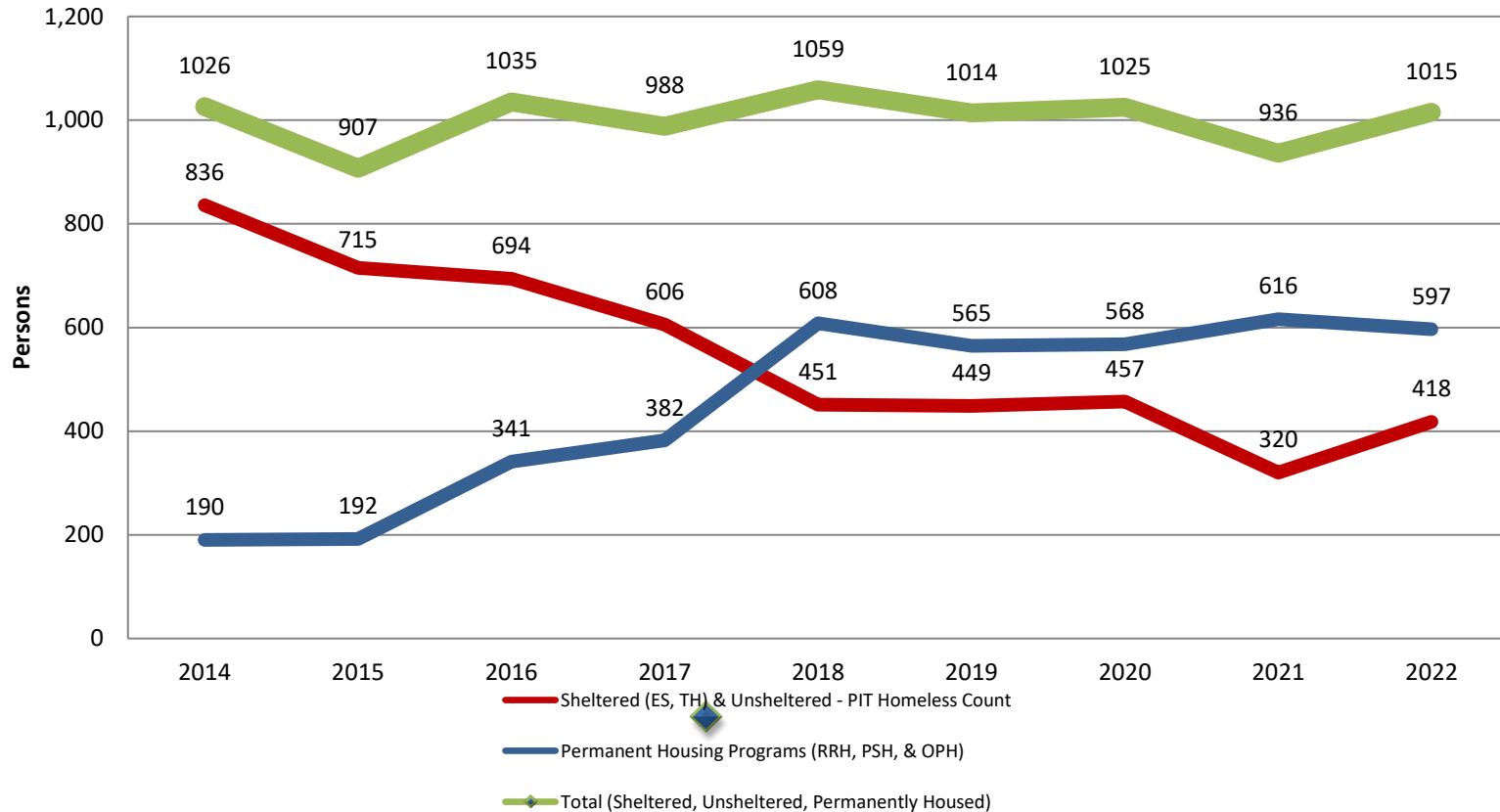


2022 PIT COUNT COMPARISON PRIOR YEARS

- 8.5% decrease in persons experiencing homelessness over 2020.
- 39% decrease in persons experiencing homelessness (unsheltered and sheltered) since 2016 PIT count



Lincoln Unsheltered, Sheltered, and in Housing: 2014 - 2022 (Point in Time Count)



Date of PIT Count: 1/25/2022

Population: Sheltered and Unsheltered Count

Total Households and Persons

	Sheltered			Unsheltered	Total
	Emergency	Transitional	Safe Haven		
Total Number of Households	239	43	0	32	314
Total Number of Persons	306	80	0	32	418
Number of Children (under age 18)	64	37	0	0	101
Number of Persons (18 to 24)	23	19	0	1	43
Number of Persons (over age 24)	219	24	0	31	274

Gender

	Sheltered			Unsheltered	Total
	Emergency	Transitional	Safe Haven		
Female	126	52	0	8	186
Male	179	27	0	24	230
Gender that is not singularly 'Female' or 'Male'	0	0	0	0	0
Questioning	0	0	0	0	0
Transgender	1	1	0	0	2

Ethnicity

	Sheltered			Unsheltered	Total
	Emergency	Transitional	Safe Haven		
Non-Hispanic/Non-Latin(a)(o)(x)	264	64	0	29	357
Hispanic/Latin(a)(o)(x)	42	16	0	3	61

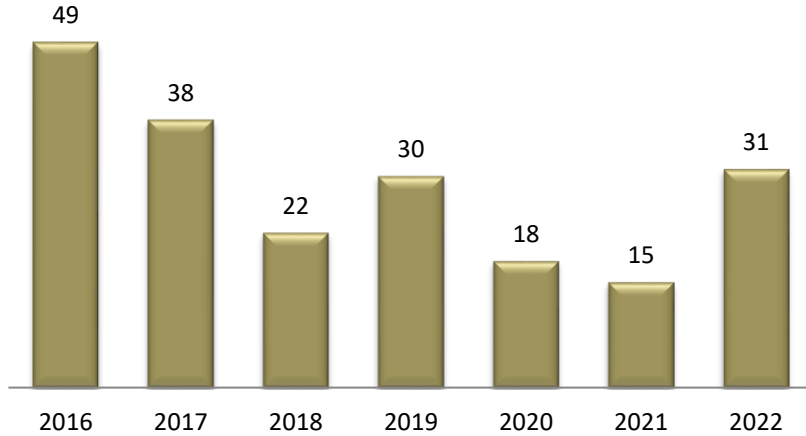
Race

	Sheltered			Unsheltered	Total
	Emergency	Transitional	Safe Haven		
American Indian, Alaska Native, or Indigenous	18	4	0	1	23
Asian or Asian American	13	7	0	0	20
Black, African American, or African	75	28	0	2	105
Native Hawaiian or Pacific Islander	2	3	0	0	5
White	180	36	0	26	242
Multiple Races	18	2	0	3	23

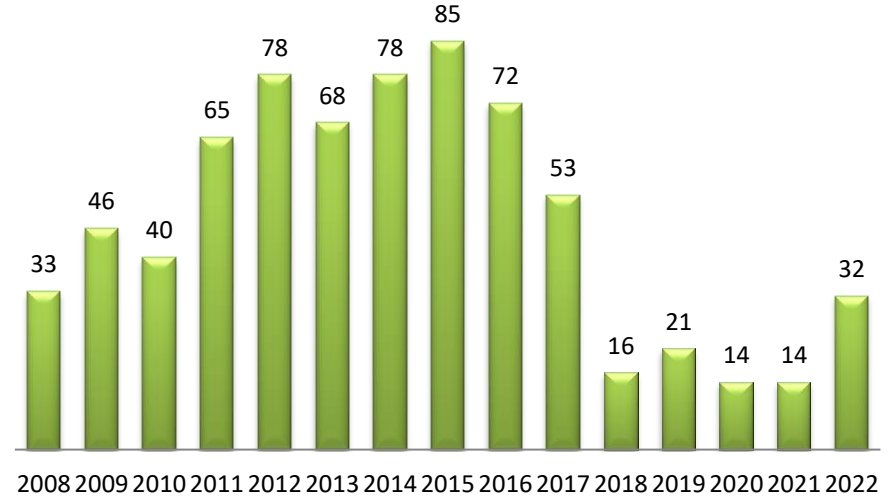
Chronically Homeless

	Sheltered			Unsheltered	Total
	Emergency	Transitional	Safe Haven		
Total number of persons	75		0	19	94

**Transition Aged Youth (18-24)
2016 - 2022 Lincoln Point in Time Count**

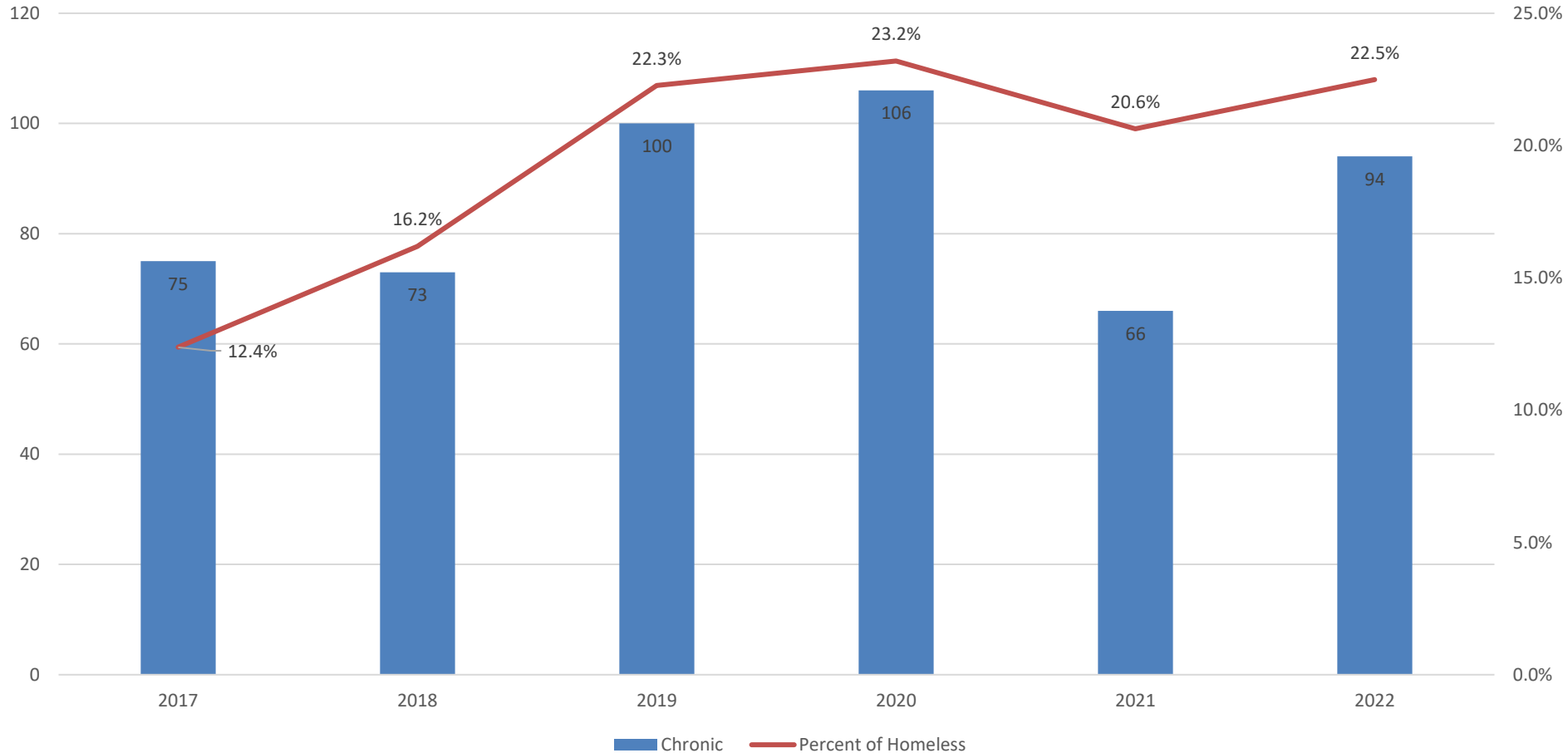


**Homeless U.S. Military Veterans
2008 - 2022 Lincoln Point in Time Count**



Point in Time 2017 -2022

Chronically Homeless and Percent of Total



CHRONICALLY HOMELESSNESS

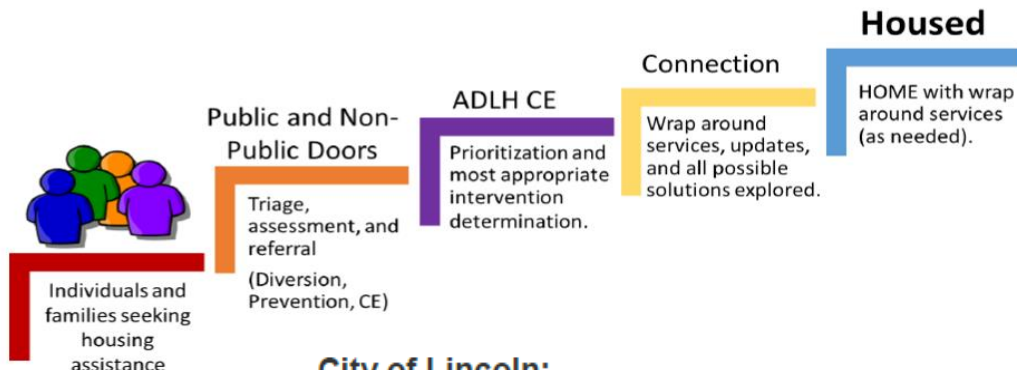
- A person with a disability
- In a place not meant for human habitation or emergency shelter
- Continuously for at least 12 months or on at least four (4) separate occasions in the last three (3) years where the combined total time is at least 12 months.
- Chronically homeless families are families with adult heads of household who meet the definition of a chronically homeless individual





ALL DOORS LEAD HOME

COORDINATED ENTRY SYSTEM FOR NEBRASKA BALANCE OF STATE AND LINCOLN



City of Lincoln:

CenterPointe, Inc. (402)475-5161

Matt Talbot Kitchen & Outreach (402)477-4116

People's City Mission (402)475-1303

Cedars Youth Services (402)437-8850

The HUB Central Access Point for Young Adults
(402)471-8526

FOR MORE INFORMATION:

Contact the Homeless Coordinated
Entry Lead



**CENTER ON CHILDREN,
FAMILIES, AND THE LAW**



<http://go.unl.edu/8myp>

Or

[https://www.facebook.com/
ADLHCE/](https://www.facebook.com/ADLHCE/)



DOWNTOWN OUTREACH

GENERAL OUTREACH ASSISTANCE:

CENTERPOINTE

<i>Outreach Line</i>	402.782.1199
<i>Kate Michael</i>	402.413.6886
<i>Mark Fowler</i>	402.797.1404
<i>Matt Martinosky</i>	402.797.1664

<i>CenterPointe Crisis Response Team</i>	402.475.6695
--	---------------------

MATT TALBOT

<i>Amanda Owen-Doerr</i>	402.875.5782
<i>Glenn Schawang</i>	402.817.0620

YOUTH OUTREACH:

CEDARS

<i>Emerson</i>	402.560.9356
<i>Brittany</i>	402.310.7205

VETERAN OUTREACH:

VA

<i>Sara Meints</i>	402.669.0364
--------------------	---------------------

