




# Railroad Transportation Safety District

*Lincoln Metropolitan Planning Organization*  
**Transportation Improvement Program**

**Railroad Transportation  
Safety District**  
*FY 2023 - 2026*



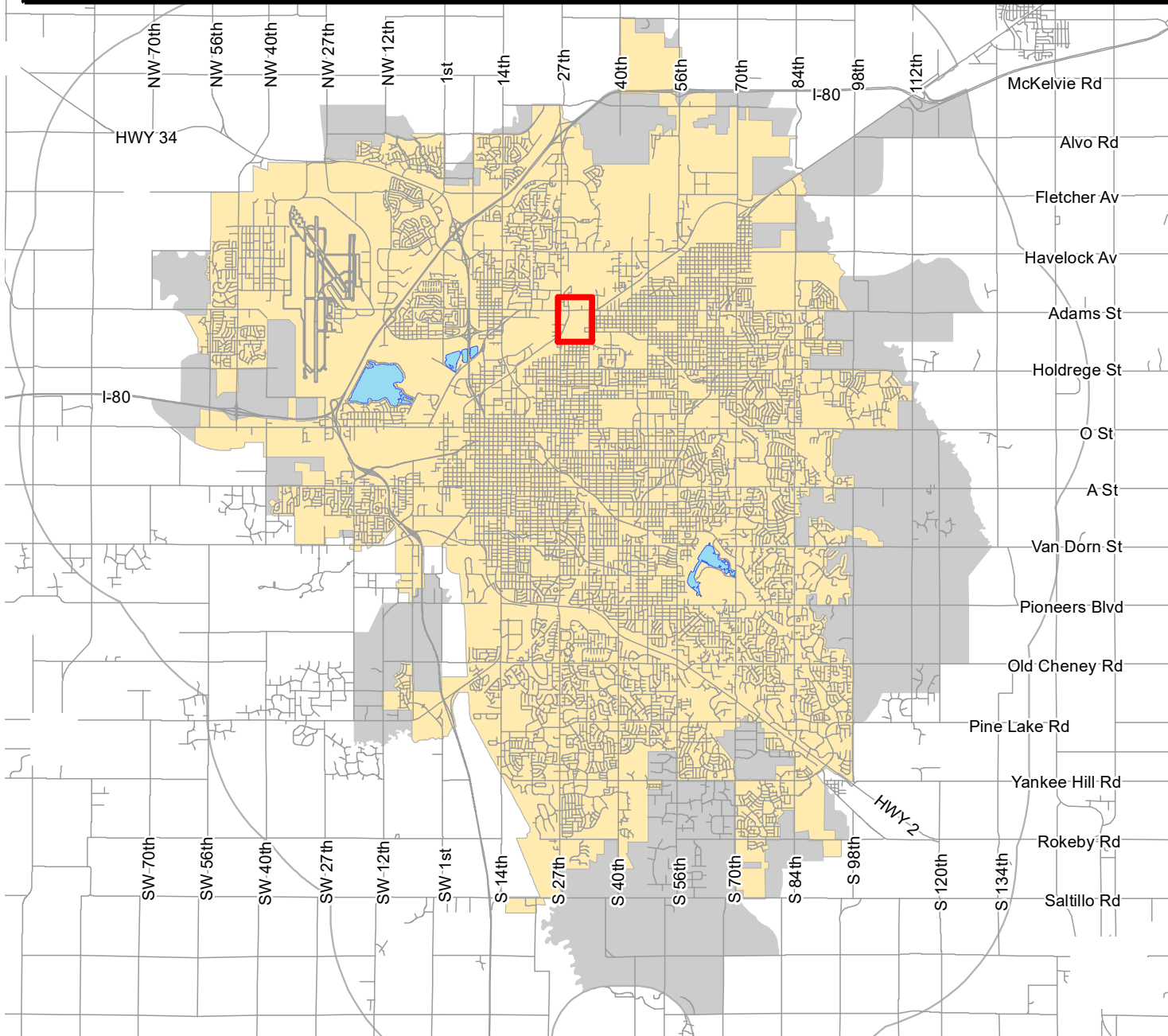
 **Project Location**

**33rd and Cornhusker  
(BNSF Rail Corridor)**



Lincoln's Future Service Limit Shown as Grey

**Consult the detailed project descriptions  
and funding summary for further information.**



2023-2026 LINCOLN CITY/LANCASTER COUNTY, NEBRASKA TRANSPORTATION IMPROVEMENT PROGRAM				AGENCY:		City of Lincoln										
				DIVISION:		Railroad Transportation Safety District										
PROJ NO (Map)	PROJECT (Location & Distance)			PROGRAMMED EXPENDITURES & FUNDING SOURCES (FS) (000's)												
	(Improvement Description)			PRIORITY PROJECTS						COST BEYOND PROGRAM	TOTAL PROJECT COSTS					
	(Control Number)	(Project Number)	(Work Phase)	PRIOR FISCAL YEARS	FS	2022-23	FS	2023-24	FS			2024-25	FS	2025-26	FS	
1	<b>33rd/Cornhusker Viaduct, Lincoln</b> This project would implement study results to remove two at-grade crossings which would improve safety and mobility for existing and future traffic needs in the area. Complete funding for this project is not shown. Construction/CE will consist of RZ, RT, and RR funds. This project is part of Transportation System Optimization.			PE/ROW	5,114.0	RT	405.0	RT	2,505.0	RT	10,005.0	RT	7,305.0	RT		
				PE/ROW	347.0	LOTM	195.0	LOTM	195.0	LOTM	195.0	LOTM	195.0	LOTM	37.0	
				PE/ROW	330.0	LN									89,005.0	
				Const/CE												
			<b>TOTAL</b>		<b>5,791.0</b>		<b>600.0</b>		<b>2,700.0</b>		<b>10,200.0</b>		<b>7,500.0</b>		<b>89,042.0</b>	<b>115,833.0</b>
<b>FUNDING SUMMARY</b>																
<b>FEDERAL FUNDS</b>																
	RZ (Railroad - Hwy Crossing - Hazardous Funds)				0.0		0.0		0.0		0.0		0.0		25,000.0	
			<b>SUB-TOTAL FEDERAL FUNDING</b>		<b>0.0</b>		<b>0.0</b>		<b>0.0</b>		<b>0.0</b>		<b>0.0</b>		<b>25,000.0</b>	<b>25,000.0</b>
<b>STATE FUNDS</b>																
			<b>SUB-TOTAL STATE FUNDING</b>		<b>0.0</b>		<b>0.0</b>		<b>0.0</b>		<b>0.0</b>		<b>0.0</b>		<b>0.0</b>	<b>0.0</b>
<b>LOCAL FUNDS</b>																
	RT (Railroad Transportation Safety District)				5,114.0		405.0		2,505.0		10,005.0		7,305.0		58,005.0	83,339.0
	RR (Railroad Private Contributions)				0.0		0.0		0.0		0.0		0.0		6,000.0	6,000.0
	LN (City of Lincoln Funds)				330.0		0.0		0.0		0.0		0.0		330.0	330.0
	LOTM (Lincoln on the Move Funds) [city funds]				347.0		195.0		195.0		195.0		195.0		37.0	1,164.0
			<b>SUB-TOTAL LOCAL FUNDING</b>		<b>5,791.0</b>		<b>600.0</b>		<b>2,700.0</b>		<b>10,200.0</b>		<b>7,500.0</b>		<b>64,042.0</b>	<b>26,791.0</b>
<b>TOTAL</b>					<b>5,791.0</b>		<b>600.0</b>		<b>2,700.0</b>		<b>10,200.0</b>		<b>7,500.0</b>		<b>89,042.0</b>	<b>115,833.0</b>