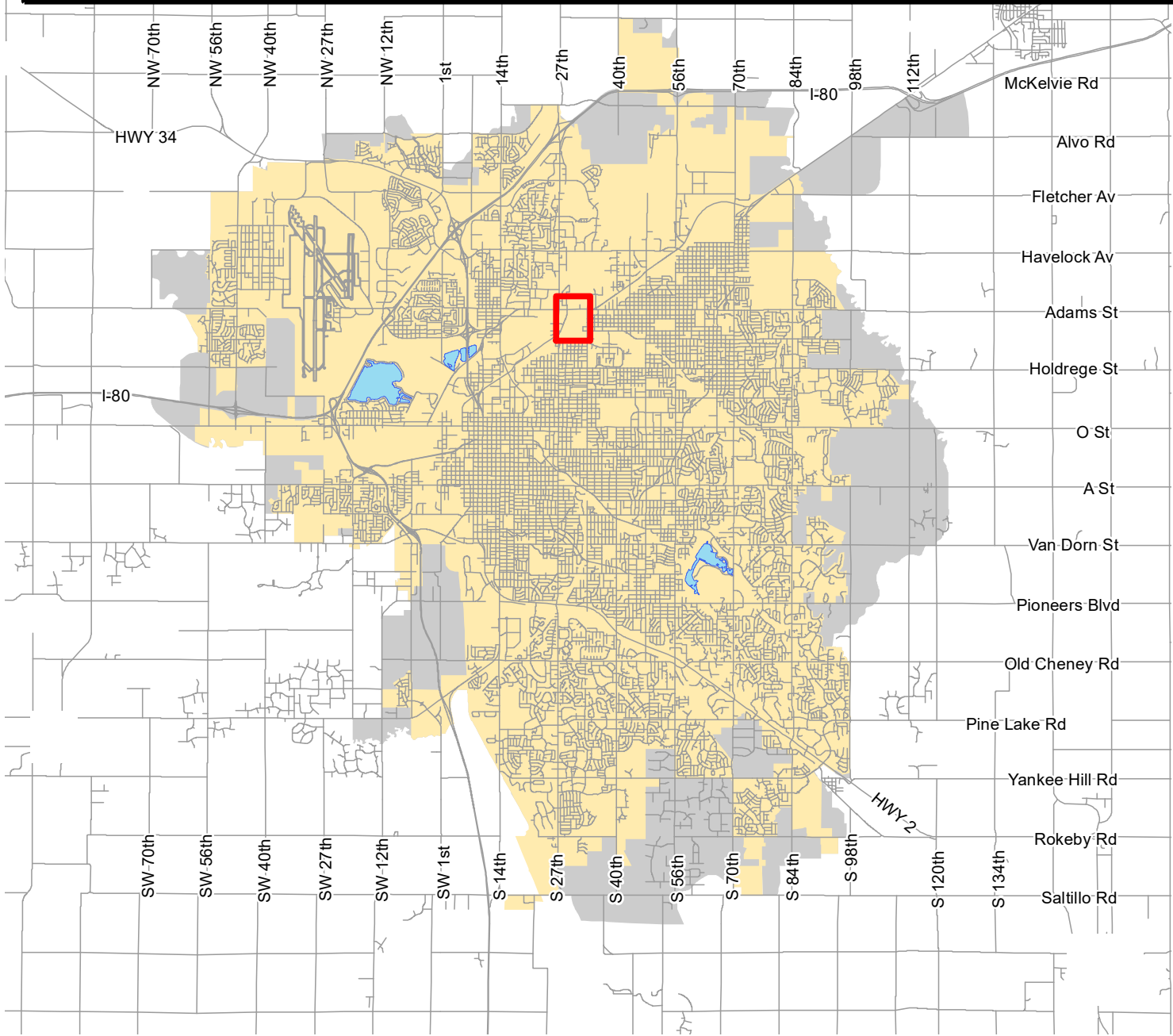




Railroad Transportation Safety District

Lincoln Metropolitan Planning Organization
Transportation Improvement Program

**Railroad Transportation
Safety District**
FY 2022 - 2025



 **Project Location**

**33rd and Cornhusker
(BNSF Rail Corridor)**



Lincoln's Future Service Limit Shown as Grey

**Consult the detailed project descriptions
and funding summary for further information.**

2022-2025 LINCOLN CITY/LANCASTER COUNTY, NEBRASKA TRANSPORTATION IMPROVEMENT PROGRAM				AGENCY:	City of Lincoln											
				DIVISION:	Railroad Transportation Safety District											
PROJ NO	PROJECT			PROGRAMMED EXPENDITURES & FUNDING SOURCES (FS) (000's)												
(Map)	(Location & Distance)															
(Improvement Description)				PRIORITY PROJECTS						COST BEYOND PROGRAM	TOTAL PROJECT COSTS					
	(Control Number)	(Project Number)	(Work Phase)	PRIOR FISCAL YEARS	FS	2021-22	FS	2022-23	FS			2023-24	FS	2024-25	FS	
1	33rd and Cornhusker/BNSF Rail Corridor This project would implement study results to remove three at-grade crossings which would improve safety and mobility for existing and future traffic needs in the area. Complete funding for this project is not shown. Construction/CE will consist of RZ, RT, and RR funds. This project is part of Transystem System Optimization.			PE/ROW	4,709.0	RT	805.0	RT	2,305.0	RT	9,805.0	RT	7,305.0	RT		
				PE/ROW	152.0	LOTM	195.0	LOTM	195.0	LOTM	195.0	LOTM	195.0	LOTM	232.0	
				PE/ROW	330.0	LN									89,200.0	
				Const/CE												
			TOTAL		5,191.0		1,000.0		2,500.0		10,000.0		7,500.0		89,432.0	115,623.0
FUNDING SUMMARY																
FEDERAL FUNDS																
					0.0		0.0		0.0		0.0		0.0		25,000.0	
			SUB-TOTAL FEDERAL FUNDING		0.0		0.0		0.0		0.0		0.0		25,000.0	25,000.0
STATE FUNDS																
			SUB-TOTAL STATE FUNDING		0.0		0.0		0.0		0.0		0.0		0.0	0.0
LOCAL FUNDS																
					4,709.0		805.0		2,305.0		9,805.0		7,305.0		57,968.0	82,897.0
					0.0		0.0		0.0		0.0		0.0		6,000.0	6,000.0
					330.0		0.0		0.0		0.0		0.0		330.0	330.0
					152.0		195.0		195.0		195.0		195.0		232.0	1,164.0
			SUB-TOTAL LOCAL FUNDING		5,191.0		1,000.0		2,500.0		10,000.0		7,500.0		64,200.0	26,191.0
TOTAL					5,191.0		1,000.0		2,500.0		10,000.0		7,500.0		89,432.0	115,623.0