





Pedestrian, Bike & Trails

Lincoln Metropolitan Planning Organization
Transportation Improvement Program

Ped, Bike and Trails
FY 2022 - 2025



-  Trail Projects
-  Existing Parks

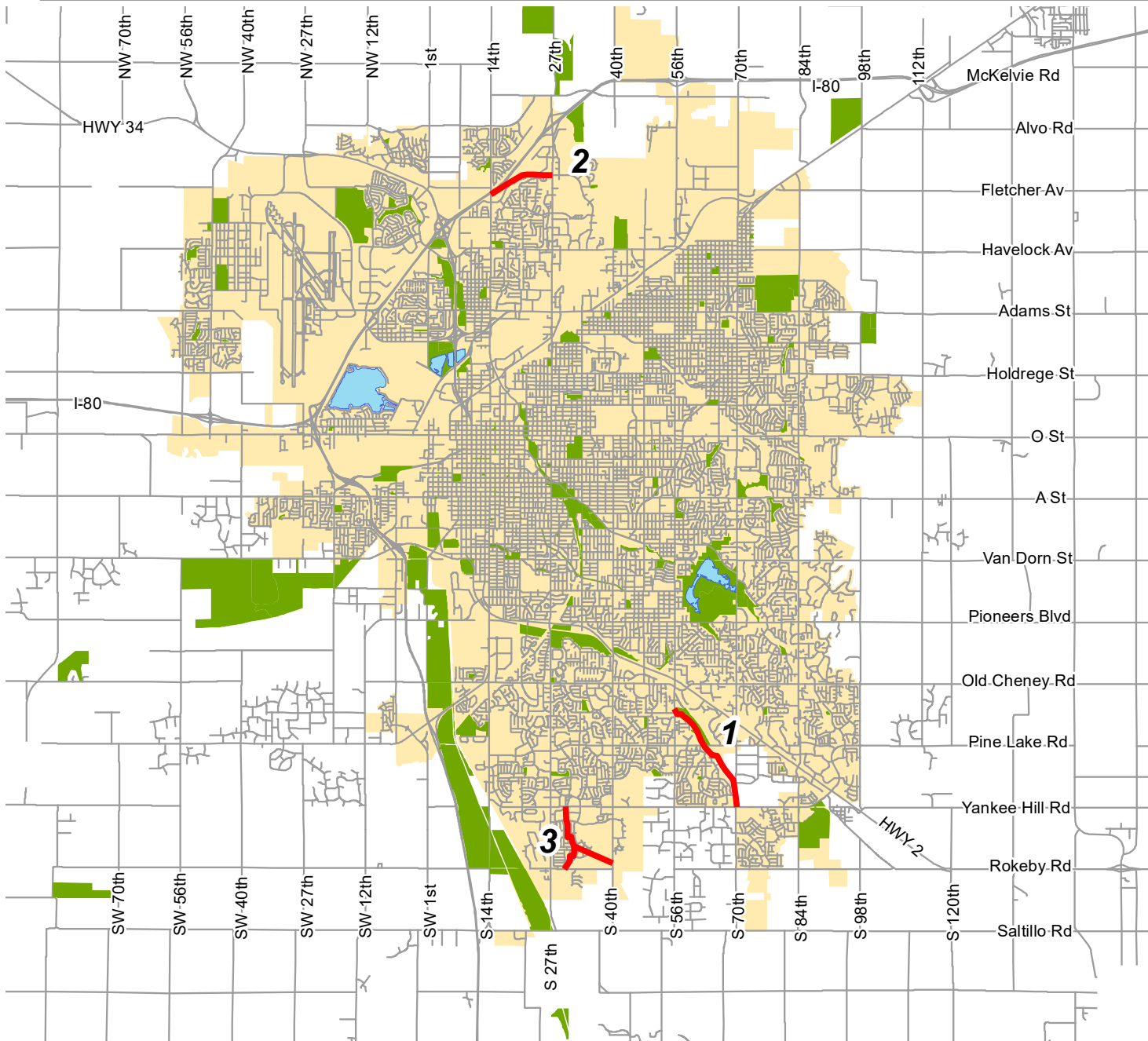
- #1** Beal Slough Trail Project
- #2** Fletcher Landmark Trail
- #3** Wilderness Hills Trail



Lower Platte South
 Natural Resources District



**Consult the detailed project descriptions
 and funding summary for further information.**



2022-2025 LINCOLN CITY/LANCASTER COUNTY, NEBRASKA TRANSPORTATION IMPROVEMENT PROGRAM	AGENCY: Pedestrian, Bike & Trails DIVISION: Planning Area Projects
---	---

PROJ NO (Map)	PROJECT (Location & Distance) (Improvement Description)	PROGRAMMED EXPENDITURES & FUNDING SOURCES (FS) (000's)											
		PRIORITY PROJECTS					COST BEYOND PROGRAM	TOTAL PROJECT COSTS					
		PRIOR FISCAL YEARS	FS	2021-22	FS	2022-23			FS	2023-24	FS	2024-25	FS
(Control Number)	(Project Number)	(Work Phase)											
1	City of Lincoln Parks & Recreation Department Beal Slough Trail Project Trail project to extend southeasterly along the Beal Slough Channel from 56th Street & London Road to 70th Street & Yankee Hill Road. The trail will be on city owned property to Pine Lake Road where it will connect with an underpass at Pine Lake Road (included with the street project). trail will continue southeast parallel to the railroad and the Beal Slough Channel, connecting to 70th Street. Ten foot concrete trail on 20 foot right-of-way. Total 2.22 miles.												
				PE	76.2	TA2							
				PE	19.1	LN							
				ROW			8.0	TA2					
				ROW			2.0	LN					
				Construction					958.3	TA2			
				Construction					239.6	LN			
				CE					143.8	TA2			
				CE					35.9	LN			
				TOTAL	95.3		10.0		1,377.6		0.0	0.0	0.0
	C.N. 13366	TAP-55(182)											
2	Fletcher Landmark Trail Trail project for concrete trail to follow primarily alongside Fletcher Street from N. 14th Street to N. 27th Street.			PE	181.4	TA2							
				PE	45.4	LN							
				ROW			29.7	TA2					
				ROW			7.4	LN					
				Util					21.8	TA2			
				Util					5.4	LN			
				Construction					725.5	TA2			
				Construction					181.4	LN			
				CE					112.1	TA2			
				CE					28.0	LN			
		TOTAL	226.8		37.1		1,074.2		0.0	0.0	0.0	1,338.1	
	C.N. 13442	TAP-55(186)											
3	Wilderness Hills Trail Continuing the Tierra Williamsburg trail from about 37th and Yankee Hill Rd South approximately .75 mile where it will branch off in two segments, one leading east to an underpass of S. 40th Street, the other southwest to an underpass of Rokeby Road.			PE						87.5	OF		
				PE						21.8	LN		
				ROW								27.4	
				Utilities								36.5	
				Construction								767.5	
				CE								109.3	
		TOTAL	0.0		0.0		0.0		0.0	109.3		940.7	1,050.0

2022-2025 LINCOLN CITY/LANCASTER COUNTY, NEBRASKA TRANSPORTATION IMPROVEMENT PROGRAM	AGENCY: Pedestrian, Bike & Trails DIVISION: Planning Area Projects
---	---

PROJ NO (Map)	PROJECT (Location & Distance) (Improvement Description) (Control Number) (Project Number) (Work Phase)	PROGRAMMED EXPENDITURES & FUNDING SOURCES (FS) (000's)									
		PRIORITY PROJECTS					COST BEYOND PROGRAM	TOTAL PROJECT COSTS			
		PRIOR FISCAL YEARS	FS	2021-22	FS	2022-23			FS	2023-24	FS
FUNDING SUMMARY											
FEDERAL FUNDS											
CMAQ (Congestion Mitigation and Air Quality)		0.0		0.0		0.0		0.0		0.0	
RTP (Recreational Trails Program)		0.0		0.0		0.0		0.0		0.0	
TE (STPB - Sub-Allocation, Transportation Enhancement)		0.0		0.0		0.0		0.0		0.0	
TA1 (STP-TA - State Transportation Alternatives Program)		0.0		0.0		0.0		0.0		0.0	
TA2 (STP-TA - Lincoln MPO Transportation Alternatives Program)		257.6		37.7		1,961.5		0.0		0.0	
TAC (Advanced Construction for STP-TA-Transportation Alternatives Program Funding)		0.0		0.0		0.0		0.0		0.0	
SR (SRTS - Safe Routes to School)		0.0		0.0		0.0		0.0		0.0	
SUB-TOTAL FEDERAL FUNDING		257.6		37.7		1,961.5		0.0		0.0	2,256.8
STATE FUNDS											
NE (State Revenue / Aids)		0.0		0.0		0.0		0.0		0.0	
SUB-TOTAL STATE FUNDING		0.0		0.0		0.0		0.0		0.0	0.0
LOCAL FUNDS											
NR (Lower Platte South Natural Resource District Funds)		0.0		0.0		0.0		0.0		0.0	
GP (Great Plains Trail Network Private Contributions)		0.0		0.0		0.0		0.0		0.0	
RT (Railroad Transportation Safety District)		0.0		0.0		0.0		0.0		0.0	
LN (City of Lincoln Funds)		64.5		9.4		490.3		0.0		21.8	
HIC (City of Hickman Funds)		0.0		0.0		0.0		0.0		0.0	
PR (Other Private Contributions)		0.0		0.0		0.0		0.0		0.0	
OF (Other Funds)		0.0		0.0		0.0		0.0		87.5	
SUB-TOTAL LOCAL FUNDING		64.5		9.4		490.3		0.0		109.3	673.5
TOTAL		322.1		47.1		2,451.8		0.0		109.3	3,871.0
STATUS OF PREVIOUS YEARS PROJECTS											
Projects Completed or Under Contract											
City of Lincoln Parks and Recreation Department											
Stonebridge Trail (COMPLETED)											
Design and construction of a 10' wide, concrete bicycle, pedestrian trail, connecting the North 14th Street Trail with the Alvo Road Trail. This trail will begin at North 14th Street and Humphrey Avenue and proceed through the Stonebridge neighborhood											
	PE	72.0	TA2								
	PE	18.0	LN								
	ROW	107.0	TA2								
	ROW	26.7	LN								
	Construction	642.9	TA2								
	Construction	160.1	LN								
	CE	96.4	TA2								
	CE	24.1	LN								

2022-2025 LINCOLN CITY/LANCASTER COUNTY, NEBRASKA TRANSPORTATION IMPROVEMENT PROGRAM	AGENCY: Pedestrian, Bike & Trails DIVISION: Planning Area Projects
---	---

PROJ NO (Map)	PROJECT (Location & Distance) (Improvement Description)	PROGRAMMED EXPENDITURES & FUNDING SOURCES (FS) (000's)												
		PRIORITY PROJECTS					COST BEYOND PROGRAM	TOTAL PROJECT COSTS						
		PRIOR FISCAL YEARS	FS	2021-22	FS	2022-23			FS	2023-24	FS	2024-25	FS	
(Control Number)	(Project Number)	(Work Phase)												
	Wilderness Park Bridge (COMPLETED) Replace Salt Creek Bridge 1/2 mile north of Saltillo Road.			PE	20.0	LN								
				PE	10.0	GP								
				PE	12.4	OF								
				Const/CE	359.6	LN								
				Const/CE	7.5	GP								
				Const/CE	20.1	OF								
	Lower Platte South Natural Resources District													
	Rosa Parks Way Trail (UNDER CONTRACT) Railroad Undercrossing trail west of 1st and J Street, 900 feet long and 10 wide concrete surface.			PE	41.6	TA1								
				PE	10.4	NR								
				ROW	17.6	TA1								
				ROW	4.4	NR								
				Construction	993.3	TA1								
				Construction	193.3	NR								
				Construction	50.0	RT								
				Construction	5.0	GP								
				CE	248.3	TA1								
				CE	62.1	NR								
		C.N. 12945	ENH-55(164)											